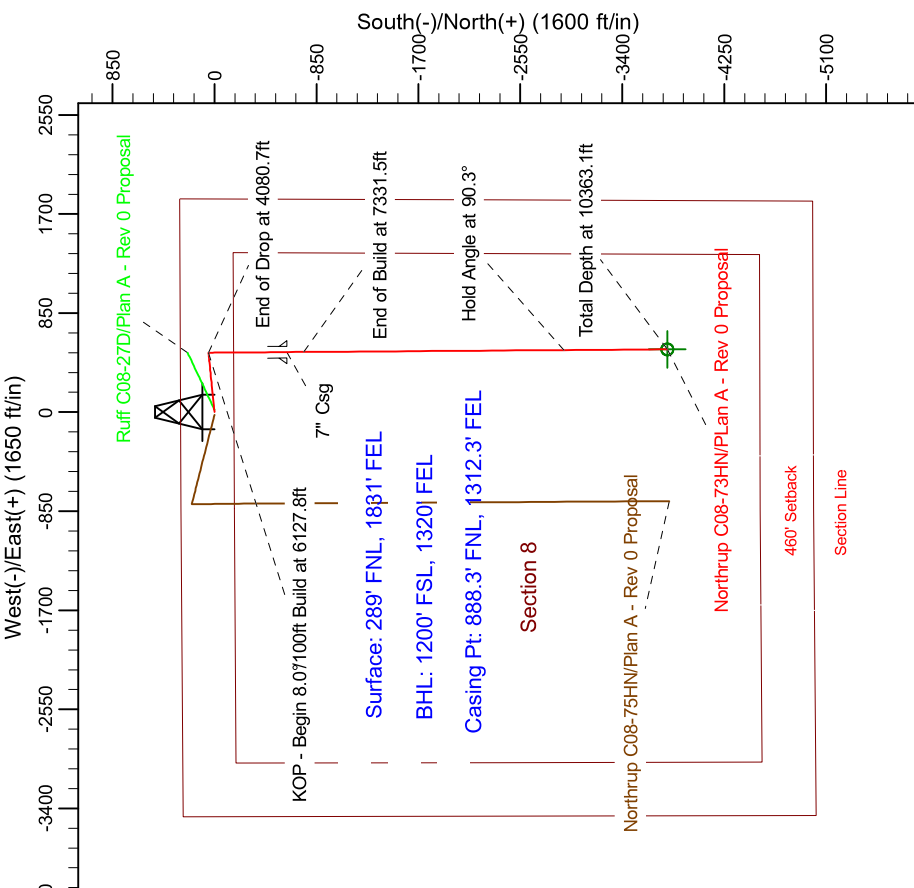
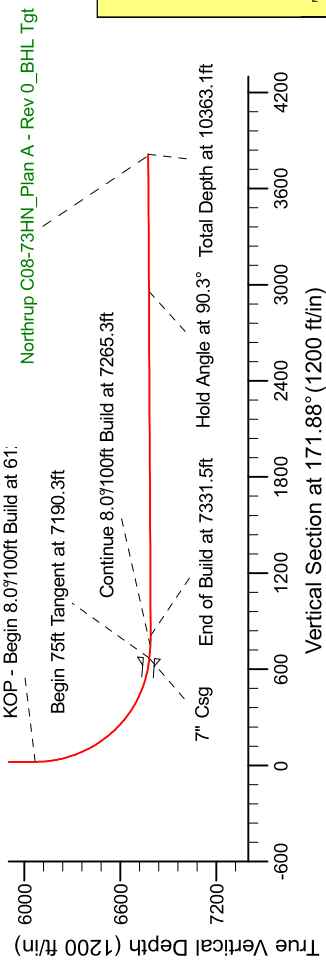
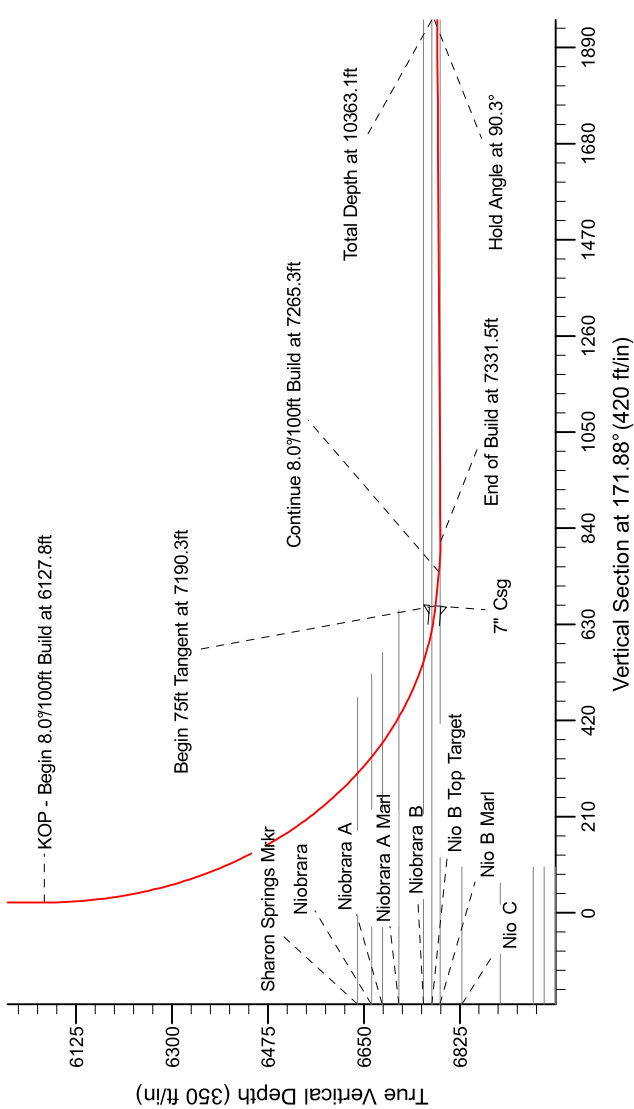


Project: Weld County Colorado (NAD 83)  
Site: Sec. 8, T4N, R64W  
Well: Northrup C08-73HN  
Wellbore: Plan A - Rev 0 (PERMITTING PLAN ONLY)  
Design: Plan A - Rev 0 Proposal

Noble Energy

SECTION DETAILS

Sec	MD	Inc	Azi	TVD	+N/-S	+E/-W	Dleg	TFace	VSect	Target
1	0.0	0.00	0.00	0.0	0.0	0.0	0.00	0.00	0.0	
2	1500.0	0.00	0.00	1500.0	0.0	0.0	0.00	0.00	0.0	
3	2099.8	15.00	84.41	2093.0	7.6	77.7	2.50	84.41	3.4	
4	3480.8	15.00	84.41	3427.0	42.4	433.3	0.00	0.00	19.2	
5	4080.7	0.00	0.00	4020.0	50.0	511.0	2.50	180.00	22.7	
6	6127.8	0.00	0.00	6067.1	50.0	511.0	0.00	0.00	22.7	
7	7190.3	85.00	179.58	6780.6	-603.8	515.8	8.00	179.58	670.6	
8	7265.3	85.00	179.58	6787.1	-678.5	516.3	0.00	0.00	744.6	
9	7331.6	90.30	179.58	6789.8	-744.6	516.8	8.00	0.00	810.2	
10	10363.1	90.30	179.59	6774.0	-3776.1	538.7	0.00	99.62	3814.3	Northrup C08-73HN_Plan A - Rev 0_BHL Tgt



WELL DETAILS: Northrup C08-73HN(NAD83 Geodetic System)			
Northrup	Ground Level:	4765.0	Longitude
416245.32	Easting	993293.27	Latitude
		40° 20' 0.024 N	104° 34' 17.616 W
Plan: Plan A - Rev 0 Proposal (Northrup C08-73HN/Plan A - Rev 0 (PERMITTING PLAN ONLY))			
Created By: Erasmo Mendoza		Date: 16:18, July 07 2011	

Magnetic Model: IGRF200510  
Date: 7/7/2011  
Inclination: 8.10°  
Dip Angle: 07.04°  
Field Strength: 53133.2

**T G M**

Grid North is 0.00° East of True North (Grid Convergency)  
Magnetic North is 8.10° East of True North (Magnetic Declination)  
To convert from Grid North to a Grid Direction, add 8.10° East  
To convert from Magnetic North to a Grid Direction, add 8.10° East  
To convert from Magnetic North to a Grid Direction, add 8.10° East