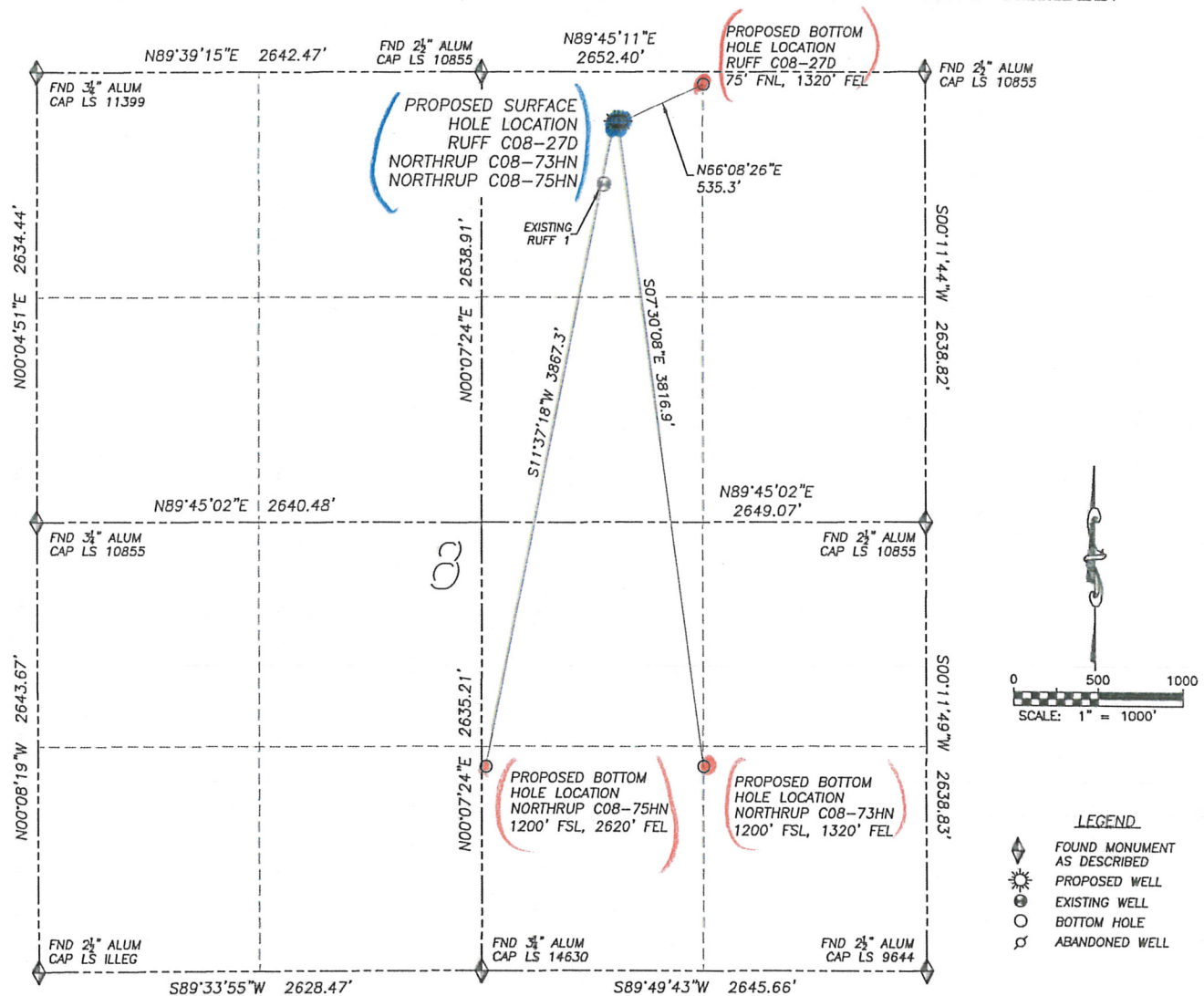


303 953 9841

SECTION 8, TOWNSHIP 4 NORTH, RANGE 64 WEST OF THE 6TH PRINCIPAL MERIDIAN



NAD 83 LATITUDE AND LONGITUDE

NORTHROP C08-75HN SURFACE HOLE:

LATITUDE: N40.33334'

LONGITUDE: W104.57164'

ELEVATION: 4764'

FOOTAGE: 289' FNL, 1854' FEL

PDOP:

QTR/QTR: NW4/NE4

PROP LINE: 205'± EAST

BOTTOM HALF:

LATITUDE: N40.32295°

LONGITUDE: W104.57444'

FOOTAGE: 1200' FSL, 2620' FEL

NEAREST EXISTING WELL:

RUFF 1 SURFACE HOLE

LATITUDE: N40.33233'

LONGITUDE: W104.5

ELEVATION: 470

375' SOUTHWEST