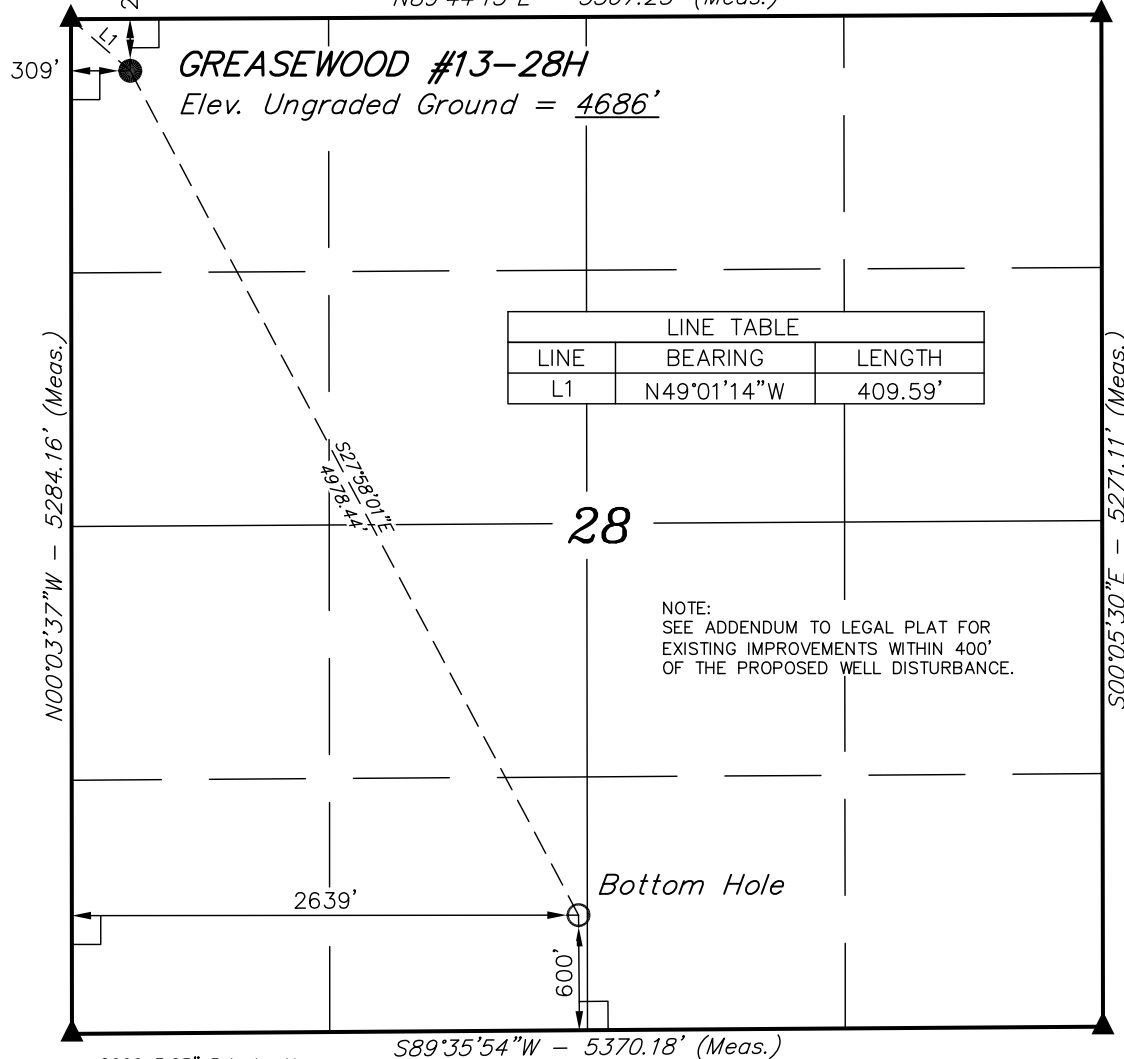


T6N, R61W, 6th P.M.

2011 2.5" UELS Alum.
Cap, 0.2' Below Road
Lat: 40.466461°
Long: 104.223686°

N89°44'15"E - 5367.23' (Meas.)

2011 2.5" UELS Alum.
Cap, 0.3' Below Road
Lat: 40.466522°
Long: 104.204403°



2006 3.25" Private Alum.
Cap, 1.5' Below Ground
Lat: 40.451961°
Long: 104.223675°

S89°35'54"W - 5370.18' (Meas.)

LINE TABLE		
LINE	BEARING	LENGTH
L1	N49°01'14"W	409.59'

NOTE:
SEE ADDENDUM TO LEGAL PLAT FOR
EXISTING IMPROVEMENTS WITHIN 400'
OF THE PROPOSED WELL DISTURBANCE.

2011 2.5" UELS Alum.
Cap, 1.5' Below Ground
Lat: 40.452056°
Long: 104.204383°

EOG RESOURCES, INC.

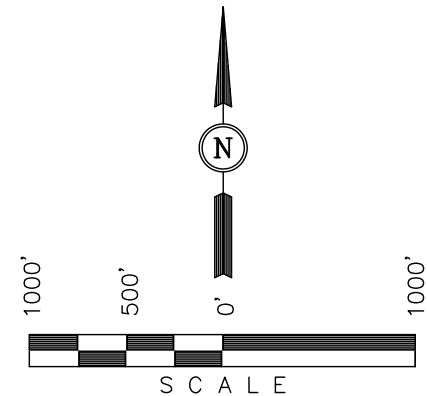
Well location, GREASEWOOD #13-28H, located as shown in the NW 1/4 NW 1/4 of Section 28, T6N, R61W, 6th P.M., Weld County, Colorado.

BASIS OF ELEVATION

SPOT ELEVATION LOCATED AT THE NORTHEAST CORNER OF SECTION 24, T5N, R62W, 6th. P.M. TAKEN FROM THE POINT OF ROCKS, QUADRANGLE, COLORADO, WELD COUNTY, 7.5 MINUTE QUAD (TOPOGRAPHIC MAP) PUBLISHED BY THE UNITED STATES DEPARTMENT OF THE INTERIOR, GEOLOGICAL SURVEY. SAID ELEVATION IS MARKED AS BEING 4530 FEET.

BASIS OF BEARINGS

BASIS OF BEARINGS IS A G.P.S. OBSERVATION.



CERTIFICATE

THIS IS TO CERTIFY THAT THE ABOVE PLAT WAS PREPARED FROM FIELD NOTES OF ACTUAL SURVEYS MADE BY ME OR UNDER MY SUPERVISION AND THAT THE SAME ARE TRUE AND CORRECT TO THE BEST OF MY KNOWLEDGE AND BELIEF.

REGISTERED LAND SURVEYOR
REGISTRATION NO. 17499
STATE OF COLORADO
09-12-11

PDOP = 1.5

NAD 83 (TARGET BOTTOM HOLE)	NAD 83 (SURFACE LOCATION)
LATITUDE = 40°27'13.15" (40.453653)	LATITUDE = 40°27'56.61" (40.465725)
LONGITUDE = 104°12'51.11" (104.214197)	LONGITUDE = 104°13'21.28" (104.222578)
NAD 27 (TARGET BOTTOM HOLE)	NAD 27 (SURFACE LOCATION)
LATITUDE = 40°27'13.21" (40.453669)	LATITUDE = 40°27'56.67" (40.465742)
LONGITUDE = 104°12'49.29" (104.213692)	LONGITUDE = 104°13'19.46" (104.222072)
STATE PLANE NAD 83	STATE PLANE NAD 83
N: 1410700.28 E: 3357813.44	N: 1415064.05 E: 3355418.10
STATE PLANE NAD 27	STATE PLANE NAD 27
N: 410701.17 E: 2357963.56	N: 415064.83 E: 2355568.12

UINTAH ENGINEERING & LAND SURVEYING
85 SOUTH 200 EAST - VERNAL, UTAH 84078
(435) 789-1017

SCALE 1" = 1000'	DATE SURVEYED: 05-31-11	DATE DRAWN: 06-17-11
PARTY Z.B, A.G. S.R.L.	REFERENCES G.L.O. PLAT	
WEATHER WARM	FILE EOG RESOURCES, INC.	

LEGEND:

- └─┘ = 90° SYMBOL
- = PROPOSED WELL HEAD.
- ▲ = SECTION CORNERS LOCATED.