



Copyright © 2003 by Epoch Well Services, Inc.

Houston, TX  
(281) 784-5500  
Bakersfield, CA  
(661) 328-1595  
New Iberia, LA  
(337) 364-2322  
Anchorage, AK  
(907) 561-2465

## Drilling Dynamics

COMPANY	EXXONMOBIL
WELL	PCU 296-6A1
FIELD	PICEANCE CREEK
REGION	ROCKIES
COORDINATES	39.900065 108.212247
ELEVATION	7363.5'
COUNTY, STATE	RIO BLANCO, CO
API INDEX	05-103-11475-00
SPUD DATE	10/22/2010
CONTRACTOR	HELMERICH _PAYNE
CO. REP.	KEVIN GARDNER
RIG/TYPE	FLEX 4
LOGGING UNIT	033
GEOLOGISTS	KEVIN MCMULLEN JASON REISENBICHLER
ADD. PERSONS	DONALD EVANS JASON YEAGER
CO. GEOLOGIST	MELISSA SAURBORN

### LOG INTERVAL

DEPTHS: 145' TO 13822'  
DATES: 10/22/2010 TO 11/15/2010  
SCALE: 1" : 100'

### CASING DATA

16" AT 140'  
10.75" AT 4440'  
7" AT 9667'

AT

### HOLE SIZE

14.75" TO 4444'  
9.875" TO 9667'  
6.125" TO 13822'  
TO

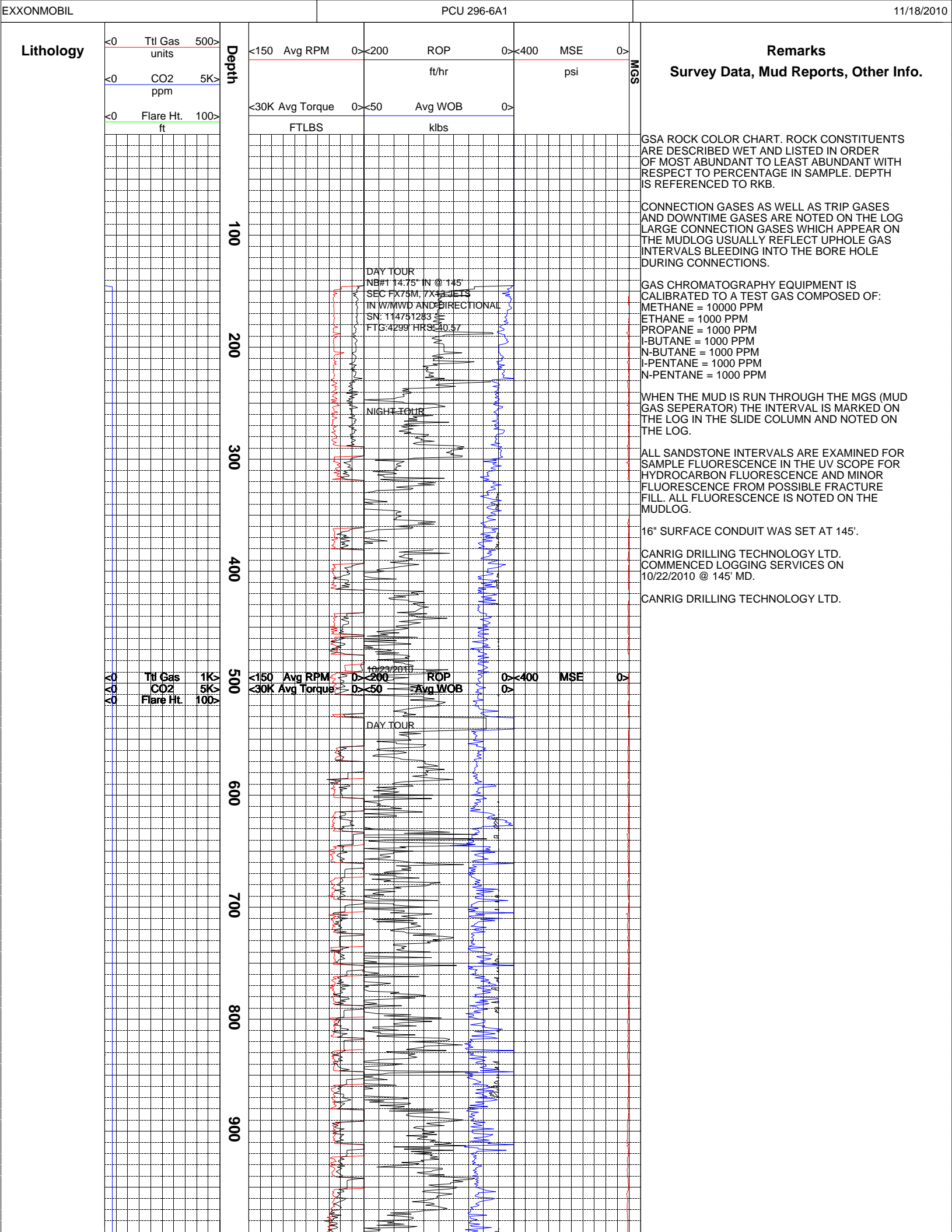
### MUD TYPES

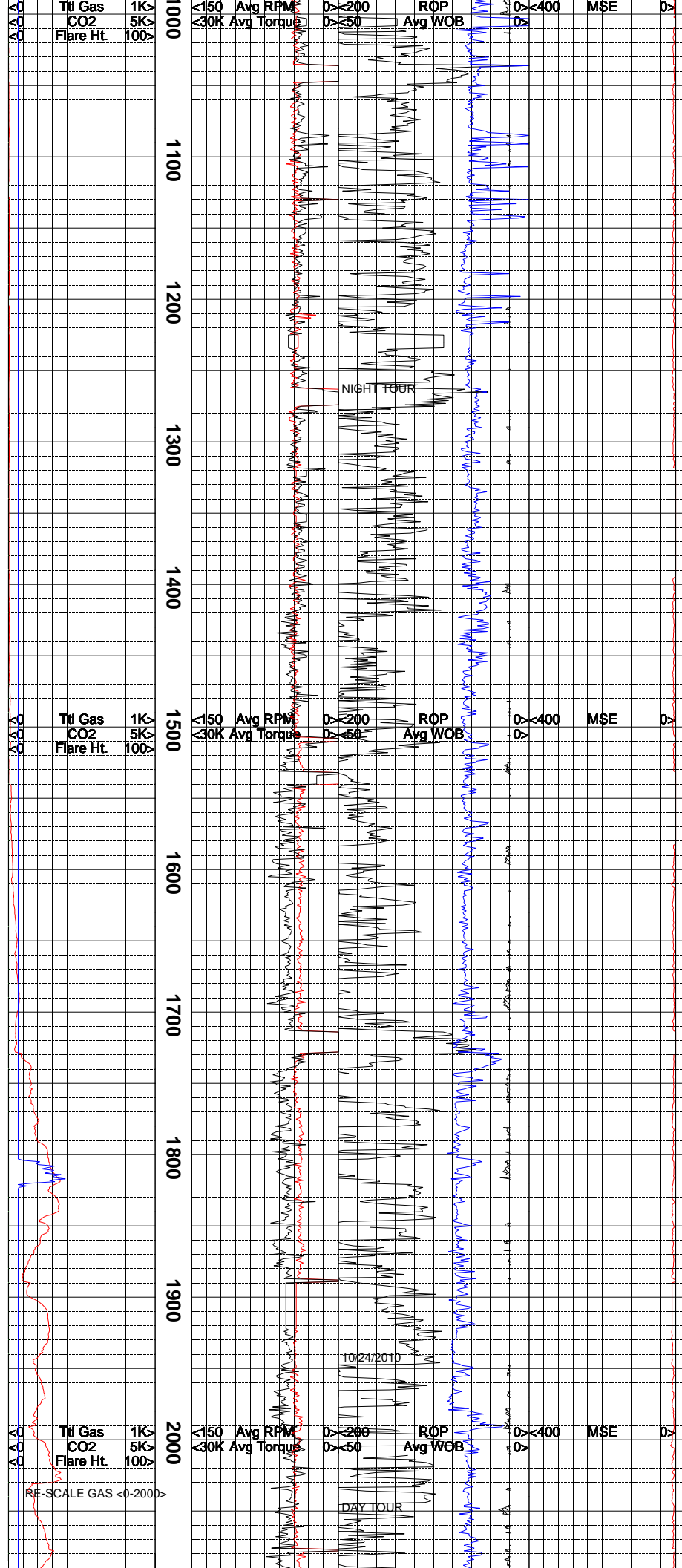
SPUD MUD TO 4444'  
LSND TO 13822'  
TO  
TO

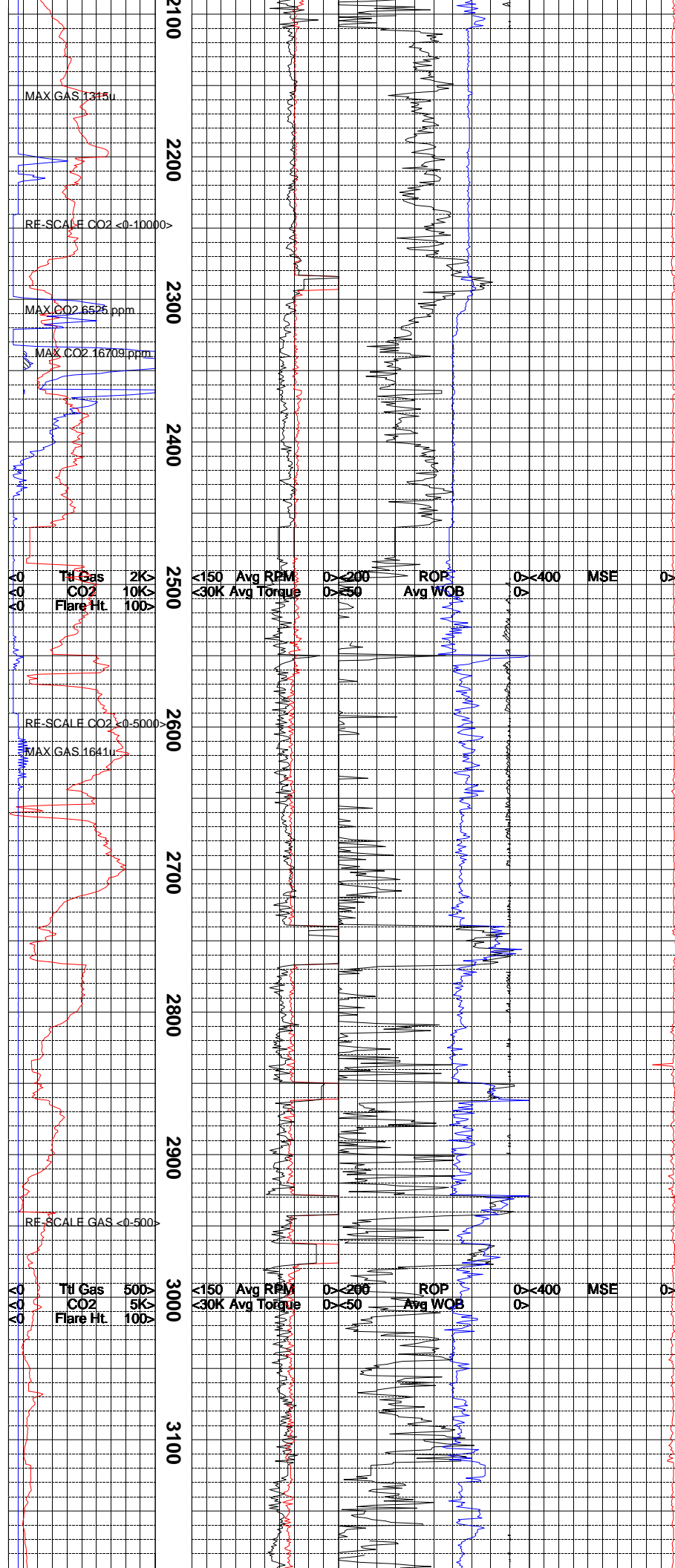
### ABBREVIATIONS

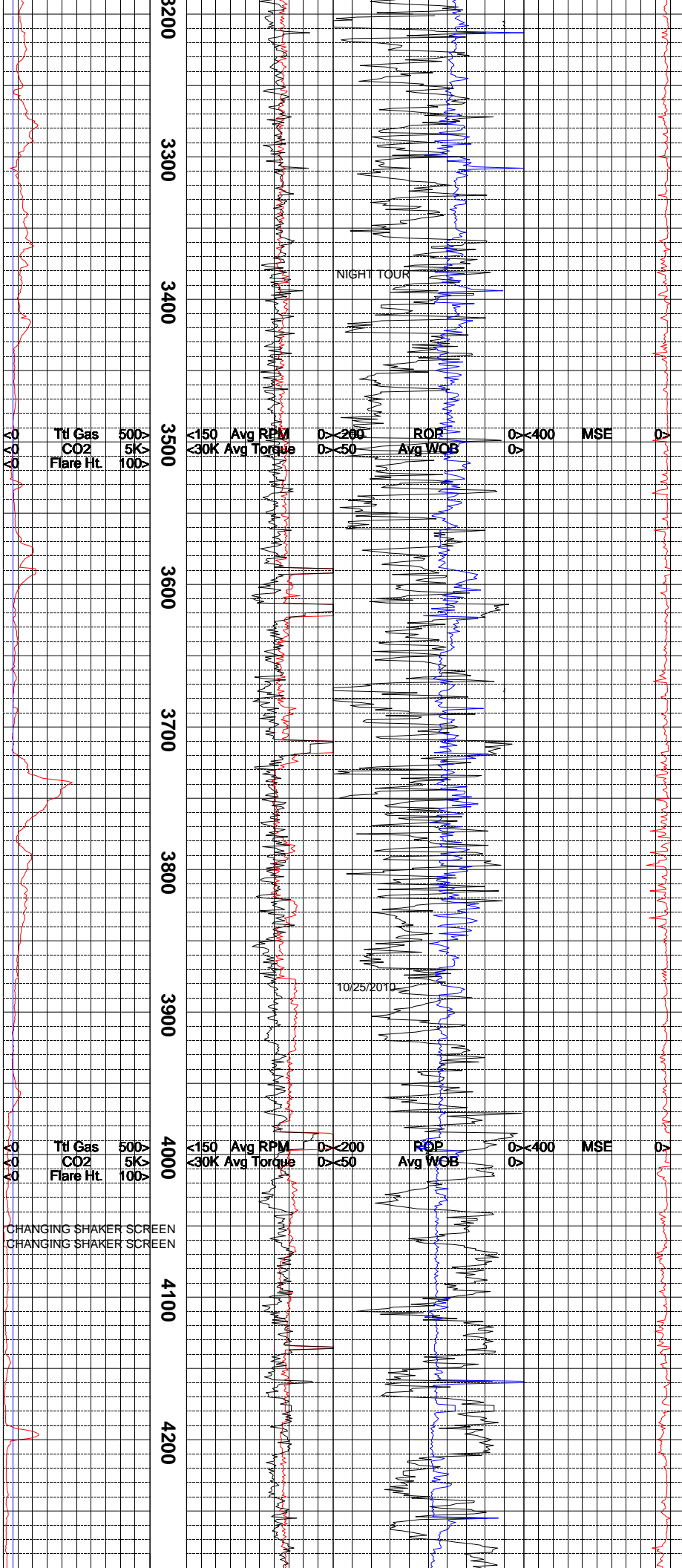
NB	NEWBIT	PV	PLASTIC VISCOSITY	LC	LOST CIRCULATION
RRB	RERUN BIT	YP	YIELD POINT	CO	CIRCULATE OUT
CB	CORE BIT	FL	FLUID LOSS	NR	NO RETURNS
WOB	WEIGHT ON BIT	CL	PPM CLORIDE ION	TG	TRIP GAS
RPM	ROTARY REV/MIN	Rm	MUD RESISTIVITY	SG	SURVEY GAS
PP	PUMP PRESSURE	Rmf	FILTRATE RESISTIVITY	WG	WIPER GAS
SPM	STROKES/MIN	PR	POOR RETURNS	CG	CONNECTION GAS
MW	MUD WEIGHT	LAT	LOGGED AFTER TRIP		
VIS	FUNNEL VISCOSITY	LAS	LOGGED AFTER SURVEY		

	ALTERED ZONE		CHERT - GLASSY		FELSIC SILIC DIKE		MARL - CALC		SANDSTONE
	ANDESITE		CHERT - PORCEL		FOSSIL		METAMORPHICS		SANDSTONE-TUFFACEOUS
	ANHYDRITE		CHERT - TIGER STRIPE		GABBRO		MUDSTONE		SERICITIZATION
	BASALT		CHERT - UNDIFF		GLASSY TUFF		OBSIDIAN		SERPENTINE
	BENTONITE		CLAY		GRANITE		PALEOSOL		SHALE
	BIOTITIZATION		CLAY-MUDSTONE		GRANITE WASH		PHOSPHATE		SHALE TUFFACEOUS
	BRECCIA		CLYST-TUFFACEOUS		GRANODIORITE		PORCELANITE		SHELL FRAGMENTS
	CALCARENITE		CHLORITIZATION		GYPSUM		PORCELANEOUS CLYST		SIDERITE
	CALCAREOUS TUFF		COAL		HALITE		PYRITE		SILICIFICATION
	CALCILUTITE		CONGLOMERATE		HORNBL-QTZ-DIO		PYROCLASTICS		SILTSTONE
	CARBONATES		CONGL. SAND		IGNEOUS (ACIDIC)		QUARTZ DIORITE		SILTST-TUFFACEOUS
	CARBONACEOUS MAT		CONGL. SANDSTONE		IGNEOUS (BASIC)		QUARTZ LATITE		TUFF
	CARBONACEOUS SH		COQUINA		INTRUSIVES		QUARTZ MONZONITE		VOLCANICLASTICS SEDS
	CEMENT CONTAM.		DACITE		KAOLINITIC		RECRYSTALLIZED CALCITE		VOLCANICS
	CHALK		DIATOMITE		LIMESTONE		RHYOLITE		
	CRYSTALLINE TUFF		DIORITE		LITHIC TUFF		SALT		
	CHERT - ARGILL		DOLOSTONE		MARL - DOLO		SAND		



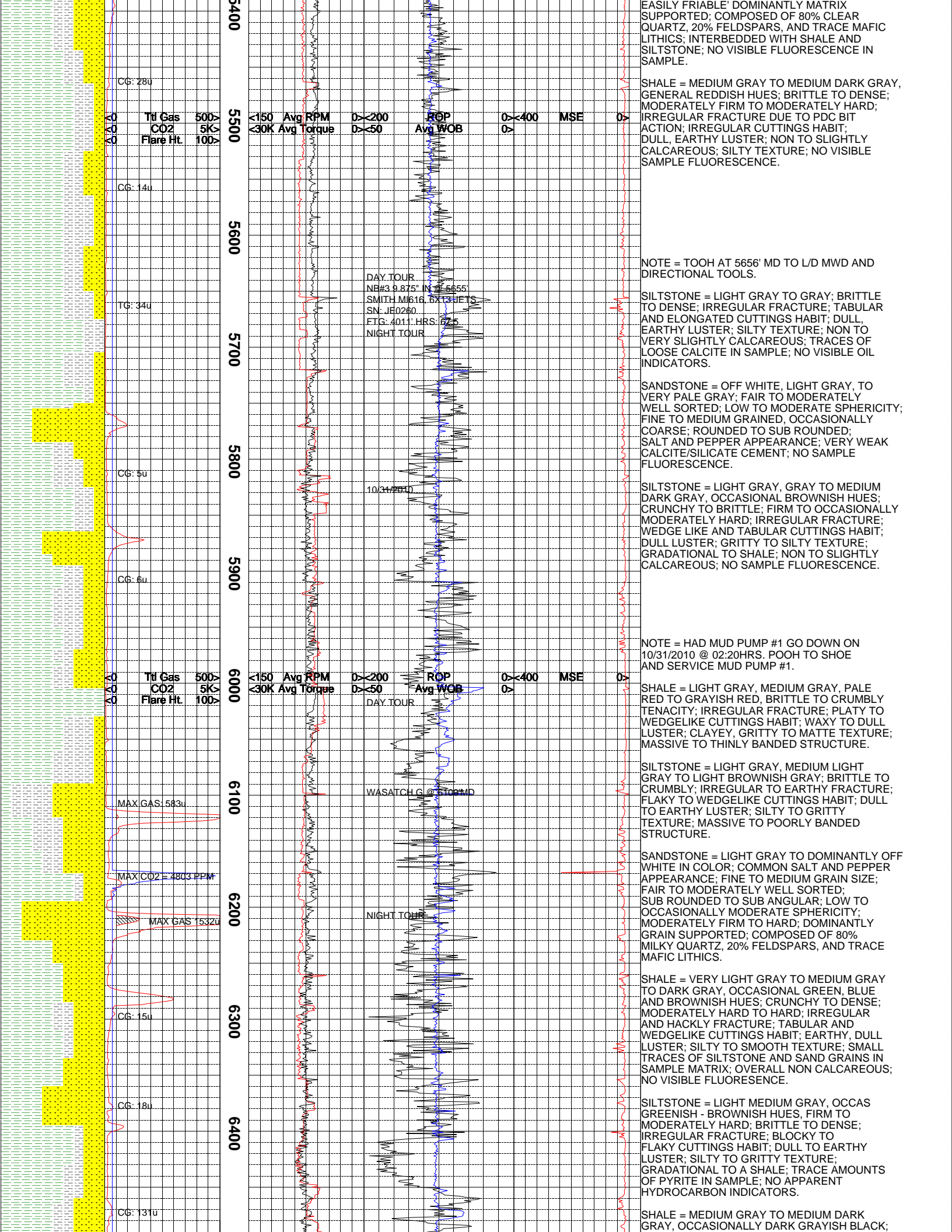


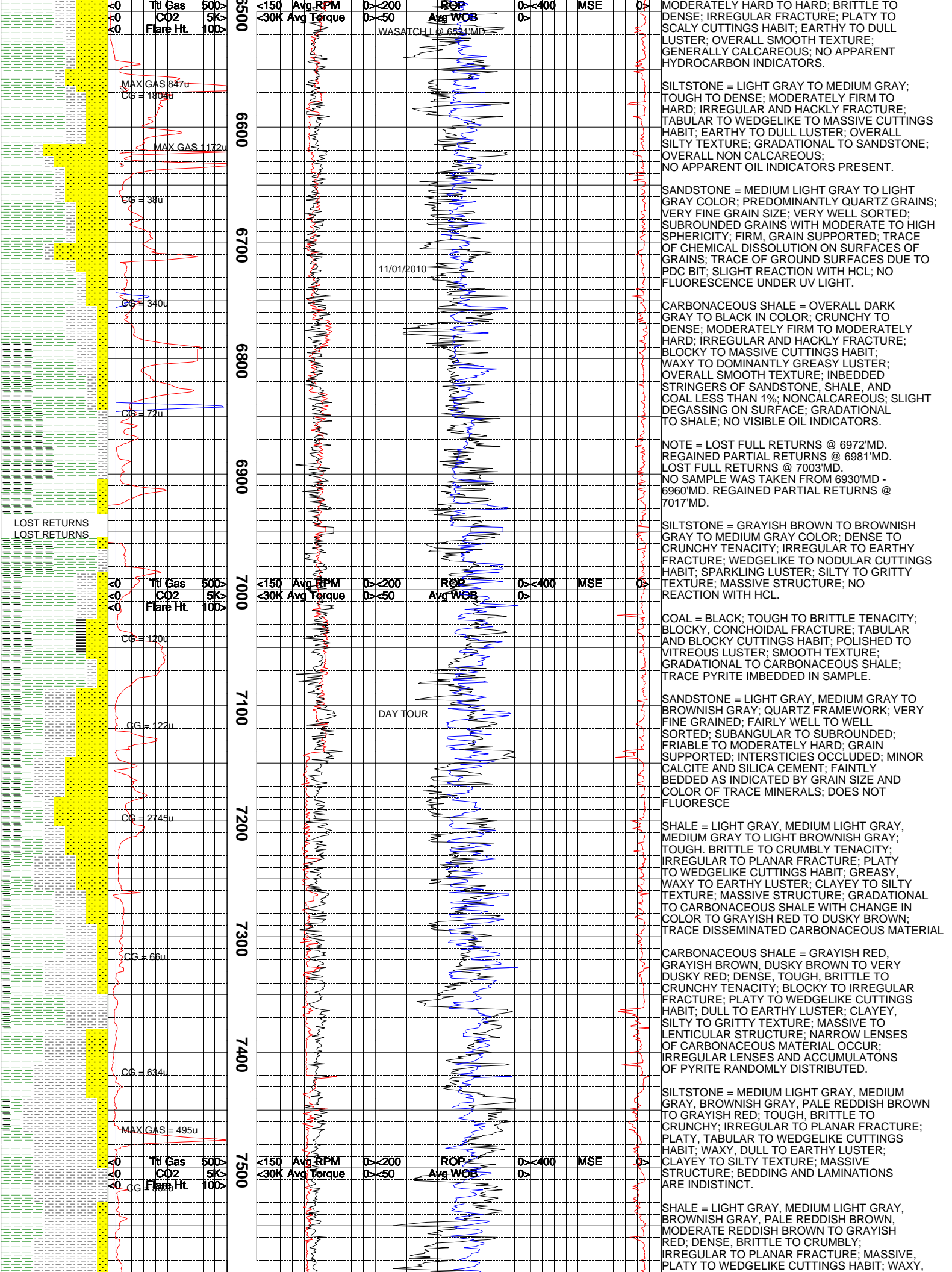




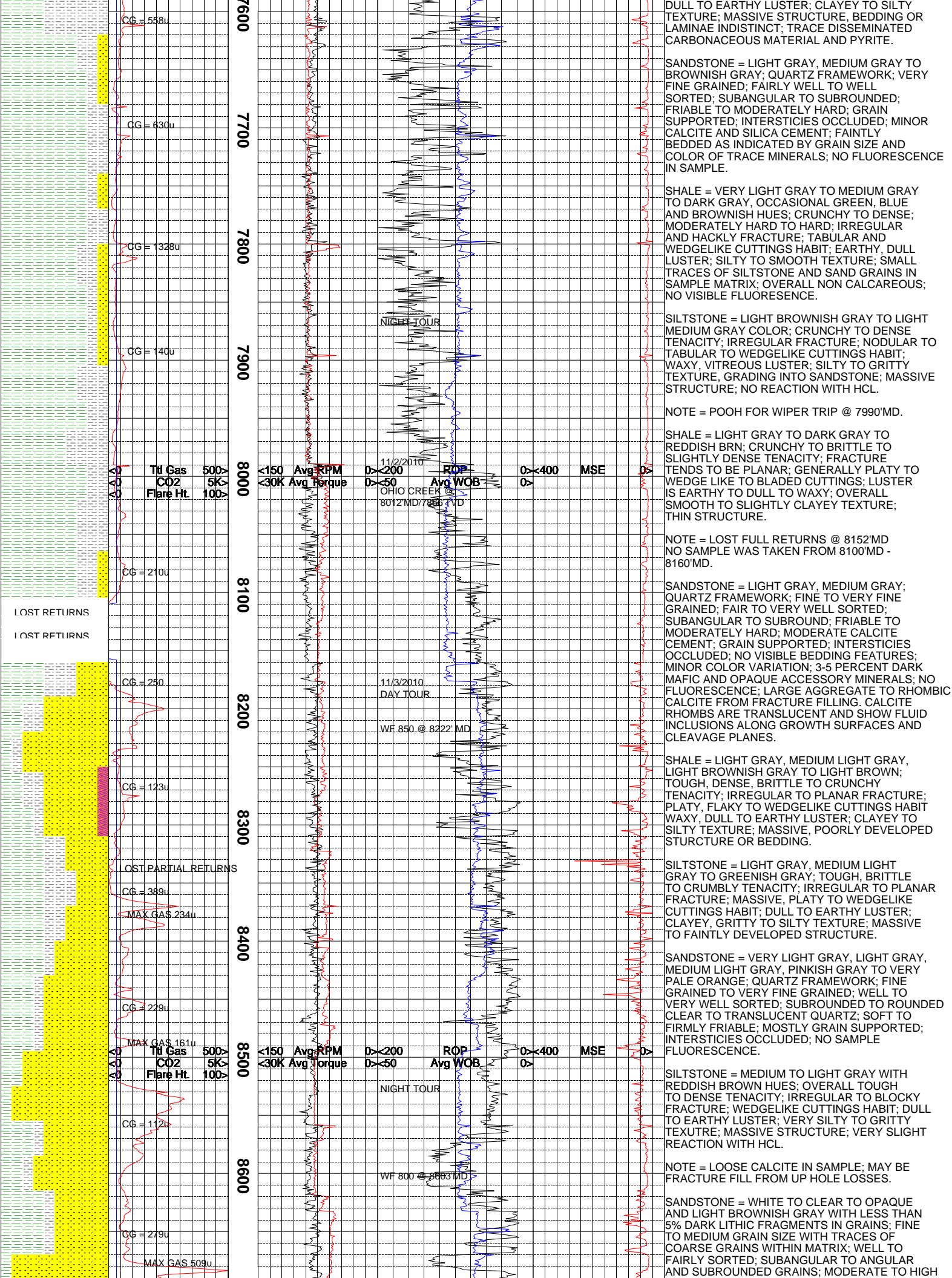


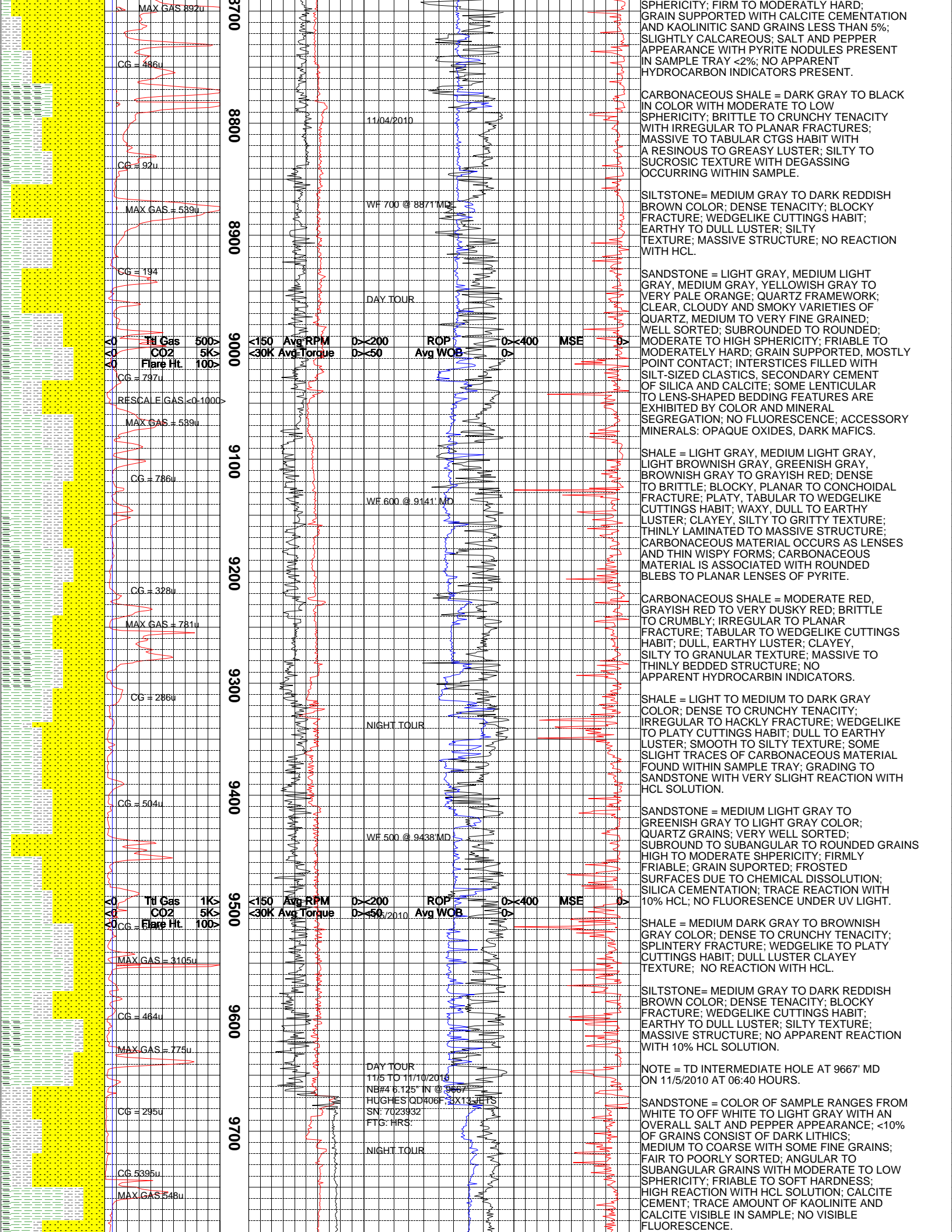


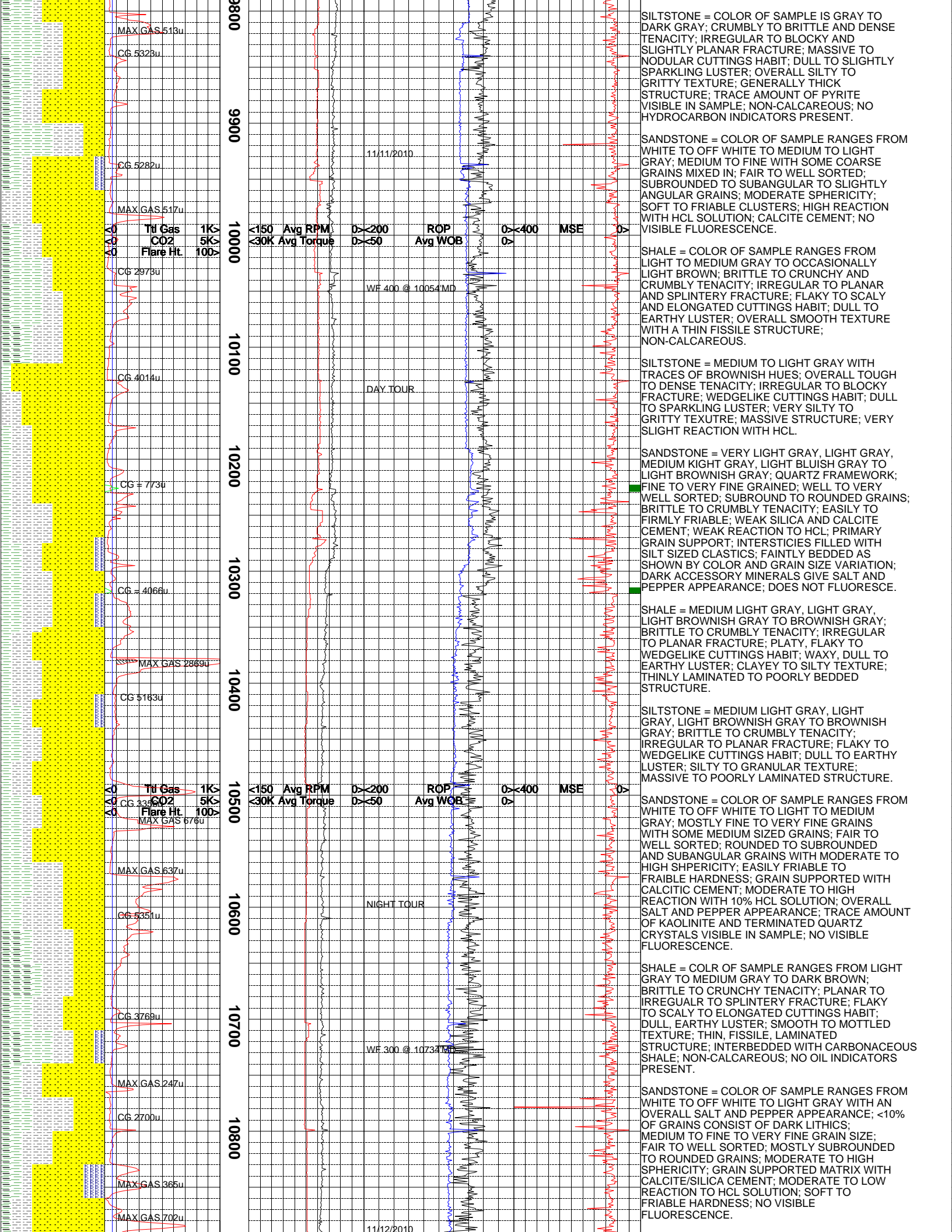




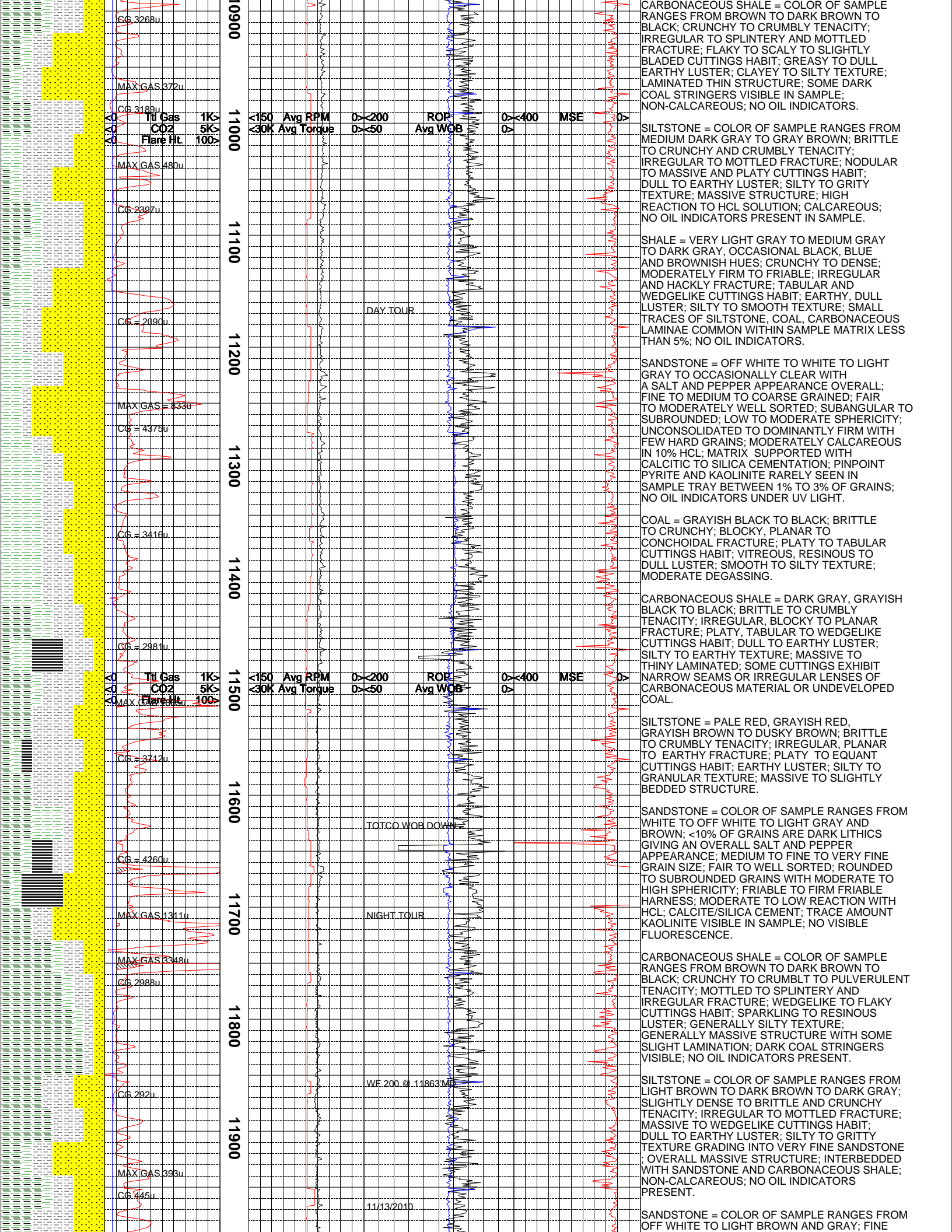


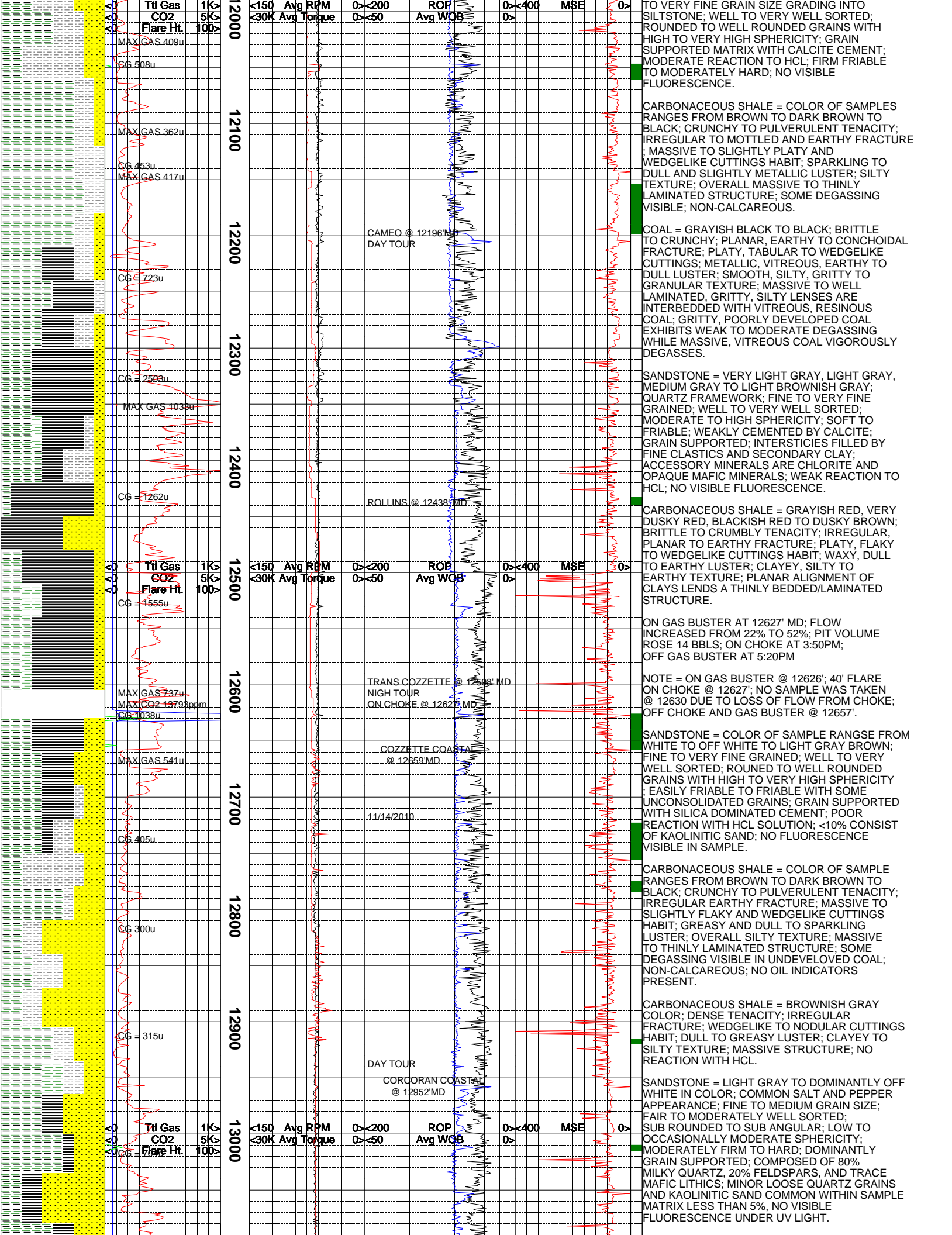




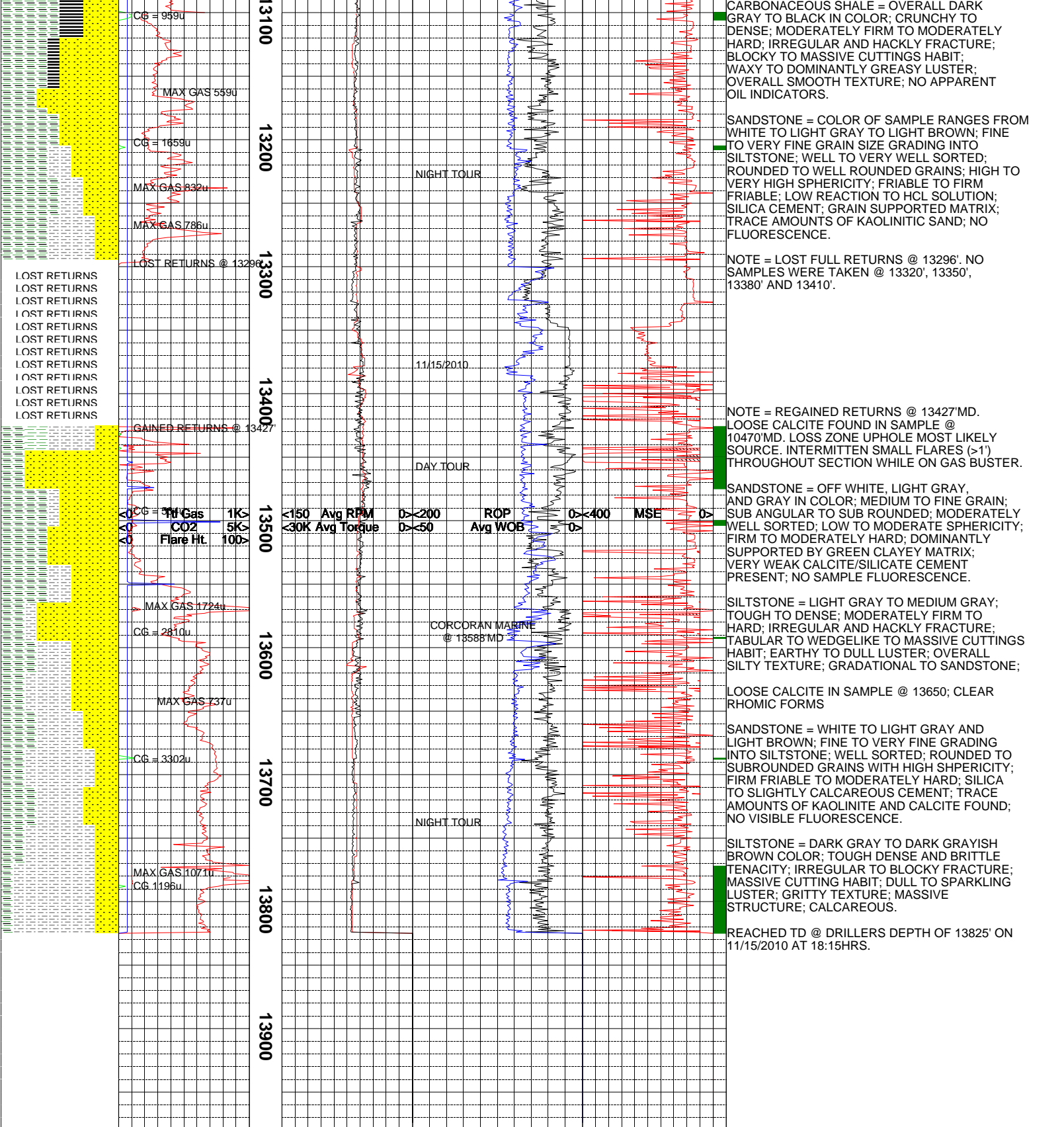












The log data, interpretations and recommendation provided by Epoch are inferences and assumptions based on measurements of drilling fluids. Such inferences and assumptions are not infallible and reasonable professionals may differ. Epoch does not represent or warrant the accuracy, correctness or completeness of any log data, interpretations, recommendations or information provided by Epoch, its officers, agents or employees. Epoch does not and cannot guarantee the accuracy of any such interpretation of the log data, interpretations or recommendations and Company is fully responsible for all decisions and actions it takes based on such log data, interpretations and recommendations.

