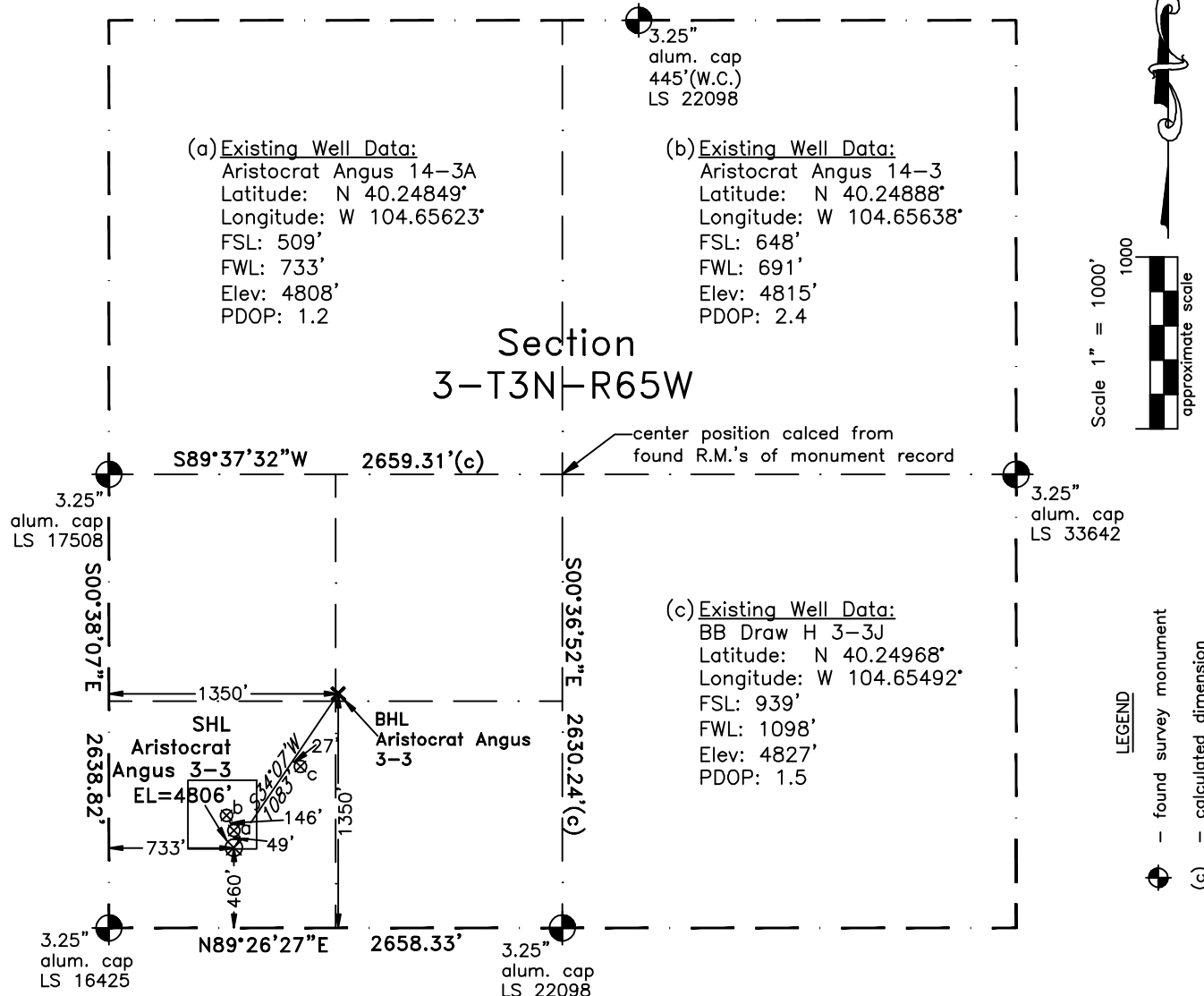


WELL LOCATION CERTIFICATE

THIS MAP DOES NOT
REPRESENT A BOUNDARY SURVEY



In accordance with a request from Dave Bale of EnCana Oil & Gas (USA) Inc., PLS Group, LLC has determined the location of the **Aristocrat Angus 3-3** well site to be SHL: 460' FSL & 733' FWL, (BHL: 1350' FSL & 1350' FWL) as measured at ninety (90) degrees from the section lines of Section 3, Township 3 North, Range 65 West of the 6th Principal Meridian, Weld County, Colorado.

Proposed Surface Hole Data:

Latitude: N 40.24836° (BHL 40.25080°)
Longitude: W 104.65623° (BHL 104.65402°)
Nearest: Building: 4025' north Above Ground Utility: 4794' northwest
Public Road: 334' southwest Railroad: 33,380' northwest
Property Line: 460' south Well Window: SHL is 1' inside
PDOP: 1.7

Notes:

- 1) Bearings and distances based on NAD 83 Colorado North State Plane Coordinates using RTK GPS observations taken 12/10/10 by operator Craig Burke.
- 2) Conversion factor to ground (1.000274972).
- 3) Elevations based on NAVD 88 GPS heights and Geoid 2003 corrections.
- 4) See improvement map for visible improvements within 400 feet.
- 5) The location falls on natural ground.

NOTICE: According to Colorado law you MUST commence any legal action based upon any defect in this W.L.C. within three years after you first discover such defect. In no event may any action based upon any defect in this W.L.C. be commenced more than ten years from this said date of the certification shown hereon.

I hereby certify that this Well Location Certificate was prepared by me or under my direct supervision on 12/15/10 for and on behalf of EnCana Oil & Gas (USA) Inc. That it is not a Land Survey Plat or an Improvement Survey Plat and that it is not to be relied upon for establishment of fences, buildings, or other future improvement lines.

John Robert McGehee PLS#38219
Well: Aristocrat Angus 3-3