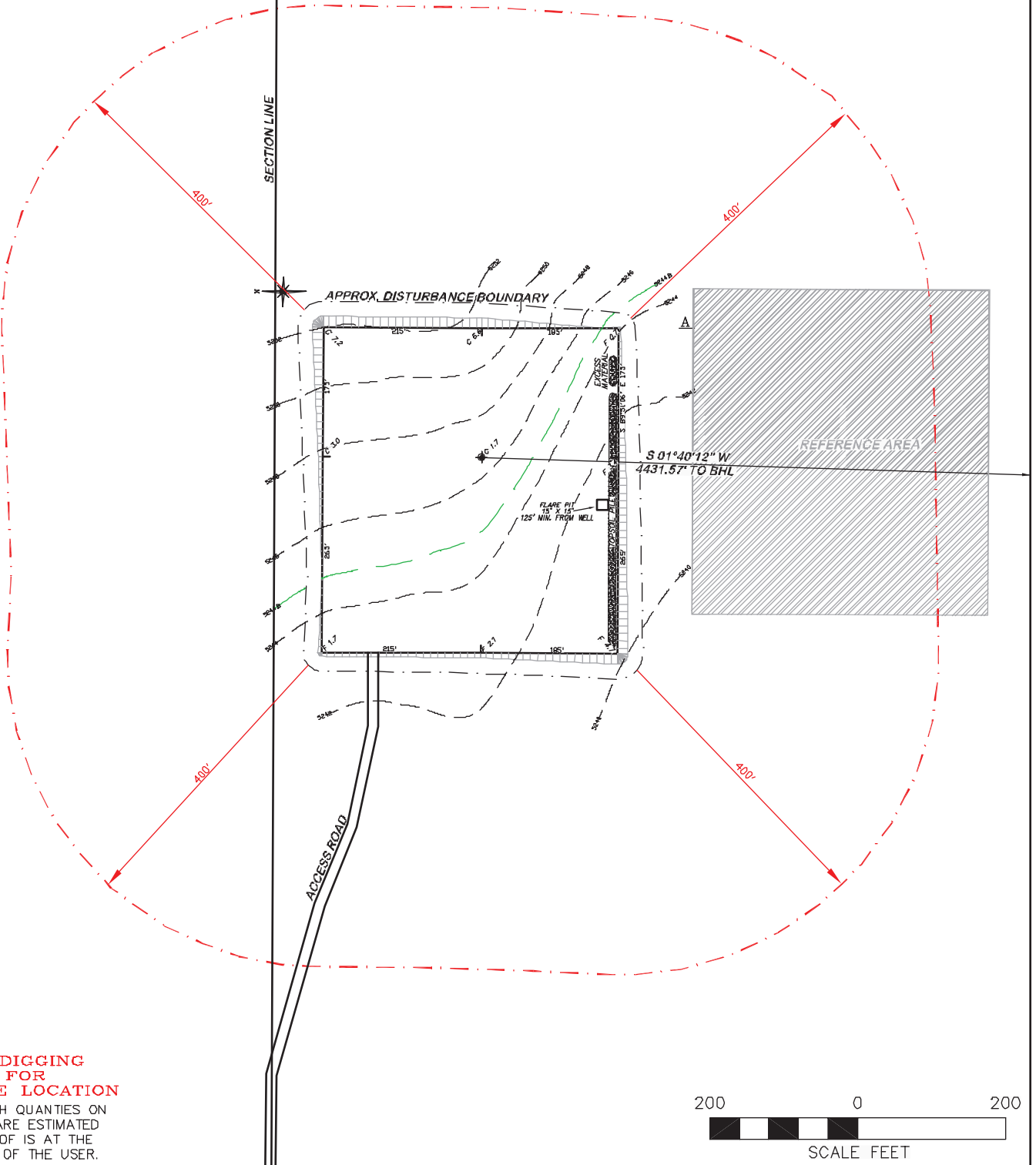



APPROXIMATE DISTURBANCE AREA: 5.2ACRES±
 2.6% GRADE ON AN SOUTHWESTERLY SLOPE
 UNGRADED ELEVATION: 5246.5'
 FINISHED ELEVATION: 5244.8'

2A ATTACHMENT
2
NO IMPROVEMENTS



**BEFORE DIGGING
 CALL FOR
 UTILITY LINE LOCATION**

NOTE: THE EARTH QUANTITIES ON
 THIS DRAWING ARE ESTIMATED
 AND THE USE OF IS AT THE
 RESPONSIBILITY OF THE USER.

 RIFFIN & ASSOCIATES, INC. (307) 362-6028 1414 ELK ST., ROCK SPRINGS, WY 82901	
DRAWN: 7/25/11 - CAE	SCALE: 1" = 200'
REVISED: NA	DRG JOB No. 18647
	EXHIBIT 2C

LOCATION DRAWING
CHESAPEAKE ENERGY, LLC. LINDSTROM 24-8-67 1H SECTION 24, T8N, R67W UNGRADED ELEVATION: 5246.5' FINISHED ELEVATION: 5244.8'