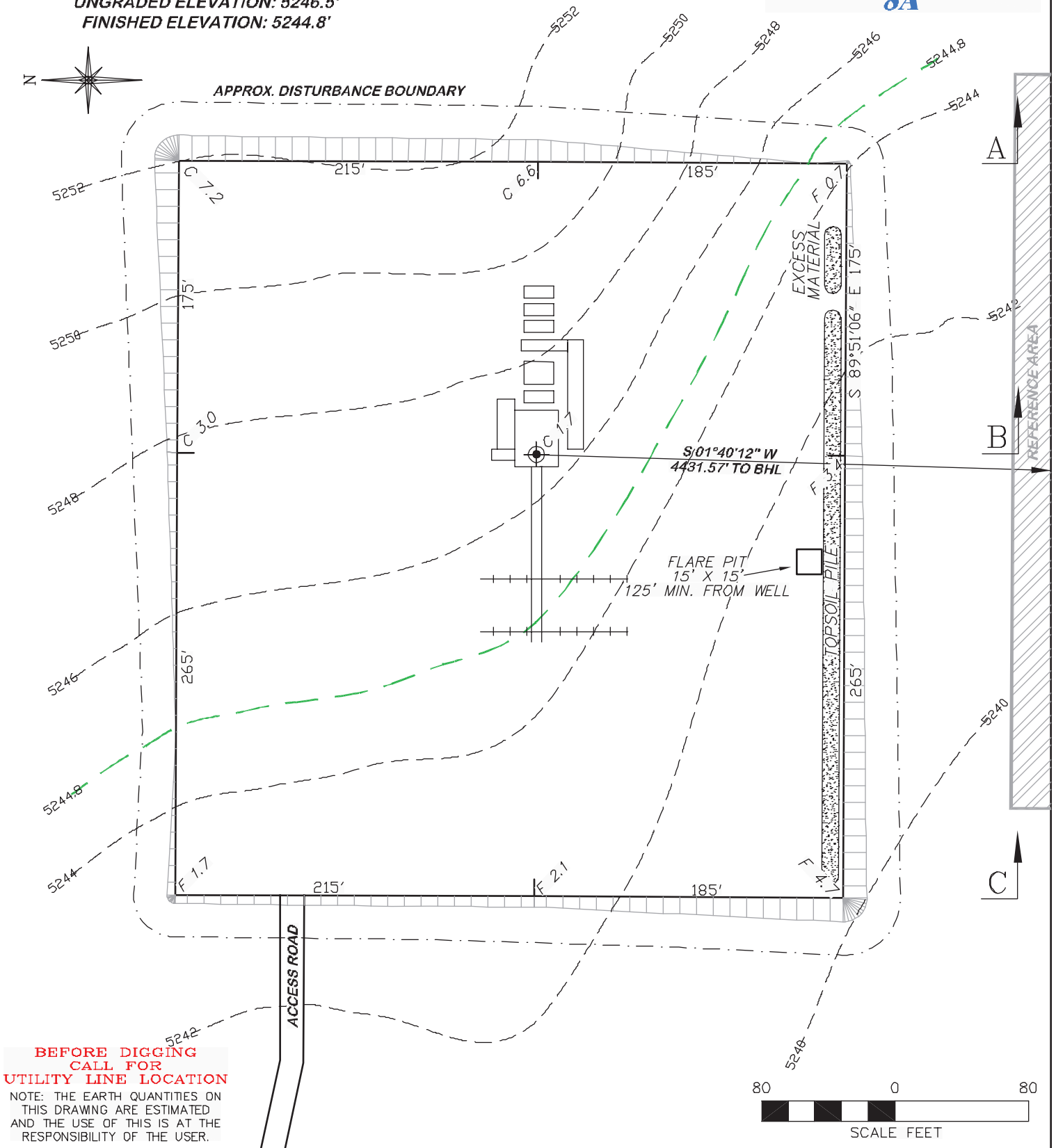


APPROXIMATE DISTURBANCE AREA: 5.2 ACRES±
 2.6% GRADE ON AN SOUTHWESTERLY SLOPE
 UNGRADED ELEVATION: 5246.5'
 FINISHED ELEVATION: 5244.8'

2A ATTACHMENT
8A



**BEFORE DIGGING
 CALL FOR
 UTILITY LINE LOCATION**

NOTE: THE EARTH QUANTITIES ON
 THIS DRAWING ARE ESTIMATED
 AND THE USE OF THIS IS AT THE
 RESPONSIBILITY OF THE USER.



RIFFIN & ASSOCIATES, INC.
 1414 ELK ST., ROCK SPRINGS, WY 82901

(307) 362-6028

DRAWN: 7/25/11 - CAE

SCALE: 1" = 80'

REVISED: NA

DRG JOB No. 18647

EXHIBIT 2

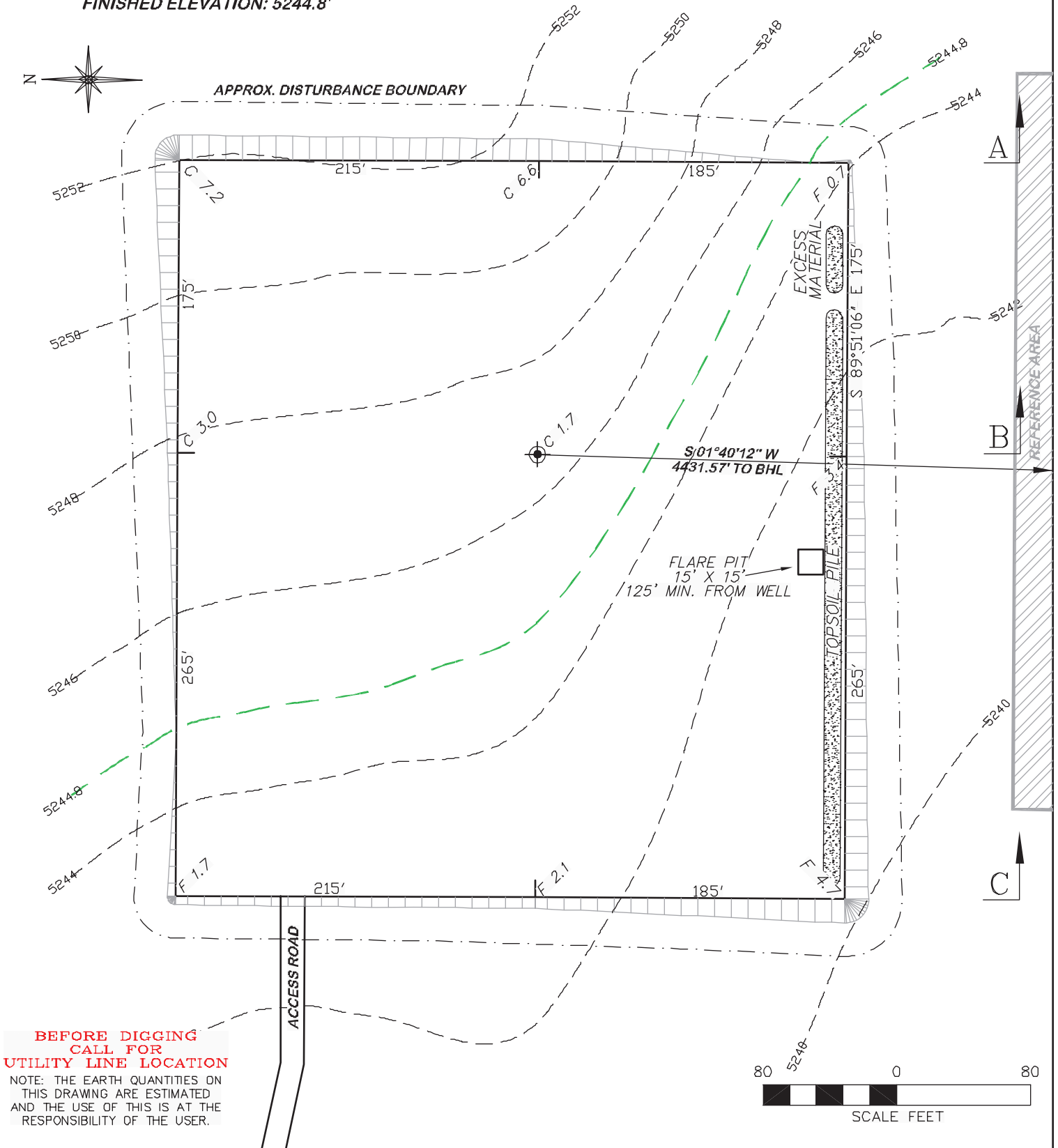
CONSTRUCTION LAYOUT DRAWING 1 OF 3

CHESAPEAKE ENERGY, LLC.
LINDSTROM 24-8-67 1H
SECTION 24, T8N, R67W

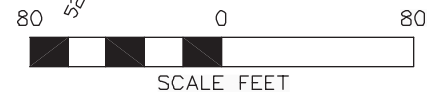
ESTIMATED EARTHWORK


ITEM	CUT	FILL	TOPSOIL	EXCESS
PAD	9451 CY	5795 CY	3262 CY	394 CY
PIT	0 CY			0 CY
TOTALS	9451 CY	5795 CY	3262 CY	394 CY

APPROXIMATE DISTURBANCE AREA: 5.2 ACRES±
 2.6% GRADE ON AN SOUTHWESTERLY SLOPE
 UNGRADED ELEVATION: 5246.5'
 FINISHED ELEVATION: 5244.8'



**BEFORE DIGGING
 CALL FOR
 UTILITY LINE LOCATION**
 NOTE: THE EARTH QUANTITIES ON
 THIS DRAWING ARE ESTIMATED
 AND THE USE OF THIS IS AT THE
 RESPONSIBILITY OF THE USER.



 RIFFIN & ASSOCIATES, INC. (307) 362-6028 1414 ELK ST., ROCK SPRINGS, WY 82901	
DRAWN: 7/25/11 - CAE	SCALE: 1" = 80'
REVISED: NA	DRG JOB No. 18647
	EXHIBIT 2A

CONSTRUCTION LAYOUT DRAWING 2 OF 3 CHESAPEAKE ENERGY, LLC. LINDSTROM 24-8-67 1H SECTION 24, T8N, R67W UNGRADED ELEVATION: 5246.5' FINISHED ELEVATION: 5244.8'
--