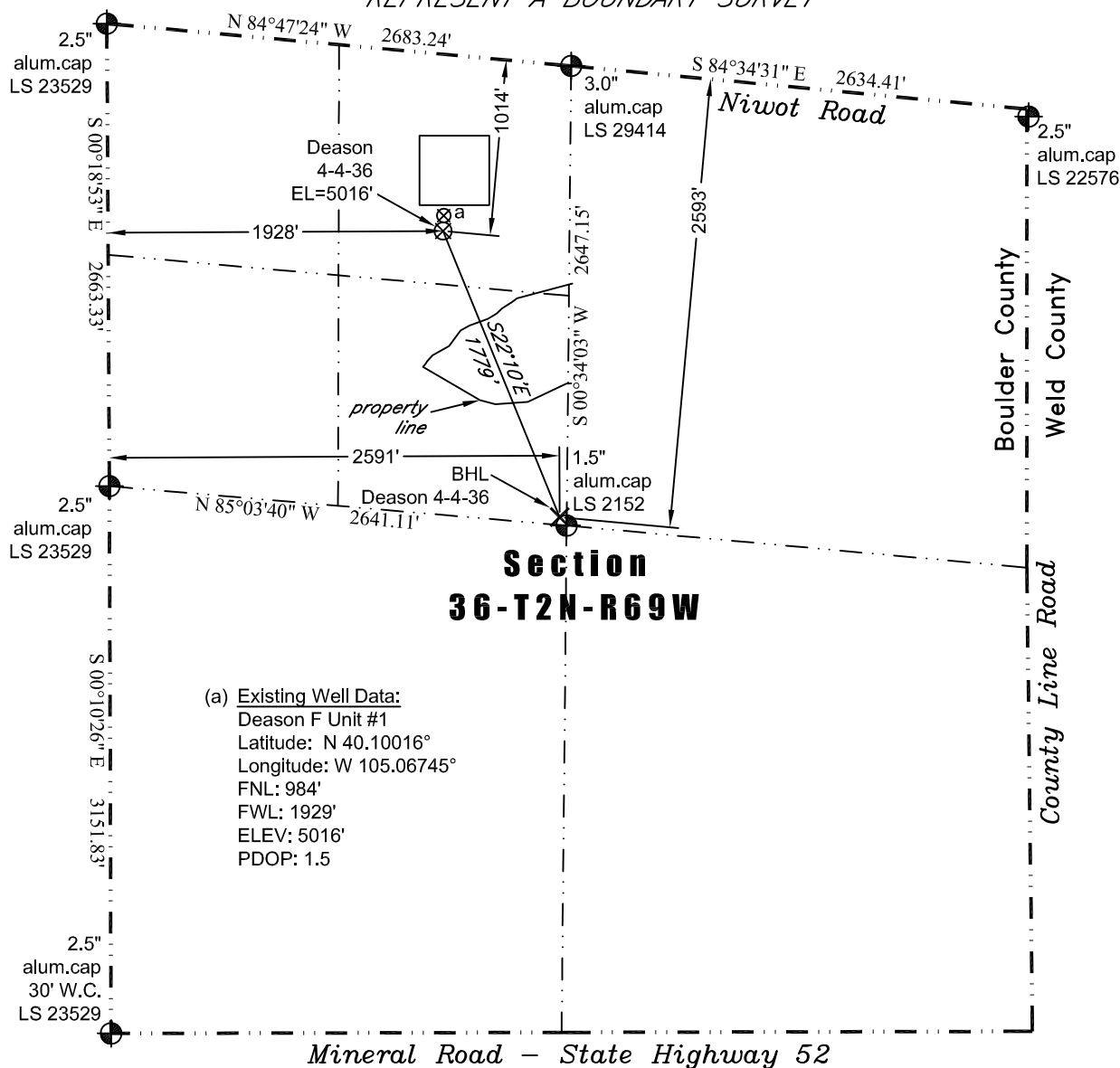


PLS Group, LLC

109 Coronado Ct. - Building No. 7
Fort Collins, Colorado 80525
P. 970-282-3446 Fx. 970-377-6767

WELL LOCATION CERTIFICATE

*THIS MAP DOES NOT
REPRESENT A BOUNDARY SURVEY*



In accordance with a request from Cathi Boles of EnCana Oil & Gas (USA) Inc., PLS Group, LLC has determined the location of the **Deason 4-4-36** well site to be 1014' FNL and 1928' FWL, (BHL 2593' FNL and 2591' FWL) as measured at ninety (90) degrees from the section lines of Section 36, Township 2 North, Range 69 West of the 6th Principal Meridian, Boulder County, Colorado.

Proposed Surface Hole Data:

Latitude: N 40.10008° (BHL 40.09555°)
Longitude: W 105.06745° (BHL 105.06508°)
PDOP: 1.2

Nearest:

Building 725' southeast	Above Ground Utility 725' east
Public Road 1,002' northeast	Railroad 16,086' southeast
Property Line: 565' southeast	Well Window: SHL is 149' outside
Existing Well: Deason F Unit #1 30' north	

Notes:

- 1) Bearings and distances based on NAD 83 Colorado North State Plane Coordinates using RTK GPS observations taken 5/17/11 by operator Tom Winans.
- 2) Conversion factor to ground (1.000276491).
- 3) Elevations based on NAVD 88 GPS heights and Geoid 2003 corrections.
- 4) See improvement map for visible improvements within 400 feet.
- 5) The surface use is irrigated cropland.

NOTICE: According to Colorado law you MUST commence any legal action based upon any defect in this W.L.C. within three years after you first discover such defect. In no event may any action based upon any defect in this W.L.C. be commenced more than ten years from this said date of the certification shown hereon.

I hereby certify that this Well Location Certificate was prepared by me or under my direct supervision on 5/25/2011 for and on behalf of EnCana Oil & Gas (USA) Inc. That it is not a Land Survey Plat or an Improvement Survey Plat and that it is not to be relied upon for establishment of fences, buildings, or other future improvement lines.

John Robert McGehee LS#38219
Well: Deason 4-4-36 WLC