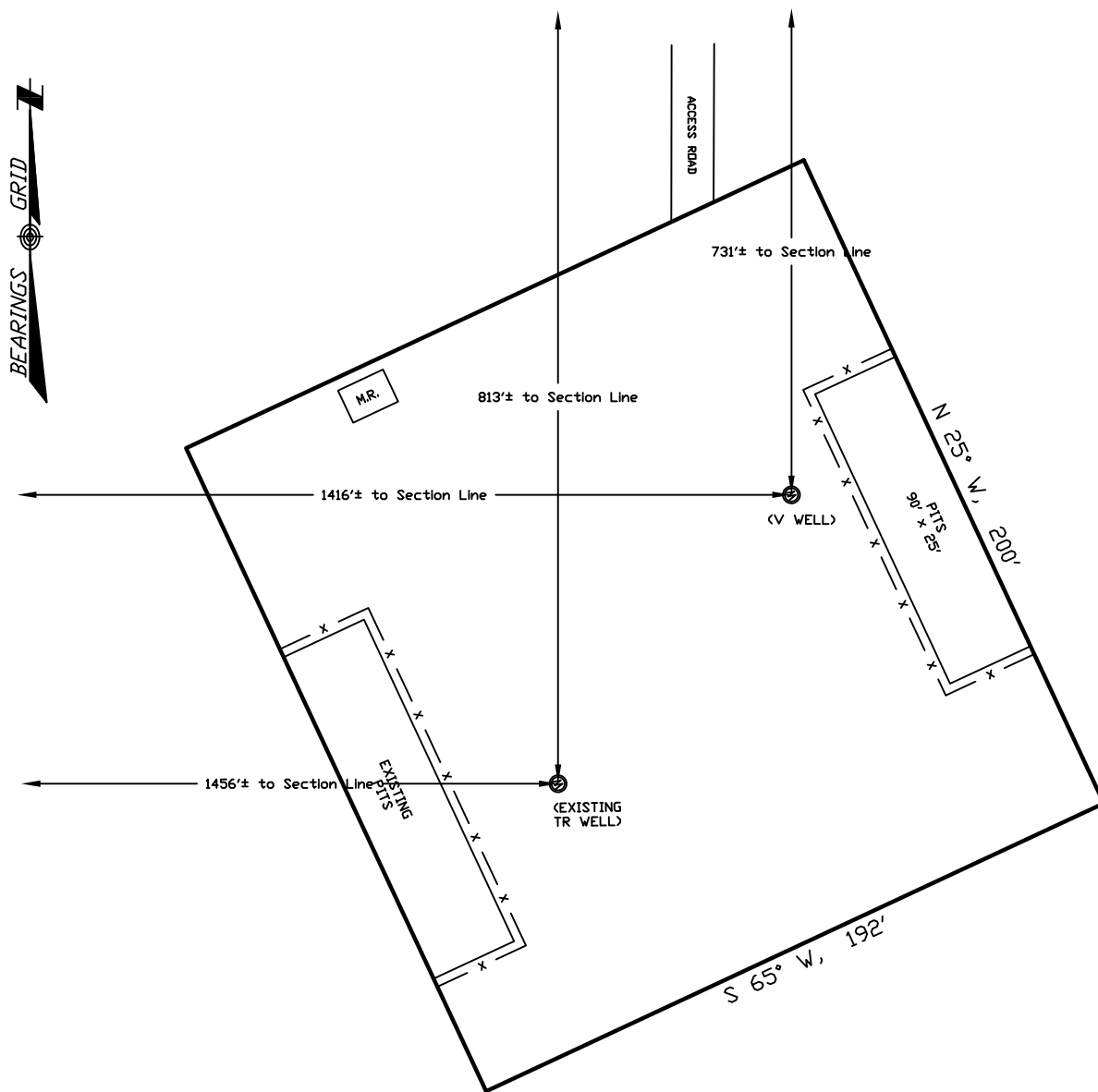


MULTI-WELL PLAT

OPERATOR: Pioneer Natural Resources

WELL NAME: Petrogulf 11-9V

NENW of SECTION 11 TOWNSHIP 33 S, RANGE 67 W OF THE 6TH P.M., IN LAS ANIMAS COUNTY



GRAPHIC SCALE



(IN FEET)

1 inch = 50 ft.

NOTE:

TR WELL WAS ESTABLISHED BY AS-BUILT DATA OBTAINED FROM PNRC TO CALCULATE DISTANCES TO SECTION LINES

MUD AND BLOW PITS WILL BE CONVERTED TO LINED EVAPORATION PITS FOR PRODUCTION.

WELLHEADS ARE TYPICALLY PCP DRIVE HEADS
July 5, 2011

Date Platted

LEGEND:

- = WELLHEAD
- = EXISTING WELLPAD
- = FENCE (4 STRAND)
- = 4" GAS GATHERING LINE
- = 2" WATER LINE
- M.R. = COMBO METER RUN AND WATER/GAS SEPERATOR
- G.D.S. = GAS DRIVE SYSTEM

SHIELDS SURVEY L^{td}. C^o.
Raton, New Mexico 87740
(575)445-1232