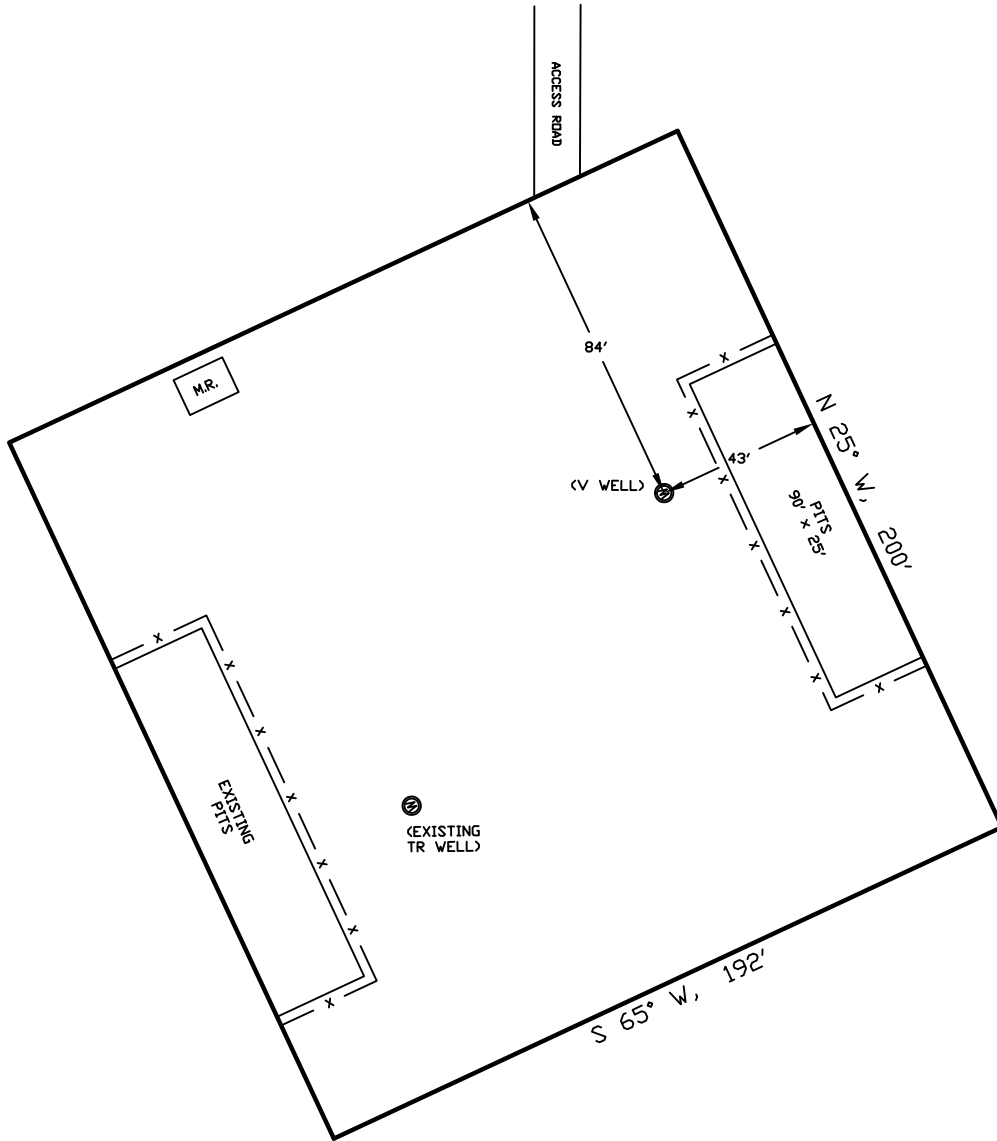


WELLSITE/PRODUCTION EQUIPMENT LAYOUT

OPERATOR: Pioneer Natural Resources

WELL NAME: Petrogulf 11-9V

NENW of SECTION 11 TOWNSHIP 33 S, RANGE 67 W OF THE 6TH P.M., IN LAS ANIMAS COUNTY



GRAPHIC SCALE



(IN FEET)

1 inch = 50 ft.

LEGEND:

- = WELLHEAD
- = EXISTING WELLPAD
- = FENCE (4 STRAND)
- = 4" GAS GATHERING LINE
- = 2" WATER LINE
- M.R. = COMBO METER RUN AND WATER/GAS SEPERATOR
- G.D.S. = GAS DRIVE SYSTEM

NOTE:

MUD AND BLOW PITS WILL BE CONVERTED TO LINED EVAPORATION PITS FOR PRODUCTION.

WELLHEADS ARE TYPICALLY PCP DRIVE HEADS

June 27, 2011

Date Platted

SHIELDS SURVEY L^{td.} C^{o.}
Raton, New Mexico 87740
(575)445-1232