

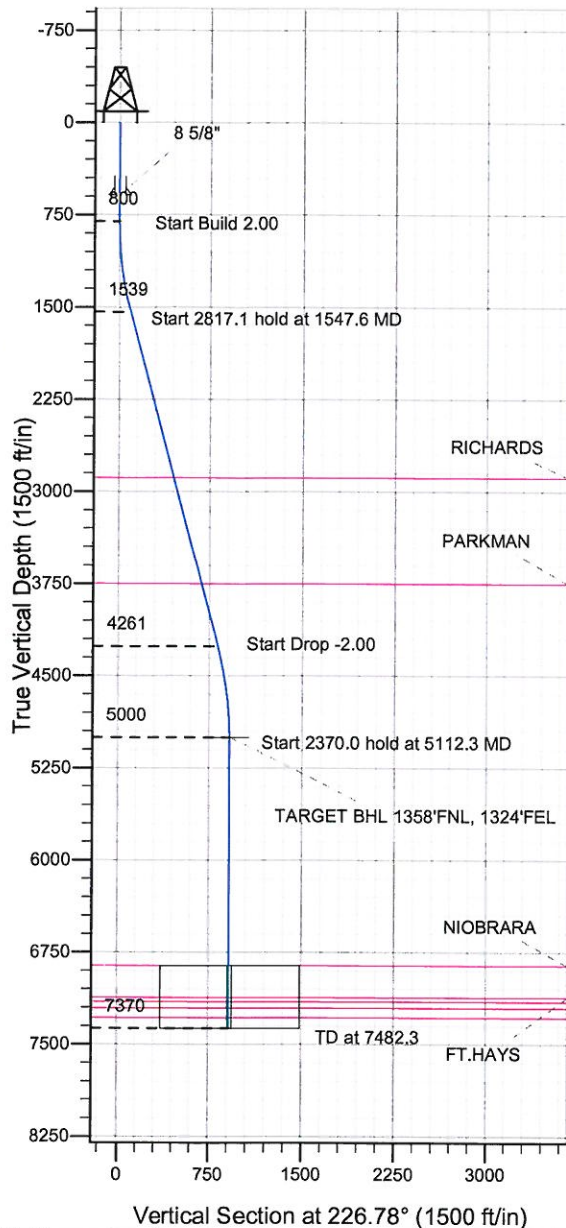
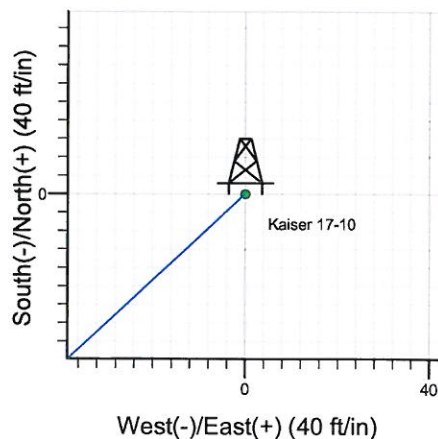
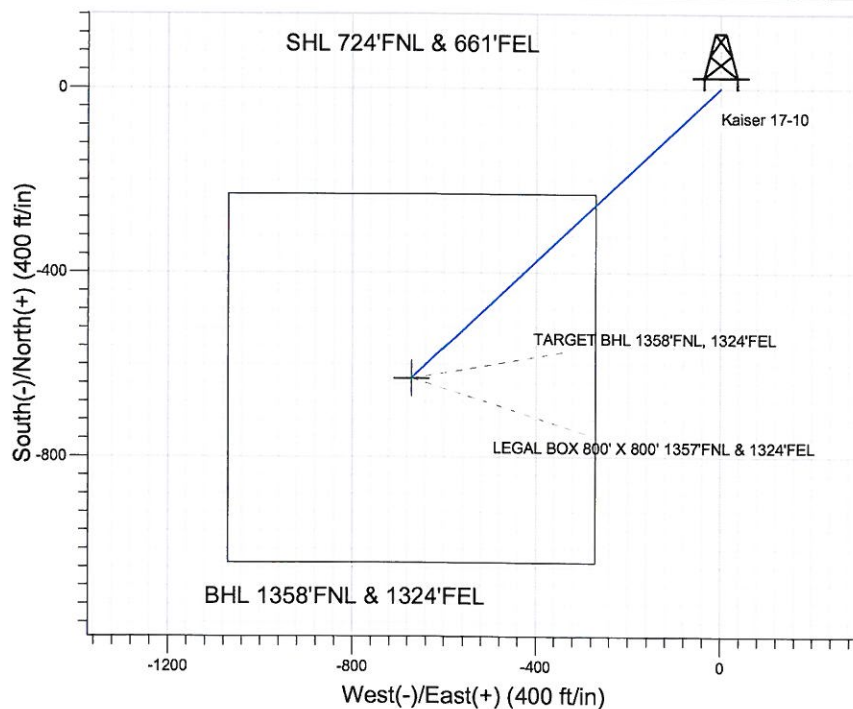
**ENSIGN****Directional****Well Name: Kaiser 17-10**

Surface Location: Kaiser 17-10 Pad Sec.10-T6N-R65W  
 North American Datum 1983 US State Plane 1983 Colorado Northern Zone

Ground Elevation: 4794.0

+N/-S	+E/-W	Northing	Easting	Latitude	Longitude	Slot
0.0	0.0	1428516.47	3238517.65	40.506512	-104.642234	

Original Well Elev WELL @ 4804.0ft (Original Well Elev)

**BAYSWATER EXPLORATION & PRODUCTION**

Kaiser 17-10 Pad Sec.10-T6N-R65W  
 Kaiser 17-10  
 Plan #1 (7-09-11)  
 10:33, July 12 2011



Azimuths to True North  
 Magnetic North: 8.80°

Magnetic Field  
 Strength: 53193.7snT  
 Dip Angle: 67.16°  
 Date: 7/9/2011  
 Model: IGRF2010

**WELLBORE TARGET DETAILS (LAT/LONG)**

Name	TVD	+N/-S	+E/-W	Latitude	Longitude	Shape
TARGET BHL 1358'FNL, 1324'FEL	5000.0	-630.6	-671.0	40.504781	-104.644647	Point
LEGAL BOX 800' X 800' 1357'FNL & 1324'FEL	6859.0	-629.6	-671.0	40.504784	-104.644647	Rectangle (Sides: L800.0 W800.0)

**SECTION DETAILS**

Sec	MD	Inc	Azi	TVD	+N/-S	+E/-W	DLeg	TFace	VSec	Target
1	0.0	0.00	0.00	0.0	0.0	0.0	0.00	0.00	0.0	
2	800.0	0.00	0.00	800.0	0.0	0.0	0.00	0.00	0.0	
3	1547.6	14.95	226.78	1539.2	-66.4	-70.7	2.00	226.78	97.0	
4	4364.7	14.95	226.78	4260.8	-564.2	-600.3	0.00	0.00	823.8	
5	5112.3	0.00	0.00	5000.0	-630.6	-671.0	2.00	180.00	920.8	TARGET BHL 1358'FNL, 1324'FEL
6	7482.3	0.00	0.00	7370.0	-630.6	-671.0	0.00	0.00	920.8	



**Directional**

## **BAYSWATER EXPLORATION & PRODUCTION**

**SEC.10-T6N-R65W**

**Kaiser 17-10 Pad Sec.10-T6N-R65W**

**Kaiser 17-10**

**Wellbore #1**

**Plan: Plan #1 (7-09-11)**

## **Standard Planning Report**

**12 July, 2011**

<b>Database:</b>	Landmark	<b>Local Co-ordinate Reference:</b>	Well Kaiser 17-10
<b>Company:</b>	BAYSWATER EXPLORATION & PRODUCTION	<b>TVD Reference:</b>	WELL @ 4804.0ft (Original Well Elev)
<b>Project:</b>	SEC.10-T6N-R65W	<b>MD Reference:</b>	WELL @ 4804.0ft (Original Well Elev)
<b>Site:</b>	Kaiser 17-10 Pad Sec.10-T6N-R65W	<b>North Reference:</b>	True
<b>Well:</b>	Kaiser 17-10	<b>Survey Calculation Method:</b>	Minimum Curvature
<b>Wellbore:</b>	Wellbore #1		
<b>Design:</b>	Plan #1 (7-09-11)		

<b>Project</b>	SEC.10-T6N-R65W		
<b>Map System:</b>	US State Plane 1983	<b>System Datum:</b>	Mean Sea Level
<b>Geo Datum:</b>	North American Datum 1983		Using Well Reference Point
<b>Map Zone:</b>	Colorado Northern Zone		Using geodetic scale factor

Site		Kaiser 17-10 Pad Sec.10-T6N-R65W			
Site Position:		Northing:	1,428,516.47 ft	Latitude:	40.506512
From:	Lat/Long	Easting:	3,238,517.65 ft	Longitude:	-104.642234
Position Uncertainty:	0.0 ft	Slot Radius:	"	Grid Convergence:	0.55 °

Well	Kaiser 17-10					
Well Position	+N/-S	0.0 ft	Northing:	1,428,516.47 ft	Latitude:	40.506512
	+E/-W	0.0 ft	Easting:	3,238,517.65 ft	Longitude:	-104.642234
Position Uncertainty		0.0 ft	Wellhead Elevation:	ft	Ground Level:	4,794.0 ft

<b>Wellbore</b>	Wellbore #1				
<b>Magnetics</b>	<b>Model Name</b>	<b>Sample Date</b>	<b>Declination (°)</b>	<b>Dip Angle (°)</b>	<b>Field Strength (nT)</b>
	IGRF2010	7/9/2011	8.80	67.16	53,194

<b>Design</b>	Plan #1 (7-09-11)				
---------------	-------------------	--	--	--	--

<b>Audit Notes:</b>					
<b>Version:</b>	<b>Phase:</b>	PROTOTYPE	<b>Tie On Depth:</b>	0.0	
<b>Vertical Section:</b>	<b>Depth From (TVD) (ft)</b>	<b>+N/-S (ft)</b>	<b>+E/-W (ft)</b>	<b>Direction (°)</b>	
	0.0	0.0	0.0	226.78	

<b>Plan Sections</b>										
Measured Depth (ft)	Inclination (°)	Azimuth (°)	Vertical Depth (ft)	+N/-S (ft)	+E/-W (ft)	Dogleg Rate (°/100ft)	Build Rate (°/100ft)	Turn Rate (°/100ft)	TFO (°)	Target
0.0	0.00	0.00	0.0	0.0	0.0	0.00	0.00	0.00	0.00	
800.0	0.00	0.00	800.0	0.0	0.0	0.00	0.00	0.00	0.00	
1,547.6	14.95	226.78	1,539.2	-66.4	-70.7	2.00	2.00	0.00	226.78	
4,364.7	14.95	226.78	4,260.8	-564.2	-600.3	0.00	0.00	0.00	0.00	
5,112.3	0.00	0.00	5,000.0	-630.6	-671.0	2.00	-2.00	0.00	180.00	TARGET BHL 135E
7,482.3	0.00	0.00	7,370.0	-630.6	-671.0	0.00	0.00	0.00	0.00	



<b>Database:</b>	Landmark	<b>Local Co-ordinate Reference:</b>	Well Kaiser 17-10
<b>Company:</b>	BAYSWATER EXPLORATION & PRODUCTION	<b>TVD Reference:</b>	WELL @ 4804.0ft (Original Well Elev)
<b>Project:</b>	SEC.10-T6N-R65W	<b>MD Reference:</b>	WELL @ 4804.0ft (Original Well Elev)
<b>Site:</b>	Kaiser 17-10 Pad Sec.10-T6N-R65W	<b>North Reference:</b>	True
<b>Well:</b>	Kaiser 17-10	<b>Survey Calculation Method:</b>	Minimum Curvature
<b>Wellbore:</b>	Wellbore #1		
<b>Design:</b>	Plan #1 (7-09-11)		

Planned Survey									
Measured Depth (ft)	Inclination (°)	Azimuth (°)	Vertical Depth (ft)	+N/-S (ft)	+E/-W (ft)	Vertical Section (ft)	Dogleg Rate (°/100ft)	Build Rate (°/100ft)	Turn Rate (°/100ft)
0.0	0.00	0.00	0.0	0.0	0.0	0.0	0.00	0.00	0.00
40.0	0.00	0.00	40.0	0.0	0.0	0.0	0.00	0.00	0.00
80.0	0.00	0.00	80.0	0.0	0.0	0.0	0.00	0.00	0.00
120.0	0.00	0.00	120.0	0.0	0.0	0.0	0.00	0.00	0.00
160.0	0.00	0.00	160.0	0.0	0.0	0.0	0.00	0.00	0.00
200.0	0.00	0.00	200.0	0.0	0.0	0.0	0.00	0.00	0.00
240.0	0.00	0.00	240.0	0.0	0.0	0.0	0.00	0.00	0.00
280.0	0.00	0.00	280.0	0.0	0.0	0.0	0.00	0.00	0.00
320.0	0.00	0.00	320.0	0.0	0.0	0.0	0.00	0.00	0.00
360.0	0.00	0.00	360.0	0.0	0.0	0.0	0.00	0.00	0.00
400.0	0.00	0.00	400.0	0.0	0.0	0.0	0.00	0.00	0.00
440.0	0.00	0.00	440.0	0.0	0.0	0.0	0.00	0.00	0.00
480.0	0.00	0.00	480.0	0.0	0.0	0.0	0.00	0.00	0.00
520.0	0.00	0.00	520.0	0.0	0.0	0.0	0.00	0.00	0.00
560.0	0.00	0.00	560.0	0.0	0.0	0.0	0.00	0.00	0.00
585.0	0.00	0.00	585.0	0.0	0.0	0.0	0.00	0.00	0.00
8 5/8"									
600.0	0.00	0.00	600.0	0.0	0.0	0.0	0.00	0.00	0.00
640.0	0.00	0.00	640.0	0.0	0.0	0.0	0.00	0.00	0.00
680.0	0.00	0.00	680.0	0.0	0.0	0.0	0.00	0.00	0.00
720.0	0.00	0.00	720.0	0.0	0.0	0.0	0.00	0.00	0.00
760.0	0.00	0.00	760.0	0.0	0.0	0.0	0.00	0.00	0.00
800.0	0.00	0.00	800.0	0.0	0.0	0.0	0.00	0.00	0.00
840.0	0.80	226.78	840.0	-0.2	-0.2	0.3	2.00	2.00	0.00
880.0	1.60	226.78	880.0	-0.8	-0.8	1.1	2.00	2.00	0.00
920.0	2.40	226.78	920.0	-1.7	-1.8	2.5	2.00	2.00	0.00
960.0	3.20	226.78	959.9	-3.1	-3.3	4.5	2.00	2.00	0.00
1,000.0	4.00	226.78	999.8	-4.8	-5.1	7.0	2.00	2.00	0.00
1,040.0	4.80	226.78	1,039.7	-6.9	-7.3	10.0	2.00	2.00	0.00
1,080.0	5.60	226.78	1,079.6	-9.4	-10.0	13.7	2.00	2.00	0.00
1,120.0	6.40	226.78	1,119.3	-12.2	-13.0	17.9	2.00	2.00	0.00
1,160.0	7.20	226.78	1,159.1	-15.5	-16.5	22.6	2.00	2.00	0.00
1,200.0	8.00	226.78	1,198.7	-19.1	-20.3	27.9	2.00	2.00	0.00
1,240.0	8.80	226.78	1,238.3	-23.1	-24.6	33.7	2.00	2.00	0.00
1,280.0	9.60	226.78	1,277.8	-27.5	-29.2	40.1	2.00	2.00	0.00
1,320.0	10.40	226.78	1,317.1	-32.2	-34.3	47.1	2.00	2.00	0.00
1,360.0	11.20	226.78	1,356.4	-37.4	-39.8	54.6	2.00	2.00	0.00
1,400.0	12.00	226.78	1,395.6	-42.9	-45.6	62.6	2.00	2.00	0.00
1,440.0	12.80	226.78	1,434.7	-48.8	-51.9	71.2	2.00	2.00	0.00
1,480.0	13.60	226.78	1,473.6	-55.0	-58.5	80.3	2.00	2.00	0.00
1,520.0	14.40	226.78	1,512.4	-61.6	-65.6	90.0	2.00	2.00	0.00
1,547.6	14.95	226.78	1,539.2	-66.4	-70.7	97.0	2.00	2.00	0.00
1,560.0	14.95	226.78	1,551.1	-68.6	-73.0	100.2	0.00	0.00	0.00
1,600.0	14.95	226.78	1,589.8	-75.7	-80.5	110.5	0.00	0.00	0.00
1,640.0	14.95	226.78	1,628.4	-82.8	-88.1	120.8	0.00	0.00	0.00
1,680.0	14.95	226.78	1,667.1	-89.8	-95.6	131.2	0.00	0.00	0.00
1,720.0	14.95	226.78	1,705.7	-96.9	-103.1	141.5	0.00	0.00	0.00
1,760.0	14.95	226.78	1,744.4	-104.0	-110.6	151.8	0.00	0.00	0.00
1,800.0	14.95	226.78	1,783.0	-111.0	-118.1	162.1	0.00	0.00	0.00
1,840.0	14.95	226.78	1,821.6	-118.1	-125.7	172.4	0.00	0.00	0.00
1,880.0	14.95	226.78	1,860.3	-125.2	-133.2	182.8	0.00	0.00	0.00
1,920.0	14.95	226.78	1,898.9	-132.2	-140.7	193.1	0.00	0.00	0.00
1,960.0	14.95	226.78	1,937.6	-139.3	-148.2	203.4	0.00	0.00	0.00

<b>Database:</b>	Landmark	<b>Local Co-ordinate Reference:</b>	Well Kaiser 17-10
<b>Company:</b>	BAYSWATER EXPLORATION & PRODUCTION	<b>TVD Reference:</b>	WELL @ 4804.0ft (Original Well Elev)
<b>Project:</b>	SEC.10-T6N-R65W	<b>MD Reference:</b>	WELL @ 4804.0ft (Original Well Elev)
<b>Site:</b>	Kaiser 17-10 Pad Sec.10-T6N-R65W	<b>North Reference:</b>	True
<b>Well:</b>	Kaiser 17-10	<b>Survey Calculation Method:</b>	Minimum Curvature
<b>Wellbore:</b>	Wellbore #1		
<b>Design:</b>	Plan #1 (7-09-11)		

Planned Survey									
Measured Depth (ft)	Inclination (°)	Azimuth (°)	Vertical Depth (ft)	+N/-S (ft)	+E/-W (ft)	Vertical Section (ft)	Dogleg Rate (°/100ft)	Build Rate (°/100ft)	Turn Rate (°/100ft)
2,000.0	14.95	226.78	1,976.2	-146.4	-155.7	213.7	0.00	0.00	0.00
2,040.0	14.95	226.78	2,014.9	-153.4	-163.3	224.0	0.00	0.00	0.00
2,080.0	14.95	226.78	2,053.5	-160.5	-170.8	234.4	0.00	0.00	0.00
2,120.0	14.95	226.78	2,092.2	-167.6	-178.3	244.7	0.00	0.00	0.00
2,160.0	14.95	226.78	2,130.8	-174.6	-185.8	255.0	0.00	0.00	0.00
2,200.0	14.95	226.78	2,169.5	-181.7	-193.3	265.3	0.00	0.00	0.00
2,240.0	14.95	226.78	2,208.1	-188.8	-200.9	275.6	0.00	0.00	0.00
2,280.0	14.95	226.78	2,246.7	-195.8	-208.4	286.0	0.00	0.00	0.00
2,320.0	14.95	226.78	2,285.4	-202.9	-215.9	296.3	0.00	0.00	0.00
2,360.0	14.95	226.78	2,324.0	-210.0	-223.4	306.6	0.00	0.00	0.00
2,400.0	14.95	226.78	2,362.7	-217.0	-230.9	316.9	0.00	0.00	0.00
2,440.0	14.95	226.78	2,401.3	-224.1	-238.5	327.2	0.00	0.00	0.00
2,480.0	14.95	226.78	2,440.0	-231.2	-246.0	337.6	0.00	0.00	0.00
2,520.0	14.95	226.78	2,478.6	-238.2	-253.5	347.9	0.00	0.00	0.00
2,560.0	14.95	226.78	2,517.3	-245.3	-261.0	358.2	0.00	0.00	0.00
2,600.0	14.95	226.78	2,555.9	-252.4	-268.6	368.5	0.00	0.00	0.00
2,640.0	14.95	226.78	2,594.6	-259.4	-276.1	378.9	0.00	0.00	0.00
2,680.0	14.95	226.78	2,633.2	-266.5	-283.6	389.2	0.00	0.00	0.00
2,720.0	14.95	226.78	2,671.8	-273.6	-291.1	399.5	0.00	0.00	0.00
2,760.0	14.95	226.78	2,710.5	-280.7	-298.6	409.8	0.00	0.00	0.00
2,800.0	14.95	226.78	2,749.1	-287.7	-306.2	420.1	0.00	0.00	0.00
2,840.0	14.95	226.78	2,787.8	-294.8	-313.7	430.5	0.00	0.00	0.00
2,880.0	14.95	226.78	2,826.4	-301.9	-321.2	440.8	0.00	0.00	0.00
2,920.0	14.95	226.78	2,865.1	-308.9	-328.7	451.1	0.00	0.00	0.00
2,944.8	14.95	226.78	2,889.0	-313.3	-333.4	457.5	0.00	0.00	0.00
<b>RICHARDS</b>									
2,960.0	14.95	226.78	2,903.7	-316.0	-336.2	461.4	0.00	0.00	0.00
3,000.0	14.95	226.78	2,942.4	-323.1	-343.8	471.7	0.00	0.00	0.00
3,040.0	14.95	226.78	2,981.0	-330.1	-351.3	482.1	0.00	0.00	0.00
3,080.0	14.95	226.78	3,019.7	-337.2	-358.8	492.4	0.00	0.00	0.00
3,120.0	14.95	226.78	3,058.3	-344.3	-366.3	502.7	0.00	0.00	0.00
3,160.0	14.95	226.78	3,096.9	-351.3	-373.8	513.0	0.00	0.00	0.00
3,200.0	14.95	226.78	3,135.6	-358.4	-381.4	523.3	0.00	0.00	0.00
3,240.0	14.95	226.78	3,174.2	-365.5	-388.9	533.7	0.00	0.00	0.00
3,280.0	14.95	226.78	3,212.9	-372.5	-396.4	544.0	0.00	0.00	0.00
3,320.0	14.95	226.78	3,251.5	-379.6	-403.9	554.3	0.00	0.00	0.00
3,360.0	14.95	226.78	3,290.2	-386.7	-411.4	564.6	0.00	0.00	0.00
3,400.0	14.95	226.78	3,328.8	-393.7	-419.0	574.9	0.00	0.00	0.00
3,440.0	14.95	226.78	3,367.5	-400.8	-426.5	585.3	0.00	0.00	0.00
3,480.0	14.95	226.78	3,406.1	-407.9	-434.0	595.6	0.00	0.00	0.00
3,520.0	14.95	226.78	3,444.8	-414.9	-441.5	605.9	0.00	0.00	0.00
3,560.0	14.95	226.78	3,483.4	-422.0	-449.1	616.2	0.00	0.00	0.00
3,600.0	14.95	226.78	3,522.1	-429.1	-456.6	626.5	0.00	0.00	0.00
3,640.0	14.95	226.78	3,560.7	-436.1	-464.1	636.9	0.00	0.00	0.00
3,680.0	14.95	226.78	3,599.3	-443.2	-471.6	647.2	0.00	0.00	0.00
3,720.0	14.95	226.78	3,638.0	-450.3	-479.1	657.5	0.00	0.00	0.00
3,760.0	14.95	226.78	3,676.6	-457.3	-486.7	667.8	0.00	0.00	0.00
3,800.0	14.95	226.78	3,715.3	-464.4	-494.2	678.2	0.00	0.00	0.00
3,834.9	14.95	226.78	3,749.0	-470.6	-500.7	687.2	0.00	0.00	0.00
<b>PARKMAN</b>									
3,840.0	14.95	226.78	3,753.9	-471.5	-501.7	688.5	0.00	0.00	0.00
3,880.0	14.95	226.78	3,792.6	-478.5	-509.2	698.8	0.00	0.00	0.00
3,920.0	14.95	226.78	3,831.2	-485.6	-516.7	709.1	0.00	0.00	0.00



<b>Database:</b>	Landmark	<b>Local Co-ordinate Reference:</b>	Well Kaiser 17-10
<b>Company:</b>	BAYSWATER EXPLORATION & PRODUCTION	<b>TVD Reference:</b>	WELL @ 4804.0ft (Original Well Elev)
<b>Project:</b>	SEC.10-T6N-R65W	<b>MD Reference:</b>	WELL @ 4804.0ft (Original Well Elev)
<b>Site:</b>	Kaiser 17-10 Pad Sec.10-T6N-R65W	<b>North Reference:</b>	True
<b>Well:</b>	Kaiser 17-10	<b>Survey Calculation Method:</b>	Minimum Curvature
<b>Wellbore:</b>	Wellbore #1		
<b>Design:</b>	Plan #1 (7-09-11)		

Planned Survey									
Measured Depth (ft)	Inclination (°)	Azimuth (°)	Vertical Depth (ft)	+N/-S (ft)	+E/-W (ft)	Vertical Section (ft)	Dogleg Rate (°/100ft)	Build Rate (°/100ft)	Turn Rate (°/100ft)
3,960.0	14.95	226.78	3,869.9	-492.7	-524.3	719.4	0.00	0.00	0.00
4,000.0	14.95	226.78	3,908.5	-499.8	-531.8	729.8	0.00	0.00	0.00
4,040.0	14.95	226.78	3,947.2	-506.8	-539.3	740.1	0.00	0.00	0.00
4,080.0	14.95	226.78	3,985.8	-513.9	-546.8	750.4	0.00	0.00	0.00
4,120.0	14.95	226.78	4,024.4	-521.0	-554.3	760.7	0.00	0.00	0.00
4,160.0	14.95	226.78	4,063.1	-528.0	-561.9	771.0	0.00	0.00	0.00
4,200.0	14.95	226.78	4,101.7	-535.1	-569.4	781.4	0.00	0.00	0.00
4,240.0	14.95	226.78	4,140.4	-542.2	-576.9	791.7	0.00	0.00	0.00
4,280.0	14.95	226.78	4,179.0	-549.2	-584.4	802.0	0.00	0.00	0.00
4,320.0	14.95	226.78	4,217.7	-556.3	-591.9	812.3	0.00	0.00	0.00
4,360.0	14.95	226.78	4,256.3	-563.4	-599.5	822.6	0.00	0.00	0.00
4,364.7	14.95	226.78	4,260.8	-564.2	-600.3	823.8	0.00	0.00	0.00
4,400.0	14.25	226.78	4,295.0	-570.3	-606.8	832.8	2.00	-2.00	0.00
4,440.0	13.45	226.78	4,333.9	-576.8	-613.8	842.3	2.00	-2.00	0.00
4,480.0	12.65	226.78	4,372.8	-583.0	-620.4	851.4	2.00	-2.00	0.00
4,520.0	11.85	226.78	4,411.9	-588.8	-626.6	859.8	2.00	-2.00	0.00
4,560.0	11.05	226.78	4,451.1	-594.3	-632.4	867.8	2.00	-2.00	0.00
4,600.0	10.25	226.78	4,490.4	-599.3	-637.7	875.2	2.00	-2.00	0.00
4,640.0	9.45	226.78	4,529.8	-604.0	-642.7	882.0	2.00	-2.00	0.00
4,680.0	8.65	226.78	4,569.3	-608.3	-647.3	888.3	2.00	-2.00	0.00
4,720.0	7.85	226.78	4,608.9	-612.3	-651.5	894.0	2.00	-2.00	0.00
4,760.0	7.05	226.78	4,648.6	-615.8	-655.3	899.2	2.00	-2.00	0.00
4,800.0	6.25	226.78	4,688.3	-619.0	-658.6	903.8	2.00	-2.00	0.00
4,840.0	5.45	226.78	4,728.1	-621.8	-661.6	907.9	2.00	-2.00	0.00
4,880.0	4.65	226.78	4,768.0	-624.2	-664.2	911.4	2.00	-2.00	0.00
4,920.0	3.85	226.78	4,807.8	-626.2	-666.3	914.4	2.00	-2.00	0.00
4,960.0	3.05	226.78	4,847.8	-627.8	-668.1	916.8	2.00	-2.00	0.00
5,000.0	2.25	226.78	4,887.7	-629.1	-669.4	918.6	2.00	-2.00	0.00
5,040.0	1.45	226.78	4,927.7	-630.0	-670.4	919.9	2.00	-2.00	0.00
5,080.0	0.65	226.78	4,967.7	-630.5	-670.9	920.7	2.00	-2.00	0.00
5,112.3	0.00	0.00	5,000.0	-630.6	-671.0	920.8	2.00	-2.00	412.47
TARGET BHL 1358'FNL, 1324'FEL									
5,120.0	0.00	0.00	5,007.7	-630.6	-671.0	920.8	0.00	0.00	0.00
5,160.0	0.00	0.00	5,047.7	-630.6	-671.0	920.8	0.00	0.00	0.00
5,200.0	0.00	0.00	5,087.7	-630.6	-671.0	920.8	0.00	0.00	0.00
5,240.0	0.00	0.00	5,127.7	-630.6	-671.0	920.8	0.00	0.00	0.00
5,280.0	0.00	0.00	5,167.7	-630.6	-671.0	920.8	0.00	0.00	0.00
5,320.0	0.00	0.00	5,207.7	-630.6	-671.0	920.8	0.00	0.00	0.00
5,360.0	0.00	0.00	5,247.7	-630.6	-671.0	920.8	0.00	0.00	0.00
5,400.0	0.00	0.00	5,287.7	-630.6	-671.0	920.8	0.00	0.00	0.00
5,440.0	0.00	0.00	5,327.7	-630.6	-671.0	920.8	0.00	0.00	0.00
5,480.0	0.00	0.00	5,367.7	-630.6	-671.0	920.8	0.00	0.00	0.00
5,520.0	0.00	0.00	5,407.7	-630.6	-671.0	920.8	0.00	0.00	0.00
5,560.0	0.00	0.00	5,447.7	-630.6	-671.0	920.8	0.00	0.00	0.00
5,600.0	0.00	0.00	5,487.7	-630.6	-671.0	920.8	0.00	0.00	0.00
5,640.0	0.00	0.00	5,527.7	-630.6	-671.0	920.8	0.00	0.00	0.00
5,680.0	0.00	0.00	5,567.7	-630.6	-671.0	920.8	0.00	0.00	0.00
5,720.0	0.00	0.00	5,607.7	-630.6	-671.0	920.8	0.00	0.00	0.00
5,760.0	0.00	0.00	5,647.7	-630.6	-671.0	920.8	0.00	0.00	0.00
5,800.0	0.00	0.00	5,687.7	-630.6	-671.0	920.8	0.00	0.00	0.00
5,840.0	0.00	0.00	5,727.7	-630.6	-671.0	920.8	0.00	0.00	0.00
5,880.0	0.00	0.00	5,767.7	-630.6	-671.0	920.8	0.00	0.00	0.00
5,920.0	0.00	0.00	5,807.7	-630.6	-671.0	920.8	0.00	0.00	0.00

<b>Database:</b>	Landmark	<b>Local Co-ordinate Reference:</b>	Well Kaiser 17-10
<b>Company:</b>	BAYSWATER EXPLORATION & PRODUCTION	<b>TVD Reference:</b>	WELL @ 4804.0ft (Original Well Elev)
<b>Project:</b>	SEC.10-T6N-R65W	<b>MD Reference:</b>	WELL @ 4804.0ft (Original Well Elev)
<b>Site:</b>	Kaiser 17-10 Pad Sec.10-T6N-R65W	<b>North Reference:</b>	True
<b>Well:</b>	Kaiser 17-10	<b>Survey Calculation Method:</b>	Minimum Curvature
<b>Wellbore:</b>	Wellbore #1		
<b>Design:</b>	Plan #1 (7-09-11)		

### Planned Survey

Measured Depth (ft)	Inclination (°)	Azimuth (°)	Vertical Depth (ft)	+N/-S (ft)	+E/-W (ft)	Vertical Section (ft)	Dogleg Rate (°/100ft)	Build Rate (°/100ft)	Turn Rate (°/100ft)
5,960.0	0.00	0.00	5,847.7	-630.6	-671.0	920.8	0.00	0.00	0.00
6,000.0	0.00	0.00	5,887.7	-630.6	-671.0	920.8	0.00	0.00	0.00
6,040.0	0.00	0.00	5,927.7	-630.6	-671.0	920.8	0.00	0.00	0.00
6,080.0	0.00	0.00	5,967.7	-630.6	-671.0	920.8	0.00	0.00	0.00
6,120.0	0.00	0.00	6,007.7	-630.6	-671.0	920.8	0.00	0.00	0.00
6,160.0	0.00	0.00	6,047.7	-630.6	-671.0	920.8	0.00	0.00	0.00
6,200.0	0.00	0.00	6,087.7	-630.6	-671.0	920.8	0.00	0.00	0.00
6,240.0	0.00	0.00	6,127.7	-630.6	-671.0	920.8	0.00	0.00	0.00
6,280.0	0.00	0.00	6,167.7	-630.6	-671.0	920.8	0.00	0.00	0.00
6,320.0	0.00	0.00	6,207.7	-630.6	-671.0	920.8	0.00	0.00	0.00
6,360.0	0.00	0.00	6,247.7	-630.6	-671.0	920.8	0.00	0.00	0.00
6,400.0	0.00	0.00	6,287.7	-630.6	-671.0	920.8	0.00	0.00	0.00
6,440.0	0.00	0.00	6,327.7	-630.6	-671.0	920.8	0.00	0.00	0.00
6,480.0	0.00	0.00	6,367.7	-630.6	-671.0	920.8	0.00	0.00	0.00
6,520.0	0.00	0.00	6,407.7	-630.6	-671.0	920.8	0.00	0.00	0.00
6,560.0	0.00	0.00	6,447.7	-630.6	-671.0	920.8	0.00	0.00	0.00
6,600.0	0.00	0.00	6,487.7	-630.6	-671.0	920.8	0.00	0.00	0.00
6,640.0	0.00	0.00	6,527.7	-630.6	-671.0	920.8	0.00	0.00	0.00
6,680.0	0.00	0.00	6,567.7	-630.6	-671.0	920.8	0.00	0.00	0.00
6,720.0	0.00	0.00	6,607.7	-630.6	-671.0	920.8	0.00	0.00	0.00
6,760.0	0.00	0.00	6,647.7	-630.6	-671.0	920.8	0.00	0.00	0.00
6,800.0	0.00	0.00	6,687.7	-630.6	-671.0	920.8	0.00	0.00	0.00
6,840.0	0.00	0.00	6,727.7	-630.6	-671.0	920.8	0.00	0.00	0.00
6,880.0	0.00	0.00	6,767.7	-630.6	-671.0	920.8	0.00	0.00	0.00
6,920.0	0.00	0.00	6,807.7	-630.6	-671.0	920.8	0.00	0.00	0.00
6,960.0	0.00	0.00	6,847.7	-630.6	-671.0	920.8	0.00	0.00	0.00
6,971.3	0.00	0.00	6,859.0	-630.6	-671.0	920.8	0.00	0.00	0.00
<b>NIOBRARA - LEGAL BOX 800' X 800' 1357'FNL &amp; 1324'FEL</b>									
7,000.0	0.00	0.00	6,887.7	-630.6	-671.0	920.8	0.00	0.00	0.00
7,040.0	0.00	0.00	6,927.7	-630.6	-671.0	920.8	0.00	0.00	0.00
7,080.0	0.00	0.00	6,967.7	-630.6	-671.0	920.8	0.00	0.00	0.00
7,120.0	0.00	0.00	7,007.7	-630.6	-671.0	920.8	0.00	0.00	0.00
7,160.0	0.00	0.00	7,047.7	-630.6	-671.0	920.8	0.00	0.00	0.00
7,200.0	0.00	0.00	7,087.7	-630.6	-671.0	920.8	0.00	0.00	0.00
7,232.3	0.00	0.00	7,120.0	-630.6	-671.0	920.8	0.00	0.00	0.00
<b>FT.HAYS</b>									
7,240.0	0.00	0.00	7,127.7	-630.6	-671.0	920.8	0.00	0.00	0.00
7,266.3	0.00	0.00	7,154.0	-630.6	-671.0	920.8	0.00	0.00	0.00
<b>CODELL</b>									
7,280.0	0.00	0.00	7,167.7	-630.6	-671.0	920.8	0.00	0.00	0.00
7,316.3	0.00	0.00	7,204.0	-630.6	-671.0	920.8	0.00	0.00	0.00
<b>GREENHORN</b>									
7,320.0	0.00	0.00	7,207.7	-630.6	-671.0	920.8	0.00	0.00	0.00
7,360.0	0.00	0.00	7,247.7	-630.6	-671.0	920.8	0.00	0.00	0.00
7,396.3	0.00	0.00	7,284.0	-630.6	-671.0	920.8	0.00	0.00	0.00
<b>GRANEROS</b>									
7,400.0	0.00	0.00	7,287.7	-630.6	-671.0	920.8	0.00	0.00	0.00
7,440.0	0.00	0.00	7,327.7	-630.6	-671.0	920.8	0.00	0.00	0.00
7,480.0	0.00	0.00	7,367.7	-630.6	-671.0	920.8	0.00	0.00	0.00
7,482.3	0.00	0.00	7,370.0	-630.6	-671.0	920.8	0.00	0.00	0.00



<b>Database:</b>	Landmark	<b>Local Co-ordinate Reference:</b>	Well Kaiser 17-10
<b>Company:</b>	BAYSWATER EXPLORATION & PRODUCTION	<b>TVD Reference:</b>	WELL @ 4804.0ft (Original Well Elev)
<b>Project:</b>	SEC.10-T6N-R65W	<b>MD Reference:</b>	WELL @ 4804.0ft (Original Well Elev)
<b>Site:</b>	Kaiser 17-10 Pad Sec.10-T6N-R65W	<b>North Reference:</b>	True
<b>Well:</b>	Kaiser 17-10	<b>Survey Calculation Method:</b>	Minimum Curvature
<b>Wellbore:</b>	Wellbore #1		
<b>Design:</b>	Plan #1 (7-09-11)		

Targets									
Target Name									
- hit/miss target	Dip Angle	Dip Dir.	TVD	+N/-S	+E/-W	Northing	Easting	Latitude	Longitude
- Shape	(°)	(°)	(ft)	(ft)	(ft)	(ft)	(ft)		
TARGET BHL 1358'F	0.00	0.00	5,000.0	-630.6	-671.0	1,427,879.41	3,237,852.78	40.504781	-104.644647
- plan hits target center									
- Point									
LEGAL BOX 800' X 800'	0.00	0.00	6,859.0	-629.6	-671.0	1,427,880.43	3,237,852.80	40.504784	-104.644647
- plan misses target center by 1.0ft at 6971.3ft MD (6859.0 TVD, -630.6 N, -671.0 E)									
- Rectangle (sides W800.0 H800.0 D511.0)									

Casing Points				
Measured Depth (ft)	Vertical Depth (ft)	Name	Casing Diameter (")	Hole Diameter (")
585.0	585.0	8 5/8"	8-5/8	12-1/4

Formations					
Measured Depth (ft)	Vertical Depth (ft)	Name	Lithology	Dip (°)	Dip Direction (°)
2,944.8	2,889.0	RICHARDS		0.00	
3,834.9	3,749.0	PARKMAN		0.00	
6,971.3	6,859.0	NIOBRARA		0.00	
7,232.3	7,120.0	FT.HAYS		0.00	
7,266.3	7,154.0	CODELL		0.00	
7,316.3	7,204.0	GREENHORN		0.00	
7,396.3	7,284.0	GRANEROS		0.00	