

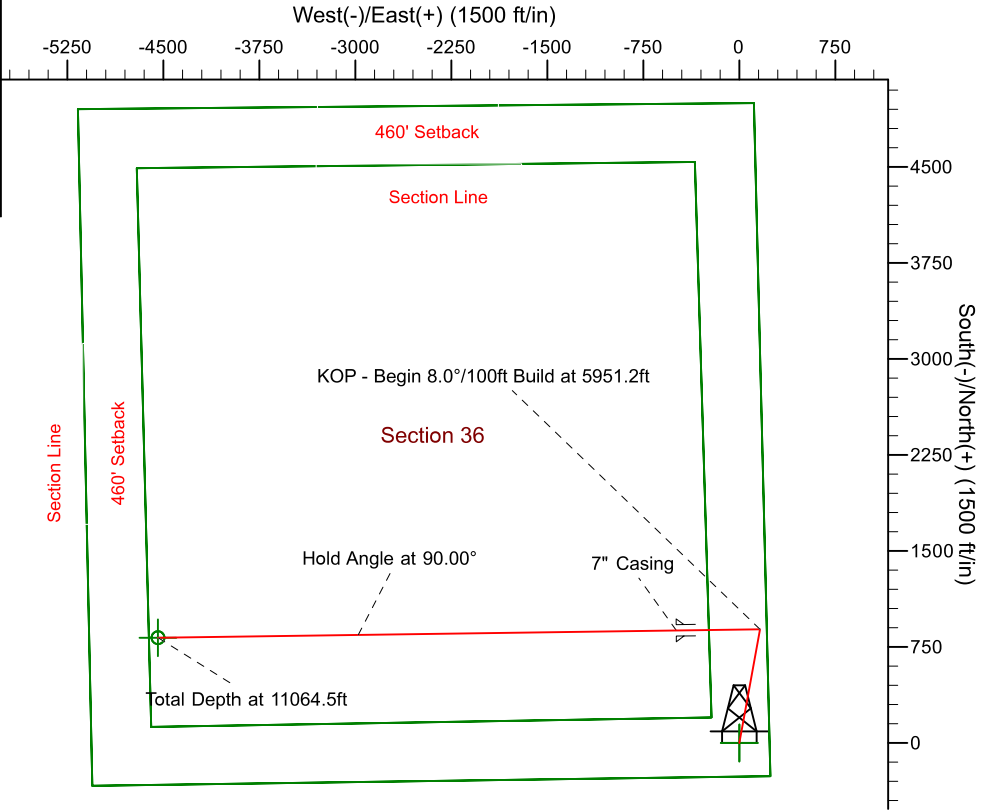
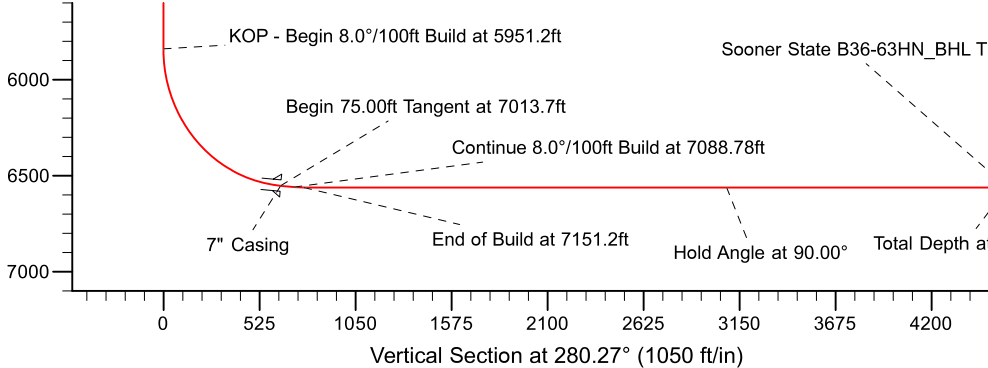
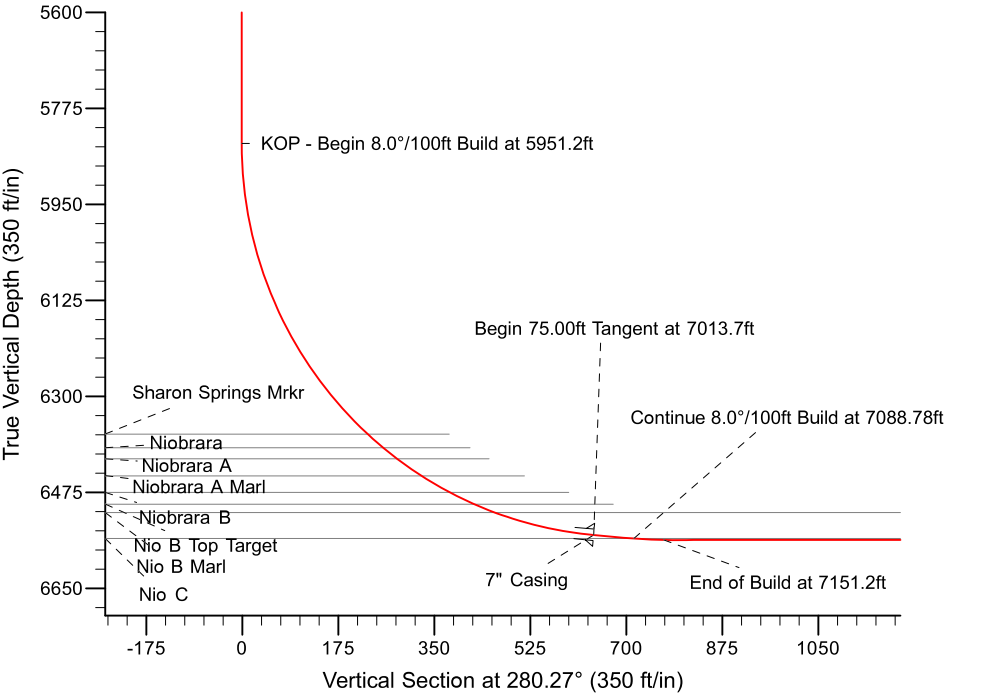
Project: Weld County, CO (NAD 83)
Site: Sec. 36, T5N, R64W
Well: Sooner State B36-63HN
Wellbore: Plan A - REV 0 (PERMITTING PLAN ONLY)
Design: Plan A - Rev 0 Proposal

Noble Energy



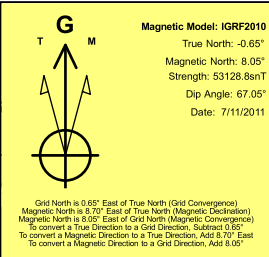
SECTION DETAILS

Sec	MD	Inc	Azi	TVD	+N/-S	+E/-W	Dleg	TFace	VSec	Target
1	0.0	0.00	0.00	0.0	0.0	0.0	0.00	0.00	0.0	
2	1200.0	0.00	0.00	1200.0	0.0	0.0	0.00	0.00	0.0	
3	1800.0	15.00	10.34	1793.2	76.8	14.0	2.50	10.34	-0.1	
4	4683.9	15.00	10.34	4578.8	811.2	148.0	0.00	0.00	-1.0	
5	5283.9	0.00	0.00	5172.0	888.0	162.0	2.50	180.00	-1.1	
6	5951.2	0.00	0.00	5839.3	888.0	162.0	0.00	0.00	-1.1	
7	7013.7	85.00	269.21	6552.8	879.0	-491.7	8.00	269.21	640.5	
8	7088.7	85.00	269.21	6559.3	878.0	-566.4	0.00	0.00	713.9	
9	7151.2	90.00	269.21	6562.0	877.1	-628.8	8.00	0.00	775.1	
10	11064.5	90.00	269.21	6562.0	823.0	-4541.7	0.00	-72.40	4615.6	Sooner State B36-63HN_BHL Tgt



Casing Pt: 1152' FSL, 709' FEL Surface: 262' FSL, 235' FEL

BHL: 1150' FSL 535' FWL



WELL DETAILS: Sooner State B36-63HN (NAD83 Geodetic System)				
Ground Level: 4600.0				
Northing	Easting	Latitude	Longitude	
418106.23	1000282.83	40° 20' 57.876 N	104° 29' 20.616 W	
n: Plan A - Rev 0 Proposal (Sooner State B36-63HN/Plan A - REV 0 (PERMITTING PLAN ONLY))				
Created By: Jose Patino			Date: 9:24, July 12 2011	
<div></div>				