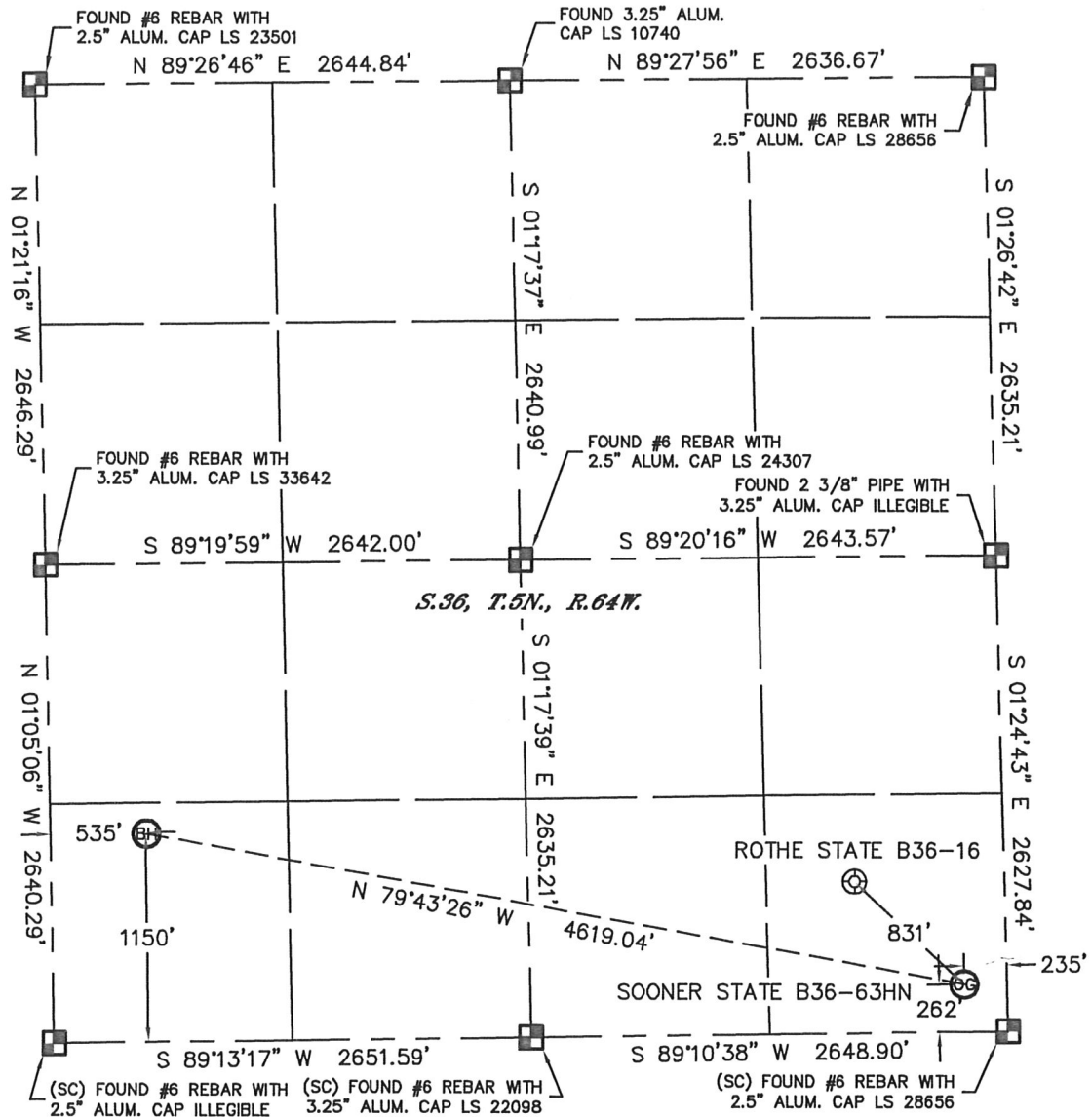


WELL LOCATION CERTIFICATE

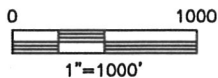
SECTION: 36
TOWNSHIP: 5N
RANGE: 64W

THIS MAP DOES NOT REPRESENT A BOUNDARY SURVEY



In accordance with a request from Brian Derose with Noble Energy Inc., Lat40°, Inc. has determined the surface location of the SOONER STATE B36-63HN to be 262' from the SOUTH line and 235' from the EAST line and the bottom hole to be 1150' from the SOUTH line and 535' from the WEST line as measured at right angles from the section lines of Section 36, Township 5 North, Range 64 West of the Sixth Principal Meridian, County of Weld, State of Colorado.

I hereby state that this Well Location Certificate was prepared by me, or under my direct supervision, that the fieldwork was completed on 5/17/11, for and on behalf of Noble Energy Inc. That this is not a Land Survey Plat or an Improvement Survey Plat, and that it is not to be relied upon for establishment of fence, building, or other future improvement lines.



NOTE:

- 1) Bearings shown are Grid Bearings of the Colorado State Plane Coordinate System, North Zone, North American Datum 1983/2007. The lineal dimensions as contained herein are based upon the "U.S. Survey Foot."
- 2) Ground elevations are based on an observed GPS elevation (NAVD 1988 DATUM).
- 3) NEAREST EXISTING WELL: ROTHE STATE B36-16 831'
- 4) IMPROVEMENTS: See LOCATION DRAWING for all visible improvements within 400' of disturbed area.
- 5) SURFACE USE: PASTURE
- 6) INSTRUMENT OPERATOR: ADAM KELLY



SURFACE LOCATION
LATITUDE: 40.34941°N
LONGITUDE: 104.48906°W
PDOP: 1.8
ELEV: 4600'
1/4, 1/4: SE1/4SE1/4
NEAREST PROPERTY LINE: 235' EAST

BOTTOM HOLE
LATITUDE: 40.35181°N
LONGITUDE: 104.50532°W

NOTE

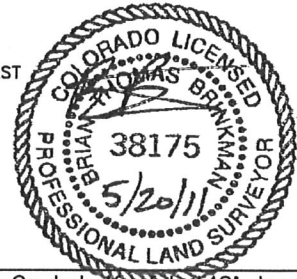
According to Colorado law, you must commence any legal action based upon any defect in this W.L.C. within three years after you discover such defect. In no event, may any action based upon any defect in this survey be commenced more than ten years after the date of the certificate shown hereon. (13-80-105 C.R.S.)

LEGEND

-  = ALIQUOT MONUMENT AS DESCRIBED
-  = CALCULATED POSITION

Brian T. Brinkman—On behalf of Lat40°, Inc.
Colorado Licensed Professional
Land Surveyor No. 38175

PROJECT#: 2011122

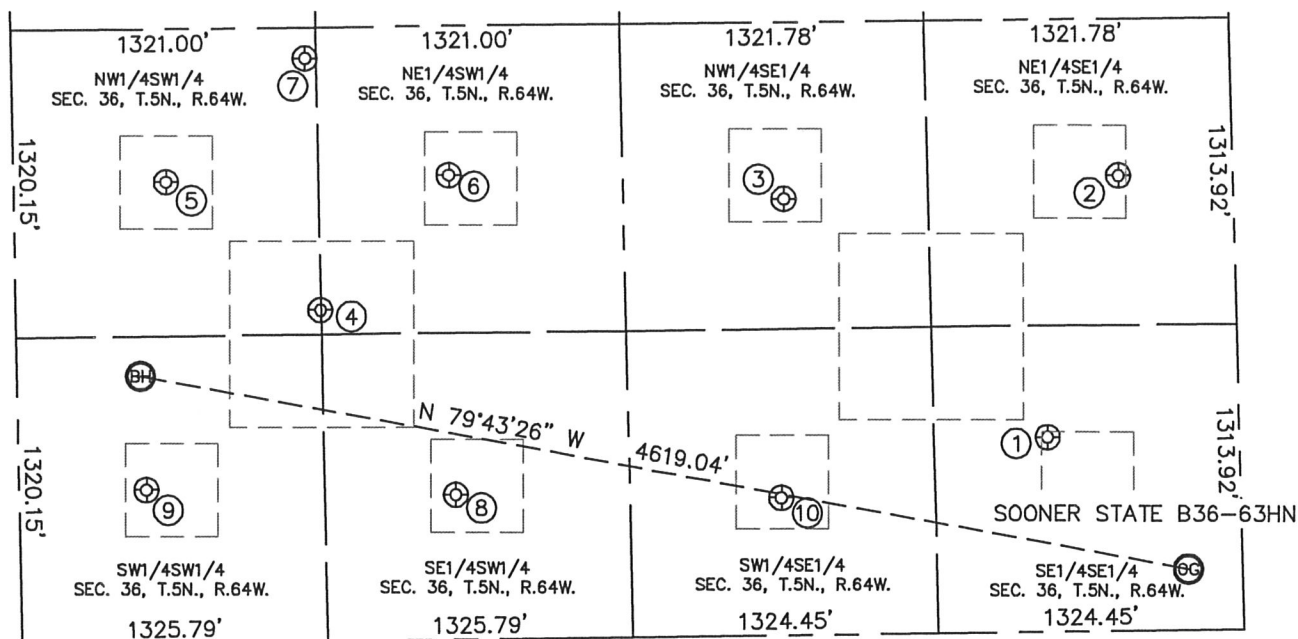


Lat40°, Inc. 1635 Foxtrail Drive, Suite 325 Loveland, CO 970-776-3321

SITE SKETCH

SOONER STATE B36-63HN

SECTION: 36
TOWNSHIP: 5N
RANGE: 64W



- | | | | | |
|---|---|---|---|--|
| ① ROTHE STATE B36-16 SE1/4SE1/4 836' FSL 830' FEL LAT-40.35098°N LONG-104.49122°W PDOP: 1.4 ELEV: 4596' | ② ROTHE STATE B36-09 NE1/4SE1/4 1956' FSL 494' FEL LAT-40.35405°N LONG-104.49007°W PDOP: 1.8 ELEV: 4593' | ③ ROTHE STATE B36-10 NW1/4SE1/4 1874' FSL 1949' FEL LAT-40.35381°N LONG-104.49528°W PDOP: 1.8 ELEV: 4597' | ④ CLYNCKE STATE B36-25 NW1/4SW1/4 1424' FSL 1320' FWL LAT-40.35257°N LONG-104.50252°W PDOP: 1.7 ELEV: 4603' | ⑤ BAKER STATE B36-12 NW1/4SW1/4 1982' FSL 661' FWL LAT-40.35409°N LONG-104.50489°W PDOP: 2.0 ELEV: 4601' |
| ⑥ BAKER STATE B36-11 NE1/4SW1/4 1995' FSL 1887' FWL LAT-40.35414°N LONG-104.50050°W PDOP: 1.9 ELEV: 4599' | ⑦ CLYNCKE STATE B36-20 NW1/4SW1/4 2505' FSL 1273' FWL LAT-40.35553°N LONG-104.50272°W PDOP: 2.9 ELEV: 4596' | ⑧ BAKER STATE B36-14 SE1/4SW1/4 623' FSL 1892' FWL LAT-40.35037°N LONG-104.50044°W PDOP: 1.8 ELEV: 4603' | ⑨ BAKER STATE B36-13 SW1/4SW1/4 662' FSL 551' FWL LAT-40.35047°N LONG-104.50525°W PDOP: 5.3 ELEV: 4607' | ⑩ ROTHE STATE B36-15 SW1/4SE1/4 592' FSL 1991' FEL LAT-40.35030°N LONG-104.49537°W PDOP: 2.1 ELEV: 4598' |

