

T4N, R90W, 6th. P.M.

SWEPI LP

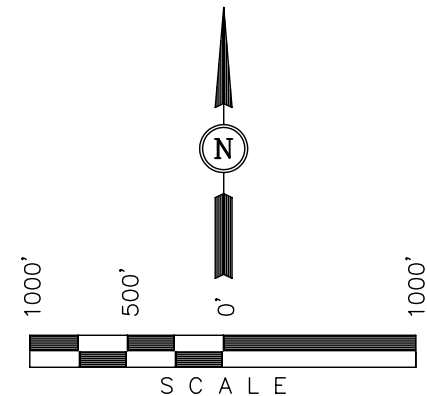
Well location, HART GULCH #1-17, located as shown in the NW 1/4 SE 1/4 of Section 17, T4N, R90W, 6th. P.M., Moffat County, Colorado.

BASIS OF ELEVATION

SPOT ELEVATION AT THE NORTHEAST CORNER OF SECTION 31, T5N, R90W, 6th P.M. TAKEN FROM THE HAMILTON QUADRANGLE, COLORADO, MOFFAT COUNTY, 7.5 MINUTE QUAD (TOPOGRAPHIC MAP) PUBLISHED BY THE UNITED STATES DEPARTMENT OF THE INTERIOR, GEOLOGICAL SURVEY. SAID ELEVATION IS MARKED AS BEING 6664 FEET.

BASIS OF BEARINGS

BASIS OF BEARINGS IS A G.P.S. OBSERVATION.



CERTIFICATE

THIS IS TO CERTIFY THAT THE ABOVE PLAT WAS PREPARED FROM FIELD NOTES OF ACTUAL SURVEYS MADE BY ME OR UNDER MY SUPERVISION AND THAT THE SAME ARE TRUE AND CORRECT TO THE BEST OF MY KNOWLEDGE AND BELIEF.

REGISTERED LAND SURVEYOR
REGISTRATION NO. 17492
STATE OF COLORADO

REV.: 07-22-11
REV.: 07-13-11

UINTAH ENGINEERING & LAND SURVEYING
85 SOUTH 200 EAST - VERNAL, UTAH 84078
(435) 789-1017

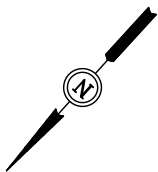
LEGEND:

- └─┘ = 90° SYMBOL
● = PROPOSED WELL HEAD.
▲ = SECTION CORNERS LOCATED

PDOP = 2.0

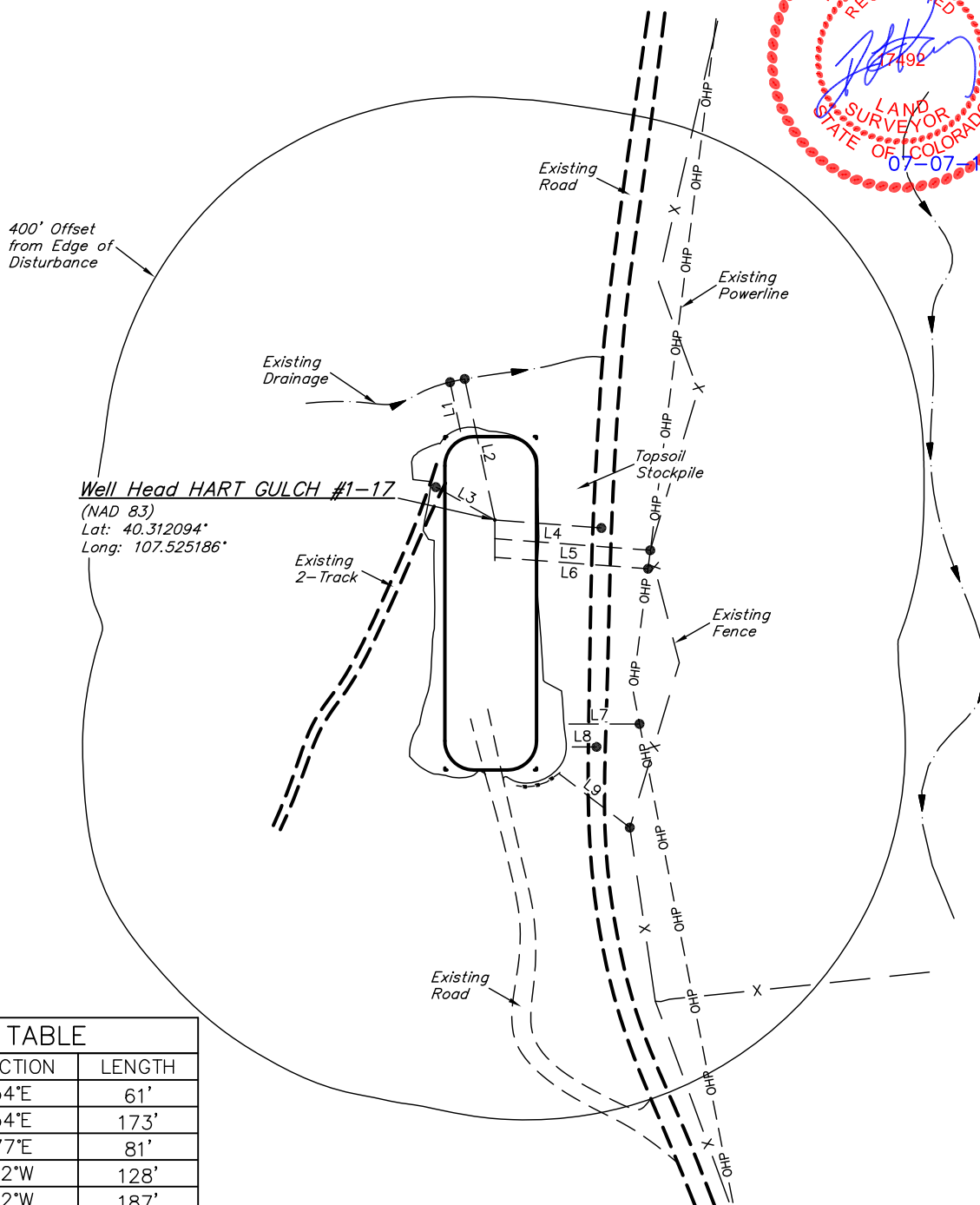
NAD 83 (TARGET BOTTOM HOLE)	NAD 83 (SURFACE LOCATION)
LATITUDE = 40°18'40.07" (40.311131)	LATITUDE = 40°18'43.54" (40.312094)
LONGITUDE = 107°31'45.14" (107.529206)	LONGITUDE = 107°31'30.67" (107.525186)
NAD 27 (TARGET BOTTOM HOLE)	NAD 27 (SURFACE LOCATION)
LATITUDE = 40°18'40.16" (40.311156)	LATITUDE = 40°18'43.63" (40.312119)
LONGITUDE = 107°31'42.91" (107.528586)	LONGITUDE = 107°31'28.44" (107.524567)

SCALE 1" = 1000'	DATE SURVEYED: 06-24-11	DATE DRAWN: 06-30-11
PARTY B.H. J.C. J.I.	REFERENCES G.L.O. PLAT	
WEATHER WARM	FILE SWEPI LP	



SWEPI LP
ADDENDUM TO LEGAL PLAT FOR
HART GULCH #1-17
SECTION 17, T4N, R90W, 6th. P.M.
1577' FSL 1614' FEL

SCALE: 1" = 200'
DATE: 06-30-11
DRAWN BY: J.I.



LINE TABLE		
LINE	DIRECTION	LENGTH
L1	S54°E	61'
L2	S54°E	173'
L3	N77°E	81'
L4	S52°W	128'
L5	S52°W	187'
L6	S52°W	184'
L7	S48°W	85'
L8	S48°W	29'
L9	S85°W	107'