

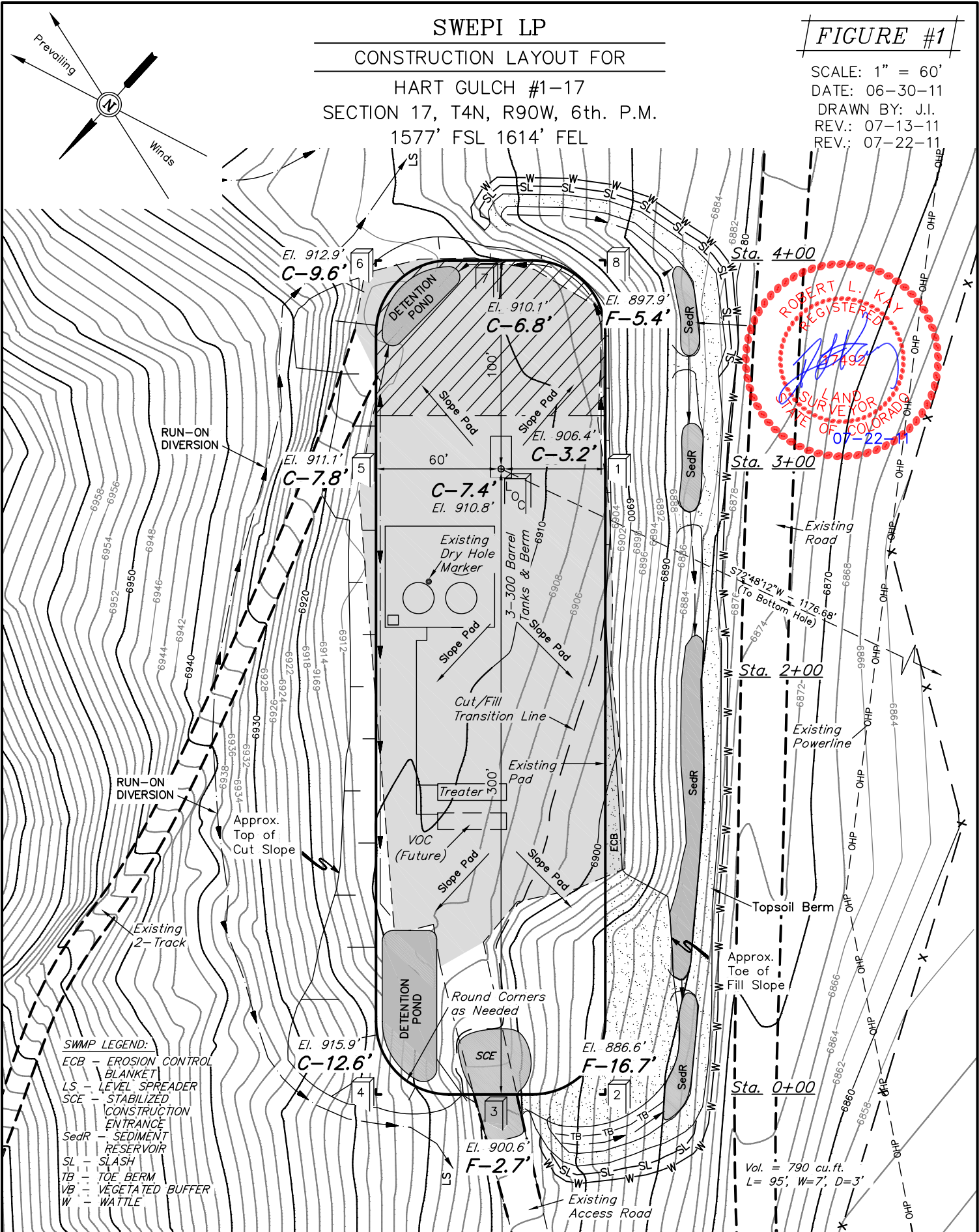
SWEPI LP

CONSTRUCTION LAYOUT FOR

HART GULCH #1-17
SECTION 17, T4N, R90W, 6th. P.M.
1577' FSL 1614' FEL

FIGURE #1

SCALE: 1" = 60'
DATE: 06-30-11
DRAWN BY: J.I.
REV.: 07-13-11
REV.: 07-22-11



SWMP LEGEND:
ECB - EROSION CONTROL BLANKET
LS - LEVEL SPREADER
SCE - STABILIZED CONSTRUCTION ENTRANCE
SedR - SEDIMENT RESERVOIR
SL - SLASH
TB - TOE BERM
VB - VEGETATED BUFFER
W - WATTLE

Elev. Ungraded Ground At Loc. Stake = 6910.8'
FINISHED GRADE ELEV. AT LOC. STAKE = 6903.3'

UINTAH ENGINEERING & LAND SURVEYING
85 So. 200 East * Vernal, Utah 84078 * (435) 789-1017

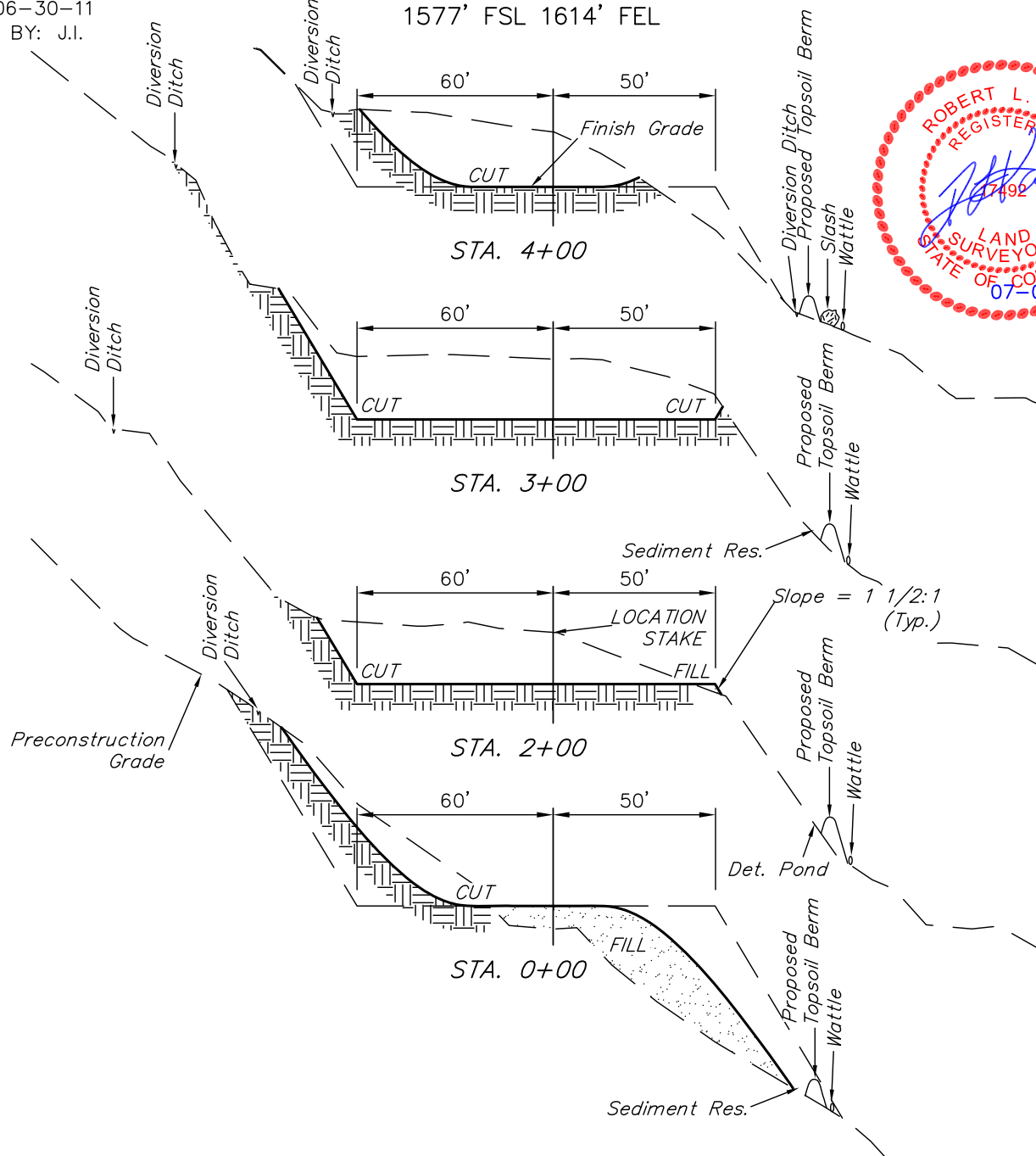
FIGURE #2

X-Section
Scale

$$1'' = 50'$$

DATE: 06-30-11

DRAWN BY: J.I.



APPROXIMATE ACREAGES

WELL SITE DISTURBANCE = ± 1.418 ACRES

ACCESS ROAD DISTURBANCE = ± 2.752 ACRES

TOTAL = ± 4.170 ACRES

* NOTE:
FILL QUANTITY INCLUDES
5% FOR COMPACTION

EXCESS MATERIAL = 7,040 Cu. Yds.

Topsoil = 1,130 Cu. Yds.

(6") Topsoil Stripping	=	1,130 Cu. Yds.
Remaining Location	=	8,700 Cu. Yds.
TOTAL CUT	=	9,830 CU.YDS.
FILL	=	2,790 CU.YDS.

EXCESS UNBALANCE = 5,910 Cu. Yds.
(After Interim Rehabilitation)

UINTAH ENGINEERING & LAND SURVEYING

85 So. 200 East * Vernal, Utah 84078 * (435) 789-1017