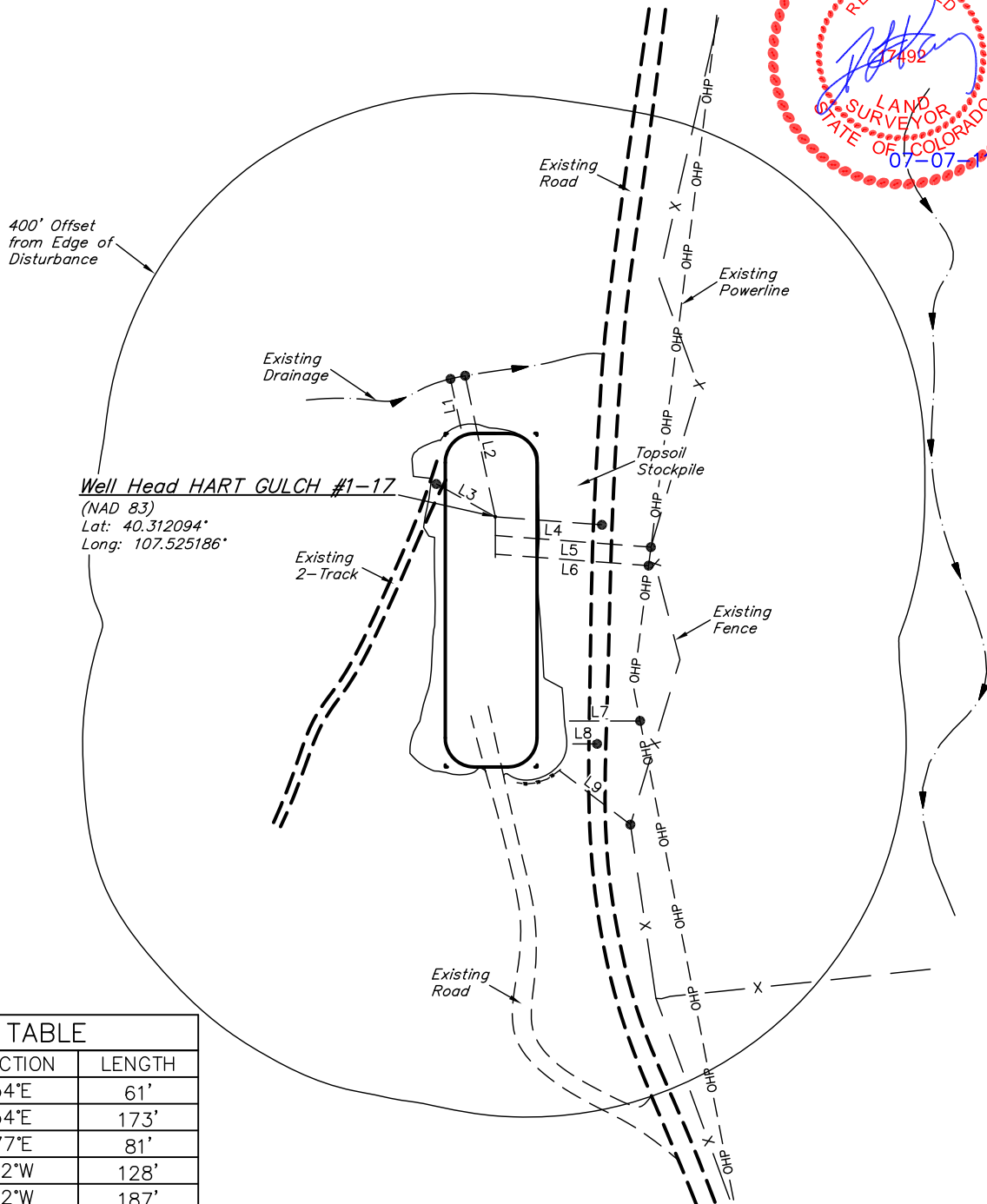


SWEPI LP
ADDENDUM TO LEGAL PLAT FOR
HART GULCH #1-17
SECTION 17, T4N, R90W, 6th. P.M.
1577' FSL 1614' FEL

SCALE: 1" = 200'
DATE: 06-30-11
DRAWN BY: J.I.



LINE TABLE		
LINE	DIRECTION	LENGTH
L1	S54°E	61'
L2	S54°E	173'
L3	N77°E	81'
L4	S52°W	128'
L5	S52°W	187'
L6	S52°W	184'
L7	S48°W	85'
L8	S48°W	29'
L9	S85°W	107'

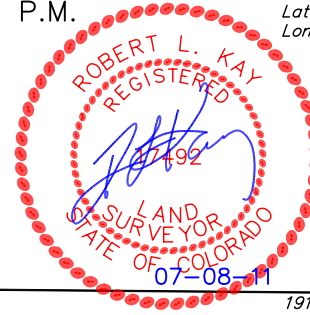
SWEPI LP

LOCATION DRAWING FOR

HART GULCH #1-17
SECTION 17, T4N, R90W, 6th. P.M.
1577' FSL 1614' FEL

FIGURE #5

NE Cor. Sec. 17
1914 Brass Cap,
2.0' High
Lat: 40.322303°
Long: 107.519308°



1914 Brass Cap,
0.6' High, Pile
of Stones
Lat: 40.315014°
Long: 107.519381°



SCALE
DATE: 06-30-11
DRAWN BY: J.I.

Reserve Coal
Properties Co.

Building

Surface
Water

Power Line

LINE TABLE

LINE	FEATURE	DIRECTION	LENGTH
L1	SURFACE WATER	S79°W	598'
L2	POWER LINE	S55°W	190'

SW Cor. Sec. 17
1914 Brass Cap,
0.5' High
Lat: 40.307864°
Long: 107.538703°

1914 Brass Cap,
1.2' High
Lat: 40.307828°
Long: 107.529317°

1914 Brass Cap,
1.5' High, Pile
of Stones
Lat: 40.307681°
Long: 107.519428°

N89°42'33"W
2618.74' (Meas.)

Section Line
N88°52'06"W - 2759.06' (Meas.)

N00°25'53"E
2656.19' (Meas.)

N00°17'14"E - 2673.21' (Meas.)

PLANT COMMUNITY

- ☐ DISTURBED GRASSLAND
- ☐ NATIVE GRASSLAND
- ☐ SHRUB LAND
- ☐ PLAINS RIPARIAN
- ☐ MOUNTAIN RIPARIAN
- ☐ FOREST LAND
- ☐ WETLANDS AQUATIC
- ☐ ALPINE
- ☐ OTHER (Describe): _____

CURRENT LAND USE

- CROP LAND: ☐ IRRIGATED ☐ DRY LAND ☐ IMPROVED PASTURE ☐ HAY MEADOW ☐ CRP
NON-CROP LAND: ☐ RANGELAND ☐ TIMBER ☐ RECREATIONAL ☐ OTHER (Describe) _____
SUBDIVIDED: ☐ INDUSTRIAL ☐ COMMERCIAL ☐ RESIDENTIAL _____

FUTURE LAND USE

- CROP LAND: ☐ IRRIGATED ☐ DRY LAND ☐ IMPROVED PASTURE ☐ HAY MEADOW ☐ CRP
NON-CROP LAND: ☐ RANGELAND ☐ TIMBER ☐ RECREATIONAL ☐ OTHER (Describe) _____
SUBDIVIDED: ☐ INDUSTRIAL ☐ COMMERCIAL ☐ RESIDENTIAL _____