

T6N, R92W, 6th. P.M.

QUICKSILVER RESOURCES, INC.

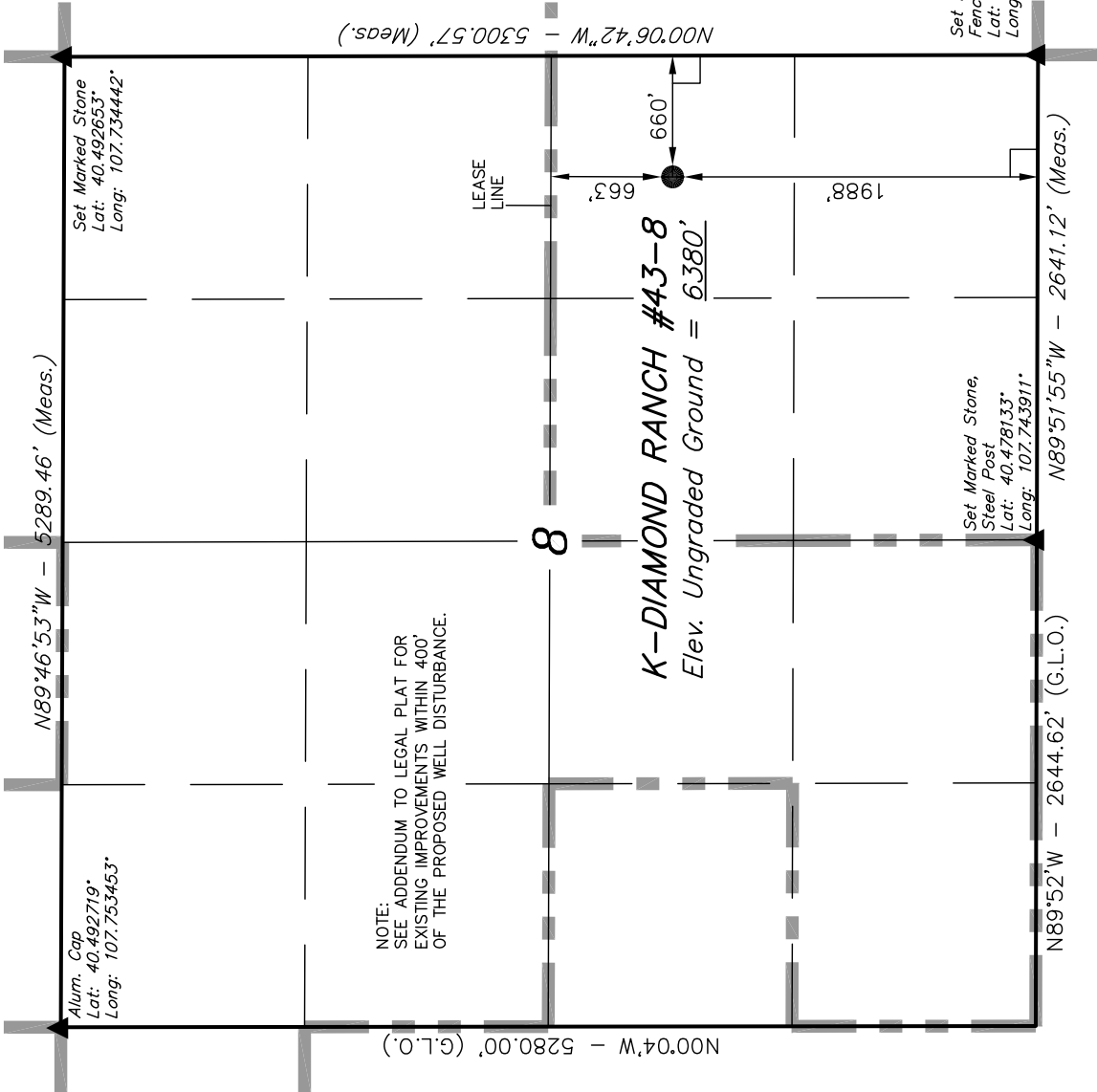
Well location, K-DIAMOND RANCH #43-8, located as shown in the NE 1/4 SE 1/4 of Section 8, T6N, R92W, 6th. P.M., Moffat County, Colorado.

BASIS OF ELEVATION

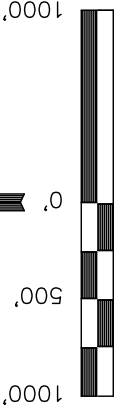
SPOT ELEVATION LOCATED AT THE NORTHEAST CORNER OF SECTION 10, T6N, R93W, 6th. P.M., TAKEN FROM THE HORSE GULCH QUADRANGLE, COLORADO, MOFFAT COUNTY, 7.5 MINUTE QUAD. (TOPOGRAPHIC MAP) PUBLISHED BY THE UNITED STATES DEPARTMENT OF THE INTERIOR, GEOLOGICAL SURVEY. SAID ELEVATION IS MARKED AS BEING 6246 FEET.

BASIS OF BEARINGS

BASIS OF BEARINGS IS A G.P.S. OBSERVATION.



NOTE:  
SEE ADDENDUM TO LEGAL PLAT FOR  
EXISTING IMPROVEMENTS WITHIN 400'  
OF THE PROPOSED WELL DISTURBANCE.



S C A L E

CERTIFICATE

THIS IS TO CERTIFY THAT THE ABOVE PLAT WAS PREPARED, FROM FIELD NOTES OF ACTUAL SURVEYS MADE BY ME OR UNDER MY SUPERVISION AND THAT THE SAME ARE TRUE AND CORRECT TO THE BEST OF MY KNOWLEDGE AND BELIEF.

Set Marked Stone,  
Fence Corner, Rebar  
Lat: 40.478108°  
Long: 107.734422°

Set Marked Stone,  
Steel Post  
Lat: 40.478133°  
Long: 107.743911°

N89°52'W - 2644.62' (G.L.O.)

N89°51'55\"W - 2641.12' (Meas.)

N00°06'42\"W - 5300.57' (Meas.)

N00°04'W - 5280.00' (G.L.O.)

660'

663'

1080'

LEASE LINE

8

K-DIAMOND RANCH #43-8

Elev. Ungraded Ground = 6380'

Set Marked Stone,  
Fence Corner, Rebar  
Lat: 40.478108°  
Long: 107.734422°

Set Marked Stone,  
Steel Post  
Lat: 40.478133°  
Long: 107.743911°

N89°52'W - 2644.62' (G.L.O.)

N89°51'55\"W - 2641.12' (Meas.)

N00°06'42\"W - 5300.57' (Meas.)

N00°04'W - 5280.00' (G.L.O.)

660'

663'

1080'

LEASE LINE

8

K-DIAMOND RANCH #43-8

Elev. Ungraded Ground = 6380'

Set Marked Stone,  
Fence Corner, Rebar  
Lat: 40.478108°  
Long: 107.734422°

Set Marked Stone,  
Steel Post  
Lat: 40.478133°  
Long: 107.743911°

N89°52'W - 2644.62' (G.L.O.)

N89°51'55\"W - 2641.12' (Meas.)

N00°06'42\"W - 5300.57' (Meas.)

N00°04'W - 5280.00' (G.L.O.)

660'

663'

1080'

LEASE LINE

8

K-DIAMOND RANCH #43-8

Elev. Ungraded Ground = 6380'

Set Marked Stone,  
Fence Corner, Rebar  
Lat: 40.478108°  
Long: 107.734422°

Set Marked Stone,  
Steel Post  
Lat: 40.478133°  
Long: 107.743911°

N89°52'W - 2644.62' (G.L.O.)

N89°51'55\"W - 2641.12' (Meas.)

N00°06'42\"W - 5300.57' (Meas.)

N00°04'W - 5280.00' (G.L.O.)

660'

663'

1080'

LEASE LINE

8

K-DIAMOND RANCH #43-8

Elev. Ungraded Ground = 6380'

Set Marked Stone,  
Fence Corner, Rebar  
Lat: 40.478108°  
Long: 107.734422°

Set Marked Stone,  
Steel Post  
Lat: 40.478133°  
Long: 107.743911°

N89°52'W - 2644.62' (G.L.O.)

N89°51'55\"W - 2641.12' (Meas.)

N00°06'42\"W - 5300.57' (Meas.)

N00°04'W - 5280.00' (G.L.O.)

660'

663'

1080'

LEASE LINE

8

K-DIAMOND RANCH #43-8

Elev. Ungraded Ground = 6380'

Set Marked Stone,  
Fence Corner, Rebar  
Lat: 40.478108°  
Long: 107.734422°

Set Marked Stone,  
Steel Post  
Lat: 40.478133°  
Long: 107.743911°

N89°52'W - 2644.62' (G.L.O.)

N89°51'55\"W - 2641.12' (Meas.)

N00°06'42\"W - 5300.57' (Meas.)

N00°04'W - 5280.00' (G.L.O.)

660'

663'

1080'

LEASE LINE

8

K-DIAMOND RANCH #43-8

Elev. Ungraded Ground = 6380'

Set Marked Stone,  
Fence Corner, Rebar  
Lat: 40.478108°  
Long: 107.734422°

Set Marked Stone,  
Steel Post  
Lat: 40.478133°  
Long: 107.743911°

N89°52'W - 2644.62' (G.L.O.)

N89°51'55\"W - 2641.12' (Meas.)

N00°06'42\"W - 5300.57' (Meas.)

N00°04'W - 5280.00' (G.L.O.)

660'

663'

1080'

LEASE LINE

8

K-DIAMOND RANCH #43-8

Elev. Ungraded Ground = 6380'

Set Marked Stone,  
Fence Corner, Rebar  
Lat: 40.478108°  
Long: 107.734422°

Set Marked Stone,  
Steel Post  
Lat: 40.478133°  
Long: 107.743911°

N89°52'W - 2644.62' (G.L.O.)

N89°51'55\"W - 2641.12' (Meas.)

N00°06'42\"W - 5300.57' (Meas.)

N00°04'W - 5280.00' (G.L.O.)

660'

663'

1080'

LEASE LINE

8

K-DIAMOND RANCH #43-8

Elev. Ungraded Ground = 6380'

Set Marked Stone,  
Fence Corner, Rebar  
Lat: 40.478108°  
Long: 107.734422°

Set Marked Stone,  
Steel Post  
Lat: 40.478133°  
Long: 107.743911°

N89°52'W - 2644.62' (G.L.O.)

N89°51'55\"W - 2641.12' (Meas.)

N00°06'42\"W - 5300.57' (Meas.)

N00°04'W - 5280.00' (G.L.O.)

660'

663'

1080'

LEASE LINE

8

K-DIAMOND RANCH #43-8

Elev. Ungraded Ground = 6380'

Set Marked Stone,  
Fence Corner, Rebar  
Lat: 40.478108°  
Long: 107.734422°

Set Marked Stone,  
Steel Post  
Lat: 40.478133°  
Long: 107.743911°

N89°52'W - 2644.62' (G.L.O.)

N89°51'55\"W - 2641.12' (Meas.)

N00°06'42\"W - 5300.57' (Meas.)

N00°04'W - 5280.00' (G.L.O.)

660'

663'

1080'

LEASE LINE

8

K-DIAMOND RANCH #43-8

Elev. Ungraded Ground = 6380'

Set Marked Stone,  
Fence Corner, Rebar  
Lat: 40.478108°  
Long: 107.734422°

Set Marked Stone,  
Steel Post  
Lat: 40.478133°  
Long: 107.743911°

N89°52'W - 2644.62' (G.L.O.)

N89°51'55\"W - 2641.12' (Meas.)

N00°06'42\"W - 5300.57' (Meas.)

N00°04'W - 5280.00' (G.L.O.)

660'

663'

1080'

LEASE LINE

8

K-DIAMOND RANCH #43-8

Elev. Ungraded Ground = 6380'

Set Marked Stone,  
Fence Corner, Rebar  
Lat: 40.478108°  
Long: 107.734422°

Set Marked Stone,  
Steel Post  
Lat: 40.478133°  
Long: 107.743911°

N89°52'W - 2644.62' (G.L.O.)

N89°51'55\"W - 2641.12' (Meas.)

N00°06'42\"W - 5300.57' (Meas.)

N00°04'W - 5280.00' (G.L.O.)

660'

663'

1080'

LEASE LINE

8

K-DIAMOND RANCH #43-8

Elev. Ungraded Ground = 6380'

Set Marked Stone,  
Fence Corner, Rebar  
Lat: 40.478108°  
Long: 107.734422°

Set Marked Stone,  
Steel Post  
Lat: 40.478133°  
Long: 107.743911°

N89°52'W - 2644.62' (G.L.O.)

N89°51'55\"W - 2641.12' (Meas.)

N00°06'42\"W - 5300.57' (Meas.)

N00°04'W - 5280.00' (G.L.O.)

660'

663'

1080'

LEASE LINE

8

K-DIAMOND RANCH #43-8

Elev. Ungraded Ground = 6380'

Set Marked Stone,  
Fence Corner, Rebar  
Lat: 40.478108°  
Long: 107.734422°

Set Marked Stone,  
Steel Post  
Lat: 40.478133°  
Long: 107.743911°

N89°52'W - 2644.62' (G.L.O.)

N89°51'55\"W - 2641.12' (Meas.)

N00°06'42\"W - 5300.57' (Meas.)

N00°04'W - 5280.00' (G.L.O.)

660'

663'

1080'

LEASE LINE

8

K-DIAMOND RANCH #43-8

Elev. Ungraded Ground = 6380'

Set Marked Stone,  
Fence Corner, Rebar  
Lat: 40.478108°  
Long: 107.734422°

Set Marked Stone,  
Steel Post  
Lat: 40.478133°  
Long: 107.743911°

N89°52'W - 2644.62' (G.L.O.)

N89°51'55\"W - 2641.12' (Meas.)

N00°06'42\"W - 5300.57' (Meas.)

N00°04'W - 5280.00' (G.L.O.)

660'

663'

1080'

LEASE LINE

8

K-DIAMOND RANCH #43-8

Elev. Ungraded Ground = 6380'

Set Marked Stone,  
Fence Corner, Rebar  
Lat: 40.478108°  
Long: 107.734422°

Set Marked Stone,  
Steel Post  
Lat: 40.478133°  
Long: 107.743911°

N89°52'W - 2644.62' (G.L.O.)

N89°51'55\"W - 2641.12' (Meas.)

N00°06'42\"W - 5300.57' (Meas.)

N00°04'W - 5280.00' (G.L.O.)

660'

663'

1080'

LEASE LINE

8

K-DIAMOND RANCH #43-8

Elev. Ungraded Ground = 6380'

Set Marked Stone,  
Fence Corner, Rebar  
Lat: 40.478108°  
Long: 107.734422°

Set Marked Stone,  
Steel Post  
Lat: 40.478133°  
Long: 107.743911°

N89°52'W - 2644.62' (G.L.O.)

N89°51'55\"W - 2641.12' (Meas.)

N00°06'42\"W - 5300.57' (Meas.)

N00°04'W - 5280.00' (G.L.O.)

660'

663'

1080'

LEASE LINE

8

K-DIAMOND RANCH #43-8

Elev. Ungraded Ground = 6380'

Set Marked Stone,  
Fence Corner, Rebar  
Lat: 40.478108°  
Long: 107.734422°

Set Marked Stone,  
Steel Post  
Lat: 40.478133°  
Long: 107.743911°

N89°52'W - 2644.62' (G.L.O.)

N89°51'55\"W - 2641.12' (Meas.)

N00°06'42\"W - 5300.57' (Meas.)

N00°04'W - 5280.00' (G.L.O.)

660'

663'

1080'

LEASE LINE

8