

QUICKSILVER RESOURCES, INC.

TYPICAL RIG LAYOUT FOR
K-DIAMOND RANCH #43-8
SECTION 8, T6N, R92W, 6th. P.M.
1988' FSL 660' FEL

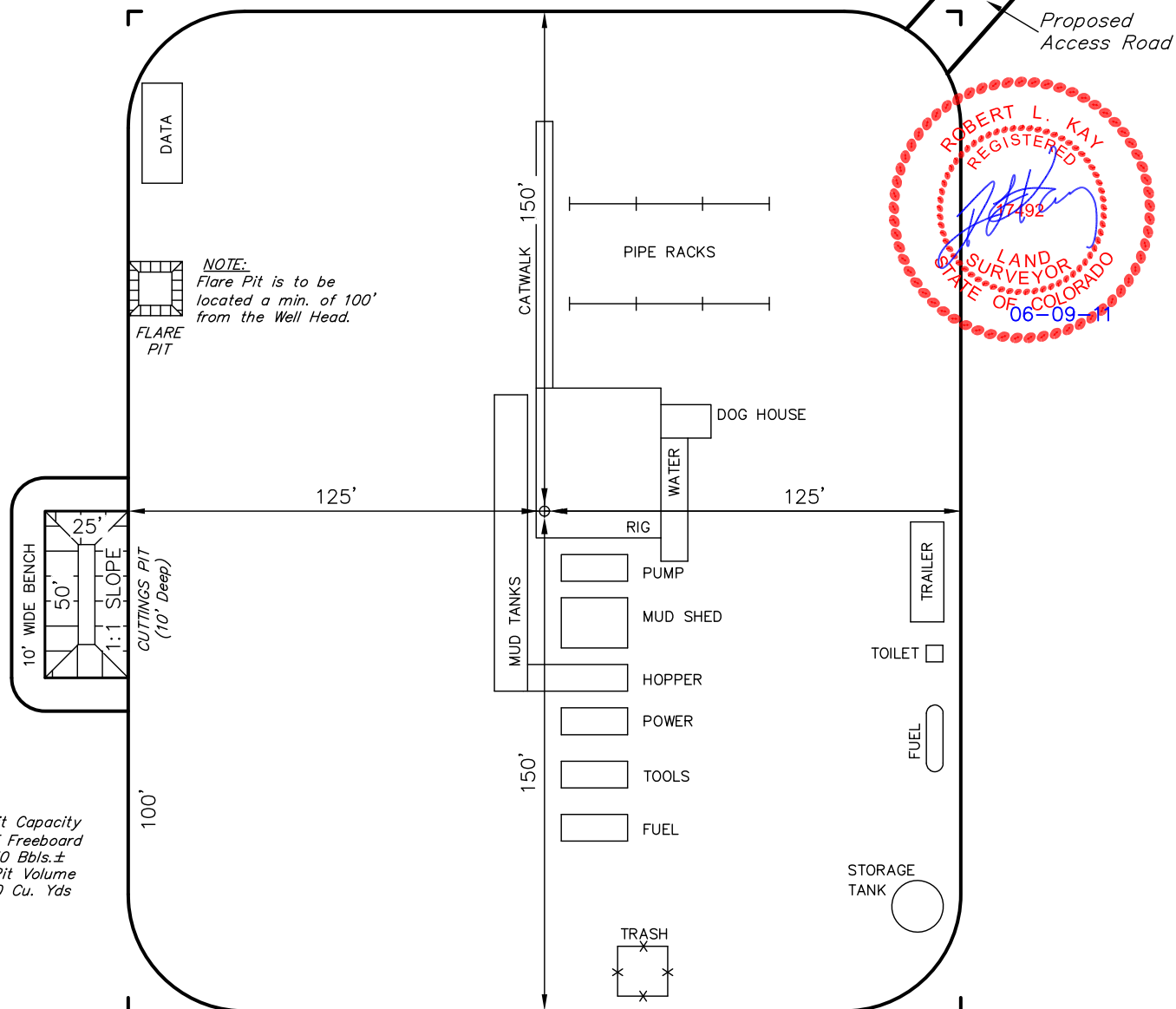
FIGURE #3

SCALE: 1" = 50'

DATE: 05-10-11

DRAWN BY: J.I.

REV.: 06-09-11 M.D.



Total Pit Capacity
W/2' of Freeboard
= 730 Bbls.±
Total Pit Volume
= 230 Cu. Yds

QUICKSILVER RESOURCES, INC.

RECLAMATION DIAGRAM FOR

K-DIAMOND RANCH #43-8
SECTION 8, T6N, R92W, 6th. P.M.
1988' FSL 660' FEL

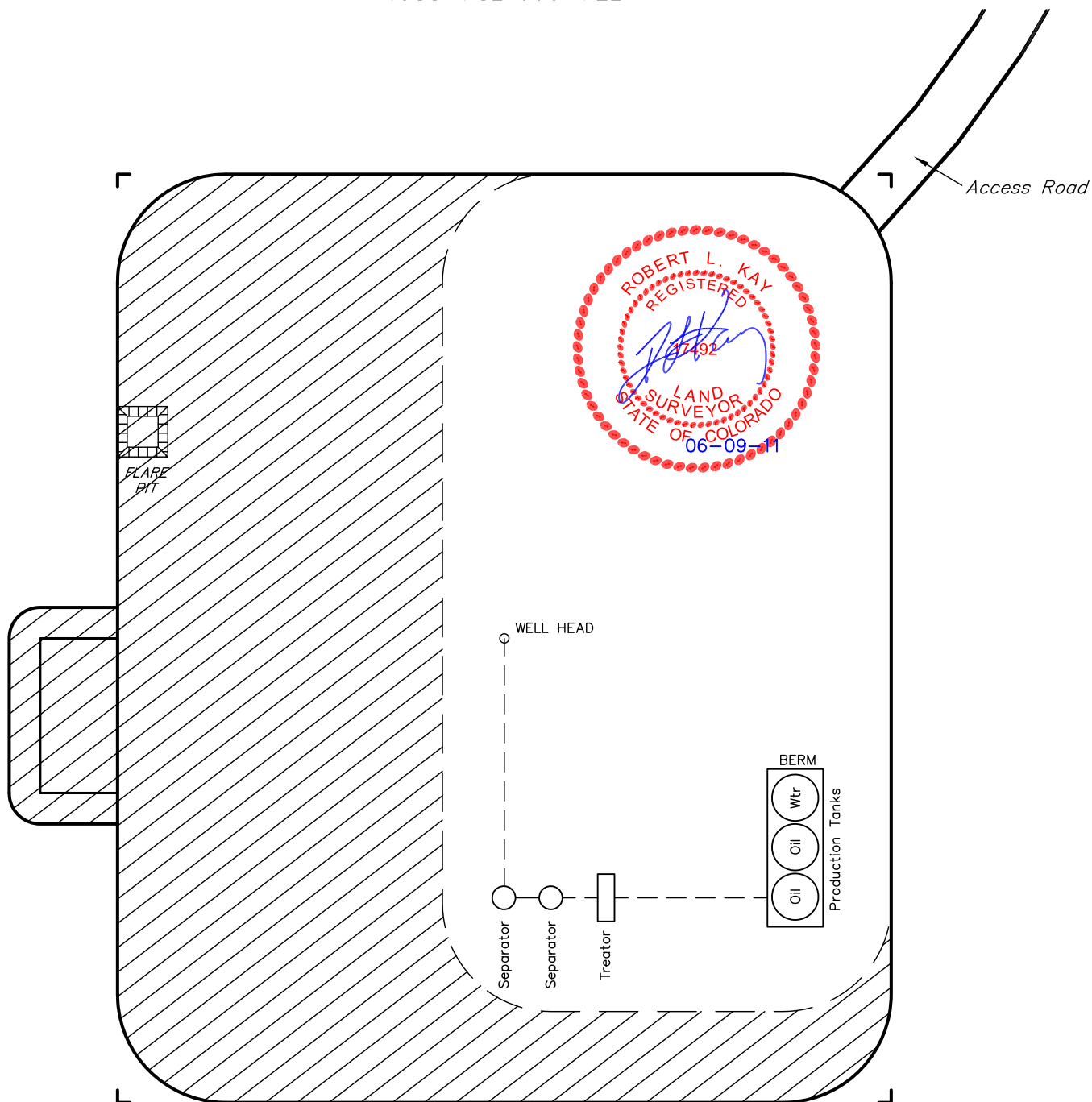
FIGURE #4

SCALE: 1" = 50'

DATE: 05-10-11

DRAWN BY: J.I.

REV.: 06-09-11 M.D.



APPROXIMATE ACREAGES
UN-RECLAIMED = ± 0.893 ACRES



RECLAIMED AREA

UINTAH ENGINEERING & LAND SURVEYING

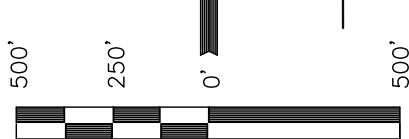
85 So. 200 East * Vernal, Utah 84078 * (435) 789-1017

QUICKSILVER RESOURCES, INC.

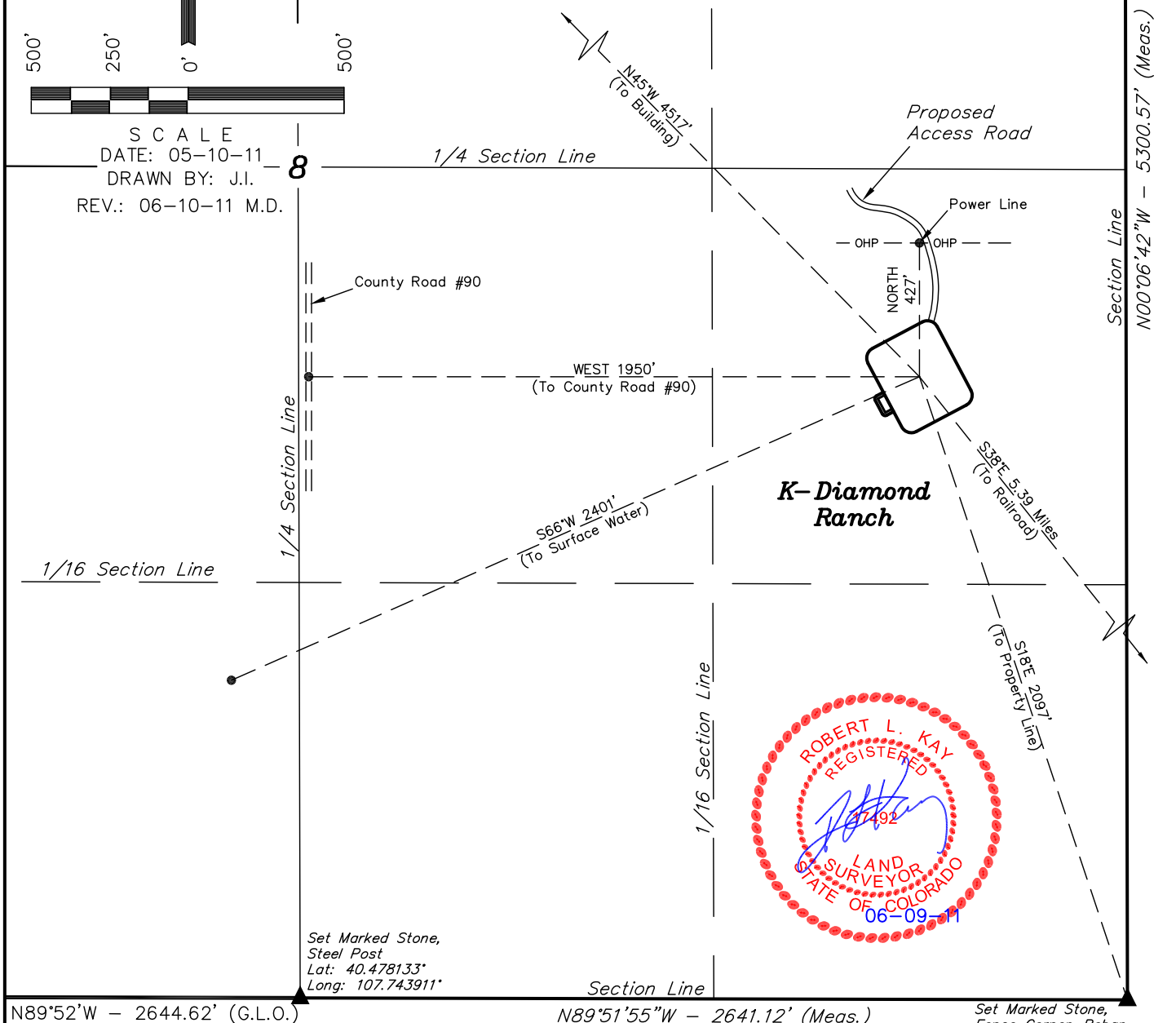
LOCATION DRAWING FOR
K-DIAMOND RANCH #43-8
SECTION 8, T6N, R92W, 6th. P.M.
1988' FSL 660' FEL

FIGURE #5

NE Cor. Sec. 8
Set Marked Stone
Lat: 40.492653°
Long: 107.734442°



SCALE
DATE: 05-10-11
DRAWN BY: J.I.
REV.: 06-10-11 M.D.



PLANT COMMUNITY

- ☐ DISTURBED GRASSLAND
- ☐ NATIVE GRASSLAND
- ☐ SHRUB LAND
- ☐ PLAINS RIPARIAN
- ☐ MOUNTAIN RIPARIAN
- ☐ FOREST LAND
- ☐ WETLANDS AQUATIC
- ☐ ALPINE
- ☐ OTHER (Describe): _____

CURRENT LAND USE

- CROP LAND: ☐ IRRIGATED ☐ DRY LAND ☐ IMPROVED PASTURE ☐ HAY MEADOW ☐ CRP
- NON-CROP LAND: ☐ RANGELAND ☐ TIMBER ☐ RECREATIONAL ☐ OTHER (Describe) _____
- SUBDIVIDED: ☐ INDUSTRIAL ☐ COMMERCIAL ☐ RESIDENTIAL _____

FUTURE LAND USE

- CROP LAND: ☐ IRRIGATED ☐ DRY LAND ☐ IMPROVED PASTURE ☐ HAY MEADOW ☐ CRP
- NON-CROP LAND: ☐ RANGELAND ☐ TIMBER ☐ RECREATIONAL ☐ OTHER (Describe) _____
- SUBDIVIDED: ☐ INDUSTRIAL ☐ COMMERCIAL ☐ RESIDENTIAL _____

UINTAH ENGINEERING & LAND SURVEYING
85 So. 200 East * Vernal, Utah 84078 * (435) 789-1017