

QUICKSILVER RESOURCES, INC.

K-DIAMOND RANCH #43-8

LOCATED IN MOFFAT COUNTY, COLORADO

SECTION 8, T6N, R92W, 6th P.M.

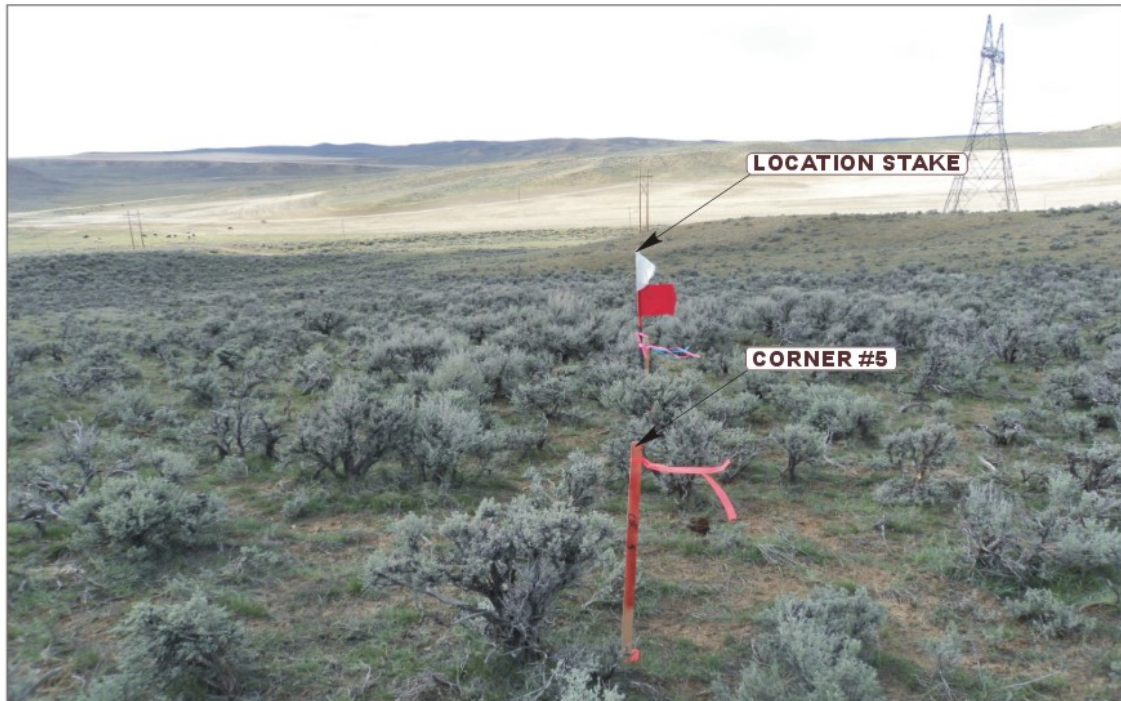


PHOTO: VIEW FROM CORNER #5 TO LOCATION STAKE

CAMERA ANGLE: NORTHWESTERLY



PHOTO: VIEW FROM BEGINNING OF PROPOSED ACCESS

CAMERA ANGLE: SOUTHERLY



- Since 1964 -

**U
E
L
S**

Uintah Engineering & Land Surveying

85 South 200 East Vernal, Utah 84078
435-789-1017 FAX (435) 789-1813

LOCATION PHOTOS

05
MONTH

11
DAY

11
YEAR

PHOTO

P1

TAKEN BY: G.M.

DRAWN BY: S.F.

REVISED: 00-00-00

QUICKSILVER RESOURCES, INC.
K-DIAMOND RANCH #43-8
LOCATED IN MOFFAT COUNTY, COLORADO
SECTION 8, T6N, R92W, 6th P.M.

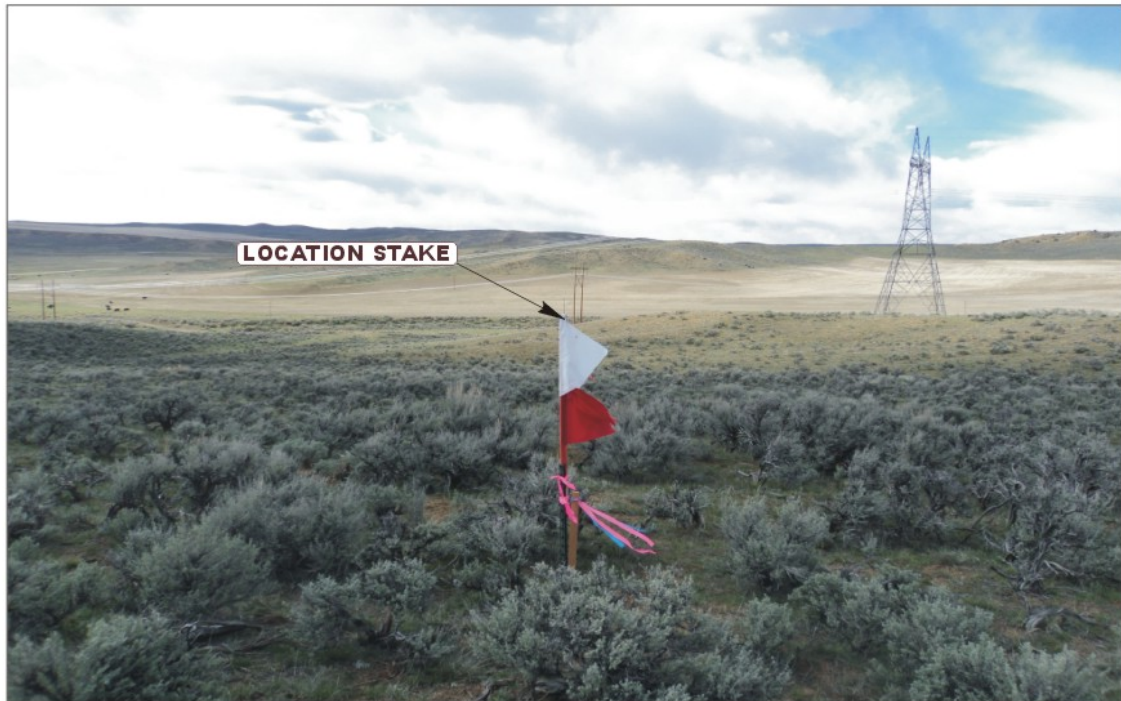


PHOTO: VIEW OF LOCATION STAKE

CAMERA ANGLE: NORTHERLY



PHOTO: VIEW OF LOCATION STAKE

CAMERA ANGLE: EASTERLY



- Since 1964 -

UELS

Uintah Engineering & Land Surveying
85 South 200 East Vernal, Utah 84078
(435) 789-1017 * FAX (435) 789-1813

LOCATION PHOTOS

05
MONTH

11
DAY

11
YEAR

PHOTO

P2

TAKEN BY: G.M.

DRAWN BY: S.F.

REVISED: 00-00-00

QUICKSILVER RESOURCES, INC.

K-DIAMOND RANCH #43-8

LOCATED IN MOFFAT COUNTY, COLORADO

SECTION 8, T6N, R92W, 6th P.M.



PHOTO: VIEW OF LOCATION STAKE

CAMERA ANGLE: SOUTHERLY



PHOTO: VIEW OF LOCATION STAKE

CAMERA ANGLE: WESTERLY



- Since 1964 -

**U
E
L
S**

Uintah Engineering & Land Surveying

85 South 200 East Vernal, Utah 84078
(435) 789-1017 * FAX (435) 789-1813

LOCATION PHOTOS

05
MONTH

11
DAY

11
YEAR

PHOTO

P3

TAKEN BY: G.M.

DRAWN BY: S.F.

REVISED: 00-00-00