

LEGEND:

PROPOSED LOCATION

QUICKSILVER RESOURCES, INC.

K-DIAMOND RANCH #43-8
SECTION 8, T6N, R92W, 6th P.M.
1988' FSL 660' FEL



Uintah Engineering & Land Surveying
 85 South 200 East Vernal, Utah 84078
 (435) 789-1017 * FAX (435) 789-1813

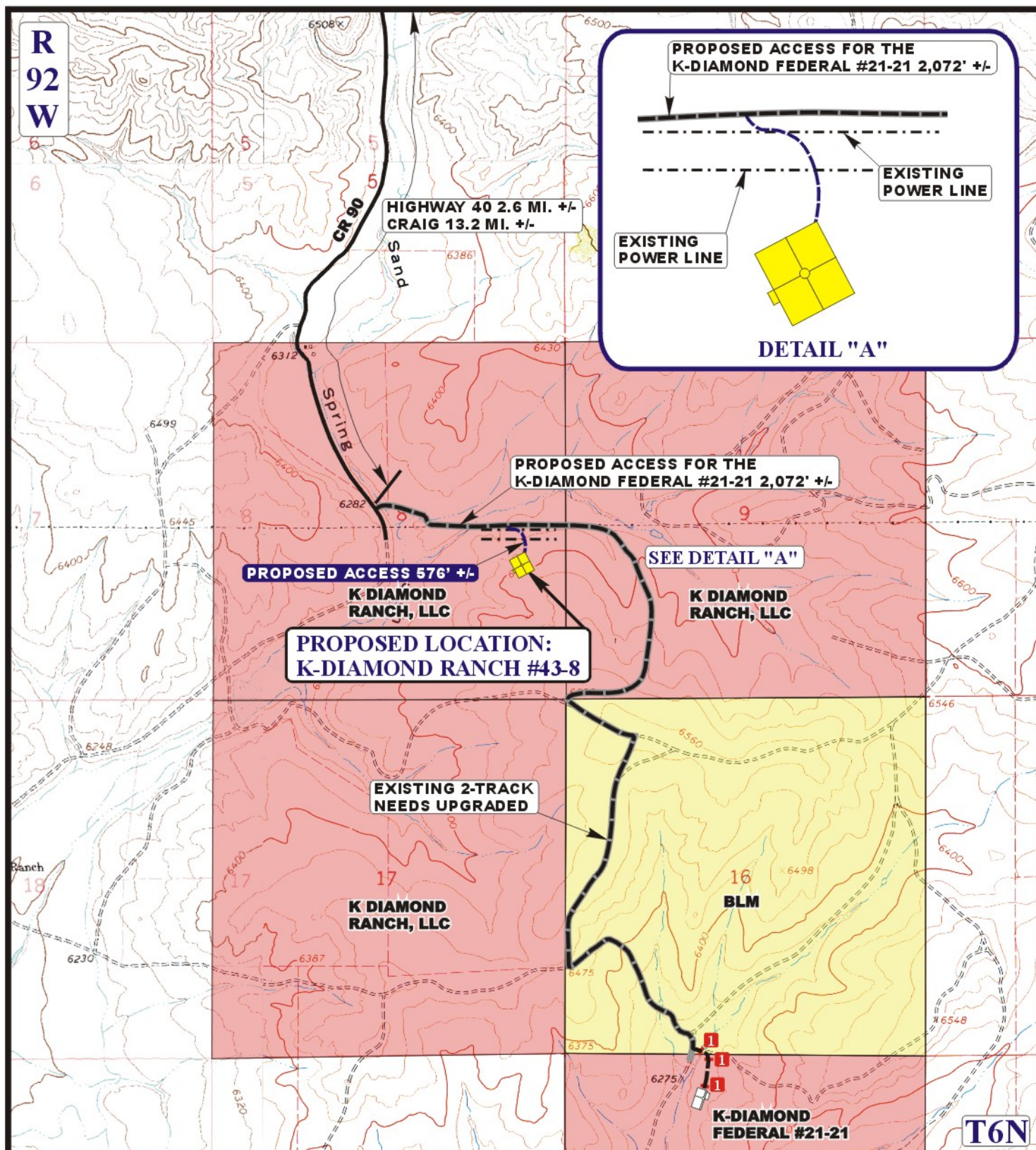


ACCESS ROAD
 MAP

05 11 11
 MONTH DAY YEAR

SCALE: 1:100,000 DRAWN BY: S.F. REVISED: 00-00-00





LEGEND:

	EXISTING ROAD
	PROPOSED ACCESS ROAD
	EXISTING 2-TRACK NEEDS UPGRADED
	EXISTING POWER LINE
	18" CMP REQUIRED



QUICKSILVER RESOURCES, INC.

K-DIAMOND RANCH #43-8
SECTION 8, T6N, R92W, 6th P.M.
1988' FSL 660' FEL



Uintah Engineering & Land Surveying
85 South 200 East Vernal, Utah 84078
(435) 789-1017 * FAX (435) 789-1813

ACCESS ROAD
MAP

05 **11** **11**
MONTH **DAY** **YEAR**

SCALE: 1" = 2000' **DRAWN BY: S.F.** **REV: 05-24-11 Z.L.**

