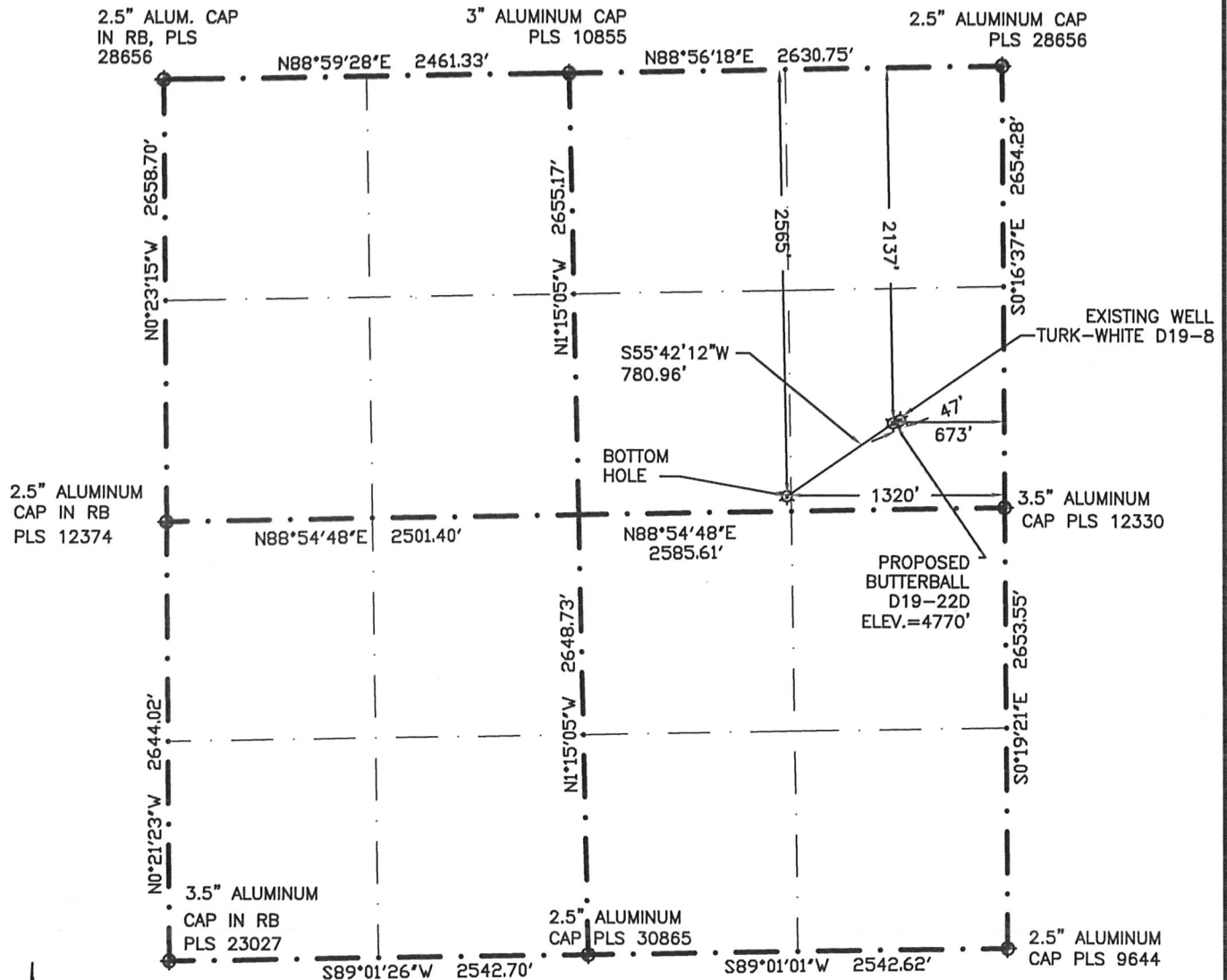


# WELL LOCATION CERTIFICATE

THIS MAP DOES NOT REPRESENT A BOUNDARY SURVEY

SECTION 19  
TOWNSHIP 3N  
RANGE 64W



IN ACCORDANCE WITH A REQUEST BY ERIK VAN DECAR-NOBLE ENERGY INC., BOUNDARY BOYS, LLC. HAS DETERMINED THE LOCATION OF THE BUTTERBALL D19-22D WELL TO BE 2137' FNL, 673' FEL, AS MEASURED AT NINETY (90) DEGREES FROM THE SECTION LINES, AND THE BOTTOM HOLE TO BE 2565' FNL, 1320' FEL, SECTION 19, TOWNSHIP 3 NORTH, RANGE 64 WEST, 6TH PRINCIPLE MERIDIAN, WELD COUNTY, COLORADO

I HEREBY CERTIFY THAT THIS WELL LOCATION CERTIFICATE WAS PREPARED BY ME, OR UNDER MY DIRECT SUPERVISION, THAT THE FIELD WORK WAS COMPLETED ON MARCH 23, 2011 FOR AND ON BEHALF OF NOBLE ENERGY INC., THAT IT IS NOT A LAND SURVEY PLAT OR AN IMPROVEMENT SURVEY PLAT, AND THAT IT IS NOT TO BE RELIED UPON FOR ESTABLISHMENT OF FENCE, BUILDING, OR OTHER FUTURE IMPROVEMENT LINES.

LATITUDE & LONGITUDE (NAD83 SURFACE HOLE)  
LATITUDE: N 40.21218  
LONGITUDE: W 104.58688  
PDOP: 1.7  
QUARTER-QUARTER: SE1/4  
NEAREST PROPERTY LINE: 673' EAST

LATITUDE & LONGITUDE (NAD83 BOTTOM HOLE)  
LATITUDE: N 40.21099  
LONGITUDE: W 104.58921  
QUARTER-QUARTER: SW1/4

0 1000  
SCALE: 1"=1000'

- 1) BASIS OF BEARINGS FOR THIS MAP ARE BASED UPON GPS OBSERVATIONS MADE ON MARCH 23, 2011 BETWEEN MONUMENTS LOCATED AT THE NORTHWEST CORNER AND THE NE CORNER OF SAID SECTION 19 AND WITH ALL OTHER BEARINGS SHOWN HEREON RELATIVE THERETO.
- 2) ELEVATIONS ARE BASED UPON NGS OPUS SOLUTION, NAVD 88 DATUM
- 3) THE NEAREST EXISTING WELL IS TURK WHITE-D19-8, 31' EAST
- 4) SEE VISIBLE IMPROVEMENTS EXHIBIT FOR ALL IMPROVEMENTS WITH 400' IMPROVEMENT BUFFER
- 5) THE LOCATION FALLS IN PASTURE LAND

NOTICE: According to Colorado law you MUST commence any legal action based upon any defect in this W.L.C. within three years after you first discover such defect. In no event may any action based upon any defect in this W.L.C. be commenced more than ten years from this said date of the certification shown hereon.

## LEGEND

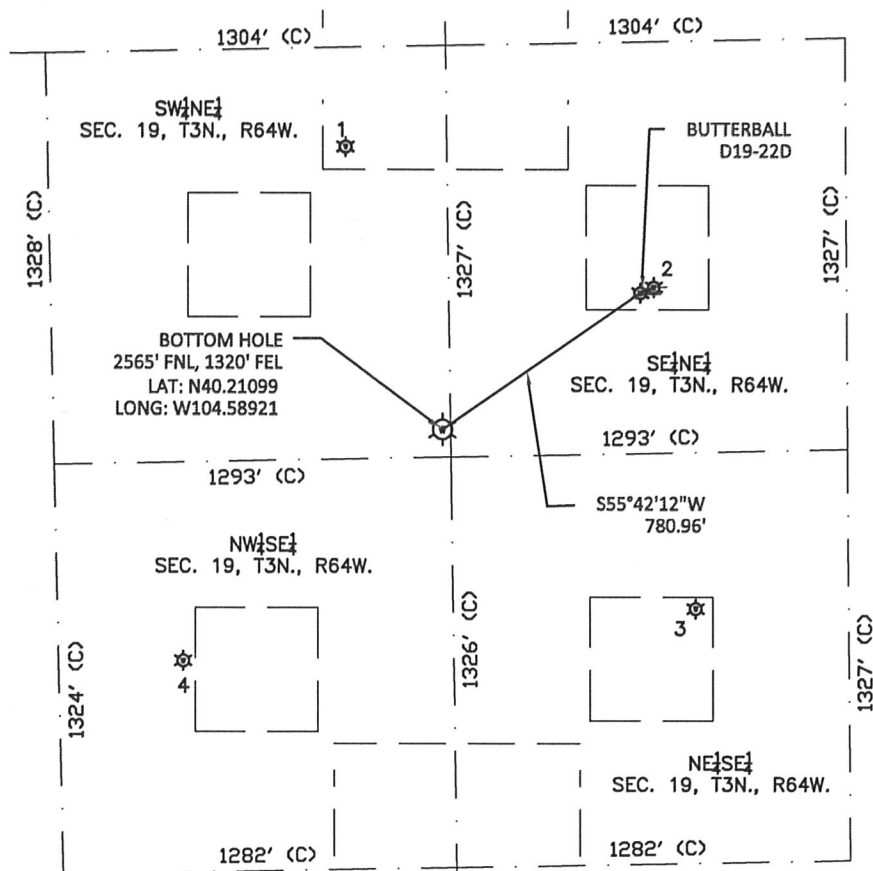
- FOUND SURVEY MONUMENT PER MONUMENT RECORD-EXCEPTIONS NOTED
- (C) CALCULATED
- EXISTING WELL HEAD (UNLESS OTHERWISE NOTED)



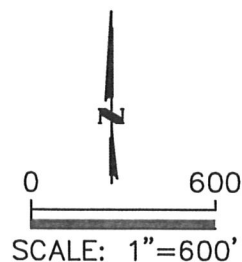
Gregory A. Clark  
Professional Land Surveyor Registration No. 32430  
State of Colorado

Job No. 1N0B0102

SECTION 19  
TOWNSHIP 3N  
RANGE 64W



- | ①                               | ②                               | ③                               | ④                               |
|---------------------------------|---------------------------------|---------------------------------|---------------------------------|
| MILE HIGH 2-19                  | TURK WHITE D19-8                | SEAN D19-9                      | LDS-WHITE-D19-10                |
| SW <del>4</del> NE <del>4</del> | SE <del>4</del> NE <del>4</del> | NE <del>4</del> SE <del>4</del> | NW <del>4</del> SE <del>4</del> |
| 1648' FNL                       | 2120' FNL                       | 2148' FSL                       | 2008' FSL                       |
| 1631' FEL                       | 629' FEL                        | 499' FEL                        | 2169' FEL                       |
| LAT- 40.21349N                  | LAT- 40.21222N                  | LAT- 40.20938N                  | LAT- 40.20896N                  |
| LONG- 104.59030W                | LONG- 104.58673W                | LONG- 104.58628W                | LONG- 104.59226W                |
| PDOP 2.2                        | PDOP 1.7                        | PDOP 1.7                        | PDOP 2.6                        |
| ELEV. 4773'                     | ELEV. 4770'                     | ELEV. 4772'                     | ELEV. 4775'                     |



1) THIS SKETCH DOES NOT REPRESENT A BOUNDARY SURVEY  
2) THE DATUM FOR THE LATITUDES AND LONGITUDES ON THIS SKETCH IS NAD83