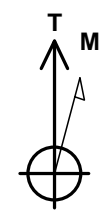
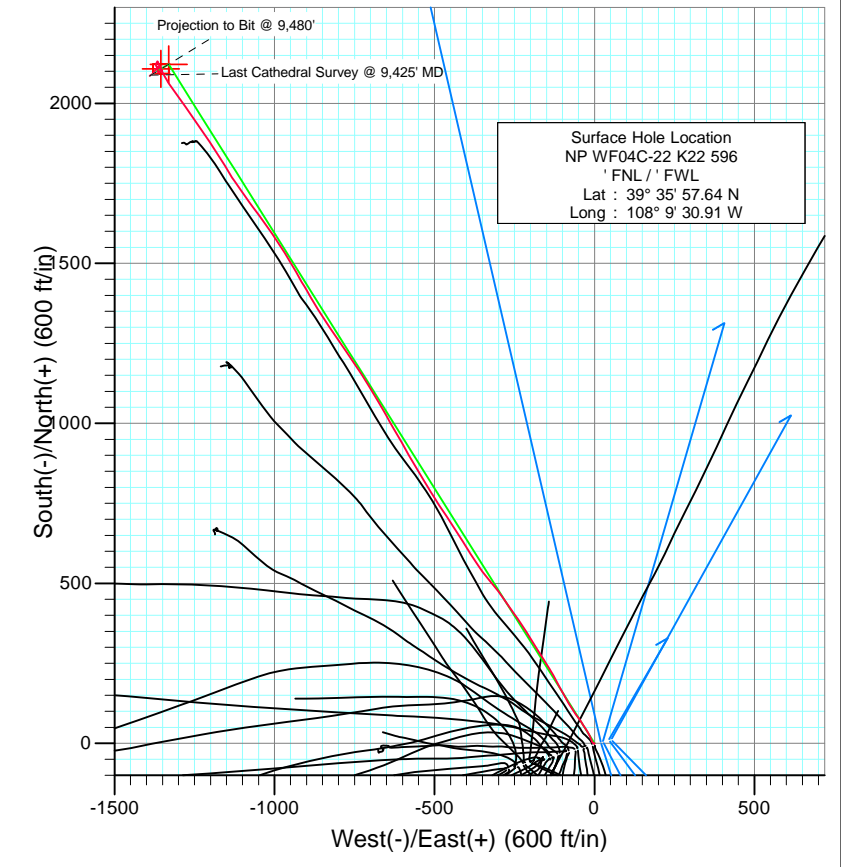
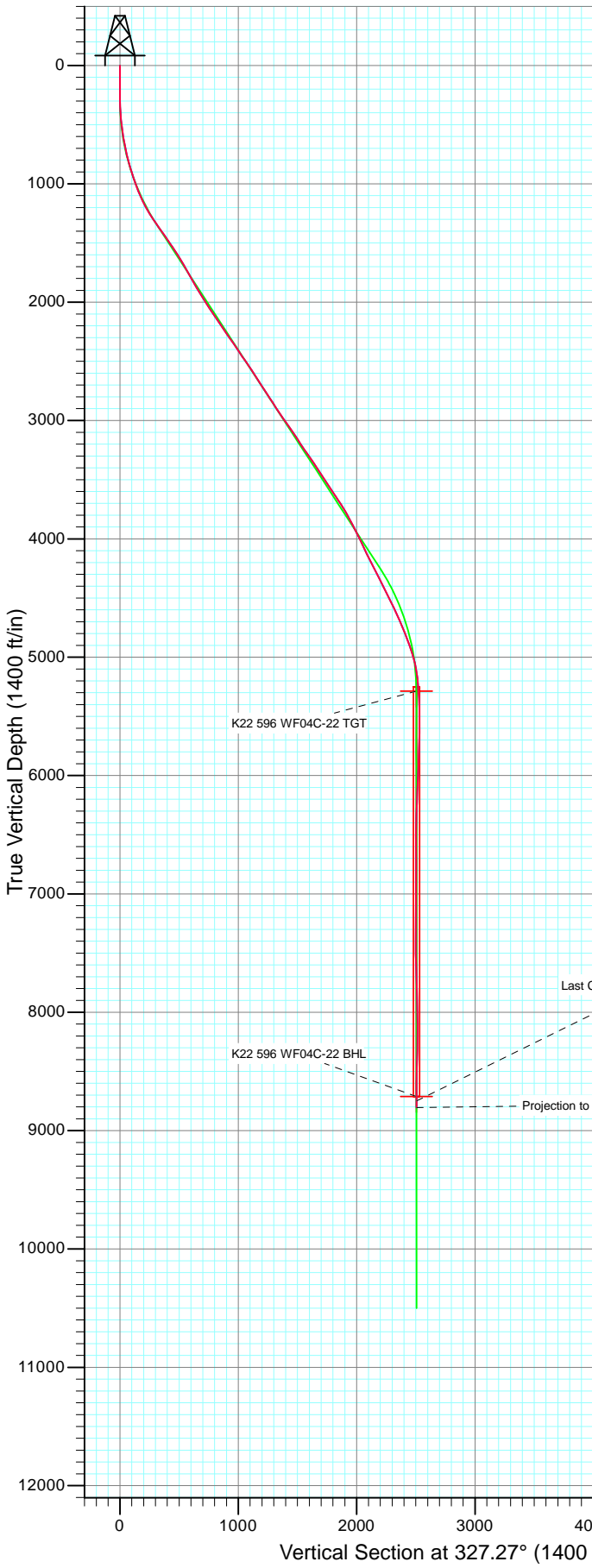




Project: North Piceance  
 Site: K22 596 Pad (S22-T5S-R96W)  
 Well: NP WF04C-22 K22 596  
 Wellbore: DD  
 Design: FINAL

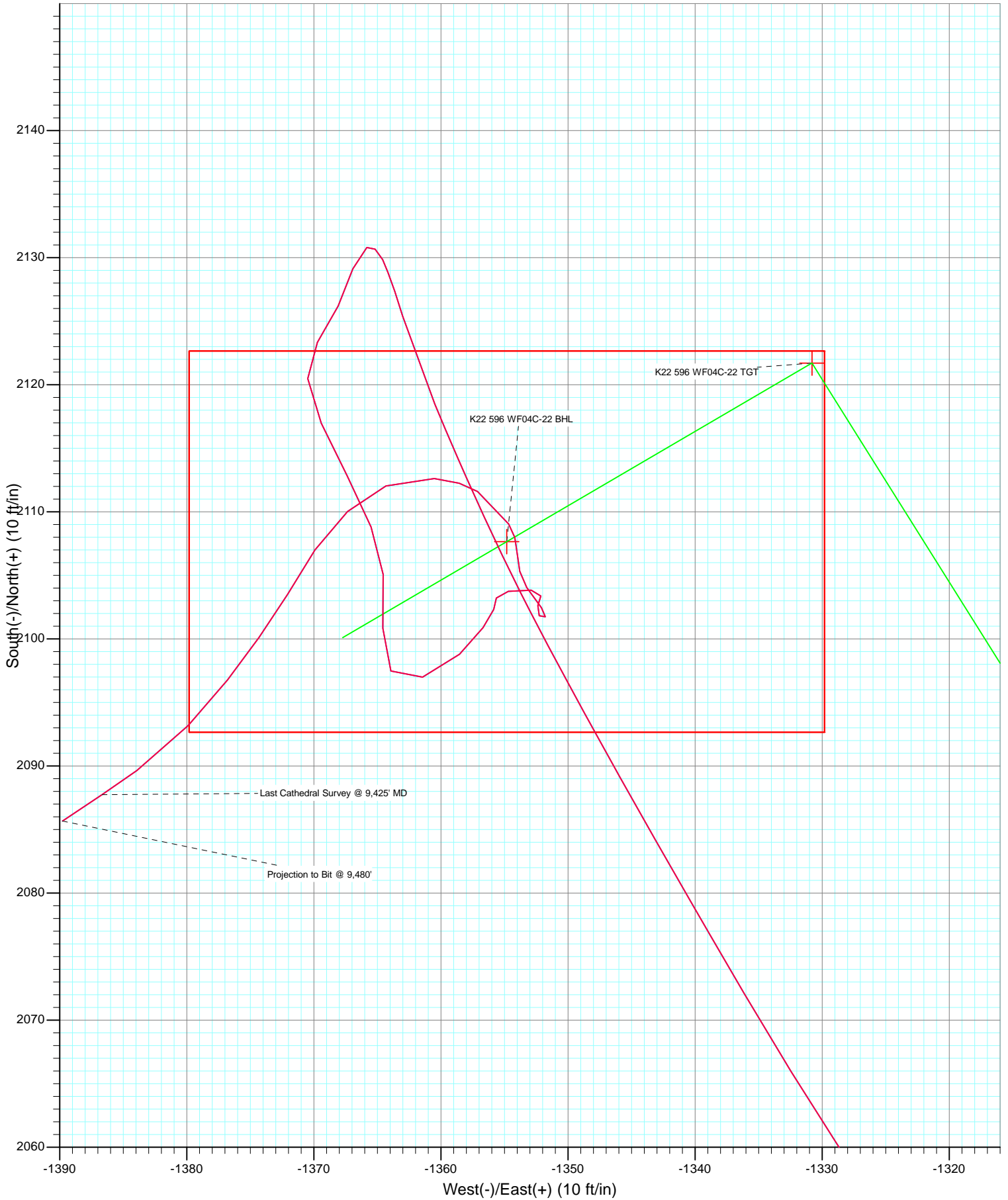


Azimuths to True North  
 Magnetic North: 10.51°  
 Magnetic Field  
 Strength: 52388.6snT  
 Dip Angle: 65.83°  
 Date: 9/8/2010  
 Model: IGRF200510

DD NP WF04C-22 K22 596 105327(SH), 105385 (MH); LR							
Well @ 6549.0ft (Patterson 303) North American Datum 1983 Well NP WF04C-22 K22 596, True North							
Type	Target	Azimuth	Origin	Type	N/S	E/W	From TVD
Target	K22 596 WF04C-22 BHL	327.27	Slot		0.0	0.0	0.0
Name	TVD	+N/-S	+E/-W	Latitude	Longitude		
K22 596 WF04C-22 BHL	8711.0	2107.7	-1354.8	39° 36' 18.47 N	108° 9' 48.22 W		



Project: North Piceance  
Site: K22 596 Pad (S22-T5S-R96W)  
Well: NP WF04C-22 K22 596  
Wellbore: DD  
Design: FINAL



# Cathedral Energy

## Survey Report

<b>Company:</b> EnCana Oil & Gas (USA) Inc	<b>Local Co-ordinate Reference:</b> Well NP WF04C-22 K22 596
<b>Project:</b> North Piceance	<b>TVD Reference:</b> Well @ 6549.0ft (Patterson 303)
<b>Site:</b> K22 596 Pad (S22-T5S-R96W)	<b>MD Reference:</b> Well @ 6549.0ft (Patterson 303)
<b>Well:</b> NP WF04C-22 K22 596	<b>North Reference:</b> True
<b>Wellbore:</b> DD	<b>Survey Calculation Method:</b> Minimum Curvature
<b>Design:</b> DD	<b>Database:</b> EDM 5000.1 US Multi Users DB

<b>Project</b> North Piceance		
<b>Map System:</b> US State Plane 1983	<b>System Datum:</b> Mean Sea Level	
<b>Geo Datum:</b> North American Datum 1983		
<b>Map Zone:</b> Colorado Central Zone		

<b>Site</b> K22 596 Pad (S22-T5S-R96W)					
<b>Site Position:</b>	<b>Northing:</b> 1,654,096.85 ft	<b>Latitude:</b> 39° 35' 57.02 N			
<b>From:</b> Lat/Long	<b>Easting:</b> 2,250,762.90 ft	<b>Longitude:</b> 108° 9' 33.39 W			
<b>Position Uncertainty:</b> 0.0 ft	<b>Slot Radius:</b> 0.000 in	<b>Grid Convergence:</b> -1.68 °			

<b>Well</b> NP WF04C-22 K22 596					
<b>Well Position</b>	<b>+N/-S</b> 0.0 ft	<b>Northing:</b> 1,654,153.94 ft	<b>Latitude:</b> 39° 35' 57.64 N		
	<b>+E/-W</b> 0.0 ft	<b>Easting:</b> 2,250,958.78 ft	<b>Longitude:</b> 108° 9' 30.91 W		
<b>Position Uncertainty</b>	0.0 ft	<b>Wellhead Elevation:</b> ft	<b>Ground Level:</b> 6,524.0 ft		

<b>Wellbore</b> DD					
<b>Magnetics</b>	<b>Model Name</b>	<b>Sample Date</b>	<b>Declination (°)</b>	<b>Dip Angle (°)</b>	<b>Field Strength (nT)</b>
	IGRF200510	9/8/2010	10.51	65.83	52,389

<b>Design</b> DD					
<b>Audit Notes:</b>					
<b>Version:</b> 1.0	<b>Phase:</b> ACTUAL	<b>Tie On Depth:</b> 0.0			
<b>Vertical Section:</b>	<b>Depth From (TVD) (ft)</b>	<b>+N/-S (ft)</b>	<b>+E/-W (ft)</b>	<b>Direction (°)</b>	
	0.0	0.0	0.0	327.27	

<b>Survey Program</b> Date 9/14/2010					
<b>From (ft)</b>	<b>To (ft)</b>	<b>Survey (Wellbore)</b>	<b>Tool Name</b>	<b>Description</b>	
147.0	9,480.0	Survey #1 (DD)	MWD	Geolink MWD	

<b>Survey</b>									
Measured Depth (ft)	Inclination (°)	Azimuth (°)	Vertical Depth (ft)	+N/-S (ft)	+E/-W (ft)	Vertical Section (ft)	Dogleg Rate (°/100ft)	Build Rate (°/100ft)	Formations / Comments
0.0	0.00	0.00	0.0	0.0	0.0	0.0	0.00	0.00	
147.0	0.50	240.80	147.0	-0.3	-0.6	0.0	0.34	0.34	
177.0	0.40	212.60	177.0	-0.5	-0.7	0.0	0.80	-0.33	
206.0	0.60	211.30	206.0	-0.7	-0.9	-0.1	0.69	0.69	
237.0	1.10	193.60	237.0	-1.1	-1.0	-0.4	1.80	1.61	
267.0	1.00	207.10	267.0	-1.6	-1.2	-0.7	0.89	-0.33	
297.0	1.30	298.80	297.0	-1.7	-1.6	-0.5	5.54	1.00	
327.0	2.00	299.20	327.0	-1.3	-2.4	0.2	2.33	2.33	
357.0	3.10	321.20	356.9	-0.4	-3.3	1.5	4.84	3.67	
388.0	4.30	323.60	387.9	1.2	-4.6	3.5	3.90	3.87	
418.0	5.10	323.30	417.8	3.2	-6.0	5.9	2.67	2.67	
448.0	5.90	333.90	447.6	5.6	-7.5	8.8	4.30	2.67	
509.0	6.40	335.70	508.3	11.5	-10.3	15.3	0.88	0.82	

# Cathedral Energy

## Survey Report

<b>Company:</b>	EnCana Oil & Gas (USA) Inc	<b>Local Co-ordinate Reference:</b>	Well NP WF04C-22 K22 596
<b>Project:</b>	North Piceance	<b>TVD Reference:</b>	Well @ 6549.0ft (Patterson 303)
<b>Site:</b>	K22 596 Pad (S22-T5S-R96W)	<b>MVD Reference:</b>	Well @ 6549.0ft (Patterson 303)
<b>Well:</b>	NP WF04C-22 K22 596	<b>North Reference:</b>	True
<b>Wellbore:</b>	DD	<b>Survey Calculation Method:</b>	Minimum Curvature
<b>Design:</b>	DD	<b>Database:</b>	EDM 5000.1 US Multi Users DB

Survey									
Measured Depth (ft)	Inclination (°)	Azimuth (°)	Vertical Depth (ft)	+N/-S (ft)	+E/-W (ft)	Vertical Section (ft)	Dogleg Rate (°/100ft)	Build Rate (°/100ft)	Formations / Comments
558.0	7.30	339.80	556.9	17.0	-12.5	21.0	2.09	1.84	
604.0	8.60	335.80	602.5	22.8	-14.9	27.3	3.07	2.83	
649.0	10.40	331.70	646.9	29.5	-18.2	34.6	4.27	4.00	
695.0	11.60	328.50	692.0	37.1	-22.6	43.4	2.93	2.61	
741.0	13.10	328.50	737.0	45.5	-27.7	53.2	3.26	3.26	
787.0	14.50	326.80	781.6	54.7	-33.6	64.2	3.17	3.04	
832.0	15.70	326.70	825.1	64.5	-40.0	75.9	2.67	2.67	
878.0	16.70	325.50	869.3	75.2	-47.2	88.8	2.29	2.17	
924.0	18.00	326.00	913.2	86.5	-54.9	102.5	2.84	2.83	
970.0	18.80	326.10	956.8	98.6	-63.0	117.0	1.74	1.74	
1,015.0	19.50	324.70	999.3	110.7	-71.4	131.7	1.86	1.56	
1,061.0	20.90	327.20	1,042.5	123.9	-80.3	147.6	3.57	3.04	
1,107.0	22.90	330.40	1,085.2	138.6	-89.2	164.8	5.06	4.35	
1,152.0	25.00	332.20	1,126.3	154.6	-97.9	183.0	4.94	4.67	
1,198.0	27.20	333.30	1,167.6	172.6	-107.2	203.1	4.90	4.78	
1,244.0	28.80	331.30	1,208.2	191.7	-117.2	224.6	4.03	3.48	
1,290.0	31.20	330.60	1,248.1	211.8	-128.4	247.6	5.27	5.22	
1,335.0	33.60	329.00	1,286.0	232.6	-140.5	271.7	5.66	5.33	
1,381.0	35.00	327.20	1,324.0	254.6	-154.2	297.6	3.76	3.04	
1,427.0	35.40	327.60	1,361.6	277.0	-168.5	324.1	1.00	0.87	
1,519.0	34.90	328.20	1,436.9	321.8	-196.7	377.1	0.66	-0.54	
1,610.0	34.20	327.10	1,511.8	365.4	-224.3	428.7	1.03	-0.77	
1,701.0	32.30	324.40	1,587.9	406.7	-252.3	478.5	2.65	-2.09	
1,785.0	31.70	325.30	1,659.1	443.1	-277.9	523.0	0.91	-0.71	
1,876.0	29.30	322.20	1,737.6	480.3	-305.2	569.1	3.15	-2.64	
1,968.0	28.70	320.20	1,818.0	515.1	-333.2	613.4	1.24	-0.65	
2,060.0	31.90	325.50	1,897.5	552.1	-361.1	659.7	4.53	3.48	
2,151.0	31.00	328.10	1,975.1	591.8	-387.1	707.2	1.79	-0.99	
2,243.0	34.70	327.90	2,052.4	634.1	-413.5	757.0	4.02	4.02	
2,334.0	34.10	326.90	2,127.5	677.5	-441.2	808.5	0.91	-0.66	
2,426.0	32.80	325.70	2,204.2	719.6	-469.3	859.2	1.59	-1.41	
2,517.0	35.30	327.80	2,279.6	762.3	-497.2	910.1	3.04	2.75	
2,608.0	34.80	329.60	2,354.1	806.9	-524.4	962.3	1.26	-0.55	
2,700.0	33.00	328.20	2,430.5	850.9	-550.9	1,013.6	2.13	-1.96	
2,791.0	35.60	330.60	2,505.6	895.0	-577.0	1,064.8	3.22	2.86	
2,883.0	33.80	330.30	2,581.3	940.6	-602.8	1,117.1	1.97	-1.96	
2,974.0	31.70	329.80	2,657.8	983.2	-627.4	1,166.3	2.33	-2.31	
3,066.0	32.60	331.10	2,735.7	1,025.8	-651.5	1,215.2	1.23	0.98	
3,157.0	34.60	328.90	2,811.5	1,069.4	-676.7	1,265.5	2.57	2.20	
3,248.0	33.10	328.60	2,887.1	1,112.7	-703.0	1,316.1	1.66	-1.65	
3,340.0	33.60	327.50	2,963.9	1,155.6	-729.7	1,366.7	0.85	0.54	
3,431.0	36.00	325.60	3,038.6	1,199.0	-758.4	1,418.6	2.89	2.64	
3,523.0	34.00	325.40	3,114.0	1,242.4	-788.3	1,471.4	2.18	-2.17	
3,614.0	32.10	325.30	3,190.3	1,283.3	-816.5	1,521.0	2.09	-2.09	
3,706.0	35.40	326.60	3,266.8	1,325.6	-845.1	1,572.1	3.67	3.59	
3,797.0	34.80	330.30	3,341.2	1,370.2	-872.5	1,624.4	2.43	-0.66	
3,888.0	32.40	328.60	3,417.0	1,413.6	-898.0	1,674.7	2.83	-2.64	
3,980.0	34.30	330.30	3,493.9	1,457.1	-923.7	1,725.2	2.30	2.07	
4,072.0	32.10	330.00	3,570.8	1,500.8	-948.8	1,775.5	2.40	-2.39	
4,163.0	35.00	327.10	3,646.7	1,543.7	-975.1	1,825.8	3.64	3.19	
4,255.0	32.40	326.00	3,723.2	1,586.3	-1,003.2	1,876.8	2.90	-2.83	
4,346.0	29.00	324.30	3,801.4	1,624.4	-1,029.7	1,923.2	3.86	-3.74	
4,438.0	26.90	322.60	3,882.7	1,659.1	-1,055.4	1,966.3	2.44	-2.28	

# Cathedral Energy

## Survey Report

<b>Company:</b>	EnCana Oil & Gas (USA) Inc	<b>Local Co-ordinate Reference:</b>	Well NP WF04C-22 K22 596
<b>Project:</b>	North Piceance	<b>TVD Reference:</b>	Well @ 6549.0ft (Patterson 303)
<b>Site:</b>	K22 596 Pad (S22-T5S-R96W)	<b>MD Reference:</b>	Well @ 6549.0ft (Patterson 303)
<b>Well:</b>	NP WF04C-22 K22 596	<b>North Reference:</b>	True
<b>Wellbore:</b>	DD	<b>Survey Calculation Method:</b>	Minimum Curvature
<b>Design:</b>	DD	<b>Database:</b>	EDM 5000.1 US Multi Users DB

Survey									
Measured Depth (ft)	Inclination (°)	Azimuth (°)	Vertical Depth (ft)	+N/-S (ft)	+E/-W (ft)	Vertical Section (ft)	Dogleg Rate (°/100ft)	Build Rate (°/100ft)	Formations / Comments
4,529.0	26.40	324.70	3,964.0	1,691.9	-1,079.5	2,007.0	1.17	-0.55	
4,620.0	25.00	325.50	4,046.0	1,724.3	-1,102.1	2,046.4	1.58	-1.54	
4,712.0	25.70	324.60	4,129.2	1,756.6	-1,124.7	2,085.8	0.87	0.76	
4,803.0	28.00	328.20	4,210.4	1,790.8	-1,147.4	2,126.9	3.09	2.53	
4,895.0	25.80	328.20	4,292.4	1,826.2	-1,169.3	2,168.5	2.39	-2.39	
4,987.0	28.30	327.90	4,374.3	1,861.7	-1,191.5	2,210.3	2.72	2.72	
5,078.0	27.00	326.80	4,454.9	1,897.2	-1,214.2	2,252.5	1.53	-1.43	
5,169.0	25.80	324.90	4,536.5	1,930.7	-1,236.9	2,293.0	1.61	-1.32	
5,261.0	24.10	324.80	4,619.9	1,962.5	-1,259.3	2,331.7	1.85	-1.85	
5,352.0	23.40	323.00	4,703.2	1,992.1	-1,280.9	2,368.3	1.11	-0.77	
5,440.0	21.40	325.10	4,784.5	2,019.2	-1,300.6	2,401.8	2.45	-2.27	
5,532.0	21.00	325.10	4,870.3	2,046.5	-1,319.6	2,435.0	0.43	-0.43	
5,624.0	17.80	329.60	4,957.1	2,072.1	-1,336.2	2,465.6	3.84	-3.48	
5,715.0	13.70	331.20	5,044.6	2,093.6	-1,348.4	2,490.2	4.53	-4.51	
5,806.0	8.10	335.40	5,133.9	2,108.9	-1,356.3	2,507.3	6.21	-6.15	
5,898.0	5.00	337.70	5,225.3	2,118.5	-1,360.5	2,517.7	3.38	-3.37	
5,989.0	4.30	342.60	5,316.0	2,125.4	-1,363.0	2,524.9	0.88	-0.77	
6,081.0	1.60	334.30	5,407.9	2,129.9	-1,364.6	2,529.5	2.96	-2.93	
6,172.0	0.90	254.00	5,498.9	2,130.8	-1,365.8	2,531.0	1.87	-0.77	
6,264.0	1.90	195.20	5,590.9	2,129.1	-1,366.9	2,530.2	1.77	1.09	
6,355.0	2.10	207.50	5,681.8	2,126.2	-1,368.1	2,528.3	0.52	0.22	
6,447.0	2.00	212.10	5,773.8	2,123.3	-1,369.7	2,526.8	0.21	-0.11	
6,538.0	1.90	176.50	5,864.7	2,120.5	-1,370.5	2,524.8	1.31	-0.11	
6,629.0	2.80	154.30	5,955.6	2,117.0	-1,369.4	2,521.3	1.39	0.99	
6,721.0	3.00	153.20	6,047.5	2,112.8	-1,367.4	2,516.7	0.23	0.22	
6,813.0	2.50	157.30	6,139.4	2,108.8	-1,365.5	2,512.3	0.58	-0.54	
6,904.0	2.40	174.50	6,230.3	2,105.1	-1,364.5	2,508.6	0.81	-0.11	
6,996.0	2.90	184.90	6,322.2	2,100.8	-1,364.6	2,505.1	0.75	0.54	
7,087.0	1.70	142.50	6,413.2	2,097.5	-1,363.9	2,501.9	2.20	-1.32	
7,179.0	2.20	70.20	6,505.1	2,097.0	-1,361.4	2,500.2	2.54	0.54	
7,270.0	2.20	46.20	6,596.1	2,098.8	-1,358.5	2,500.1	1.01	0.00	
7,362.0	1.30	33.50	6,688.0	2,100.9	-1,356.7	2,500.9	1.06	-0.98	
7,453.0	0.80	25.80	6,779.0	2,102.3	-1,355.8	2,501.6	0.57	-0.55	
7,545.0	0.40	347.00	6,871.0	2,103.2	-1,355.6	2,502.2	0.60	-0.43	
7,636.0	1.30	77.20	6,962.0	2,103.7	-1,354.7	2,502.2	1.50	0.99	
7,728.0	1.00	100.50	7,054.0	2,103.8	-1,352.9	2,501.3	0.60	-0.33	
7,819.0	0.40	183.50	7,145.0	2,103.4	-1,352.1	2,500.5	1.13	-0.66	
7,911.0	0.60	205.90	7,237.0	2,102.6	-1,352.4	2,500.0	0.30	0.22	
8,002.0	0.60	139.20	7,328.0	2,101.8	-1,352.3	2,499.3	0.72	0.00	
8,094.0	0.40	30.00	7,419.9	2,101.7	-1,351.8	2,498.9	0.89	-0.22	
8,185.0	0.80	313.90	7,510.9	2,102.5	-1,352.1	2,499.7	0.88	0.44	
8,276.0	1.70	328.30	7,601.9	2,104.0	-1,353.2	2,501.7	1.04	0.99	
8,368.0	2.00	358.60	7,693.9	2,106.8	-1,354.0	2,504.4	1.10	0.33	
8,439.0	1.90	327.60	7,764.8	2,109.0	-1,354.7	2,506.6	1.47	-0.14	
8,551.0	1.80	304.20	7,876.8	2,111.6	-1,357.1	2,510.1	0.68	-0.09	
8,642.0	2.80	275.40	7,967.7	2,112.6	-1,360.5	2,512.8	1.65	1.10	
8,734.0	2.20	243.60	8,059.6	2,112.0	-1,364.3	2,514.4	1.62	-0.65	
8,825.0	2.40	229.60	8,150.5	2,110.0	-1,367.3	2,514.3	0.65	0.22	
8,917.0	2.60	211.50	8,242.5	2,107.0	-1,369.9	2,513.1	0.88	0.22	
9,008.0	2.60	211.90	8,333.4	2,103.5	-1,372.1	2,511.4	0.02	0.00	
9,099.0	2.50	215.00	8,424.3	2,100.1	-1,374.3	2,509.7	0.19	-0.11	
9,191.0	2.70	218.40	8,516.2	2,096.8	-1,376.8	2,508.3	0.27	0.22	
9,283.0	3.20	222.70	8,608.1	2,093.2	-1,379.9	2,506.9	0.59	0.54	

# Cathedral Energy

## Survey Report

<b>Company:</b> EnCana Oil & Gas (USA) Inc	<b>Local Co-ordinate Reference:</b> Well NP WF04C-22 K22 596
<b>Project:</b> North Piceance	<b>TVD Reference:</b> Well @ 6549.0ft (Patterson 303)
<b>Site:</b> K22 596 Pad (S22-T5S-R96W)	<b>MD Reference:</b> Well @ 6549.0ft (Patterson 303)
<b>Well:</b> NP WF04C-22 K22 596	<b>North Reference:</b> True
<b>Wellbore:</b> DD	<b>Survey Calculation Method:</b> Minimum Curvature
<b>Design:</b> DD	<b>Database:</b> EDM 5000.1 US Multi Users DB

Survey									
Measured Depth (ft)	Inclination (°)	Azimuth (°)	Vertical Depth (ft)	+N/-S (ft)	+E/-W (ft)	Vertical Section (ft)	Dogleg Rate (°/100ft)	Build Rate (°/100ft)	Formations / Comments
9,374.0	3.60	234.30	8,698.9	2,089.6	-1,383.9	2,506.1	0.87	0.44	
9,425.0	3.90	236.10	8,749.8	2,087.7	-1,386.7	2,506.0	0.63	0.59	Last Cathedral Survey @ 9,425' MD
9,480.0	3.90	236.10	8,804.7	2,085.7	-1,389.8	2,505.9	0.00	0.00	Projection to Bit @ 9,480'

Targets									
Target Name	Dip Angle (°)	Dip Dir. (°)	TVD (ft)	+N/-S (ft)	+E/-W (ft)	Northing (ft)	Easting (ft)	Latitude	Longitude
K22 596 WF04C-22 BHL - hit/miss target - Shape	0.00	0.00	8,711.0	2,107.7	-1,354.8	1,656,300.34	2,249,666.22	39° 36' 18.47 N	108° 9' 48.22 W
- survey misses target center by 34.9ft at 9383.8ft MD (8708.7 TVD, 2089.3 N, -1384.4 E)									
- Rectangle (sides W30.0 H50.0 D0.0)									
K22 596 WF04C-22 TG1 - survey misses target center by 31.5ft at 5958.9ft MD (5286.0 TVD, 2123.2 N, -1362.3 E)	0.00	0.00	5,287.0	2,121.7	-1,330.8	1,656,313.67	2,249,690.63	39° 36' 18.61 N	108° 9' 47.91 W
- Point									

Survey Annotations				
Measured Depth (ft)	Vertical Depth (ft)	+N/-S (ft)	+E/-W (ft)	Comment
9,425.0	8,749.8	2,087.7	-1,386.7	Last Cathedral Survey @ 9,425' MD
9,480.0	8,804.7	2,085.7	-1,389.8	Projection to Bit @ 9,480'

Checked By: \_\_\_\_\_ Approved By: \_\_\_\_\_ Date: \_\_\_\_\_