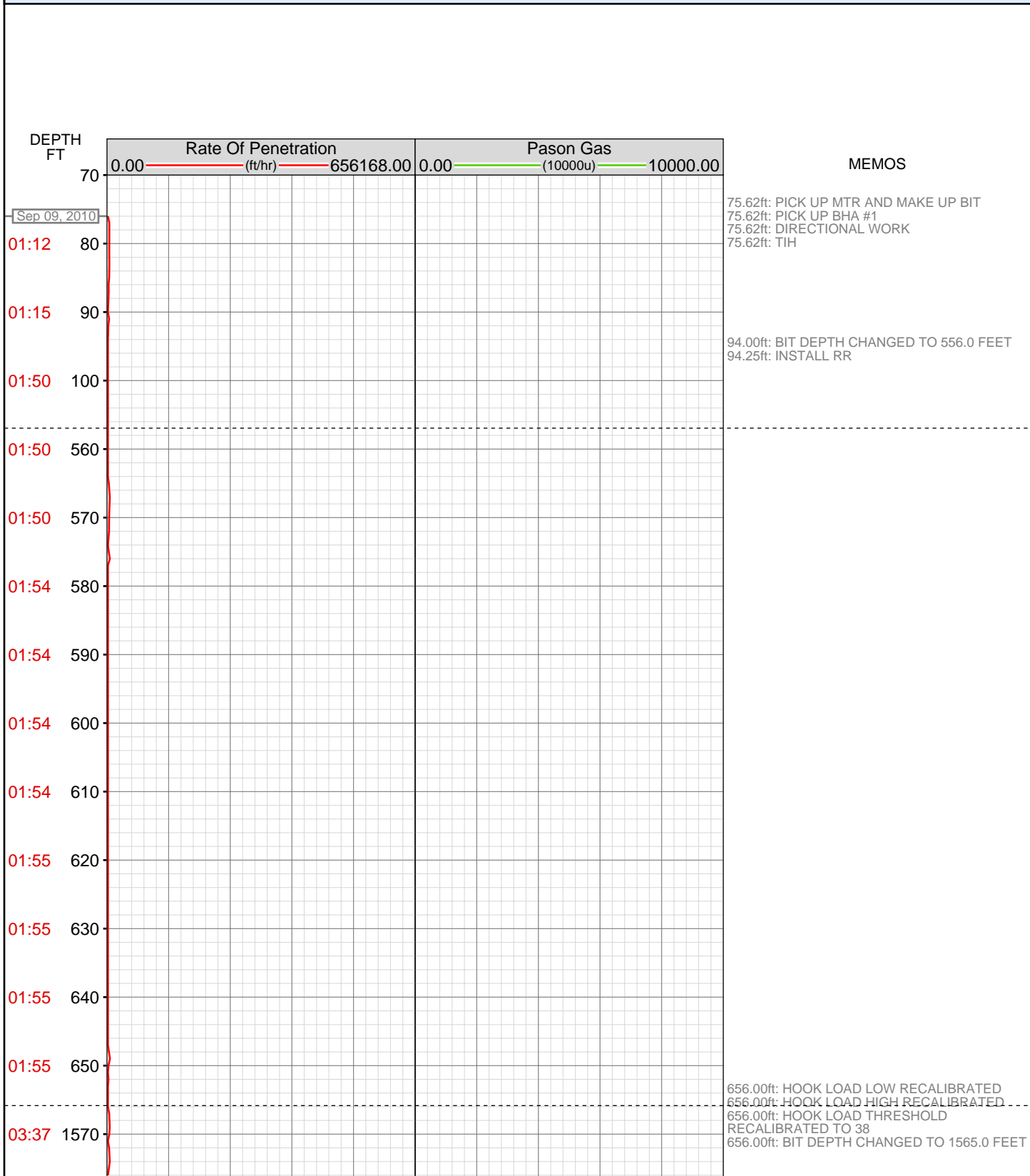


# DataHub EDR Log

Thu Sep 16, 2010 09:16:42  
Well Dossier 1283982321  
Marilyn Tucker

<b>OPERATOR:</b> EnCana Oil & Gas (USA), Inc.	<b>CONTRACTOR:</b> Patterson-UTI Drilling Company
<b>WELL:</b> NP WF04C-22 K-22 596	<b>UNIQUE WELL ID:</b> 05 045 18901 00
<b>FIELD:</b>	<b>SPUD DATE:</b> Sep 09, 2010 06:00
<b>LOCATION:</b> NESW SEC 22 TWP 5S RNG 96W MERIDIAN 10R	<b>RELEASE DATE:</b> Sep 15, 2010 09:00
<b>COUNTRY:</b> USA	
<b>RIG:</b> Pat-UTI 303	



03:37 1580  
03:37 1590  
03:37 1600  
03:37 1610  
03:37 1620  
03:37 1630  
03:38 1640  
03:38 1650  
03:43 1660  
03:43 1670  
03:43 1680  
03:43 1690  
03:44 1700  
03:44 1710  
03:44 1720  
03:44 1730  
03:44 1740  
03:55 1750  
03:55 1760  
03:57 1770  
04:03 1780  
05:21 1790

1759.00ft: ZERO ALL PUMPS from SideKick sk-06-03-3103  
1759.00ft: ZWOB from SideKick sk-06-03-3103  
1759.00ft: ZDiffPressure from SideKick sk-06-03-3103  
1759.00ft: IN TALLY: HOLE DEPTH SET TO 1748.8  
1759.00ft: ZDiffPressure from SideKick sk-06-03-3103  
1759.00ft: ZWOB from SideKick sk-06-03-3103  
1780.00ft: MUD VIS 0.40  
1780.00ft: MUD WEIGHT 8.50  
1780.00ft: ZDiffPressure from SideKick sk-06-03-3103  
1781.00ft: ZWOB from SideKick sk-06-03-3103  
1781.00ft: ZDiffPressure from SideKick sk-06-03-3103  
1781.00ft: ZWOB from SideKick sk-06-03-3103  
1781.00ft: ZDiffPressure from SideKick sk-06-03-3103

05:21 1800  
05:24 1810  
05:33 1820  
05:40 1830  
05:47 1840  
05:50 1850  
05:53 1860  
05:56 1870  
05:58 1880  
06:01 1890  
06:03 1900  
06:06 1910  
06:08 1920  
06:12 1930  
06:21 1940  
06:24 1950  
06:27 1960  
06:31 1970  
06:33 1980  
06:35 1990  
06:37 2000  
06:39 2010

1839.00ft: ZWOB from SideKick sk-06-03-3103  
1839.00ft: ZWOB from SideKick sk-06-03-3103

1931.00ft: IN TALLY: HOLE DEPTH SET TO  
1931.9  
1931.93ft: SLIDING  
1931.93ft: SURVEY @ 1876 INC 29.3 AZI 322.2

1969.00ft: MUD VIS 0.44  
1969.99ft: ROTATING  
1970.00ft: MUD WEIGHT 8.70

06:41 2020  
06:49 2030  
06:52 2040  
06:56 2050  
06:59 2060  
07:03 2070  
07:06 2080  
07:09 2090  
07:11 2100  
07:13 2110  
07:20 2120  
07:22 2130  
07:24 2140  
07:27 2150  
07:29 2160  
07:32 2170  
07:35 2180  
07:37 2190  
07:39 2200  
07:49 2210  
07:55 2220  
07:59 2230

2023.00ft: IN TALLY: HOLE DEPTH SET TO  
2023.6  
2023.55ft: SURVEY @ 1968 INC 28.7 AZI 320.2  
2023.55ft: SLIDING  
2023.55ft: ZDiffPressure from SideKick  
sk-06-03-3103

2113.62ft: Connection at 2115.0  
2115.00ft: IN TALLY: HOLE DEPTH SET TO  
2115.0  
2115.02ft: SURVEY @ 2060 INC 31.9 AZI 325.5  
ROTATING

2124.28ft: PUMP SWEEP

2176.00ft: MUD VIS 0.45  
2176.00ft: MUD WEIGHT 8.70

2205.00ft: IN TALLY: HOLE DEPTH SET TO  
2206.6  
2206.00ft: ZDiffPressure from SideKick  
sk-06-03-3103  
2206.60ft: Connection at 2206.6  
2206.60ft: SURVEY @ 2151 INC 31.0 AZI 328.1  
SLIDING

08:05 2240  
08:07 2250  
08:09 2260  
08:12 2270  
08:20 2280  
08:20 2290  
08:20 2300  
08:22 2310  
08:25 2320  
08:27 2330  
08:29 2340  
08:31 2350  
08:34 2360  
08:36 2370  
08:39 2380  
08:47 2390  
08:49 2400  
08:52 2410  
08:54 2420  
08:56 2430  
08:58 2440  
09:01 2450

2277.00ft: IN TALLY: HOLE DEPTH SET TO  
2298.2  
2277.00ft: ZWOB from SideKick sk-06-03-3103  
2277.00ft: ZDiffPressure from SideKick  
sk-06-03-3103

2298.19ft: Connection at 2389.7  
2298.19ft: SURVEY @ 2243 inc 34.7 azi 327.9 tvd  
2052.36 ROTATING

2389.00ft: IN TALLY: HOLE DEPTH SET TO  
2389.7  
2389.00ft: MUD VIS 0.45  
2389.00ft: MUD WEIGHT 8.80  
2389.15ft: Connection at 2389.7  
2389.65ft: SURVEY @ 2334 INC 34.1 AZI 326.9  
2389.65ft: ROTATING

09:03 2460  
09:05 2470  
09:07 2480  
09:15 2490  
09:19 2500  
09:22 2510  
09:26 2520  
09:29 2530  
09:32 2540  
09:34 2550  
09:36 2560  
09:38 2570  
09:46 2580  
09:49 2590  
09:53 2600  
09:55 2610  
09:57 2620  
09:59 2630  
10:01 2640  
10:04 2650  
10:09 2660  
10:16 2670

2481.00ft: ZDiffPressure from SideKick  
sk-06-03-3103  
2481.04ft: Connection at 2481.1  
2481.07ft: IN TALLY: HOLE DEPTH SET TO  
2481.1  
2481.07ft: SURVEY @ 2426 INC 32.8 AZI 325.7  
2481.07ft: SLIDING

2526.87ft: ROTATING

2569.50ft: Connection at 2572.5  
2572.00ft: IN TALLY: HOLE DEPTH SET TO  
2572.5  
2572.51ft: SURVEY @ 2517 INC 35.3 AZI 327.8  
SLIDING

2593.01ft: ROTATING

2610.00ft: MUD VIS 0.44  
2610.00ft: MUD WEIGHT 8.80  
2613.82ft: PUMP SWEEP

2663.41ft: Connection at 2663.9  
2663.93ft: SURVEY @ 2608 INC 34.8 AZI 329.6  
TVD 2354.10 ROTATING  
2664.00ft: IN TALLY: HOLE DEPTH SET TO  
2663.9

10:19 2680  
10:21 2690  
10:23 2700  
10:26 2710  
10:28 2720  
10:31 2730  
10:33 2740  
10:35 2750  
10:44 2760  
10:48 2770  
10:52 2780  
10:55 2790  
10:58 2800  
11:01 2810  
11:03 2820  
11:05 2830  
11:07 2840  
11:14 2850  
11:16 2860  
11:18 2870  
11:20 2880  
11:22 2890

2755.00ft: IN TALLY: HOLE DEPTH SET TO  
2755.4  
2755.32ft: Connection at 2755.4  
2755.41ft: SURVEY @ 2700 INC 33.0 AZI 328.2  
2759.37ft: SLIDING

2798.57ft: ROTATING

2822.00ft: MUD VIS 0.50  
2822.00ft: MUD WEIGHT 8.90

2844.48ft: Connection at 2846.8  
2846.00ft: IN TALLY: HOLE DEPTH SET TO  
2846.8  
2846.00ft: ZWOB from SideKick sk-06-03-3103  
2846.81ft: SURVEY @ 2791 INC 35.6 AZI 330.6  
ROTATING  
2846.81ft: ZDiffPressure from SideKick  
sk-06-03-3103

11:23 2900  
11:25 2910  
11:27 2920  
11:29 2930  
11:38 2940  
11:40 2950  
11:42 2960  
11:44 2970  
11:47 2980  
11:49 2990  
11:51 3000  
11:53 3010  
11:54 3020  
12:00 3030  
12:05 3040  
12:08 3050  
12:12 3060  
12:14 3070  
12:18 3080  
12:19 3090  
12:21 3100  
12:23 3110

2938.00ft: IN TALLY: HOLE DEPTH SET TO  
2938.3  
2938.33ft: Connection at 2938.3  
2938.33ft: SURVEY @ 2883 INC 33.8 AZI 330.3  
TVD 2581.27 ROTATING

3012.00ft: MUD VIS 0.53  
3012.00ft: MUD WEIGHT 9.00

3029.00ft: IN TALLY: HOLE DEPTH SET TO  
3029.7  
3029.68ft: Connection at 3029.7  
3030.71ft: SLIDING SURVEY @ 2974 INC 31.7  
AZI 329.8

3080.24ft: ROTATING

12:25 3120  
12:32 3130  
12:36 3140  
12:41 3150  
12:44 3160  
12:47 3170  
12:50 3180  
12:51 3190  
12:53 3200  
12:55 3210  
13:01 3220  
13:03 3230  
13:04 3240  
13:06 3250  
13:08 3260  
13:10 3270  
13:12 3280  
13:14 3290  
13:16 3300  
13:23 3310  
13:29 3320  
13:33 3330

3117.00ft: UZ1TGAS 03090394 SW0.27 HW25.00  
- 161 days on  
3121.00ft: IN TALLY: HOLE DEPTH SET TO  
3121.0  
3121.01ft: SURVEY @ 3066 INC 32.6 AZI 331.1  
SLIDING  
3121.16ft: Connection at 3121.0

3167.58ft: ROTATING

3203.00ft: MUD VIS 0.54  
3204.00ft: MUD WEIGHT 9.00

3212.00ft: IN TALLY: HOLE DEPTH SET TO  
3212.3  
3212.03ft: Connection at 3212.3

3223.95ft: SURVEY @ 3157 INC 34.6 AZI 328.9  
TVD 2811.49 ROTATING

3302.99ft: IN TALLY: HOLE DEPTH SET TO  
3303.9  
3303.25ft: Connection at 3303.9  
3305.12ft: SLIDING SURVEY @ 3248 INC 33.1  
AZI 328.6  
3308.99ft: ZDiffPressure from SideKick  
sk-06-03-3103

13:36 3340

13:39 3350

3350.69ft: ROTATING

13:42 3360

13:43 3370

13:45 3380

13:47 3390

3392.32ft: Connection at 3395.4  
3395.01ft: IN TALLY: HOLE DEPTH SET TO  
3395.4  
3395.41ft: SURVEY @ 3340 INC 33.6 AZI 327.5  
3395.41ft: SLIDING

13:54 3400

13:59 3410

14:03 3420

3423.00ft: MUD VIS 0.55  
3423.00ft: MUD WEIGHT 9.10

14:08 3430

14:13 3440

3441.44ft: ROTATING

14:15 3450

14:17 3460

14:19 3470

14:22 3480

3485.50ft: Connection at 3486.8  
3485.99ft: IN TALLY: HOLE DEPTH SET TO  
3486.8  
3486.78ft: ROTATING

14:27 3490

14:30 3500

14:32 3510

3509.74ft: SURVEY @ 3431 INC 36.0 AZI 325.6

14:34 3520

14:36 3530

14:38 3540

14:40 3550

3547.54ft: PUMP SWEEP

14:43 3560

14:45 3570

14:53 3580

14:56 3590

14:58 3600

15:00 3610

15:02 3620

15:04 3630

15:06 3640

15:08 3650

15:10 3660

15:16 3670

15:23 3680

15:28 3690

15:33 3700

15:37 3710

15:41 3720

15:44 3730

15:46 3740

15:48 3750

15:50 3760

15:57 3770

3576.51ft: Connection at 3578.3  
3577.99ft: IN TALLY: HOLE DEPTH SET TO 3578.3  
3577.99ft: ZWOB from SideKick sk-06-03-3103  
3577.99ft: ZDiffPressure from SideKick sk-06-03-3103  
3578.35ft: SURVEY 3523 INC 34 AZI 325.4  
3585.01ft: MUD VIS 0.58  
3585.01ft: MUD WEIGHT 9.20  
3589.47ft: ROTATING

3668.86ft: Connection at 3669.8  
3669.00ft: IN TALLY: HOLE DEPTH SET TO 3669.8  
3669.00ft: ZDiffPressure from SideKick sk-06-03-3103  
3669.82ft: SURVEY @ 3614 INC 32.1 AZI 325.3  
3669.82ft: SLIDING

3728.81ft: ROTATING

3754.23ft: SURVEY @ 3706 INC 35.4 AZI 326.6  
3759.12ft: Connection at 3761.2  
3760.99ft: IN TALLY: HOLE DEPTH SET TO 3761.2  
3760.99ft: MUD VIS 0.57  
3760.99ft: MUD WEIGHT 9.20  
3762.86ft: SLIDING

16:01 3780

16:06 3790

16:09 3800

16:11 3810

16:14 3820

16:16 3830

16:18 3840

16:20 3850

16:35 3860

16:38 3870

16:41 3880

16:43 3890

16:46 3900

16:49 3910

16:51 3920

16:54 3930

16:56 3940

17:07 3950

17:12 3960

17:17 3970

17:22 3980

17:26 3990

3795.83ft: ROTATING

3852.00ft: IN TALLY: HOLE DEPTH SET TO  
3852.5  
3852.53ft: RIG SERVICE  
3852.53ft: Connection at 3852.5  
3856.33ft: SURVEY @ 3797 INC 34.8 AZI 330.3  
TVD 3341.21 ROTATING

3925.98ft: MUD VIS 0.50  
3925.98ft: MUD WEIGHT 9.30

3943.01ft: IN TALLY: HOLE DEPTH SET TO  
3944.0  
3943.96ft: SLIDING  
3944.00ft: Connection at 3944.0  
3947.77ft: SURVEY @ 3888 INC 32.4 AZI 328.6

17:30 4000

17:32 4010

17:34 4020

17:37 4030

4034.48ft: Connection at 4035.4  
4035.01ft: IN TALLY: HOLE DEPTH SET TO 4035.4  
4035.40ft: SPR  
4035.40ft: SURVEY @ 3980 INC 34.3 AZI 330.3 TVD 3493.85  
4040.45ft: ROTATING

17:47 4040

17:48 4050

17:51 4060

17:53 4070

17:56 4080

17:59 4090

18:01 4100

18:03 4110

4114.01ft: MUD VIS 0.48  
4114.01ft: MUD WEIGHT 9.30

18:05 4120

4127.00ft: ZWOB from SideKick sk-06-03-3103  
4127.00ft: ZDiffPressure from SideKick sk-06-03-3103  
4127.03ft: IN TALLY: HOLE DEPTH SET TO 4127.0  
4127.03ft: Connection at 4127.0  
4127.03ft: SURVEY@4072/ 32.1 INC/ 330.0 AZ/ 3570.8 TVD  
4129.00ft: SLIDING

18:18 4130

18:24 4140

18:29 4150

18:33 4160

18:38 4170

4173.23ft: ROTATING

18:42 4180

18:45 4190

18:47 4200

18:48 4210

18:55 4220

4218.01ft: ZWOB from SideKick sk-06-03-3103  
4218.01ft: ZDiffPressure from SideKick sk-06-03-3103  
4218.41ft: Connection at 4218.6  
SURVEY@4163'/35.0 INC/ 327.1 AZ/ 3646.6 TVD

18:58 4230

19:00 4240

19:03 4250

19:06 4260

4256.00ft: ZERO ALL PUMPS from SideKick sk-05-05-1268

19:08 4270

19:11 4280

19:16 4290

19:19 4300

19:22 4310

4310.01ft: IN TALLY: HOLE DEPTH SET TO 4310.1  
4310.01ft: ZWOB from SideKick sk-06-03-3103  
4310.01ft: ZDiffPressure from SideKick sk-06-03-3103  
4310.11ft: SURVEY@4255' /32.4 INC/ 326.0 AZ/ 3723.2 TVD  
4310.11ft: Connection at 4310.1  
4312.01ft: ZERO ALL PUMPS from SideKick sk-05-05-1268

19:30 4320

19:33 4330

19:35 4340

4341.99ft: MUD VIS 0.49  
4343.08ft: MUD WEIGHT 9.30

19:38 4350

19:40 4360

19:42 4370

19:45 4380

19:48 4390

19:50 4400

4400.20ft: Connection at 4401.6  
4400.98ft: ZWOB from SideKick sk-06-03-3103  
4400.98ft: ZDiffPressure from SideKick sk-06-03-3103  
4401.57ft: SURVEY@4346'/ 29.0 INC/ 324.3 AZ/ 3801.4 TVD

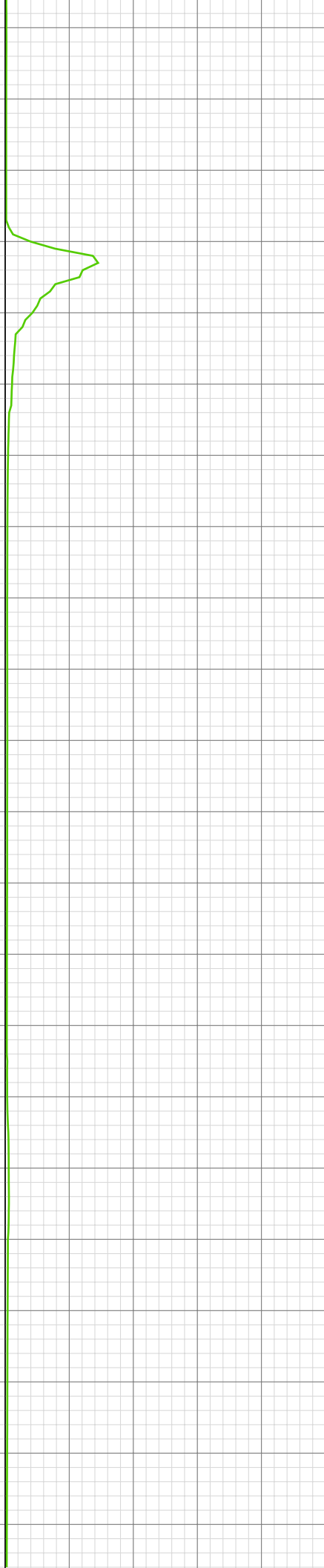
19:58 4410

20:01 4420

20:10 4430

4426.74ft: SLIDING

20:25 4440  
20:31 4450  
20:42 4460  
20:51 4470  
20:59 4480  
21:04 4490  
21:12 4500  
21:17 4510  
21:19 4520  
21:22 4530  
21:25 4540  
21:26 4550  
21:29 4560  
21:32 4570  
21:35 4580  
21:47 4590  
21:51 4600  
21:57 4610  
22:00 4620  
22:03 4630  
22:05 4640  
22:08 4650



4481.53ft: ROTATING  
4493.01ft: IN TALLY: HOLE DEPTH SET TO  
4493.0  
4493.01ft: ZDiffPressure from SideKick  
sk-06-03-3103  
4493.04ft: Connection at 4493.0  
4493.04ft: SURVEY@4438' /26.9 INC/ 322.6 AZ/  
3882.7 TVD  
4493.04ft: PUMP SWEEP  
4499.02ft: ZERO ALL PUMPS from SideKick  
sk-05-05-1268

4583.99ft: PVT Horn Disabled  
4583.99ft: ZDiffPressure from SideKick  
sk-06-03-3103  
4583.99ft: ZDiffPressure from SideKick  
sk-06-03-3103  
4583.99ft: ZWOB from SideKick sk-06-03-3103  
4584.38ft: Connection at 4584.5 SURVEY@4529/  
26.4 INC/ 324.7 AZ/ 3964.0 TVD  
4584.38ft: SLIDING  
4584.38ft: SLIDING  
4594.00ft: PVT Horn Enabled

4604.99ft: MUD VIS 0.47  
4605.87ft: MUD WEIGHT 9.35  
4608.96ft: ROTATING  
4608.99ft: ZDiffPressure from SideKick  
sk-06-03-3103  
4610.01ft: ZERO ALL PUMPS from SideKick  
sk-05-05-1268  
4610.89ft: PUMP SWEEP

22:10 4660

22:13 4670

22:25 4680

22:32 4690

22:41 4700

22:52 4710

23:01 4720

23:06 4730

23:11 4740

23:14 4750

23:16 4760

23:27 4770

23:34 4780

23:41 4790

23:45 4800

23:50 4810

23:52 4820

23:55 4830

23:58 4840

4 Sep 10, 2010

00:10 4860

00:13 4870

4672.15ft: Connection at 4675.9  
4675.00ft: ZDiffPressure from SideKick  
sk-06-03-3103  
4675.46ft: SLIDING

4708.53ft: TRANSFER TO ATIVE 90 BBL

4737.99ft: ZDiffPressure from SideKick  
sk-06-03-3103

4767.09ft: ZDiffPressure from SideKick  
sk-06-03-3103  
4767.09ft: Connection at 4767.3

4776.57ft: SLIDING

4800.00ft: ZDiffPressure from SideKick  
sk-06-03-3103  
4800.00ft: ZDiffPressure from SideKick  
sk-06-03-3103  
4800.49ft: ROTATING

4835.01ft: MUD VIS 0.46  
4835.01ft: MUD WEIGHT 9.20

4858.01ft: ZWOB from SideKick sk-06-03-3103  
4858.01ft: ZDiffPressure from SideKick  
sk-06-03-3103  
4858.27ft: Connection at 4858.9 ROTATING  
4858.27ft: SURVEY@4803/ 28.0 INC/ 328.2 AZ/  
4210.3 TVD

00:16 4880

4885.20ft: WATER 10 TO 15 GAL MIN

00:21 4890

4889.01ft: ZDiffPressure from SideKick  
sk-06-03-3103

00:23 4900

00:25 4910

00:28 4920

00:30 4930

00:33 4940

00:35 4950

4950.00ft: ZDiffPressure from SideKick  
sk-06-03-3103  
4950.03ft: Connection at 4950.5  
4950.03ft: SLIDING

00:51 4960

00:57 4970

01:04 4980

4983.01ft: MUD VIS 0.46  
4983.14ft: MUD WEIGHT 9.30

01:12 4990

4991.99ft: ZERO ALL PUMPS from SideKick  
sk-05-05-1268  
4991.99ft: ZDiffPressure from SideKick  
sk-06-03-3103  
4992.98ft: ROTATING

01:18 5000

5006.36ft: PUMP SWEEP

01:25 5010

01:30 5020

01:34 5030

01:49 5040

5039.99ft: ZWOB from SideKick sk-06-03-3103

01:54 5050

5045.80ft: Connection at 5042.0

01:57 5060

01:59 5070

5067.55ft: ROTATING

02:02 5080

02:05 5090

02:07 5100  
02:09 5110  
02:13 5120  
02:16 5130  
02:30 5140  
02:32 5150  
02:35 5160  
02:37 5170  
02:40 5180  
02:43 5190  
02:49 5200  
02:52 5210  
02:55 5220  
03:07 5230  
03:10 5240  
03:12 5250  
03:14 5260  
03:18 5270  
03:21 5280  
03:24 5290  
03:26 5300  
03:29 5310

5131.99ft: PVT Horn Disabled  
5131.99ft: ZWOB from SideKick sk-06-03-3103  
5131.99ft: ZDiffPressure from SideKick  
sk-06-03-3103  
5132.12ft: Connection at 5133.4  
5137.99ft: PVT Horn Enabled

5174.02ft: ZERO ALL PUMPS from SideKick  
sk-05-05-1268

5182.74ft: PUMP SWEEP

5198.00ft: MUD VIS 0.46  
5198.00ft: MUD WEIGHT 9.35

5224.02ft: IN TALLY: HOLE DEPTH SET TO  
5224.9  
5224.02ft: PVT Horn Disabled  
5224.02ft: ZWOB from SideKick sk-06-03-3103  
5224.02ft: ZDiffPressure from SideKick  
sk-06-03-3103  
5224.02ft: ZDiffPressure from SideKick  
sk-06-03-3103  
5224.90ft: SURVEY@5169/ 26 INC/ 324.9 AZ/  
4536.3 TVD  
5224.90ft: Connection at 5224.9

5245.01ft: PVT Horn Enabled

5316.01ft: ZDiffPressure from SideKick  
sk-06-03-3103

03:39 5320  
03:42 5330  
03:45 5340  
03:54 5350  
03:56 5360  
03:59 5370  
04:02 5380  
04:04 5390  
04:07 5400  
13:33 5410  
13:38 5420  
13:50 5430  
13:59 5440  
14:07 5450  
14:10 5460  
14:13 5470  
14:16 5480  
14:19 5490  
14:32 5500  
14:41 5510  
14:45 5520  
14:56 5530

5316.83ft: SURVEY@5261/ 24.1 INC/ 324.8 AZ/  
4619.8 TVD  
5316.83ft: Connection at 5316.4

5347.01ft: ZDiffPressure from SideKick  
sk-06-03-3103  
5347.01ft: MUD VIS 0.44  
5347.01ft: MUD WEIGHT 9.30

5395.01ft: ZERO ALL PUMPS from SideKick  
sk-06-03-3868  
5407.87ft: IN TALLY: HOLE DEPTH SET TO  
5407.9  
5407.87ft: FLOW CHECK  
5407.87ft: FLOW CHECK  
5407.87ft: NO FLOW  
5407.87ft: FLOW CHECK  
5407.87ft: NO FLOW  
5407.87ft: ROTATING RUBBER  
5407.87ft: FILL PIPE  
5407.87ft: PUMP OUT CELLAR  
5407.87ft: Connection at 5404.5  
5408.01ft: MUD VIS 0.44  
5408.01ft: MUD WEIGHT 9.40  
5408.01ft: ZERO ALL PUMPS from SideKick  
sk-05-05-1268  
5408.01ft: 021TGAS 03090394 SW0.27 HW25.00  
- 162 days on  
5408.01ft: MUD VIS 0.44  
5408.01ft: MUD WEIGHT 9.70  
5408.01ft: BIT DEPTH CHANGED TO 5133.0  
FEET  
5408.01ft: ZDiffPressure from SideKick  
sk-06-03-3103  
5408.01ft: ZWOB from SideKick sk-06-03-3103  
5408.01ft: IN TALLY: HOLE DEPTH SET TO  
5404.5  
5423.00ft: ZDiffPressure from SideKick  
sk-06-03-3103  
5423.00ft: ZDiffPressure from SideKick  
sk-06-03-3103  
5423.98ft: SLIDING  
5426.44ft: SLIDING  
5438.09ft: BUILDING VOLUME

5447.01ft: ZDiffPressure from SideKick  
sk-06-03-3103  
5447.08ft: ROTATING

5495.01ft: IN TALLY: HOLE DEPTH SET TO  
5496.0  
5495.34ft: Connection at 5496.0  
5495.96ft: SURVEY @ 5440 INC 21.4 AZI 325.1  
5497.01ft: ZDiffPressure from SideKick  
sk-06-03-3103  
5498.88ft: SLIDING

5527.72ft: ROTATING

14:59 5540

5546.00ft: MUD VIS 0.50  
5546.00ft: MUD WEIGHT 9.70

15:02 5550

15:05 5560

15:08 5570

15:12 5580

5587.01ft: IN TALLY: HOLE DEPTH SET TO  
5587.5  
5587.53ft: Connection at 5587.5  
5587.53ft: SURVEY @ 5532 INC 21.0 AZI 325.1  
TVD 4870.28  
5587.53ft: SLIDING

15:25 5590

15:33 5600

15:43 5610

5612.01ft: MUD VIS 0.47  
5612.01ft: MUD WEIGHT 9.70

15:51 5620

16:02 5630

16:21 5640

5638.48ft: CLEAN PUMP SCREENS  
5638.48ft: ROTATING

16:25 5650

16:28 5660

16:31 5670

5677.00ft: IN TALLY: HOLE DEPTH SET TO  
5679.1  
5677.00ft: ZDiffPressure from SideKick  
sk-06-03-3103  
5677.82ft: RIG SERVICE  
5679.07ft: Connection at 5679.1  
5679.07ft: SURVEY @ 5624 INC 17.8 AZI 329.6  
5680.48ft: SLIDING  
5683.01ft: MUD VIS 0.44  
5683.01ft: MUD WEIGHT 9.60

17:02 5680

17:16 5690

17:22 5700

17:28 5710

17:34 5720

17:40 5730

17:46 5740

17:52 5750

5750.98ft: ZWOB from SideKick sk-06-03-3103  
5750.98ft: ZDiffPressure from SideKick  
sk-06-03-3103  
5751.84ft: ROTATING

17:59 5760

18:02 5770

18:17 5780

18:23 5790

18:29 5800

18:38 5810

18:43 5820

19:26 5830

19:40 5840

19:43 5850

19:45 5860

20:17 5870

20:31 5880

20:47 5890

21:01 5900

21:15 5910

21:22 5920

21:28 5930

21:34 5940

21:43 5950

22:01 5960

22:07 5970

5768.96ft: Connection at 5770.5  
5770.01ft: IN TALLY: HOLE DEPTH SET TO 5770.5  
5770.54ft: SURVEY@5715'/ 13.7 INC/ 331.2 AZ/ 5044.6 TVD  
5770.54ft: SLIDING

5783.99ft: MUD VIS 0.45  
5785.01ft: MUD WEIGHT 9.65

5824.28ft: SLIDING  
5825.30ft: WATER 35GAL MIN

5839.01ft: ZWOB from SideKick sk-06-03-3103  
5839.01ft: ZDiffPressure from SideKick sk-06-03-3103

5861.98ft: SURVEY@5806'/ 8.1 INC/ 335.4 AZ/ 5133.9 TVD  
5862.01ft: IN TALLY: HOLE DEPTH SET TO 5862.0  
5862.01ft: PVT Horn Disabled  
5862.01ft: PVT Horn Enabled  
5862.01ft: ZDiffPressure from SideKick sk-06-03-3103  
5862.01ft: ZDIFF from DHC  
5862.01ft: MUD VIS 0.40  
5862.01ft: MUD WEIGHT 9.65  
5862.99ft: PVT Horn Disabled  
5863.35ft: WATER 55GAL MIN  
5864.73ft: DUMP SAND TRAP 5 BBL  
5865.32ft: Connection at 5862.0  
5879.00ft: MUD VIS 0.41  
5879.00ft: MUD WEIGHT 9.70

5900.00ft: ZDiffPressure from SideKick sk-06-03-3103  
5900.00ft: ZWOB from SideKick sk-06-03-3103  
5900.00ft: ZERO ALL PUMPS from SideKick sk-05-05-1268  
5900.00ft: ZDiffPressure from SideKick sk-06-03-3103  
5900.00ft: ZWOB from SideKick sk-06-03-3103  
5900.23ft: PUMP SWEEP FORMATION CHANGE  
5900.23ft: ZDiffPressure from SideKick sk-06-03-3103  
5902.00ft: PVT Horn Enabled

5925.00ft: MUD VIS 0.40  
5925.39ft: MUD WEIGHT 9.55

5948.52ft: WARTER 20GAL MIN  
5952.99ft: IN TALLY: HOLE DEPTH SET TO 5953.5  
5952.99ft: ZWOB from SideKick sk-06-03-3103  
5952.99ft: ZDiffPressure from SideKick sk-06-03-3103  
5953.58ft: Connection at 5953.5  
5953.58ft: SURVEY@5898'/ 5.0 INC/ 337.7 AZ/ 5225.3 TVD

22:15 5980  
22:21 5990  
22:27 6000  
22:47 6010  
23:05 6020  
23:22 6030  
23:34 6040  
23:50 6050  
1 Sep 11, 2010  
00:14 6060  
00:22 6070  
00:41 6080  
00:58 6090  
01:19 6100  
01:30 6110  
01:48 6120  
01:54 6130  
02:13 6140  
02:16 6150  
02:21 6160  
02:26 6170  
02:31 6180  
02:48 6190



5993.80ft: RESUME DRILLING  
6000.00ft: ZWOB from SideKick sk-06-03-3103  
6000.00ft: ZDiffPressure from SideKick sk-06-03-3103  
6000.00ft: MUD VIS 0.41  
6000.00ft: MUD WEIGHT 9.60  
6000.16ft: SLIDING  
  
6010.30ft: SLIDING  
6014.01ft: MUD VIS 0.41  
6014.57ft: MUD WEIGHT 9.55  
  
6044.00ft: ZWOB from SideKick sk-06-03-3103  
6044.00ft: MUD VIS 0.43  
6044.00ft: MUD WEIGHT 9.55  
6044.85ft: Connection at 6045.0 SURVEY@5989/  
4.3 INC/ 342.6 AZ/ 5316.0 TVD  
6052.00ft: ZDiffPressure from SideKick sk-06-03-3103  
6052.30ft: ROTATING  
6052.30ft: ROTATING  
  
6076.25ft: SLIDING  
  
6083.01ft: ZERO ALL PUMPS from SideKick sk-05-05-1268  
  
6090.88ft: MAKE UP WATER 10 GPM  
6091.01ft: MUD VIS 0.44  
6091.01ft: MUD WEIGHT 9.50  
  
6116.01ft: ZERO ALL PUMPS from SideKick sk-05-05-1268  
6116.01ft: ZDiffPressure from SideKick sk-06-03-3103  
6116.01ft: ZWOB from SideKick sk-06-03-3103  
6116.60ft: ROTATING  
6116.60ft: PUMP SWEEP  
  
6133.99ft: IN TALLY: HOLE DEPTH SET TO 6136.5  
6133.99ft: MUD VIS 0.44  
6133.99ft: MUD WEIGHT 9.55  
6133.99ft: ZDiffPressure from SideKick sk-06-03-3103  
6136.45ft: SURVEY@6081/ 1.6 INC/ 334.3 AZ/ 5407.9 TVD  
6136.45ft: Connection at 6136.5  
6136.45ft: ROTATING  
6136.45ft: ZWOB from SideKick sk-06-03-3103  
  
6183.99ft: ZDiffPressure from SideKick sk-06-03-3103  
6184.74ft: CHECK SHOT SURVEY  
6184.74ft: SLIDING

03:02 6200  
03:13 6210  
03:27 6220  
03:54 6230  
03:58 6240  
04:02 6250  
04:11 6260  
04:14 6270  
04:23 6280  
04:26 6290  
04:29 6300  
04:32 6310  
04:47 6320  
04:51 6330  
04:54 6340  
04:59 6350  
05:02 6360  
05:06 6370  
05:10 6380  
05:14 6390  
05:17 6400  
05:20 6410



6227.89ft: SURVEY@6172'/ 0.9 INC/ 254.0 AZ/  
5498.8 TVD  
6227.89ft: Connection at 6227.9 ROTATING  
6227.89ft: ZDiffPressure from SideKick  
sk-06-03-3103  
6227.99ft: IN TALLY: HOLE DEPTH SET TO  
6227.9  
6227.99ft: ZWOB from SideKick sk-06-03-3103  
6235.01ft: ZERO ALL PUMPS from SideKick  
sk-05-05-1268

6253.54ft: SWEEP OUT OF PIPE

6270.01ft: MUD VIS 0.49  
6270.01ft: MUD WEIGHT 9.70

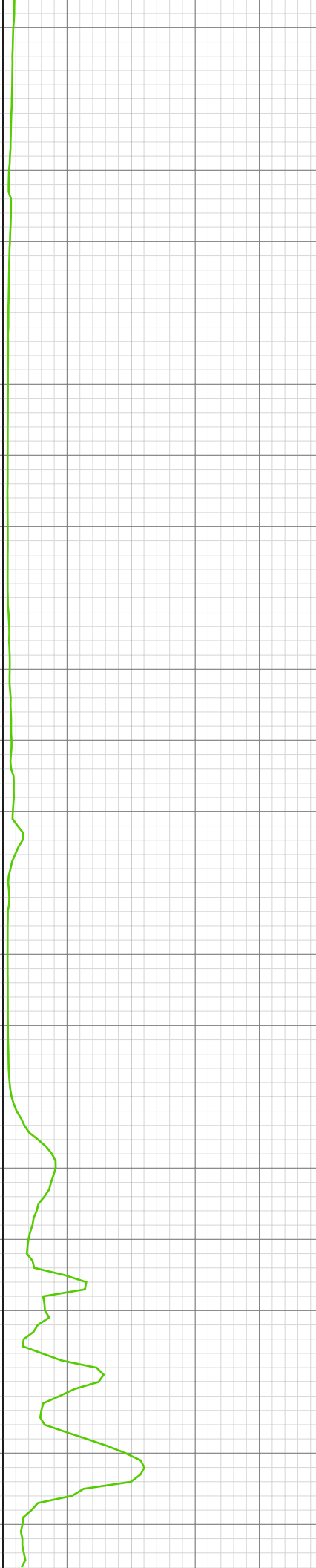
6275.59ft: CHECKSHOT

6319.00ft: ZWOB from SideKick sk-06-03-3103  
6319.00ft: ZDiffPressure from SideKick  
sk-06-03-3103  
6319.49ft: Connection at 6319.4  
6319.49ft: SURVEY@6264'/1.9 INC/ 195.2 AZ/  
5590 TVD

6391.01ft: MUD VIS 0.49  
6391.01ft: MUD WEIGHT 9.65

6410.01ft: ZWOB from SideKick sk-06-03-3103  
6410.66ft: Connection at 6410.8  
6410.66ft: FIX ROD WASHER ON # 2 PUMP  
6410.66ft: ZDiffPressure from SideKick

05:40 6420  
05:44 6430  
05:48 6440  
05:55 6450  
05:59 6460  
06:03 6470  
06:08 6480  
06:11 6490  
06:15 6500  
06:33 6510  
06:45 6520  
07:00 6530  
07:14 6540  
07:22 6550  
07:26 6560  
07:30 6570  
07:35 6580  
07:39 6590  
07:55 6600  
08:08 6610  
08:19 6620  
08:28 6630



6439.60ft: PUMP 2 BACK ON HOLE  
6443.01ft: ZDiffPressure from SideKick  
sk-06-03-3103

6453.05ft: PUMP SWEEP

6499.44ft: Connection at 6502.1  
6502.00ft: IN TALLY: HOLE DEPTH SET TO  
6502.1  
6502.00ft: ZDiffPressure from SideKick  
sk-06-03-3103  
6502.13ft: SURVEY @ 6447 INC 2.0 AZI 212.1  
SLIDING

6524.02ft: MUD VIS 0.46  
6524.02ft: MUD WEIGHT 9.70

6543.04ft: ROTATING

6590.68ft: Connection at 6593.7  
6593.70ft: IN TALLY: HOLE DEPTH SET TO  
6593.7  
6593.70ft: SLIDING  
6599.02ft: MUD VIS 0.44  
6599.02ft: MUD WEIGHT 9.80

6635.04ft: ROTATING

6635.04ft: ROTATING

08:37 6640

08:40 6650

08:43 6660

08:47 6670

08:52 6680

09:03 6690

09:06 6700

09:09 6710

09:12 6720

09:15 6730

09:19 6740

09:23 6750

09:26 6760

09:30 6770

09:42 6780

09:45 6790

09:48 6800

09:51 6810

09:54 6820

09:59 6830

10:02 6840

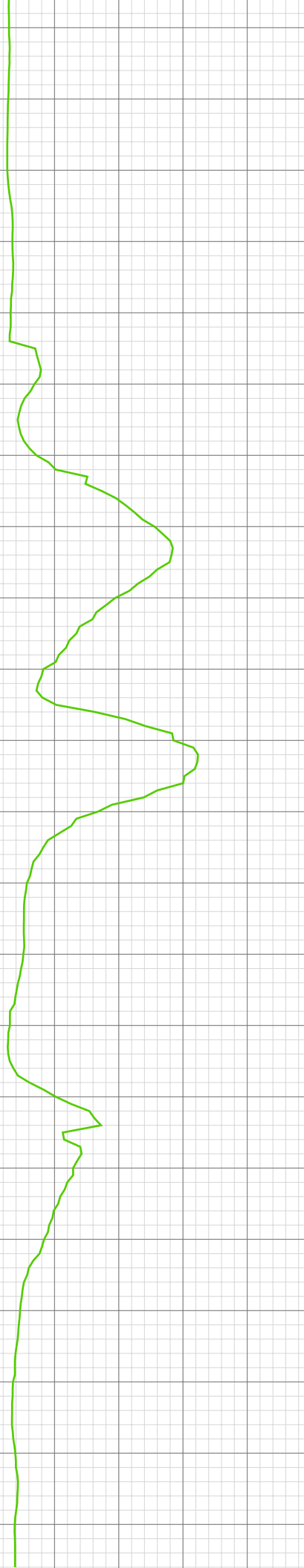
10:06 6850

6664.47ft: PUMP SWEEP

6681.00ft: MUD VIS 0.46  
6681.00ft: MUD WEIGHT 9.80  
6683.99ft: IN TALLY: HOLE DEPTH SET TO 6684.9  
6684.84ft: Connection at 6684.9  
6684.91ft: SURVEY @ 6629 INC 2.8 AZI 154.3  
TVD 5955.62  
6684.91ft: ROTATING

6776.54ft: SURVEY @ 6721 INC 3.0 AZI 153.2  
TVD 6047.50 ROTATING  
6777.00ft: IN TALLY: HOLE DEPTH SET TO 6776.5  
6777.20ft: Connection at 6776.5

6837.01ft: MUD VIS 0.45  
6837.01ft: MUD WEIGHT 9.80



10:10 6860  
10:20 6870  
10:23 6880  
10:27 6890  
10:30 6900  
10:34 6910  
10:38 6920  
10:42 6930  
10:46 6940  
10:49 6950  
11:01 6960  
11:04 6970  
11:08 6980  
11:12 6990  
11:16 7000  
11:27 7010  
11:39 7020  
11:50 7030  
12:02 7040  
12:23 7050  
12:37 7060  
12:51 7070



6868.01ft: IN TALLY: HOLE DEPTH SET TO  
6868.1  
6868.08ft: SURVEY @ 6813 INC 2.5 AZI 157.3  
TVD 6139.4 ROTATING

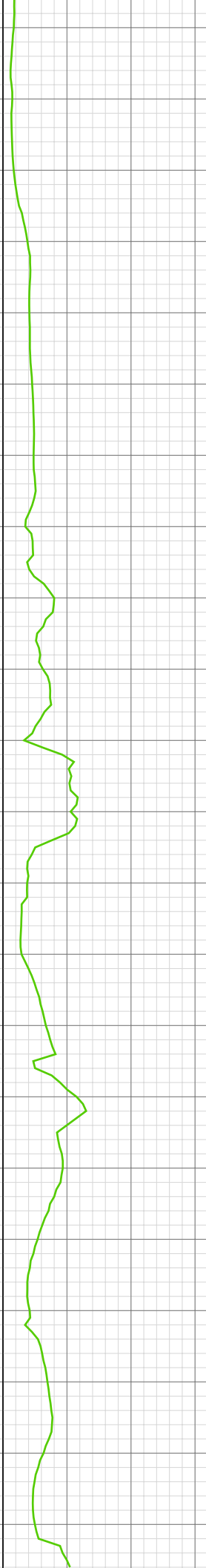
6957.64ft: Connection at 6959.7  
6958.99ft: IN TALLY: HOLE DEPTH SET TO  
6959.7  
6958.99ft: MUD VIS 0.47  
6958.99ft: MUD WEIGHT 9.90  
6959.68ft: SURVEY @ 6904 INC 2.4 AZI 174.5  
TVD 6230.31 ROTATING

7004.95ft: SLIDING

7025.00ft: MUD WEIGHT 10.00  
7025.26ft: MUD VIS 0.46

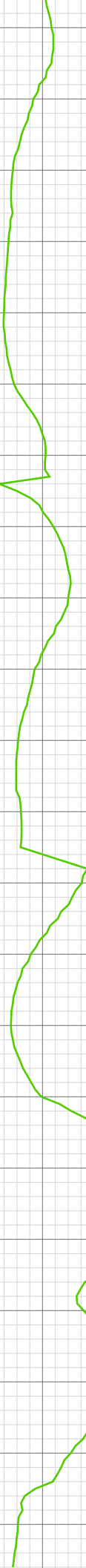
7049.02ft: IN TALLY: HOLE DEPTH SET TO  
7051.0  
7049.74ft: Connection at 7051.0  
7051.02ft: SURVEY @ 6996 INC 2.9 AZI 184.1  
SLIDING  
7052.99ft: 021TGAS 03090394 SW0.27 HW25.00  
- 163 days on

13:08 7080  
13:20 7090  
13:28 7100  
13:31 7110  
13:35 7120  
13:40 7130  
13:45 7140  
14:09 7150  
14:27 7160  
14:45 7170  
15:04 7180  
15:19 7190  
15:34 7200  
15:46 7210  
15:50 7220  
15:54 7230  
16:31 7240  
16:34 7250  
16:38 7260  
16:43 7270  
16:47 7280  
16:50 7290



7081.00ft: MUD VIS 0.46  
7081.00ft: MUD WEIGHT 10.00  
  
7091.21ft: ROTATING  
  
  
  
  
7141.17ft: Connection at 7142.6  
7141.99ft: IN TALLY: HOLE DEPTH SET TO 7142.6  
7141.99ft: ZDiffPressure from SideKick sk-06-03-3103  
7141.99ft: ZDiffPressure from SideKick sk-06-03-3103  
7142.62ft: SLIDING  
7143.57ft: SURVEY @ 7087 INZ 1.7 AZI 142.5  
7147.01ft: MUD VIS 0.46  
7147.01ft: MUD WEIGHT 10.00  
  
  
  
  
7179.00ft: MUD VIS 0.47  
7179.00ft: MUD WEIGHT 10.00  
  
  
  
  
7201.64ft: ROTATING  
  
7213.25ft: PUMP SWEEP  
  
  
7231.82ft: RIG SERVICE  
7231.99ft: IN TALLY: HOLE DEPTH SET TO 7234.2  
7231.99ft: MUD VIS 0.46  
7231.99ft: MUD WEIGHT 10.00  
7234.19ft: Connection at 7234.2  
7234.19ft: SURVEY @ 7179 INC 2.2 AZI 70.2  
TVD 6505.10 SPR  
7234.19ft: ROTATING  
  
  
  
  
7270.11ft: PUMP SWEEP  
  
  
  
  
7291.99ft: MUD WEIGHT 10.00  
7292.06ft: MUD VIS 0.46

16:56 7300  
17:00 7310  
17:04 7320  
17:22 7330  
17:25 7340  
17:29 7350  
17:33 7360  
17:37 7370  
17:41 7380  
17:44 7390  
17:47 7400  
17:51 7410  
18:08 7420  
18:14 7430  
18:19 7440  
18:22 7450  
18:26 7460  
18:30 7470  
18:35 7480  
18:39 7490  
18:43 7500  
19:00 7510



7325.00ft: IN TALLY: HOLE DEPTH SET TO 7325.7  
7325.00ft: ZDiffPressure from SideKick sk-06-03-3103  
7325.00ft: ZWOB from SideKick sk-06-03-3103  
7325.69ft: Connection at 7325.7  
7333.40ft: SURVEY @ 7270 INC 2.2 AZI 46.2 TVD 6596.04

7344.36ft: ROTATING

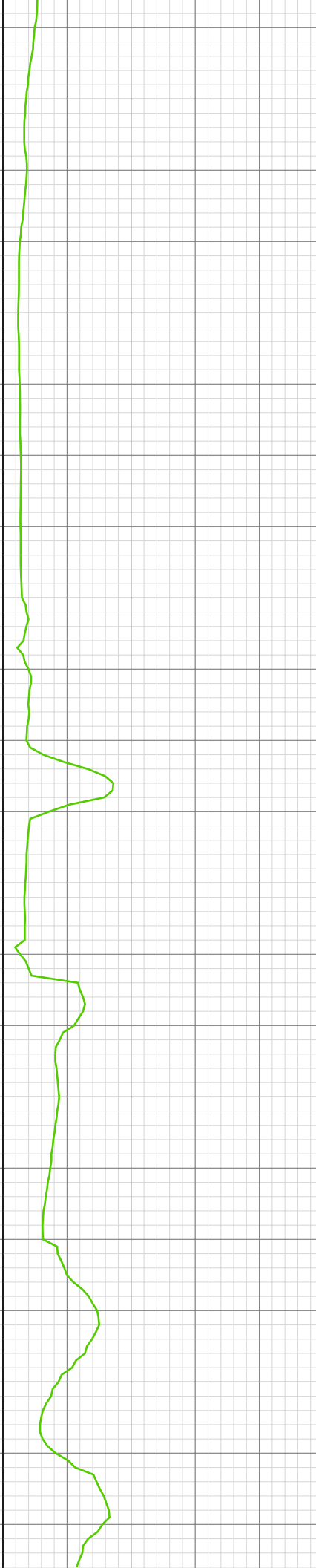
7414.99ft: IN TALLY: HOLE DEPTH SET TO 7417.2  
7414.99ft: MUD WEIGHT 10.00  
7414.99ft: ZWOB from SideKick sk-06-03-3103  
7414.99ft: ZDiffPressure from SideKick sk-06-03-3103  
7417.22ft: Connection at 7417.2  
7417.22ft: Connection at 7417.2  
7417.22ft: MUD VIS 0.44 SURVEY@7362/ 1.3 INC/ 33.5 AZ / 6688.0 TVD  
7417.52ft: ROTATING

7467.59ft: PUMP SWEEP

7481.00ft: ZERO ALL PUMPS from SideKick sk-05-05-1268

7502.76ft: SWEEP OUT OF PIPE  
7508.01ft: IN TALLY: HOLE DEPTH SET TO 7508.8  
7508.01ft: ZWOB from SideKick sk-06-03-3103  
7508.79ft: Connection at 7508.8  
7508.79ft: SURVEY@7453/ 0.8 INC/ 25.8 AZ/ 6778.9 TVD

19:05 7520  
19:11 7530  
19:16 7540  
19:20 7550  
19:25 7560  
19:30 7570  
19:35 7580  
19:39 7590  
19:43 7600  
20:23 7610  
20:39 7620  
20:58 7630  
21:02 7640  
21:06 7650  
21:14 7660  
21:19 7670  
21:24 7680  
21:29 7690  
21:45 7700  
21:50 7710  
21:55 7720  
22:00 7730



7508.79ft: ZDiffPressure from SideKick  
sk-06-03-3103

7531.99ft: MUD VIS 0.45  
7531.99ft: MUD WEIGHT 10.10

7600.00ft: IN TALLY: HOLE DEPTH SET TO  
7600.3  
7600.00ft: ZDiffPressure from SideKick  
sk-06-03-3103  
7600.30ft: Connection at 7600.3  
7600.30ft: SURVEY@7545/ 0.4 INC/ 347.0 AZ/  
6870.9 TVD  
7600.30ft: SLIDING  
7604.00ft: MUD VIS 0.46  
7604.00ft: MUD WEIGHT 10.20

7629.33ft: ROTATING  
7629.99ft: ZDiffPressure from SideKick  
sk-06-03-3103  
7630.28ft: ROTATING  
7631.99ft: ZERO ALL PUMPS from SideKick  
sk-05-05-1268  
7632.55ft: PUMP SWEEP  
7633.99ft: MUD VIS 0.46  
7633.99ft: MUD WEIGHT 10.20

7653.54ft: SWEEP OUT OF PIPE

7691.01ft: IN TALLY: HOLE DEPTH SET TO  
7691.7  
7691.01ft: ZDiffPressure from SideKick  
sk-06-03-3103  
7691.01ft: ZWOB from SideKick sk-06-03-3103  
7691.77ft: Connection at 7691.7  
7691.77ft: SURVEY@7636/ 1.3 INC/ 77.2 AZ/  
6961.9 TVD ROTATING

22:04 7740  
22:07 7750  
22:10 7760  
22:15 7770  
22:19 7780  
22:40 7790  
22:44 7800  
22:50 7810  
22:54 7820  
22:59 7830  
23:03 7840  
23:12 7850  
23:17 7860  
23:22 7870  
23:54 7880  
[Sep 12, 2010]  
00:10 7890  
00:31 7900  
00:54 7910  
01:14 7920  
01:18 7930  
01:23 7940  
01:28 7950



7748.00ft: MUD VIS 0.47  
7748.00ft: MUD WEIGHT 10.25

7783.01ft: IN TALLY: HOLE DEPTH SET TO 7783.1  
7783.01ft: PVT Horn Disabled  
7783.01ft: ZDiffPressure from SideKick sk-06-03-3103  
7783.01ft: PVT Horn Enabled  
7787.93ft: Connection at 7783.1

7800.82ft: ROTATING

7825.98ft: ZERO ALL PUMPS from SideKick sk-05-05-1268  
7831.40ft: PUMP SWEEP

7846.00ft: MUD WEIGHT 10.20  
7846.29ft: MUD VIS 0.49  
7847.97ft: SWEEP OUT OF PIPE

7874.02ft: ZDiffPressure from SideKick sk-06-03-3103  
7874.02ft: ZWOB from SideKick sk-06-03-3103  
7874.02ft: ZWOB from SideKick sk-06-03-3103  
7874.34ft: Connection at 7874.7  
7874.34ft: SURVEY@7819/ 0.4 INC/ 183.5 AZ/ 7144.9 TVD  
7874.34ft: SLIDING

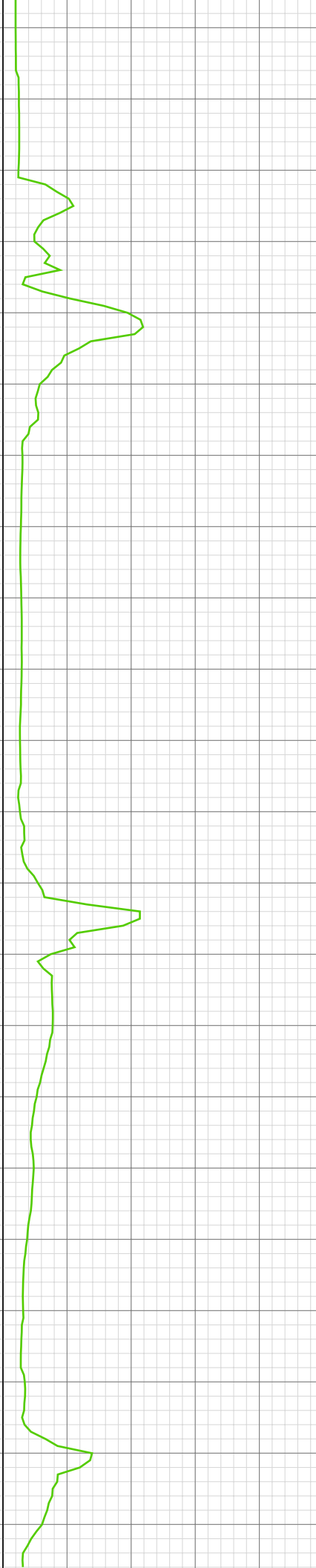
7896.00ft: MUD VIS 0.50  
7896.00ft: MUD WEIGHT 10.40

7913.48ft: ROTATING

7927.00ft: MUD VIS 0.50  
7927.46ft: MUD VIS 0.04  
7927.99ft: MUD WEIGHT 10.30

7952.99ft: ZDiffPressure from SideKick sk-06-03-3103

01:36 7960  
01:58 7970  
02:02 7980  
02:41 7990  
03:07 8000  
03:20 8010  
03:41 8020  
03:46 8030  
03:50 8040  
03:53 8050  
04:11 8060  
04:16 8070  
04:36 8080  
04:59 8090  
05:12 8100  
05:16 8110  
05:21 8120  
05:26 8130  
05:34 8140  
05:56 8150  
06:30 8160  
06:46 8170



7966.01ft: ZERO ALL PUMPS from SideKick sk-05-05-1268  
7966.01ft: ZWOB from SideKick sk-06-03-3103  
7966.27ft: Connection at 7966.1  
7966.27ft: SURVEY@7911'/ 0.6 INC/ 205.9 AZ/ 7236.9 TVD  
7966.27ft: ZDiffPressure from SideKick sk-06-03-3103

7981.00ft: MUD VIS 0.46  
7981.00ft: MUD WEIGHT 10.30

8018.93ft: ROTATING

8052.00ft: MUD VIS 0.44  
8052.00ft: MUD WEIGHT 10.30  
8054.99ft: IN TALLY: HOLE DEPTH SET TO 8057.5  
8054.99ft: ZWOB from SideKick sk-06-03-3103  
8054.99ft: ZWOB from SideKick sk-06-03-3103  
8057.51ft: Connection at 8057.5  
8057.51ft: SURVEY@8002'/ 0.6 INC/ 139.2 AZ/ 7327.9 TVD

8073.00ft: ZDiffPressure from SideKick sk-06-03-3103  
8075.03ft: SLIDING

8089.01ft: MUD VIS 0.46  
8089.01ft: MUD WEIGHT 10.30  
8092.00ft: ZDiffPressure from SideKick sk-06-03-3103  
8092.00ft: ZWOB from SideKick sk-06-03-3103  
8092.32ft: ROTATING  
8092.32ft: PVT Horn Disabled  
8094.00ft: PVT Horn Enabled

8119.00ft: ZERO ALL PUMPS from SideKick sk-05-05-1268

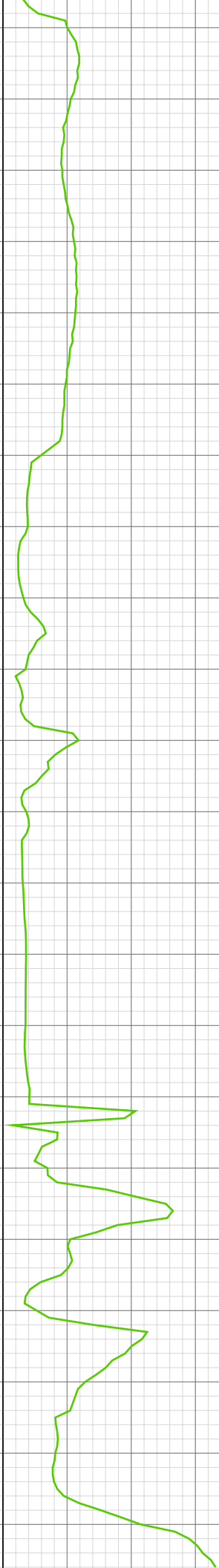
8133.07ft: PUMP SWEEP

8140.45ft: SWEEP OUT OF PIPE

8148.00ft: ZDiffPressure from SideKick sk-06-03-3103  
8148.26ft: Connection at 8149.0  
8148.26ft: SURVEY@8094'/ 0.4 INC/ 30.0 AZ/ 7419.9 TVD

8160.01ft: MUD VIS 0.49  
8160.01ft: MUD WEIGHT 10.50

07:03 8180  
07:07 8190  
07:11 8200  
07:16 8210  
07:20 8220  
07:25 8230  
07:46 8240  
08:02 8250  
08:19 8260  
08:44 8270  
09:11 8280  
09:34 8290  
09:46 8300  
09:51 8310  
09:56 8320  
10:02 8330  
10:32 8340  
10:47 8350  
11:05 8360  
11:14 8370  
11:20 8380  
11:26 8390



8178.12ft: ROTATING

8237.99ft: IN TALLY: HOLE DEPTH SET TO 8240.5  
8238.62ft: Connection at 8240.5  
8240.55ft: SLIDING  
8240.55ft: SURVEY @ 8185' / INC .8 / AZ 313.9 / TVD 7510'  
8240.55ft: SLIDING  
8246.00ft: MUD VIS 0.50  
8246.00ft: MUD WEIGHT 10.50

8273.00ft: MUD VIS 0.52  
8273.00ft: MUD WEIGHT 10.50

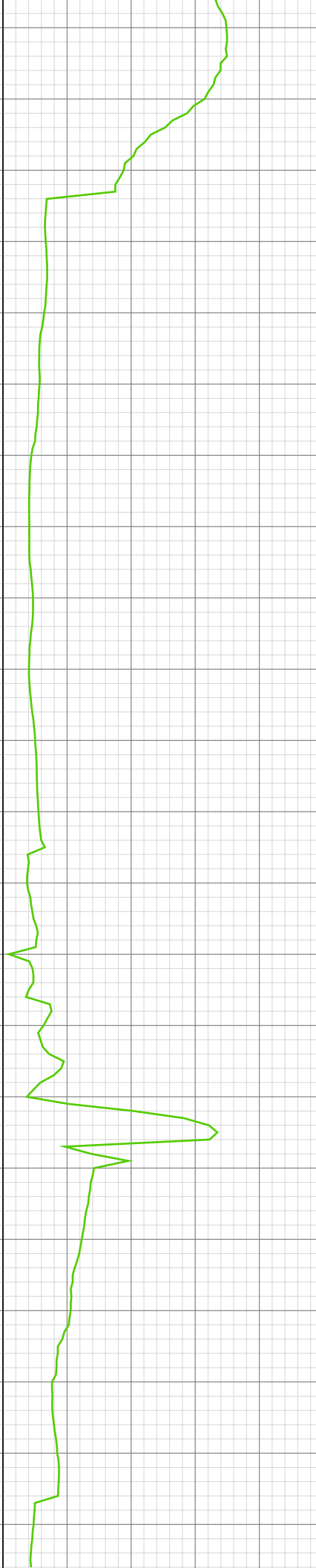
8293.83ft: ROTATING

8331.00ft: MUD VIS 0.50  
8331.00ft: MUD WEIGHT 10.55  
8331.59ft: Connection at 8331.9  
8331.92ft: IN TALLY: HOLE DEPTH SET TO 8331.9  
8331.92ft: SURVEY @ 8276 INC 1.7 AZI 328.3 TVD 7601.91 SLIDING

8343.01ft: ZDiffPressure from SideKick sk-06-03-3103

8362.01ft: ZDIFF from DHC  
8362.01ft: MUD VIS 0.53  
8362.01ft: MUD WEIGHT 10.50  
8362.50ft: ROTATING

11:29 8400  
11:33 8410  
11:37 8420  
11:56 8430  
11:59 8440  
12:04 8450  
12:08 8460  
12:11 8470  
12:16 8480  
12:20 8490  
12:23 8500  
12:28 8510  
12:50 8520  
13:11 8530  
13:39 8540  
13:52 8550  
14:07 8560  
14:12 8570  
14:17 8580  
14:23 8590  
14:27 8600  
14:43 8610



8400.00ft: MUD VIS 0.54  
8400.00ft: MUD WEIGHT 10.50

8423.00ft: IN TALLY: HOLE DEPTH SET TO 8423.4  
8423.36ft: SURVEY @ 8368 INC 2.0 AZI 358.6 TVD 7693.86 ROTATING  
8423.62ft: Connection at 8423.4

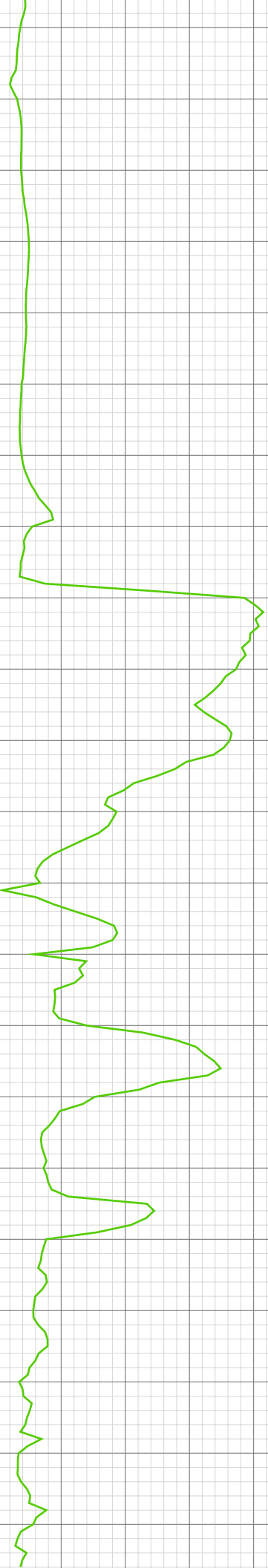
8500.98ft: 021TGAS 03090394 SW0.27 HW25.00 - 164 days on

8514.63ft: Connection at 8514.7  
8514.73ft: SURVEY @ 8439 INC 1.9 AZI 327.6 TVD 7764.82 SLIDING  
8514.99ft: IN TALLY: HOLE DEPTH SET TO 8514.7  
8517.00ft: MUD VIS 0.46  
8517.00ft: MUD WEIGHT 10.50

8558.99ft: MUD VIS 0.46  
8559.71ft: ROTATING

8606.20ft: IN TALLY: HOLE DEPTH SET TO 8606.2 Connection at 8606.2  
8606.20ft: SURVEY @ 8551 INC 1.8 AZI 304.2 TVD 7876.77 ROTATING

14:48 8620  
14:54 8630  
14:59 8640  
15:03 8650  
15:08 8660  
15:13 8670  
15:17 8680  
15:22 8690  
15:49 8700  
16:01 8710  
16:18 8720  
16:31 8730  
16:44 8740  
16:57 8750  
17:19 8760  
17:34 8770  
17:48 8780  
18:21 8790  
18:36 8800  
18:57 8810  
19:51 8820  
20:34 8830



8639.99ft: MUD VIS 0.53  
8641.01ft: MUD WEIGHT 10.55

8697.01ft: IN TALLY: HOLE DEPTH SET TO  
8697.7  
8697.61ft: Connection at 8697.7  
8697.67ft: SPR  
8697.67ft: SURVEY @ 8642 INC 2.8 AZI 275.4  
TVD 7967.69 SLIDING  
8700.00ft: MUD VIS 0.45  
8700.00ft: MUD WEIGHT 10.50

8747.01ft: MUD VIS 0.55  
8748.00ft: MUD WEIGHT 10.50  
8750.33ft: ROTATING  
8750.33ft: SLOW FOR FORMATION CHANGE

8787.99ft: IN TALLY: HOLE DEPTH SET TO  
8789.2  
8789.01ft: MUD VIS 0.43  
8789.01ft: MUD WEIGHT 10.50  
8789.01ft: PVT Horn Disabled  
8789.01ft: ZDiffPressure from SideKick  
sk-06-03-3103  
8789.01ft: ZWOB from SideKick sk-06-03-3103  
8789.21ft: Connection at 8789.2  
8789.21ft: SURVEY@8734'/ 2.2 INC/ 243.6 AZ/  
8059.6 TVD

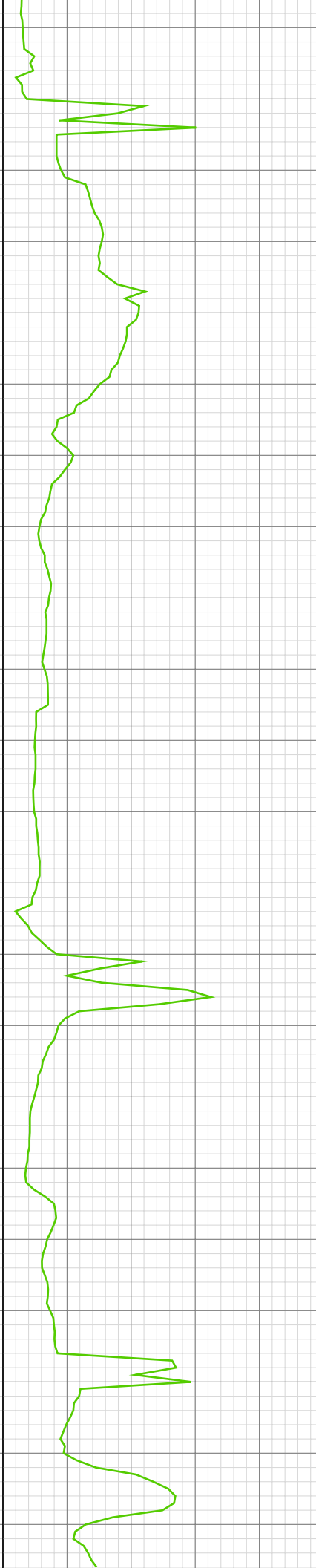
8808.01ft: ZDIFF from DHC  
8808.79ft: CLEAN SKREENS ON PUMPS  
8808.79ft: SLIDING  
8812.01ft: PVT Horn Enabled  
8812.99ft: MUD VIS 0.53  
8812.99ft: MUD WEIGHT 1.03  
8812.99ft: MUD WEIGHT 10.50  
8817.00ft: ZDiffPressure from SideKick  
sk-06-03-3103  
8817.19ft: RUN 1 PUMP FOR EM TOOL SIGNAL  
8818.96ft: HAVE TO WAIT ON FIXING OF  
ANTANEA CABLE THATS DAMAGED  
8818.96ft: SLIDING

20:59 8840  
21:14 8850  
21:39 8860  
21:46 8870  
22:08 8880  
22:26 8890  
22:45 8900  
23:02 8910  
23:23 8920  
23:29 8930  
23:33 8940  
23:36 8950  
23:40 8960  
23:45 8970  
[Sep 13, 2010]  
00:37 8980  
01:08 8990  
01:34 9000  
01:49 9010  
01:54 9020  
02:00 9030  
02:05 9040  
02:09 9050



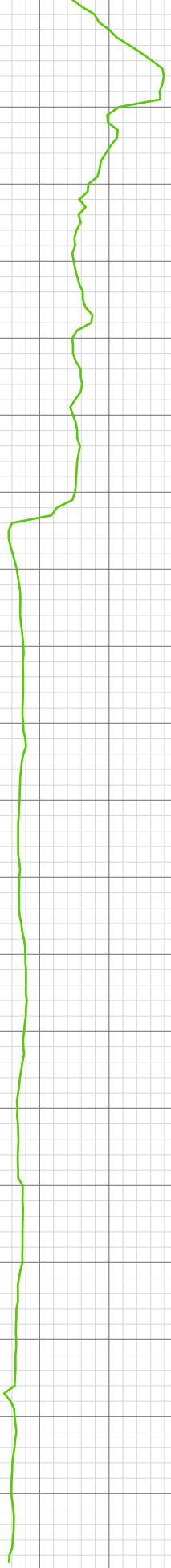
8845.01ft: MUD WEIGHT 10.60  
8845.08ft: MUD VIS 0.50  
  
8854.00ft: ZWOB from SideKick sk-06-03-3103  
8854.40ft: ZDiffPressure from SideKick sk-06-03-3103  
8856.40ft: ROTATING  
8858.01ft: ZERO ALL PUMPS from SideKick sk-05-05-1268  
  
8879.99ft: IN TALLY: HOLE DEPTH SET TO 8880.7  
8879.99ft: ZDiffPressure from SideKick sk-06-03-3103  
8880.74ft: Connection at 8880.7  
8880.74ft: SURVEY@8825/ 2.4 INC/ 229.6 AZ/ 8150.5 TVD  
8880.74ft: PVT Horn Disabled  
8880.74ft: SLIDING  
8881.99ft: MUD VIS 0.45  
8881.99ft: MUD WEIGHT 10.55  
8883.99ft: PVT Horn Enabled  
  
8906.99ft: MUD VIS 0.50  
8906.99ft: MUD WEIGHT 10.50  
  
8918.01ft: ROTATING  
  
8972.15ft: SURVEY@8917/ 2.6 INC/ 211.5 AZ/ 8242.4 TVD  
8972.51ft: CHECKSHOT  
8973.00ft: IN TALLY: HOLE DEPTH SET TO 8972.1  
8973.00ft: PVT Horn Disabled  
8973.00ft: ZDiffPressure from SideKick sk-06-03-3103  
8974.71ft: Connection at 8972.1 SLIDING  
8980.51ft: VIS 48 WT 10.55  
  
8991.01ft: MUD VIS 0.45  
8991.01ft: MUD WEIGHT 10.50  
8992.00ft: ZDiffPressure from SideKick sk-06-03-3103  
8992.00ft: ZWOB from SideKick sk-06-03-3103  
8992.09ft: ROTATING  
  
9006.99ft: PVT Horn Enabled  
9008.27ft: ROTATING  
  
9027.99ft: ZERO ALL PUMPS from SideKick sk-05-05-1268  
  
9054.00ft: MUD VIS 0.45  
9054.00ft: MUD WEIGHT 10.50  
9062.99ft: IN TALLY: HOLE DEPTH SET TO

02:17 9060  
03:11 9070  
03:57 9080  
04:04 9090  
04:16 9100  
04:21 9110  
04:28 9120  
04:39 9130  
04:45 9140  
04:50 9150  
05:17 9160  
05:25 9170  
05:45 9180  
06:06 9190  
06:47 9200  
06:55 9210  
07:01 9220  
07:12 9230  
07:17 9240  
07:51 9250  
08:08 9260  
08:17 9270



9063.7  
9062.99ft: PVT Horn Disabled  
9062.99ft: ZDiffPressure from SideKick  
sk-06-03-3103  
9063.68ft: Connection at 9063.7  
9063.68ft: SURVEY@9008/ 2.6 INC/ 211.9 AZ/  
8333.3 TVD  
9068.01ft: MUD VIS 0.56  
9068.01ft: MUD WEIGHT 10.60  
9068.60ft: SLIDING  
9074.02ft: ZDiffPressure from SideKick  
sk-06-03-3103  
9074.02ft: ZDiffPressure from SideKick  
sk-06-03-3103  
9074.02ft: ZDiffPressure from SideKick  
sk-06-03-3103  
9074.64ft: ROTATING  
9079.00ft: PVT Horn Enabled  
9090.91ft: CLEAN SKREENS ON PUMPS  
  
9154.99ft: IN TALLY: HOLE DEPTH SET TO  
9155.0  
9154.99ft: Connection at 9155.0  
9154.99ft: SURVEY@9099/ 2.5 INC/ 215 AZ/  
8424.2 TVD  
9154.99ft: ZWOB from SideKick sk-06-03-3103  
9154.99ft: ZDiffPressure from SideKick  
sk-06-03-3103  
9162.83ft: PUMP SWEEP  
9167.00ft: ZERO ALL PUMPS from SideKick  
sk-05-05-1268  
9170.01ft: ZDiffPressure from SideKick  
sk-06-03-3103  
9170.74ft: CLEAN CKREEN  
9187.99ft: MUD VIS 0.50  
9187.99ft: MUD WEIGHT 10.60  
9189.63ft: CHECKSHOT  
9189.63ft: SLIDING  
9195.01ft: ZDiffPressure from SideKick  
sk-06-03-3103  
9196.00ft: ZDiffPressure from SideKick  
sk-06-03-3103  
9196.00ft: MUD VIS 0.43  
9196.00ft: MUD WEIGHT 10.60  
9245.01ft: IN TALLY: HOLE DEPTH SET TO  
9246.5  
9246.00ft: Connection at 9246.5  
9246.00ft: ZDiffPressure from SideKick  
sk-06-03-3103  
9246.56ft: SURVEY 9191 INC 2.7 AZI 218.4 TVD  
8516.17  
9246.56ft: SLIDING  
9251.02ft: ROTATING  
9254.99ft: MUD VIS 0.47  
9256.23ft: MUD WEIGHT 10.60  
9333.99ft: MUD VIS 0.47  
9335.01ft: MUD WEIGHT 10.60  
9335.99ft: Connection at 9338.1  
9335.99ft: IN TALLY: HOLE DEPTH SET TO  
9338.1  
9341.96ft: SURVEY @ 9283 INC 3.2 AZI 222.7  
TVD 8608.05  
9356.66ft: ROTATING  
9428.71ft: Connection at 9429.6  
9429.00ft: MUD VIS 0.56  
9429.00ft: MUD WEIGHT 10.70  
9429.63ft: IN TALLY: HOLE DEPTH SET TO  
9429.6  
9429.66ft: ROTATING  
9429.66ft: SURVEY @ 9374 INC 3.6 AZI 234.3  
TVD 8698.89  
9479.00ft: MUD VIS 0.55  
9479.00ft: MUD WEIGHT 10.85  
9479.99ft: 021TGAS 03090394 SW0.27 HW25.00  
- 165 days on  
9479.99ft: MUD VIS 0.45  
9479.99ft: MUD WEIGHT 11.00  
9479.99ft: PVT Horn Disabled  
9479.99ft: TRANSFERRED 0.80  
9479.99ft: MUD VIS 0.52  
9479.99ft: MUD WEIGHT 11.00  
9479.99ft: TRANSFERRED 0.80  
9479.99ft: ZERO ALL PUMPS from SideKick  
sk-06-03-3103  
9479.99ft: ZERO ALL PUMPS from SideKick  
sk-06-03-3103  
9479.99ft: MUD VIS 0.48  
9479.99ft: MUD WEIGHT 11.05  
9479.99ft: ZDIFF from DHC  
9479.99ft: ZWOB from DHC  
9479.99ft: PVT Horn Enabled

08:22 9280  
08:26 9290  
08:30 9300  
08:36 9310  
08:41 9320  
08:51 9330  
09:14 9340  
09:17 9350  
09:21 9360  
09:26 9370  
09:31 9380  
09:37 9390  
09:41 9400  
09:47 9410  
09:53 9420  
10:12 9430  
10:18 9440  
10:24 9450  
10:31 9460  
10:40 9470  
09:26 9480  
03:26 9490



9479.99ft: PVT Horn Enabled  
9479.99ft: MUD VIS 0.54  
9479.99ft: MUD WEIGHT 11.00  
9479.99ft: PVT Horn Disabled  
9479.99ft: MUD WEIGHT 11.10  
9479.99ft: ZERO ALL PUMPS from SideKick  
sk-06-03-3103  
9479.99ft: ZERO ALL PUMPS from SideKick  
sk-06-03-3103  
9479.99ft: ZERO ALL PUMPS from SideKick  
sk-06-03-3103  
9479.99ft: MUD VIS 0.54  
9479.99ft: MUD WEIGHT 11.00  
9479.99ft: ZDiffPressure from SideKick  
sk-06-03-3103  
9479.99ft: ZWOB from SideKick sk-06-03-3103  
9479.99ft: BIT DEPTH CHANGED TO 9429.0  
FEET  
9479.99ft: PUMP SWEEP  
9479.99ft: ZERO ALL PUMPS from SideKick  
sk-06-03-3103  
9479.99ft: ZERO ALL PUMPS from SideKick  
sk-05-05-1268  
9479.99ft: MUD VIS 0.59  
9479.99ft: MUD WEIGHT 11.00  
9479.99ft: PVT Horn Enabled  
9479.99ft: MUD VIS 0.54  
9479.99ft: MUD WEIGHT 11.00  
9479.99ft: MUD VIS 55.00  
9479.99ft: MUD WEIGHT 11.00  
9479.99ft: ZERO ALL PUMPS from SideKick  
sk-06-03-3103  
9479.99ft: PUMP OUT CELLAR  
9479.99ft: HGAS\_031: Hazardous Gas Alarm  
System not approved in billing system  
9479.99ft: BIT DEPTH CHANGED TO 799.6 FEET  
9479.99ft: BIT DEPTH CHANGED TO 1317.3  
FEET  
9479.99ft: ZERO ALL PUMPS from SideKick  
sk-06-03-3103  
9479.99ft: ZERO ALL PUMPS from SideKick  
sk-06-03-3103  
9479.99ft: BIT DEPTH CHANGED TO 3323.0  
FEET  
9479.99ft: PVT Horn Enabled  
9479.99ft: PVT Horn Disabled  
9479.99ft: ZERO ALL PUMPS from SideKick  
sk-06-03-3103  
9479.99ft: ZERO ALL PUMPS from SideKick  
sk-06-03-3103  
9479.99ft: PVT Horn Disabled  
9479.99ft: BIT DEPTH CHANGED TO 7223.0  
FEET  
9479.99ft: ZERO ALL PUMPS from SideKick  
sk-06-03-3103  
9479.99ft: MUD VIS 0.53  
9479.99ft: MUD WEIGHT 11.10  
9479.99ft: ZERO ALL PUMPS from SideKick  
sk-06-03-3103  
9479.99ft: ZERO ALL PUMPS from SideKick  
sk-06-03-3103  
9479.99ft: ZERO ALL PUMPS from SideKick  
sk-06-03-3103  
9479.99ft: ZERO ALL PUMPS from SideKick  
sk-06-03-3103  
9479.99ft: PVT Horn Enabled  
9479.99ft: MUD VIS 0.48  
9479.99ft: MUD WEIGHT 11.00  
9479.99ft: 012TGAS-Analyzer air pressure low,  
check air supply. Standby  
9479.99ft: 022TGAS-Trap needs service  
9479.99ft: 021TGAS 03090394 SW0.27 HW25.00  
- 167 days on  
9480.02ft: "TD"  
9480.02ft: SURVEY @ 9425 INC 3.9 AZI 236.1  
TVD 8749.78  
9480.02ft: FLOW CHECK  
9480.02ft: MS Gas detector moved to Production  
Tanks for Air Safety Analysis  
9480.02ft: FLOW CHECK  
9480.02ft: NO FLOW  
9480.02ft: MS Gas Detector moved to "fresh air"  
for Air Safety Analysis  
9480.02ft: TRANS MUD  
9480.02ft: STAND 61 1/2 DOWN, WASH  
9480.02ft: STAND 62 WASH  
9480.02ft: STAND 78 WASH DWN  
9480.02ft: CIRCULATE BU@ 8149  
9480.02ft: MUD VIS 0.54  
9480.02ft: VIS 53 WT 11.00  
9480.02ft: PUMP OUT CELLAR  
9480.02ft: TRIP IN HOLE  
9480.02ft: FLOW CHECK  
9480.02ft: PUMP CELLER. NO FLOW  
9480.02ft: FILL PIPE  
9480.18ft: FILL PILL TANK  
9480.18ft: PVT Horn Disabled  
9480.18ft: FILL PILL TANK  
9480.18ft: FLOW CHECK  
9480.18ft: NO FLOW  
9480.18ft: FLOW CHECK  
9480.18ft: NO FLOW  
9480.18ft: FLOW CHECK  
9480.18ft: NO FLOW  
9480.18ft: FLOW CHECK  
9480.18ft: NO FLOW  
9480.18ft: START TO RUN @ 2:45

Sep 14, 2010

03:27 9500

03:27 9510

9520

9530

9480.18ft: START TO RUN @ 2:45  
9480.18ft: START VOLUME bbl  
9480.18ft: START TO RUN CASING @ 14:45  
9480.18ft: START STOP RINGS  
9480.18ft: BIT DEPTH CHANGED TO 4639.0  
FEET  
9480.18ft: CIRCULATE BU @5931  
9480.18ft: CIRCULATE BU @ 7223  
9480.18ft: ZERO ALL PUMPS from SideKick  
sk-06-03-3103  
9480.18ft: FILL PILL TANK  
9480.18ft: CIRCULATE BU @ 8213  
9480.18ft: CIRCULATE @9203  
9480.18ft: PUMP OUT CELLAR  
9480.18ft: ZERO ALL PUMPS from SideKick  
sk-06-03-3103  
9480.18ft: RD CASING CREW  
9480.18ft: 046TGAS-Analyzer air pressure = zero,  
check air supply. Standby  
9520.01ft: BIT DEPTH CHANGED TO 9429.0  
FEET  
9520.01ft: HOLE DEPTH CHANGED TO 9480.0  
FEET