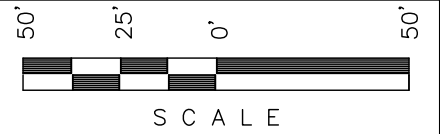


Encana OIL & GAS (USA) INC.

ADDENDUM TO LEGAL PLAT FOR

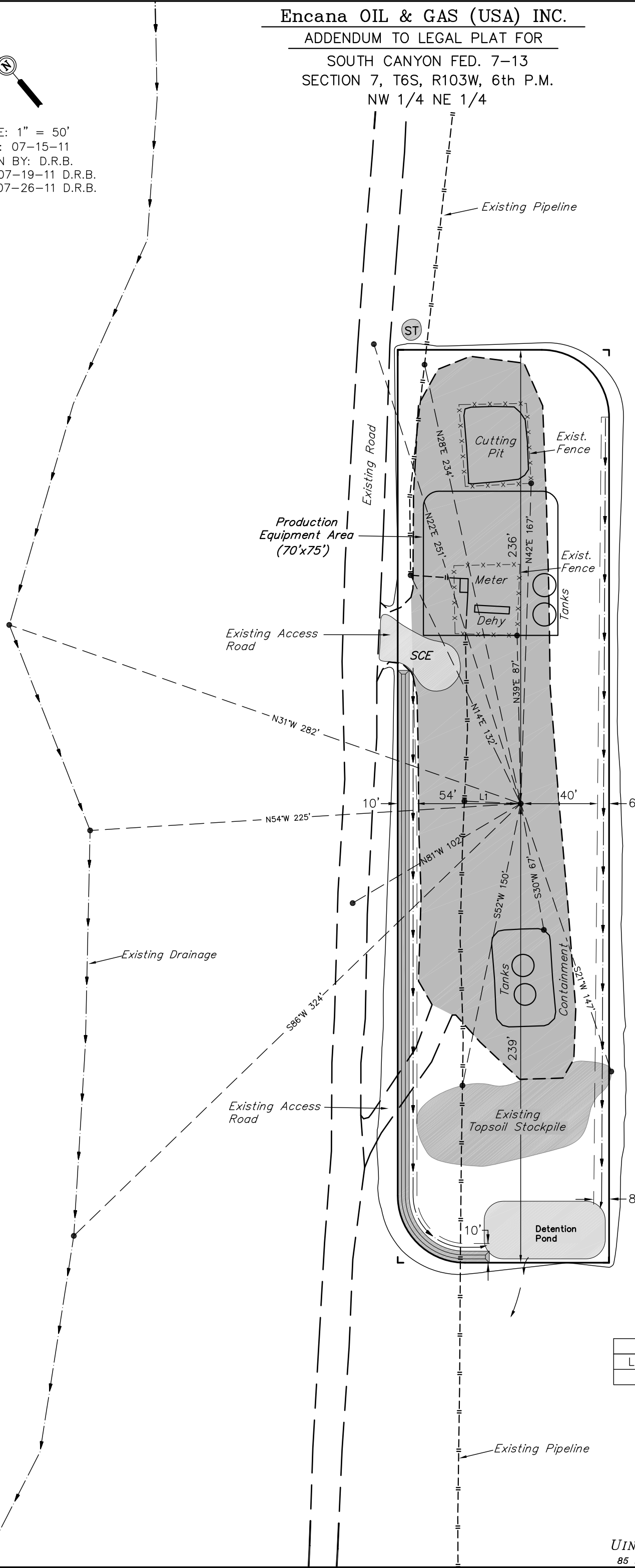
SOUTH CANYON FED. 7-13
SECTION 7, T6S, R103W, 6th P.M.
NW 1/4 NE 1/4



SCALE

Sheet 1b of 11

SCALE: 1" = 50'
DATE: 07-15-11
DRAWN BY: D.R.B.
Revised: 07-19-11 D.R.B.
Revised: 07-26-11 D.R.B.

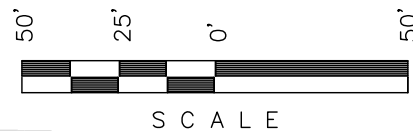


SWMP LEGEND:
SCE - STABILIZED CONSTRUCTION ENTRANCE
ST - SEDIMENT TRAP

LINE TABLE		
LINE	BEARING	LENGTH
L1	N47°32'26"W	29.34'

Encana OIL & GAS (USA) INC.

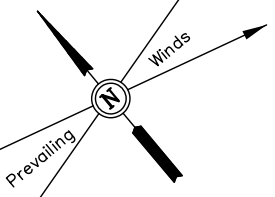
CONSTRUCTION LAYOUT FOR
SOUTH CANYON FED. 7-13
SECTION 7, T6S, R103W, 6th P.M.
NW 1/4 NE 1/4



Sheet 3 of 11



SCALE: 1" = 50'
DATE: 06-05-11
DRAWN BY: D.R.B.
Revised: 07-01-11 D.R.B.
Revised: 07-15-11 D.R.B.
Revised: 07-19-11 D.R.B.
Revised: 07-26-11 D.R.B.



DO NOT
DISTURBANCE THIS
AREA DURING
CONSTRUCTION

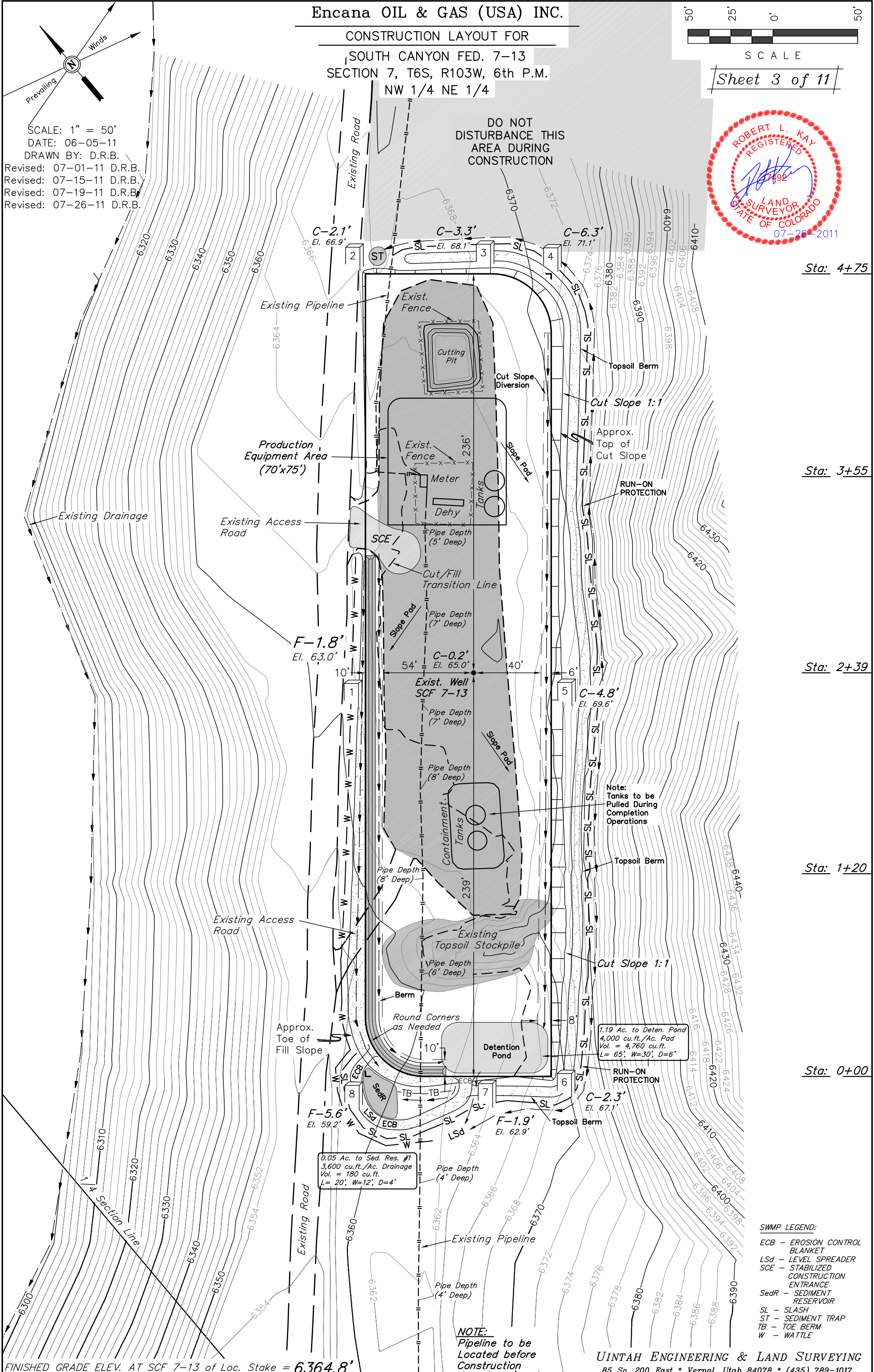
Sta: 4+75

Sta: 3+55

Sta: 2+39

Sta: 1+20

Sta: 0+00



FINISHED GRADE ELEV. AT SCF 7-13 of Loc. Stake = 6364.8'

- SWMP LEGEND:**
- ECB - EROSION CONTROL BLANKET
 - Lsd - LEVEL SPREADER
 - SCE - STABILIZED CONSTRUCTION ENTRANCE
 - SedR - SEDIMENT RESERVOIR
 - SL - SLASH
 - ST - SEDIMENT TRAP
 - TB - TOE BERM
 - W - WATTLE

UINTAH ENGINEERING & LAND SURVEYING
85 So. 200 East * Vernal, Utah 84078 * (435) 789-1017

Encana OIL & GAS (USA) INC.

PRE-CONSTRUCTION LAYOUT FOR

SOUTH CANYON FED. 7-13

SECTION 7, T6S, R103W, 6th P.M.

NW 1/4 NE 1/4

50' 25' 0' 50'

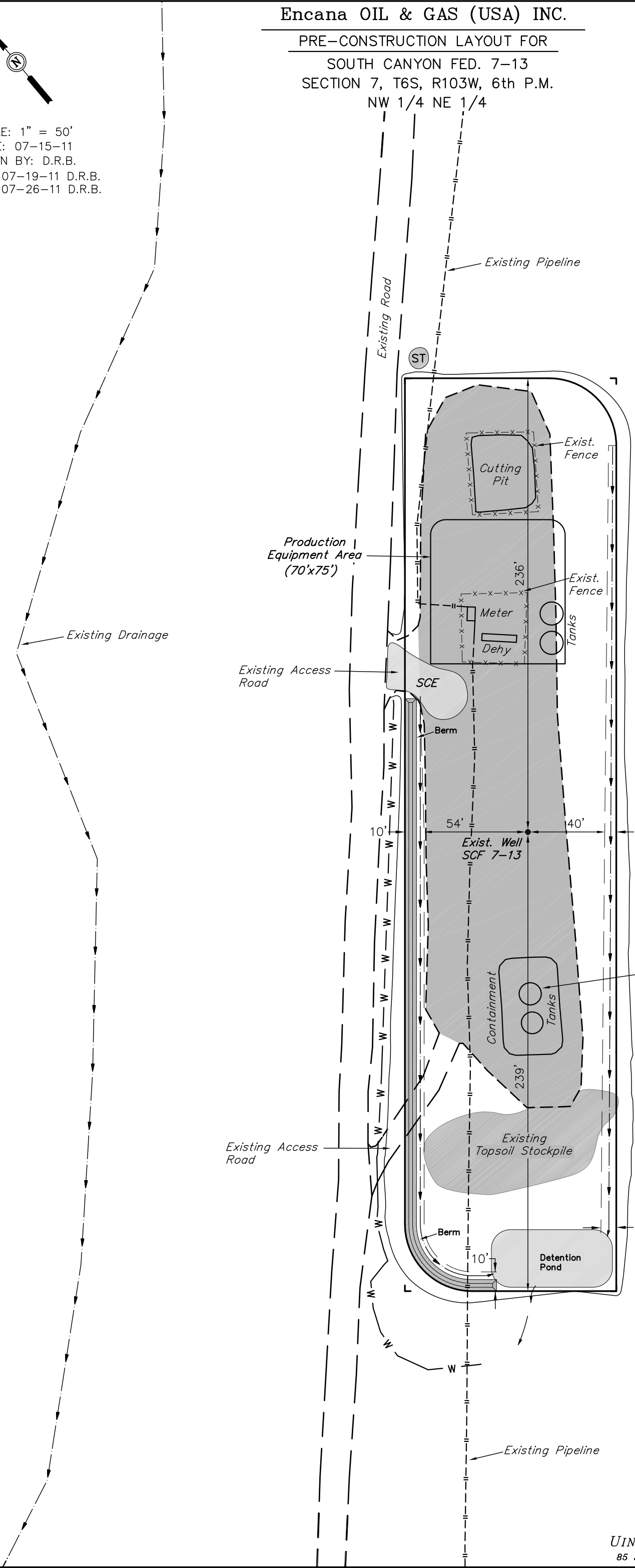


SCALE

Sheet 3a of 11



SCALE: 1" = 50'
DATE: 07-15-11
DRAWN BY: D.R.B.
Revised: 07-19-11 D.R.B.
Revised: 07-26-11 D.R.B.



Production Equipment Area (70'x75')

Existing Pipeline

Existing Drainage

Existing Access Road

ST

Cutting Pit

Exist. Fence

236'

Exist. Fence

Meter

Dehy

Tanks

SCE

Berm

10'

54'

40'

6'

Exist. Well SCF 7-13

Note: Tanks to be Pulled During Completion Operations

Containment

Tanks

239'

Existing Access Road

Existing Topsoil Stockpile

Berm

10'

Detention Pond

8'

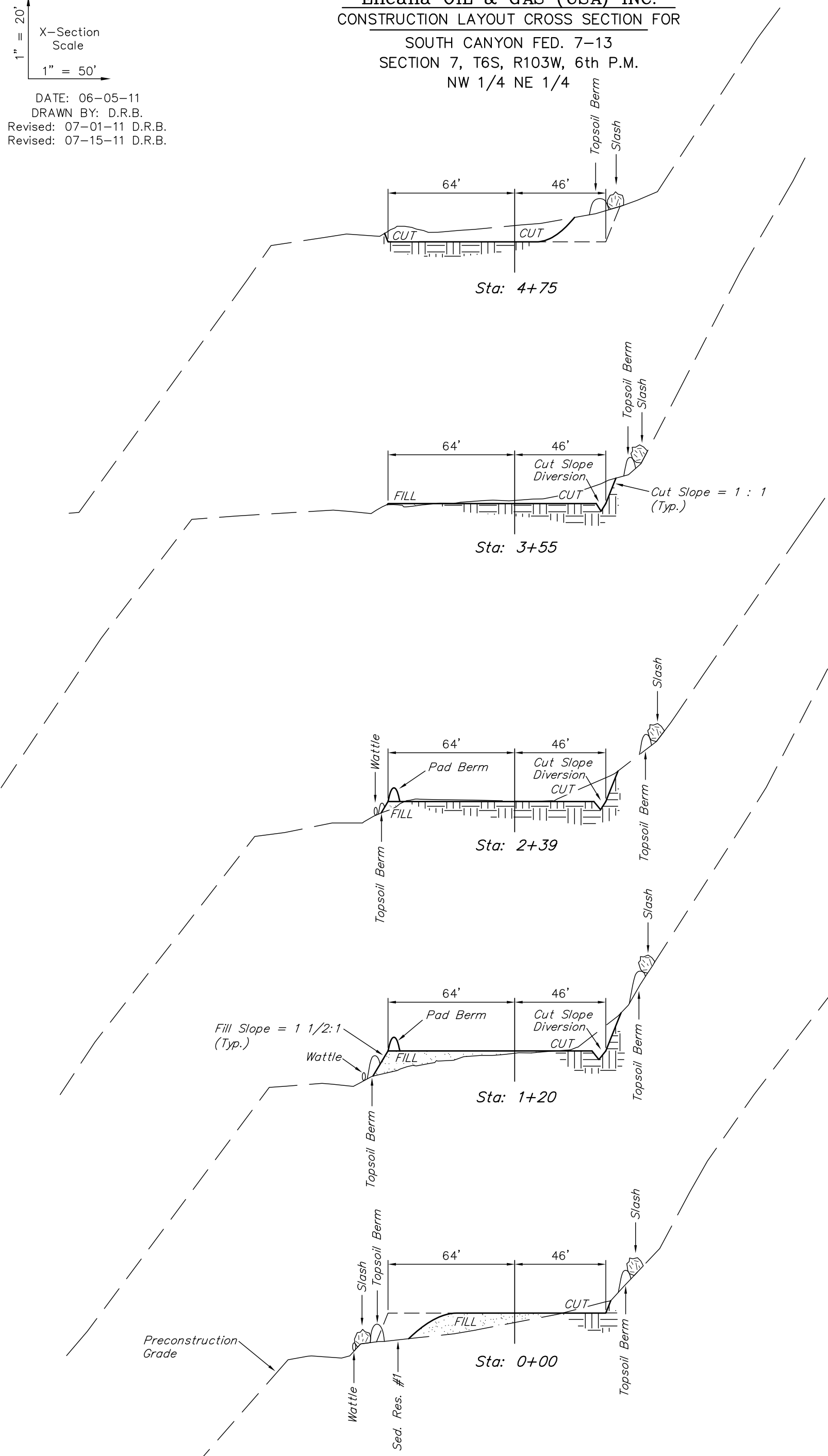
Existing Pipeline

SWMP LEGEND:
SCE - STABILIZED CONSTRUCTION ENTRANCE
ST - SEDIMENT TRAP
W - WATTLE

Encana OIL & GAS (USA) INC.
CONSTRUCTION LAYOUT CROSS SECTION FOR
 SOUTH CANYON FED. 7-13
 SECTION 7, T6S, R103W, 6th P.M.
 NW 1/4 NE 1/4

1" = 20'
 X-Section Scale
 1" = 50'

DATE: 06-05-11
 DRAWN BY: D.R.B.
 Revised: 07-01-11 D.R.B.
 Revised: 07-15-11 D.R.B.



APPROXIMATE YARDAGES

(6") Topsoil Stripping	=	590 Cu. Yds.
(New Construction Only)		
Remaining Location	=	1,800 Cu. Yds.
TOTAL CUT	=	2,390 CU.YDS.
FILL	=	1,800 CU.YDS.

EXCESS MATERIAL	=	590 Cu. Yds.
Topsoil	=	590 Cu. Yds.
EXCESS UNBALANCE	=	0 Cu. Yds.
(After Interim Rehabilitation)		

Encana OIL & GAS (USA) INC.

TYPICAL RIG LAYOUT FOR

SOUTH CANYON FED. 7-13

SECTION 7, T6S, R103W, 6th P.M.

NW 1/4 NE 1/4

50' 25' 0' 50'



SCALE

Sheet 5 of 11

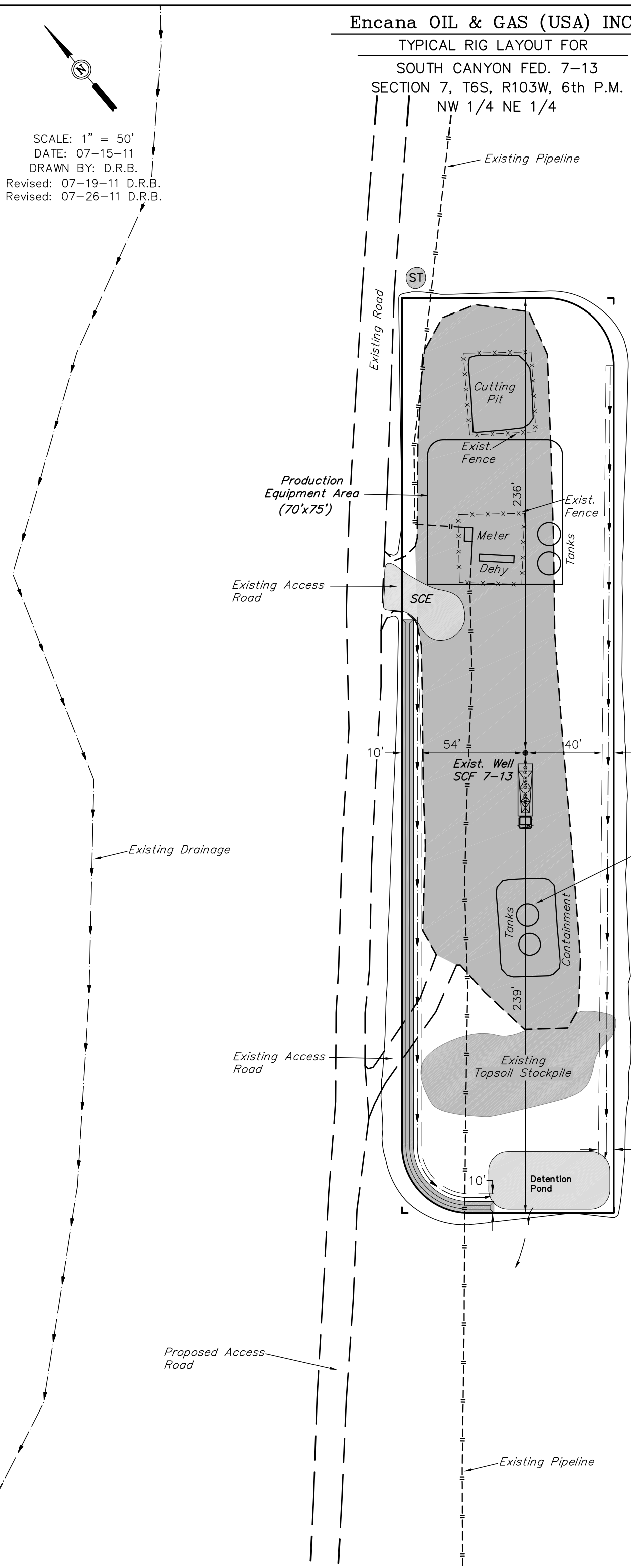
SCALE: 1" = 50'

DATE: 07-15-11

DRAWN BY: D.R.B.

Revised: 07-19-11 D.R.B.

Revised: 07-26-11 D.R.B.



Note:
Tanks to be
Pulled During
Completion
Operations

SWMP LEGEND:

- SCE - STABILIZED CONSTRUCTION ENTRANCE
- ST - SEDIMENT TRAP

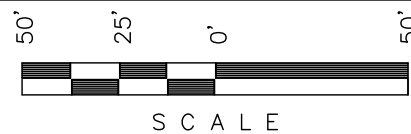
Encana OIL & GAS (USA) INC.

PRODUCTION SCHEMATIC FOR

SOUTH CANYON FED. 7-13

SECTION 7, T6S, R103W, 6th P.M.

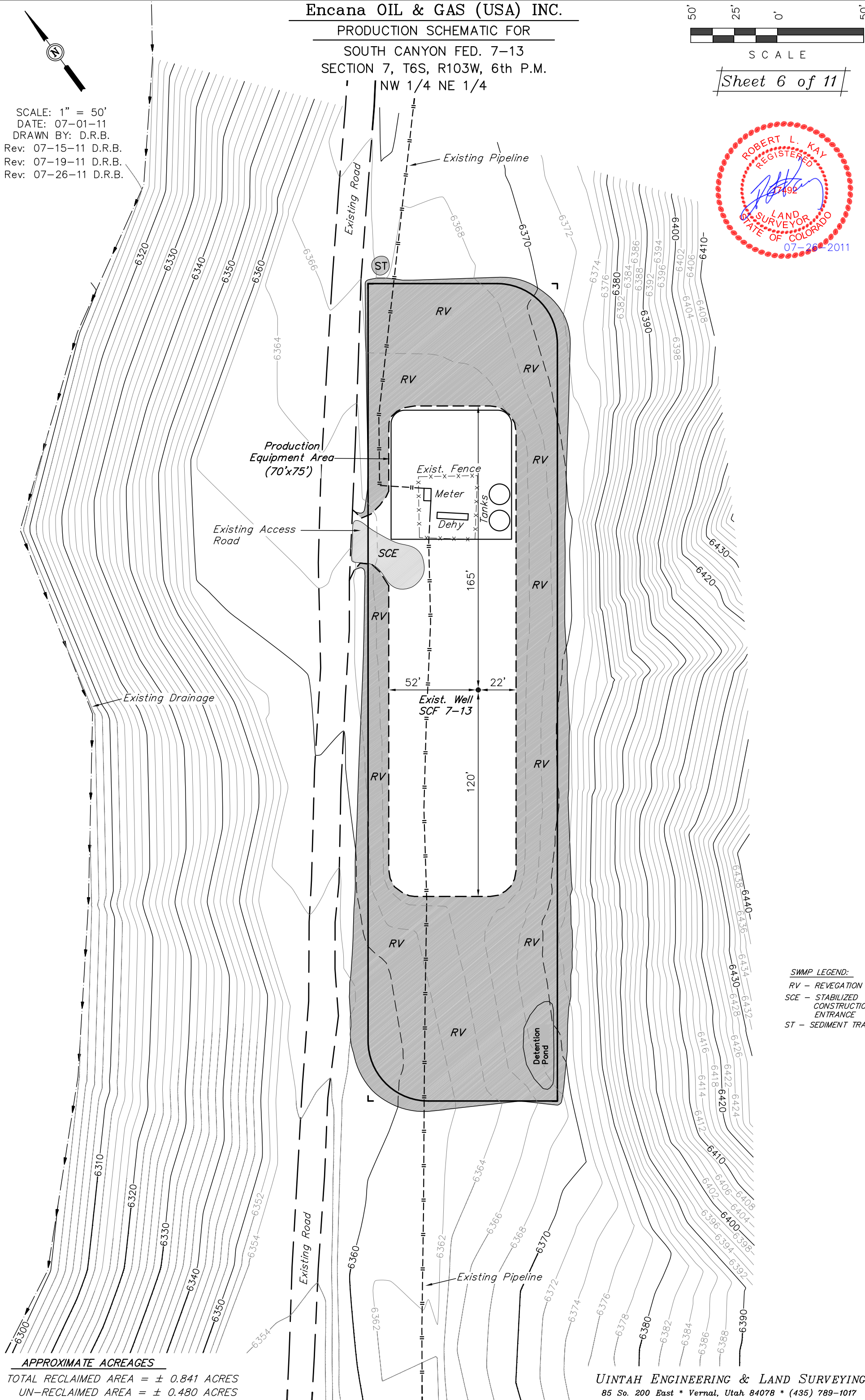
NW 1/4 NE 1/4



SCALE

Sheet 6 of 11

SCALE: 1" = 50'
 DATE: 07-01-11
 DRAWN BY: D.R.B.
 Rev: 07-15-11 D.R.B.
 Rev: 07-19-11 D.R.B.
 Rev: 07-26-11 D.R.B.



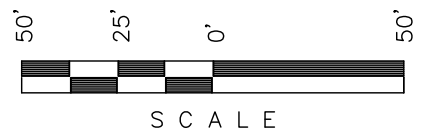
SWAMP LEGEND:
 RV - REVEGATION
 SCE - STABILIZED CONSTRUCTION ENTRANCE
 ST - SEDIMENT TRAP

APPROXIMATE ACREAGES

TOTAL RECLAIMED AREA = ± 0.841 ACRES
 UN-RECLAIMED AREA = ± 0.480 ACRES

UINTAH ENGINEERING & LAND SURVEYING
 85 So. 200 East * Vernal, Utah 84078 * (435) 789-1017

Encana OIL & GAS (USA) INC.
SURFACE DISTURBANCE AREA FOR
SOUTH CANYON FED. 7-13
SECTION 7, T6S, R103W, 6th P.M.
NW 1/4 NE 1/4

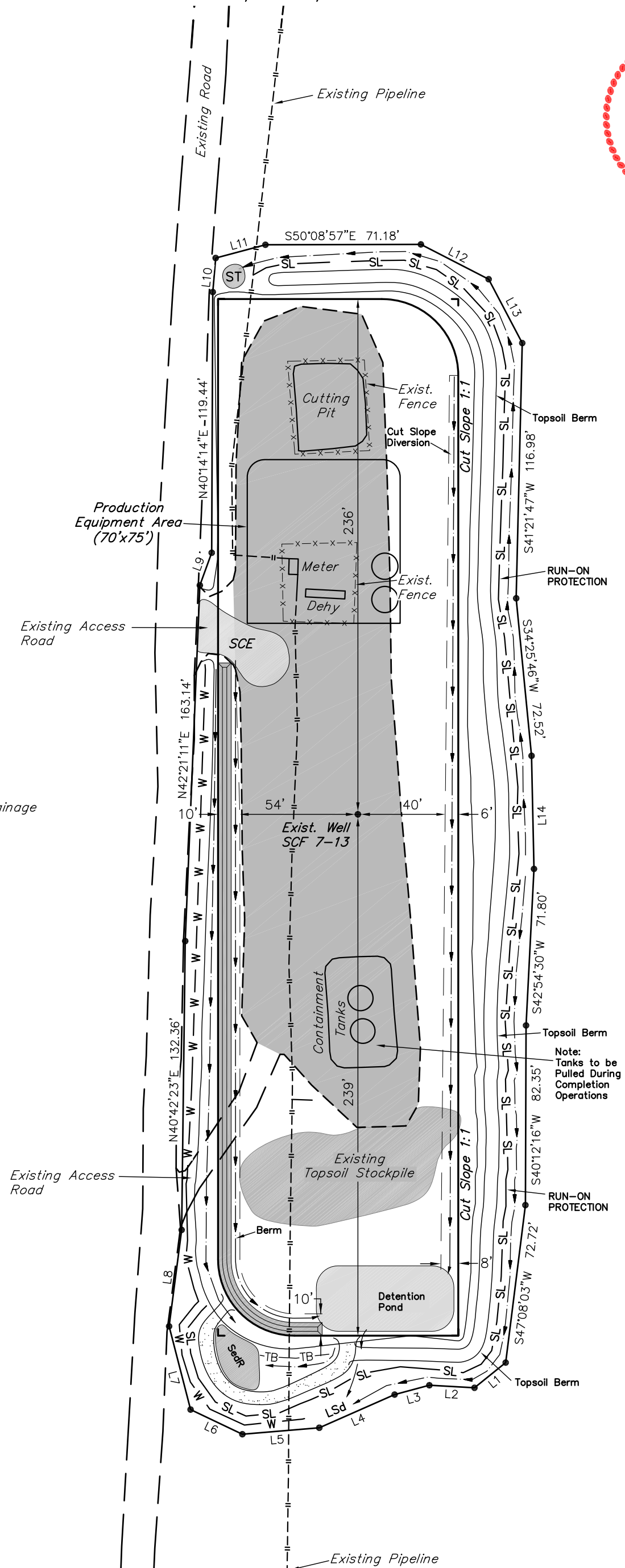
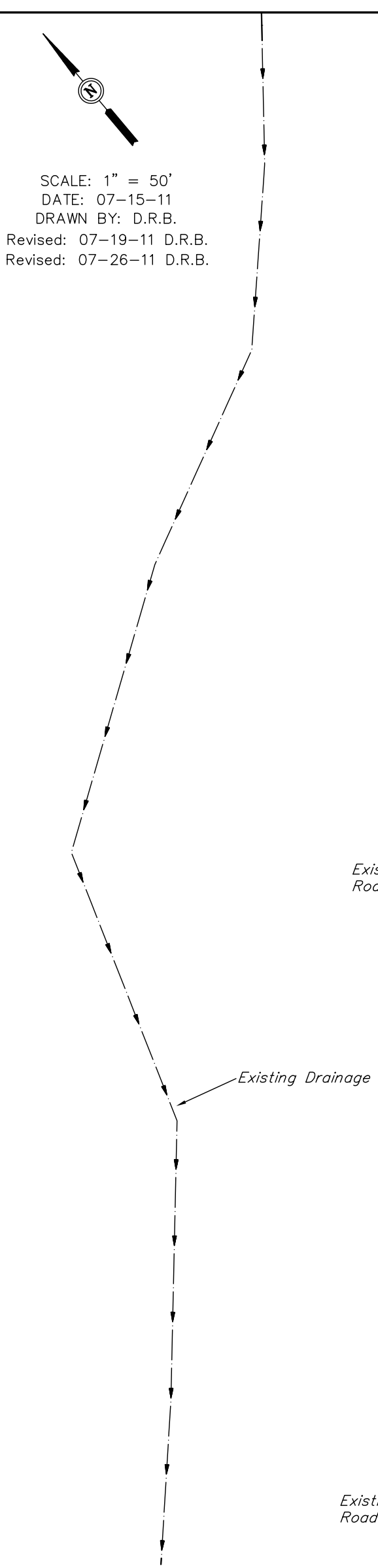


SCALE

Sheet 7 of 11



SCALE: 1" = 50'
 DATE: 07-15-11
 DRAWN BY: D.R.B.
 Revised: 07-19-11 D.R.B.
 Revised: 07-26-11 D.R.B.



LINE TABLE		
LINE	BEARING	LENGTH
L1	N88°58'22"W	18.37'
L2	N46°46'42"W	20.70'
L3	N65°02'28"W	16.48'
L4	N73°46'22"W	37.67'
L5	N54°48'34"W	35.34'
L6	N24°32'17"W	26.28'
L7	N25°33'36"E	39.40'
L8	N47°24'11"E	44.54'
L9	N60°01'23"E	15.90'
L10	N44°47'26"E	15.66'
L11	S64°53'31"E	23.58'
L12	S22°47'32"E	34.91'
L13	S12°15'56"W	33.06'
L14	S38°46'13"W	51.84'

Note:
 Tanks to be
 Pulled During
 Completion
 Operations

- SWMP LEGEND:**
- ECB - EROSION CONTROL BLANKET
 - Lsd - LEVEL SPREADER
 - SCE - STABILIZED CONSTRUCTION ENTRANCE
 - SedR - SEDIMENT RESERVOIR
 - SL - SLASH
 - ST - SEDIMENT TRAP
 - TB - TOE BERM
 - W - WATTLE

APPROXIMATE ACREAGES

APPROX. WELL DISTURBANCE = ± 1.828 ACRES
 ACCESS ROAD DISTURBANCE = ± 0.007 ACRES
TOTAL = ± 1.835 ACRES