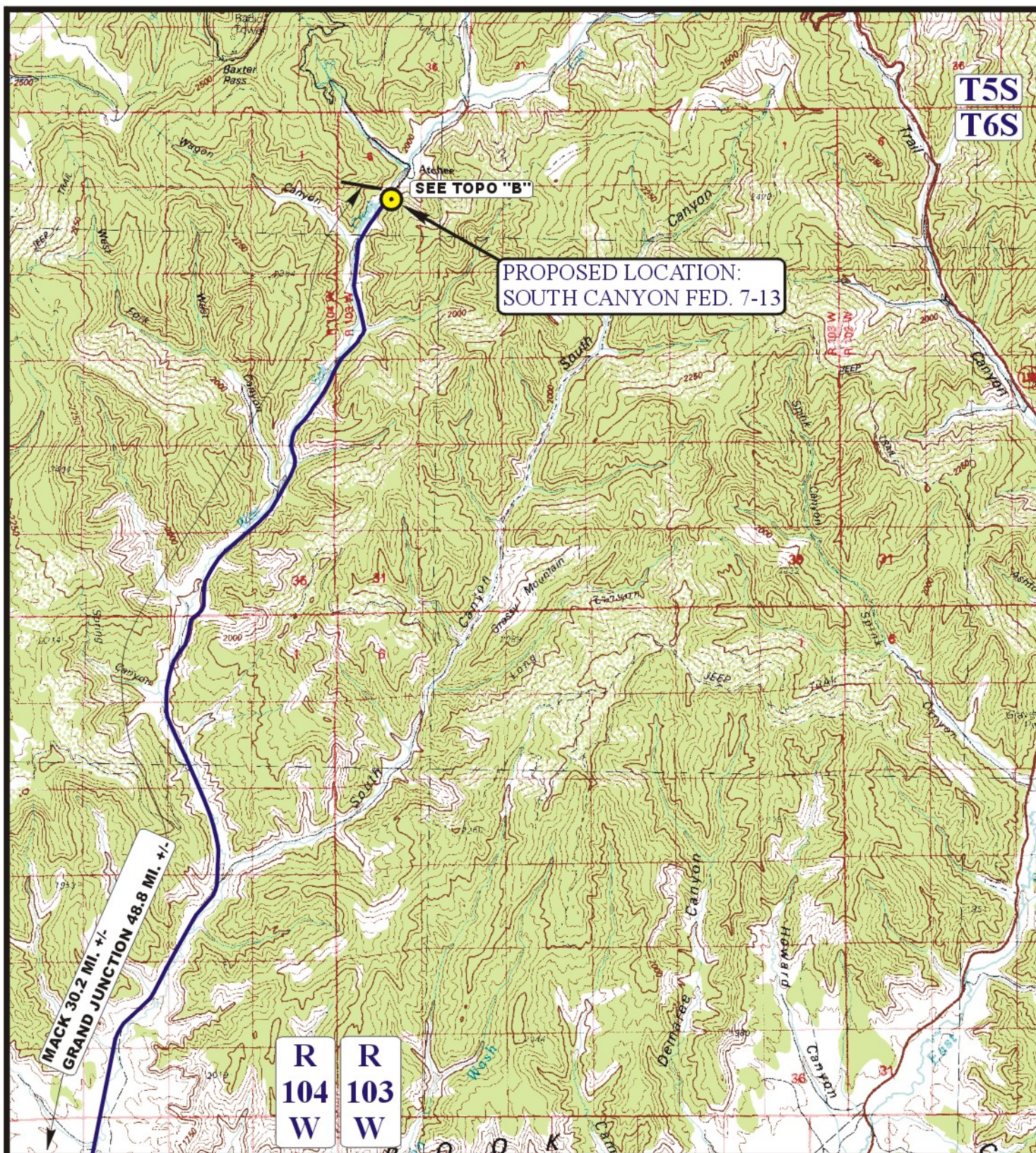


Encana OIL & GAS (USA) INC.
SOUTH CANYON FED. 7-13
SECTION 7, T6S, R103W, 6th P.M.

PROCEED IN A NORTHWESTERLY DIRECTION FROM GRAND JUNCTION COLORADO ON HIGHWAY 6 APPROXIMATELY 18.6 MILES TO MACK COLORADO; CONTINUE ON HIGHWAY 6 IN A NORTHWESTERLY DIRECTION APPROXIMATELY 2.5 MILES TO THE JUNCTION OF THIS ROAD AND EXISTING 8 RD TO THE NORTH; TURN RIGHT AND PROCEED IN A NORTHERLY DIRECTION APPROXIMATELY 2.8 MILES TO THE JUNCTION OF THIS ROAD AND EXISTING S ROAD TO THE WEST; TURN LEFT AND PROCEED IN A WESTERLY DIRECTION APPROXIMATELY 3.0 MILES; CONTINUE ON 4 RD IN A NORTHWESTERLY, THEN NORTHERLY DIRECTION APPROXIMATELY 6.9 MILES TO THE MESA/GARFIELD COUNTY LINE; CONTINUE ON COLORADO HIGHWAY 201 IN A NORTHERLY, THEN NORTHEASTERLY DIRECTION APPROXIMATELY 15.0 MILES TO THE JUNCTION OF THIS ROAD AND THE EXISTING ACCESS ROAD TO THE SOUTHEAST; TURN RIGHT AND PROCEED IN A SOUTHEASTERLY DIRECTION APPROXIMATELY 25' TO THE PROPOSED LOCATION.

TOTAL DISTANCE FROM GRAND JUNCTION, COLORADO TO THE PROPOSED WELL LOCATION IS APPROXIMATELY 48.8 MILES.



LEGEND:

 **PROPOSED LOCATION**



Encana OIL & GAS (USA) INC.

SOUTH CANYON FED. 7-13
SECTION 7, T6S, R103W, 6th P.M.
NW 1/4 NE 1/4



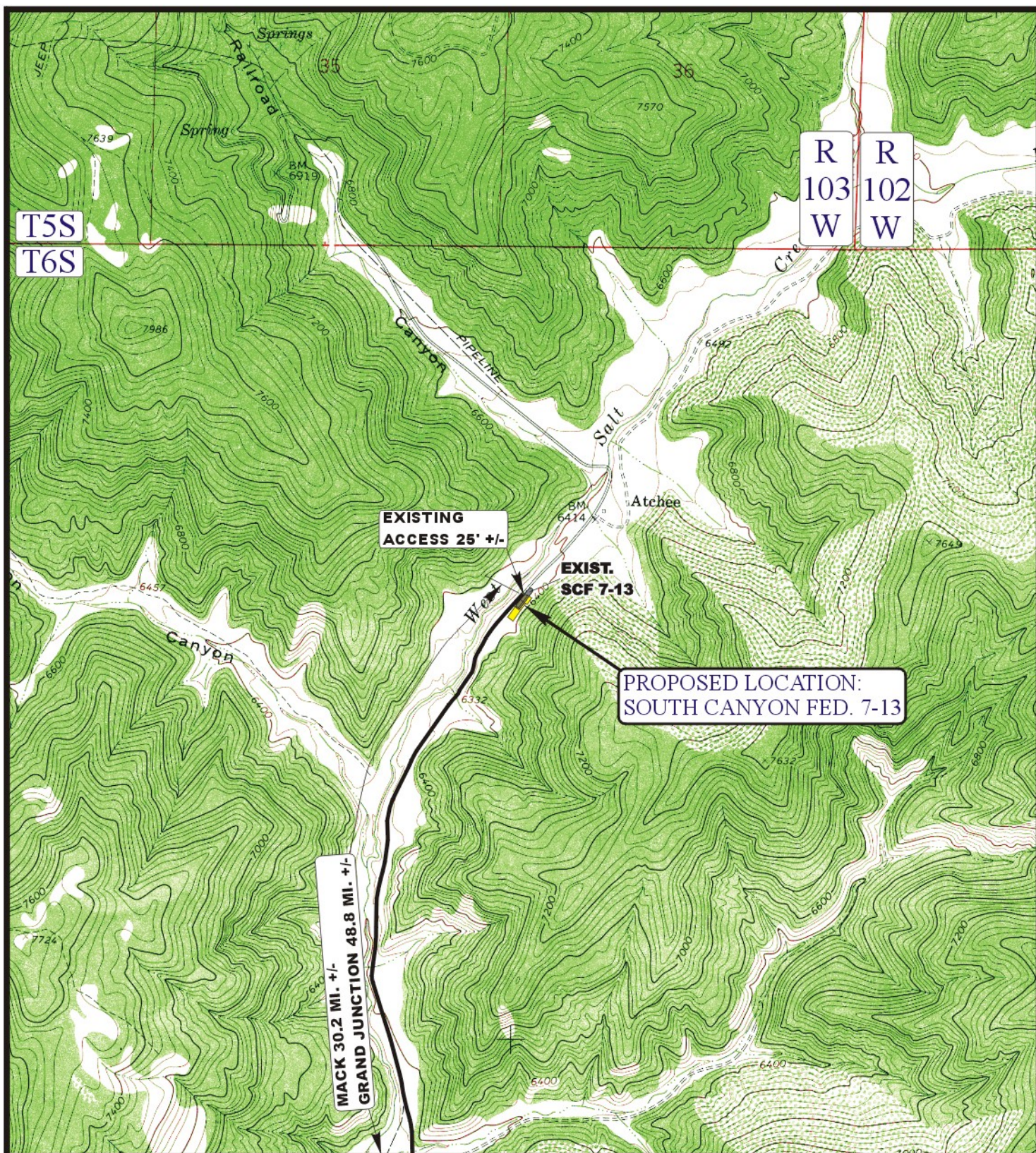
Uintah Engineering & Land Surveying
85 South 200 East Vernal, Utah 84078
(435) 789-1017 * FAX (435) 789-1813

ACCESS ROAD
MAP

06 **07** **11**
MONTH **DAY** **YEAR**

SCALE: 1:100,000 **DRAWN BY: J.L.G.** **REVISED: 00-00-00**





LEGEND:

----- PROPOSED ACCESS ROAD
 ----- EXISTING ROAD



Encana OIL & GAS (USA) INC.

SOUTH CANYON FED. 7-13
 SECTION 7, T6S, R103W, 6th P.M.
 NW 1/4 NE 1/4



Uintah Engineering & Land Surveying
 85 South 200 East Vernal, Utah 84078
 (435) 789-1017 * FAX (435) 789-1813

ACCESS ROAD
 MAP

06 07 11
 MONTH DAY YEAR

B
 TOPO

SCALE: 1" = 2000' DRAWN BY: J.L.G. REVISED: 00-00-00