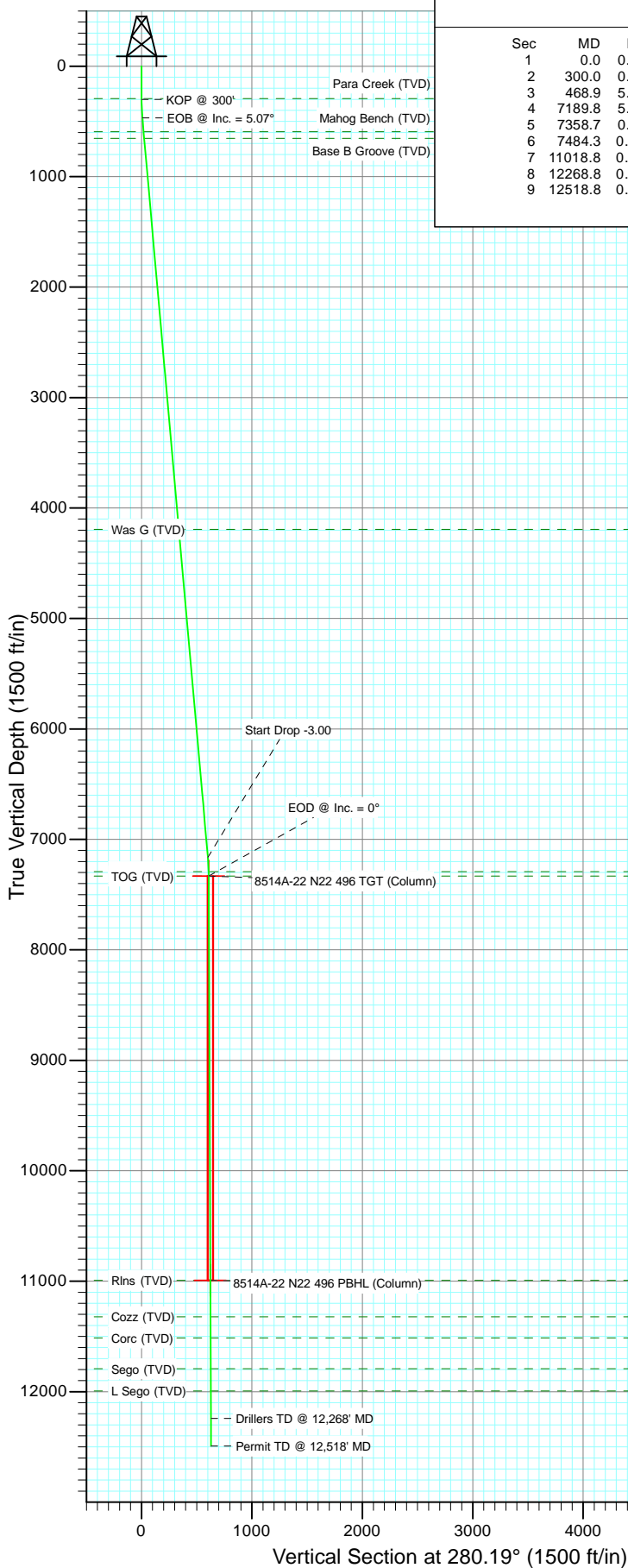


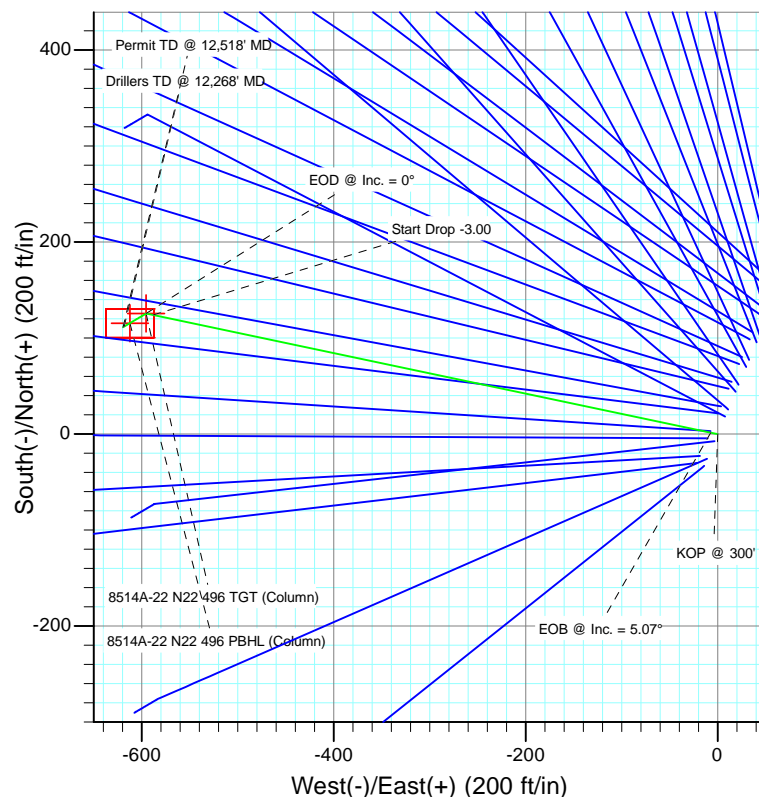


Project: Story Gulch
Site: S22-T4S-R96W (N22 496) (Column Pattern)
Well: 8514A-22 N22 496
Wellbore: DD
Design: Plan #1



SECTION DETAILS

Sec	MD	Inc	Azi	TVD	+N/-S	+E/-W	Dleg	TFace	VSec	Target
1	0.0	0.00	0.00	0.0	0.0	0.0	0.00	0.00	0.0	
2	300.0	0.00	0.00	300.0	0.0	0.0	0.00	0.00	0.0	
3	468.9	5.07	281.91	468.7	1.5	-7.3	3.00	281.91	7.5	
4	7189.8	5.07	281.91	7163.3	124.1	-588.1	0.00	0.00	600.8	8514A-22 N22 496 TGT (Column)
5	7358.7	0.00	0.00	7332.0	125.6	-595.4	3.00	180.00	608.2	8514A-22 N22 496 PBHL (Column)
6	7484.3	0.31	239.43	7457.6	125.4	-595.7	0.25	239.43	608.5	
7	11018.8	0.31	239.43	10992.0	115.6	-612.4	0.00	0.00	623.2	
8	12268.8	0.31	239.43	12242.0	112.1	-618.3	0.00	0.00	628.4	
9	12518.8	0.31	239.43	12492.0	111.4	-619.5	0.00	0.00	629.4	



FORMATION TOP DETAILS

TVDPath	MDPath	Formation
292.0	292.0	Para Creek (TVD)
592.0	592.7	Mahog Bench (TVD)
652.0	652.9	Base B Groove (TVD)
4192.0	4206.8	Was G (TVD)
7292.0	7318.7	WF (TVD)
7332.0	7358.7	TOG (TVD)
10992.0	11018.8	Rins (TVD)
11322.0	11348.8	Cozz (TVD)
11512.0	11538.8	Corc (TVD)
11792.0	11818.8	Sego (TVD)
11992.0	12018.8	L Sego (TVD)



Azimuths to True North
Magnetic North: 10.52°

Magnetic Field
Strength: 52372.1nT
Dip Angle: 65.88°
Date: 12/2/2010
Model: IGRF2010

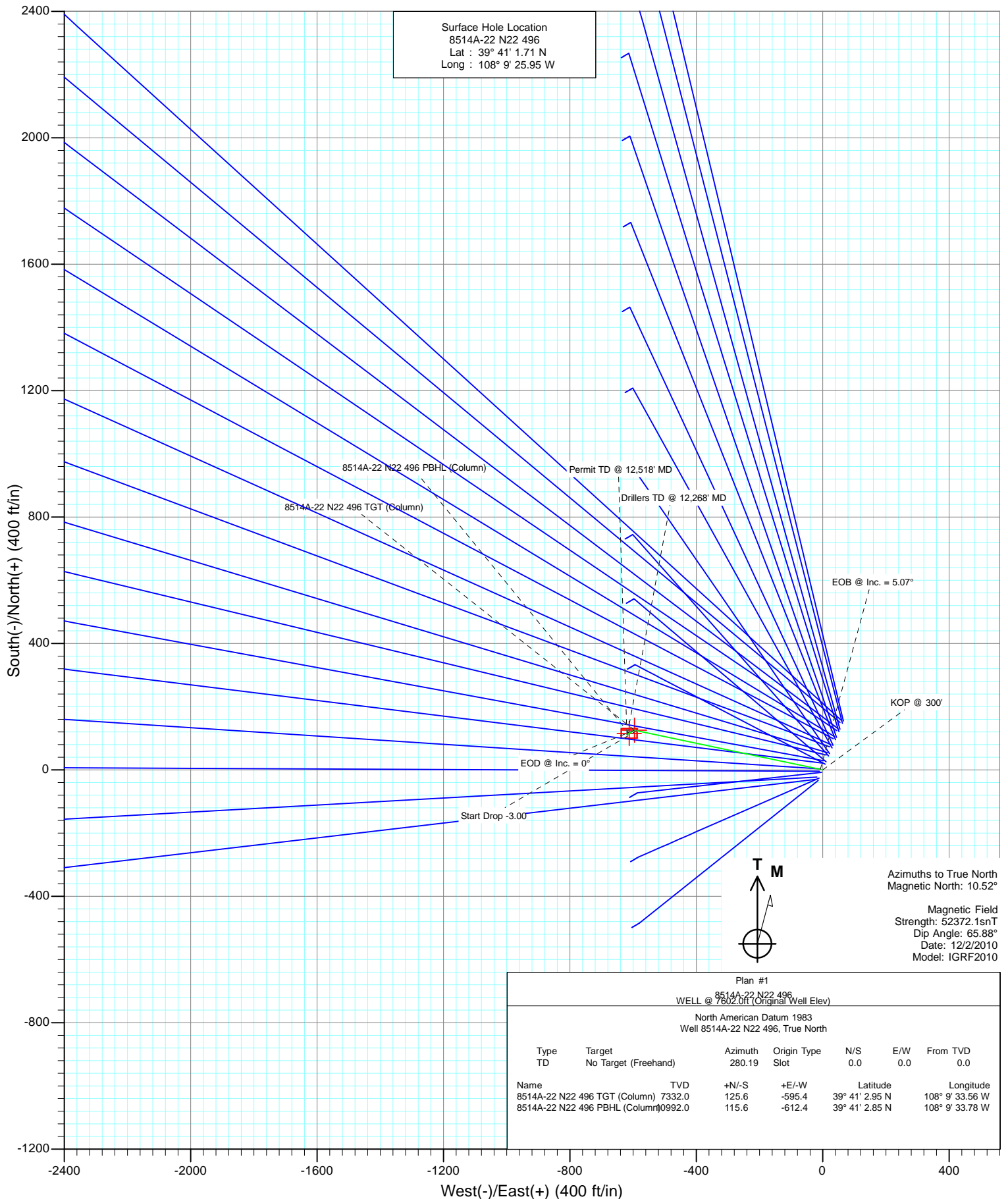
Plan #1
8514A-22 N22 496
WELL @ 7602.0ft (Original Well Elev)

North American Datum 1983
Well 8514A-22 N22 496, True North

Type	Target	Azimuth	Origin	Type	N/S	E/W	From
TD	No Target (Freehand)	280.19	Slot		0.0	0.0	TVD
							0.0
Name		TVD	+N/-S	+E/-W	Latitude	Longitude	
8514A-22 N22 496 TGT (Column)		7332.0	125.6	-595.4	39° 41' 2.95 N	108° 9' 33.56 W	
8514A-22 N22 496 PBHL (Column)		10992.0	115.6	-612.4	39° 41' 2.85 N	108° 9' 33.78 W	

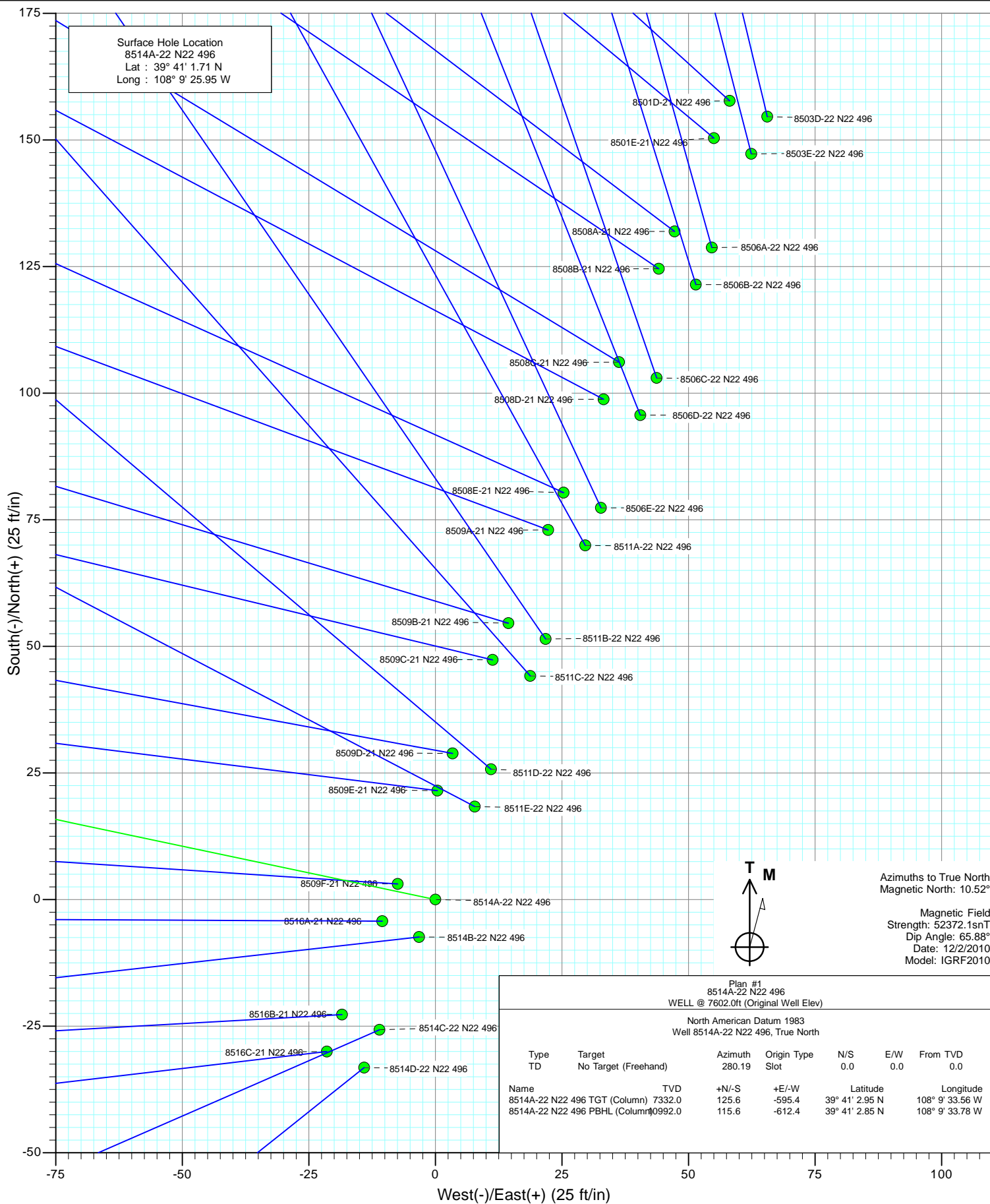


Project: Story Gulch
Site: S22-T4S-R96W (N22 496) (Column Pattern)
Well: 8514A-22 N22 496
Wellbore: DD
Design: Plan #1



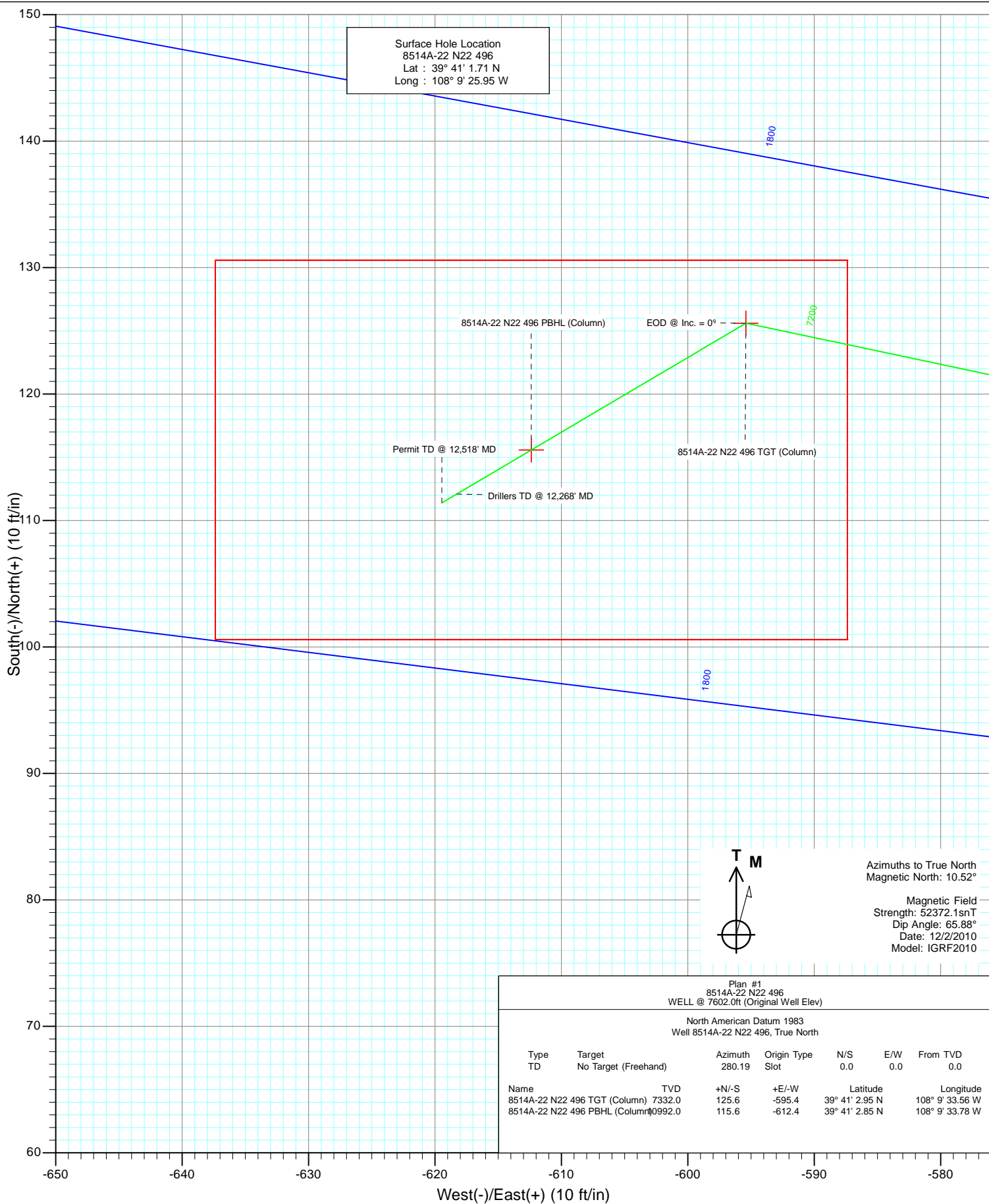


Project: Story Gulch
Site: S22-T4S-R96W (N22 496) (Column Pattern)
Well: 8514A-22 N22 496
Wellbore: DD
Design: Plan #1





Project: Story Gulch
Site: S22-T4S-R96W (N22 496) (Column Pattern)
Well: 8514A-22 N22 496
Wellbore: DD
Design: Plan #1



Cathedral Energy

Planning Report

Database:	EDM 5000.1 US Multi Users DB	Local Co-ordinate Reference:	Well 8514A-22 N22 496
Company:	EnCana Oil & Gas (USA) Inc	TVD Reference:	WELL @ 7602.0ft (Original Well Elev)
Project:	Story Gulch	MD Reference:	WELL @ 7602.0ft (Original Well Elev)
Site:	S22-T4S-R96W (N22 496) (Column Pattern)	North Reference:	True
Well:	8514A-22 N22 496	Survey Calculation Method:	Minimum Curvature
Wellbore:	DD		
Design:	Plan #1		

Project	Story Gulch		
Map System:	US State Plane 1983	System Datum:	Mean Sea Level
Geo Datum:	North American Datum 1983		
Map Zone:	Colorado Central Zone		

Site		S22-T4S-R96W (N22 496) (Column Pattern)			
Site Position:		Northing:	1,685,048.56 ft	Latitude:	39° 41' 3.24 N
From:	Lat/Long	Easting:	2,252,316.79 ft	Longitude:	108° 9' 25.11 W
Position Uncertainty:	0.0 ft	Slot Radius:	13.200 in	Grid Convergence:	-1.68 °

Well	8514A-22 N22 496					
Well Position	+N/-S	0.0 ft	Northing:	1,684,895.92 ft	Latitude:	39° 41' 1.71 N
	+E/-W	0.0 ft	Easting:	2,252,246.72 ft	Longitude:	108° 9' 25.95 W
Position Uncertainty		0.0 ft	Wellhead Elevation:	ft	Ground Level:	7,569.0 ft

Wellbore	DD				
Magnetics	Model Name	Sample Date	Declination (°)	Dip Angle (°)	Field Strength (nT)
	IGRF2010	12/2/2010	10.52	65.88	52,372

Design	Plan #1				
Audit Notes:					
Version:	Phase:	PLAN		Tie On Depth:	0.0
Vertical Section:	Depth From (TVD) (ft)	+N/-S (ft)	+E/-W (ft)	Direction (°)	
	0.0	0.0	0.0	280.19	

Plan Sections										
Measured Depth (ft)	Inclination (°)	Azimuth (°)	Vertical Depth (ft)	+N/-S (ft)	+E/-W (ft)	Dogleg Rate (°/100ft)	Build Rate (°/100ft)	Turn Rate (°/100ft)	TFO (°)	Target
0.0	0.00	0.00	0.0	0.0	0.0	0.00	0.00	0.00	0.00	
300.0	0.00	0.00	300.0	0.0	0.0	0.00	0.00	0.00	0.00	
468.9	5.07	281.91	468.7	1.5	-7.3	3.00	3.00	0.00	281.91	
7,189.8	5.07	281.91	7,163.3	124.1	-588.1	0.00	0.00	0.00	0.00	
7,358.7	0.00	0.00	7,332.0	125.6	-595.4	3.00	-3.00	0.00	180.00	8514A-22 N22 496 TC
7,484.3	0.31	239.43	7,457.6	125.4	-595.7	0.25	0.25	-95.97	239.43	
11,018.8	0.31	239.43	10,992.0	115.6	-612.4	0.00	0.00	0.00	0.00	8514A-22 N22 496 PE
12,268.8	0.31	239.43	12,242.0	112.1	-618.3	0.00	0.00	0.00	0.00	
12,518.8	0.31	239.43	12,492.0	111.4	-619.5	0.00	0.00	0.00	0.00	

Cathedral Energy

Planning Report

Database:	EDM 5000.1 US Multi Users DB	Local Co-ordinate Reference:	Well 8514A-22 N22 496
Company:	EnCana Oil & Gas (USA) Inc	TVD Reference:	WELL @ 7602.0ft (Original Well Elev)
Project:	Story Gulch	MD Reference:	WELL @ 7602.0ft (Original Well Elev)
Site:	S22-T4S-R96W (N22 496) (Column Pattern)	North Reference:	True
Well:	8514A-22 N22 496	Survey Calculation Method:	Minimum Curvature
Wellbore:	DD		
Design:	Plan #1		

Planned Survey

Measured Depth (ft)	Inclination (°)	Azimuth (°)	Vertical Depth (ft)	+N/-S (ft)	+E/-W (ft)	Vertical Section (ft)	Dogleg Rate (°/100ft)	Build Rate (°/100ft)	Comments / Formations
0.0	0.00	0.00	0.0	0.0	0.0	0.0	0.00	0.00	
100.0	0.00	0.00	100.0	0.0	0.0	0.0	0.00	0.00	
200.0	0.00	0.00	200.0	0.0	0.0	0.0	0.00	0.00	
292.0	0.00	0.00	292.0	0.0	0.0	0.0	0.00	0.00	Para Creek (TVD)
300.0	0.00	0.00	300.0	0.0	0.0	0.0	0.00	0.00	KOP @ 300'
400.0	3.00	281.91	400.0	0.5	-2.6	2.6	3.00	3.00	
468.9	5.07	281.91	468.7	1.5	-7.3	7.5	3.00	3.00	EOB @ Inc. = 5.07°
500.0	5.07	281.91	499.7	2.1	-10.0	10.2	0.00	0.00	
592.7	5.07	281.91	592.0	3.8	-18.0	18.4	0.00	0.00	Mahog Bench (TVD)
600.0	5.07	281.91	599.3	3.9	-18.6	19.0	0.00	0.00	
652.9	5.07	281.91	652.0	4.9	-23.2	23.7	0.00	0.00	Base B Groove (TVD)
700.0	5.07	281.91	698.9	5.8	-27.3	27.9	0.00	0.00	
800.0	5.07	281.91	798.5	7.6	-35.9	36.7	0.00	0.00	
900.0	5.07	281.91	898.1	9.4	-44.6	45.5	0.00	0.00	
1,000.0	5.07	281.91	997.7	11.2	-53.2	54.3	0.00	0.00	
1,100.0	5.07	281.91	1,097.3	13.0	-61.8	63.2	0.00	0.00	
1,200.0	5.07	281.91	1,196.9	14.9	-70.5	72.0	0.00	0.00	
1,300.0	5.07	281.91	1,296.5	16.7	-79.1	80.8	0.00	0.00	
1,400.0	5.07	281.91	1,396.1	18.5	-87.8	89.7	0.00	0.00	
1,500.0	5.07	281.91	1,495.8	20.3	-96.4	98.5	0.00	0.00	
1,600.0	5.07	281.91	1,595.4	22.2	-105.0	107.3	0.00	0.00	
1,700.0	5.07	281.91	1,695.0	24.0	-113.7	116.1	0.00	0.00	
1,800.0	5.07	281.91	1,794.6	25.8	-122.3	125.0	0.00	0.00	
1,900.0	5.07	281.91	1,894.2	27.6	-131.0	133.8	0.00	0.00	
2,000.0	5.07	281.91	1,993.8	29.5	-139.6	142.6	0.00	0.00	
2,100.0	5.07	281.91	2,093.4	31.3	-148.3	151.5	0.00	0.00	
2,200.0	5.07	281.91	2,193.0	33.1	-156.9	160.3	0.00	0.00	
2,300.0	5.07	281.91	2,292.6	34.9	-165.5	169.1	0.00	0.00	
2,400.0	5.07	281.91	2,392.2	36.7	-174.2	177.9	0.00	0.00	
2,500.0	5.07	281.91	2,491.8	38.6	-182.8	186.8	0.00	0.00	
2,600.0	5.07	281.91	2,591.5	40.4	-191.5	195.6	0.00	0.00	
2,700.0	5.07	281.91	2,691.1	42.2	-200.1	204.4	0.00	0.00	
2,800.0	5.07	281.91	2,790.7	44.0	-208.7	213.2	0.00	0.00	
2,900.0	5.07	281.91	2,890.3	45.9	-217.4	222.1	0.00	0.00	
3,000.0	5.07	281.91	2,989.9	47.7	-226.0	230.9	0.00	0.00	
3,100.0	5.07	281.91	3,089.5	49.5	-234.7	239.7	0.00	0.00	
3,200.0	5.07	281.91	3,189.1	51.3	-243.3	248.6	0.00	0.00	
3,300.0	5.07	281.91	3,288.7	53.2	-252.0	257.4	0.00	0.00	
3,400.0	5.07	281.91	3,388.3	55.0	-260.6	266.2	0.00	0.00	
3,500.0	5.07	281.91	3,487.9	56.8	-269.2	275.0	0.00	0.00	
3,600.0	5.07	281.91	3,587.5	58.6	-277.9	283.9	0.00	0.00	
3,700.0	5.07	281.91	3,687.2	60.4	-286.5	292.7	0.00	0.00	
3,800.0	5.07	281.91	3,786.8	62.3	-295.2	301.5	0.00	0.00	
3,900.0	5.07	281.91	3,886.4	64.1	-303.8	310.4	0.00	0.00	
4,000.0	5.07	281.91	3,986.0	65.9	-312.4	319.2	0.00	0.00	
4,100.0	5.07	281.91	4,085.6	67.7	-321.1	328.0	0.00	0.00	
4,200.0	5.07	281.91	4,185.2	69.6	-329.7	336.8	0.00	0.00	
4,206.8	5.07	281.91	4,192.0	69.7	-330.3	337.4	0.00	0.00	Was G (TVD)
4,300.0	5.07	281.91	4,284.8	71.4	-338.4	345.7	0.00	0.00	
4,400.0	5.07	281.91	4,384.4	73.2	-347.0	354.5	0.00	0.00	
4,500.0	5.07	281.91	4,484.0	75.0	-355.7	363.3	0.00	0.00	
4,600.0	5.07	281.91	4,583.6	76.9	-364.3	372.1	0.00	0.00	

Cathedral Energy

Planning Report

Database:	EDM 5000.1 US Multi Users DB	Local Co-ordinate Reference:	Well 8514A-22 N22 496
Company:	EnCana Oil & Gas (USA) Inc	TVD Reference:	WELL @ 7602.0ft (Original Well Elev)
Project:	Story Gulch	MD Reference:	WELL @ 7602.0ft (Original Well Elev)
Site:	S22-T4S-R96W (N22 496) (Column Pattern)	North Reference:	True
Well:	8514A-22 N22 496	Survey Calculation Method:	Minimum Curvature
Wellbore:	DD		
Design:	Plan #1		

Planned Survey									
Measured Depth (ft)	Inclination (°)	Azimuth (°)	Vertical Depth (ft)	+N/-S (ft)	+E/-W (ft)	Vertical Section (ft)	Dogleg Rate (°/100ft)	Build Rate (°/100ft)	Comments / Formations
4,700.0	5.07	281.91	4,683.2	78.7	-372.9	381.0	0.00	0.00	
4,800.0	5.07	281.91	4,782.9	80.5	-381.6	389.8	0.00	0.00	
4,900.0	5.07	281.91	4,882.5	82.3	-390.2	398.6	0.00	0.00	
5,000.0	5.07	281.91	4,982.1	84.1	-398.9	407.5	0.00	0.00	
5,100.0	5.07	281.91	5,081.7	86.0	-407.5	416.3	0.00	0.00	
5,200.0	5.07	281.91	5,181.3	87.8	-416.1	425.1	0.00	0.00	
5,300.0	5.07	281.91	5,280.9	89.6	-424.8	433.9	0.00	0.00	
5,400.0	5.07	281.91	5,380.5	91.4	-433.4	442.8	0.00	0.00	
5,500.0	5.07	281.91	5,480.1	93.3	-442.1	451.6	0.00	0.00	
5,600.0	5.07	281.91	5,579.7	95.1	-450.7	460.4	0.00	0.00	
5,700.0	5.07	281.91	5,679.3	96.9	-459.4	469.3	0.00	0.00	
5,800.0	5.07	281.91	5,778.9	98.7	-468.0	478.1	0.00	0.00	
5,900.0	5.07	281.91	5,878.6	100.6	-476.6	486.9	0.00	0.00	
6,000.0	5.07	281.91	5,978.2	102.4	-485.3	495.7	0.00	0.00	
6,100.0	5.07	281.91	6,077.8	104.2	-493.9	504.6	0.00	0.00	
6,200.0	5.07	281.91	6,177.4	106.0	-502.6	513.4	0.00	0.00	
6,300.0	5.07	281.91	6,277.0	107.8	-511.2	522.2	0.00	0.00	
6,400.0	5.07	281.91	6,376.6	109.7	-519.8	531.0	0.00	0.00	
6,500.0	5.07	281.91	6,476.2	111.5	-528.5	539.9	0.00	0.00	
6,600.0	5.07	281.91	6,575.8	113.3	-537.1	548.7	0.00	0.00	
6,700.0	5.07	281.91	6,675.4	115.1	-545.8	557.5	0.00	0.00	
6,800.0	5.07	281.91	6,775.0	117.0	-554.4	566.4	0.00	0.00	
6,900.0	5.07	281.91	6,874.6	118.8	-563.1	575.2	0.00	0.00	
7,000.0	5.07	281.91	6,974.3	120.6	-571.7	584.0	0.00	0.00	
7,100.0	5.07	281.91	7,073.9	122.4	-580.3	592.8	0.00	0.00	
7,189.8	5.07	281.91	7,163.3	124.1	-588.1	600.8	0.00	0.00	Start Drop -3.00
7,200.0	4.76	281.91	7,173.5	124.2	-589.0	601.6	3.00	-3.00	
7,300.0	1.76	281.91	7,273.3	125.4	-594.5	607.3	3.00	-3.00	
7,318.7	1.20	281.91	7,292.0	125.5	-595.0	607.8	3.00	-3.00	WF (TVD)
7,358.7	0.00	0.00	7,332.0	125.6	-595.4	608.2	3.00	-3.00	EOD @ Inc. = 0° - TOG (TVD) - 8514A-22 N22
7,400.0	0.10	239.43	7,373.3	125.6	-595.4	608.3	0.25	0.25	
7,484.3	0.31	239.43	7,457.6	125.4	-595.7	608.5	0.25	0.25	
7,500.0	0.31	239.43	7,473.3	125.4	-595.8	608.6	0.00	0.00	
7,600.0	0.31	239.43	7,573.3	125.1	-596.2	609.0	0.00	0.00	
7,700.0	0.31	239.43	7,673.3	124.8	-596.7	609.4	0.00	0.00	
7,800.0	0.31	239.43	7,773.3	124.5	-597.2	609.8	0.00	0.00	
7,900.0	0.31	239.43	7,873.3	124.3	-597.7	610.2	0.00	0.00	
8,000.0	0.31	239.43	7,973.3	124.0	-598.1	610.6	0.00	0.00	
8,100.0	0.31	239.43	8,073.3	123.7	-598.6	611.0	0.00	0.00	
8,200.0	0.31	239.43	8,173.3	123.4	-599.1	611.5	0.00	0.00	
8,300.0	0.31	239.43	8,273.3	123.2	-599.5	611.9	0.00	0.00	
8,400.0	0.31	239.43	8,373.3	122.9	-600.0	612.3	0.00	0.00	
8,500.0	0.31	239.43	8,473.3	122.6	-600.5	612.7	0.00	0.00	
8,600.0	0.31	239.43	8,573.3	122.3	-601.0	613.1	0.00	0.00	
8,700.0	0.31	239.43	8,673.3	122.0	-601.4	613.5	0.00	0.00	
8,800.0	0.31	239.43	8,773.3	121.8	-601.9	614.0	0.00	0.00	
8,900.0	0.31	239.43	8,873.3	121.5	-602.4	614.4	0.00	0.00	
9,000.0	0.31	239.43	8,973.3	121.2	-602.9	614.8	0.00	0.00	
9,100.0	0.31	239.43	9,073.3	120.9	-603.3	615.2	0.00	0.00	
9,200.0	0.31	239.43	9,173.3	120.6	-603.8	615.6	0.00	0.00	
9,300.0	0.31	239.43	9,273.3	120.4	-604.3	616.0	0.00	0.00	
9,400.0	0.31	239.43	9,373.3	120.1	-604.7	616.4	0.00	0.00	

Cathedral Energy

Planning Report

Database:	EDM 5000.1 US Multi Users DB	Local Co-ordinate Reference:	Well 8514A-22 N22 496
Company:	EnCana Oil & Gas (USA) Inc	TVD Reference:	WELL @ 7602.0ft (Original Well Elev)
Project:	Story Gulch	MD Reference:	WELL @ 7602.0ft (Original Well Elev)
Site:	S22-T4S-R96W (N22 496) (Column Pattern)	North Reference:	True
Well:	8514A-22 N22 496	Survey Calculation Method:	Minimum Curvature
Wellbore:	DD		
Design:	Plan #1		

Planned Survey									
Measured Depth (ft)	Inclination (°)	Azimuth (°)	Vertical Depth (ft)	+N/-S (ft)	+E/-W (ft)	Vertical Section (ft)	Dogleg Rate (°/100ft)	Build Rate (°/100ft)	Comments / Formations
9,500.0	0.31	239.43	9,473.3	119.8	-605.2	616.9	0.00	0.00	
9,600.0	0.31	239.43	9,573.3	119.5	-605.7	617.3	0.00	0.00	
9,700.0	0.31	239.43	9,673.3	119.3	-606.2	617.7	0.00	0.00	
9,800.0	0.31	239.43	9,773.3	119.0	-606.6	618.1	0.00	0.00	
9,900.0	0.31	239.43	9,873.3	118.7	-607.1	618.5	0.00	0.00	
10,000.0	0.31	239.43	9,973.3	118.4	-607.6	618.9	0.00	0.00	
10,100.0	0.31	239.43	10,073.3	118.1	-608.0	619.4	0.00	0.00	
10,200.0	0.31	239.43	10,173.3	117.9	-608.5	619.8	0.00	0.00	
10,300.0	0.31	239.43	10,273.3	117.6	-609.0	620.2	0.00	0.00	
10,400.0	0.31	239.43	10,373.3	117.3	-609.5	620.6	0.00	0.00	
10,500.0	0.31	239.43	10,473.3	117.0	-609.9	621.0	0.00	0.00	
10,600.0	0.31	239.43	10,573.2	116.7	-610.4	621.4	0.00	0.00	
10,700.0	0.31	239.43	10,673.2	116.5	-610.9	621.8	0.00	0.00	
10,800.0	0.31	239.43	10,773.2	116.2	-611.3	622.3	0.00	0.00	
10,900.0	0.31	239.43	10,873.2	115.9	-611.8	622.7	0.00	0.00	
11,000.0	0.31	239.43	10,973.2	115.6	-612.3	623.1	0.00	0.00	
11,018.8	0.31	239.43	10,992.0	115.6	-612.4	623.2	0.00	0.00	Rins (TVD) - 8514A-22 N22 496 PBHL (Column
11,100.0	0.31	239.43	11,073.2	115.4	-612.8	623.5	0.00	0.00	
11,200.0	0.31	239.43	11,173.2	115.1	-613.2	623.9	0.00	0.00	
11,300.0	0.31	239.43	11,273.2	114.8	-613.7	624.3	0.00	0.00	
11,348.8	0.31	239.43	11,322.0	114.7	-613.9	624.5	0.00	0.00	Cozz (TVD)
11,400.0	0.31	239.43	11,373.2	114.5	-614.2	624.7	0.00	0.00	
11,500.0	0.31	239.43	11,473.2	114.2	-614.6	625.2	0.00	0.00	
11,538.8	0.31	239.43	11,512.0	114.1	-614.8	625.3	0.00	0.00	Corc (TVD)
11,600.0	0.31	239.43	11,573.2	114.0	-615.1	625.6	0.00	0.00	
11,700.0	0.31	239.43	11,673.2	113.7	-615.6	626.0	0.00	0.00	
11,800.0	0.31	239.43	11,773.2	113.4	-616.1	626.4	0.00	0.00	
11,818.8	0.31	239.43	11,792.0	113.3	-616.2	626.5	0.00	0.00	Sego (TVD)
11,900.0	0.31	239.43	11,873.2	113.1	-616.5	626.8	0.00	0.00	
12,000.0	0.31	239.43	11,973.2	112.8	-617.0	627.2	0.00	0.00	
12,018.8	0.31	239.43	11,992.0	112.8	-617.1	627.3	0.00	0.00	L Sego (TVD)
12,100.0	0.31	239.43	12,073.2	112.6	-617.5	627.7	0.00	0.00	
12,200.0	0.31	239.43	12,173.2	112.3	-618.0	628.1	0.00	0.00	
12,268.8	0.31	239.43	12,242.0	112.1	-618.3	628.4	0.00	0.00	Drillers TD @ 12,268' MD
12,300.0	0.31	239.43	12,273.2	112.0	-618.4	628.5	0.00	0.00	
12,400.0	0.31	239.43	12,373.2	111.7	-618.9	628.9	0.00	0.00	
12,500.0	0.31	239.43	12,473.2	111.4	-619.4	629.3	0.00	0.00	
12,518.8	0.31	239.43	12,492.0	111.4	-619.5	629.4	0.00	0.00	

Targets									
Target Name	Dip Angle (°)	Dip Dir. (°)	TVD (ft)	+N/-S (ft)	+E/-W (ft)	Northing (ft)	Easting (ft)	Latitude	Longitude
8514A-22 N22 496 PBH	0.00	0.00	10,992.0	115.6	-612.4	1,685,029.35	2,251,637.98	39° 41' 2.85 N	108° 9' 33.78 W
- plan hits target center									
- Rectangle (sides W30.0 H50.0 D0.0)									
8514A-22 N22 496 TGT	0.00	0.00	7,332.0	125.6	-595.4	1,685,038.88	2,251,655.25	39° 41' 2.95 N	108° 9' 33.56 W
- plan hits target center									
- Point									

Cathedral Energy

Planning Report

Database:	EDM 5000.1 US Multi Users DB	Local Co-ordinate Reference:	Well 8514A-22 N22 496
Company:	EnCana Oil & Gas (USA) Inc	TVD Reference:	WELL @ 7602.0ft (Original Well Elev)
Project:	Story Gulch	MD Reference:	WELL @ 7602.0ft (Original Well Elev)
Site:	S22-T4S-R96W (N22 496) (Column Pattern)	North Reference:	True
Well:	8514A-22 N22 496	Survey Calculation Method:	Minimum Curvature
Wellbore:	DD		
Design:	Plan #1		

Formations

Measured Depth (ft)	Vertical Depth (ft)	Name	Lithology	Dip (°)	Dip Direction (°)
292.0	292.0	Para Creek (TVD)			
592.7	592.0	Mahog Bench (TVD)			
652.9	652.0	Base B Groove (TVD)			
4,206.8	4,192.0	Was G (TVD)			
7,318.7	7,292.0	WF (TVD)			
7,358.7	7,332.0	TOG (TVD)			
11,018.8	10,992.0	Rlns (TVD)			
11,348.8	11,322.0	Cozz (TVD)			
11,538.8	11,512.0	Corc (TVD)			
11,818.8	11,792.0	Sego (TVD)			
12,018.8	11,992.0	L Sego (TVD)			

Plan Annotations

Measured Depth (ft)	Vertical Depth (ft)	Local Coordinates		Comment
		+N/-S (ft)	+E/-W (ft)	
300.0	300.0	0.0	0.0	KOP @ 300'
468.9	468.7	1.5	-7.3	EOB @ Inc. = 5.07°
7,189.8	7,163.3	124.1	-588.1	Start Drop -3.00
7,358.7	7,332.0	125.6	-595.4	EOD @ Inc. = 0°
12,268.8	12,242.0	125.4	-595.7	Drillers TD @ 12,268' MD
12,518.8	12,492.0	115.6	-612.4	Permit TD @ 12,518' MD