

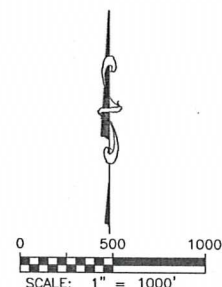
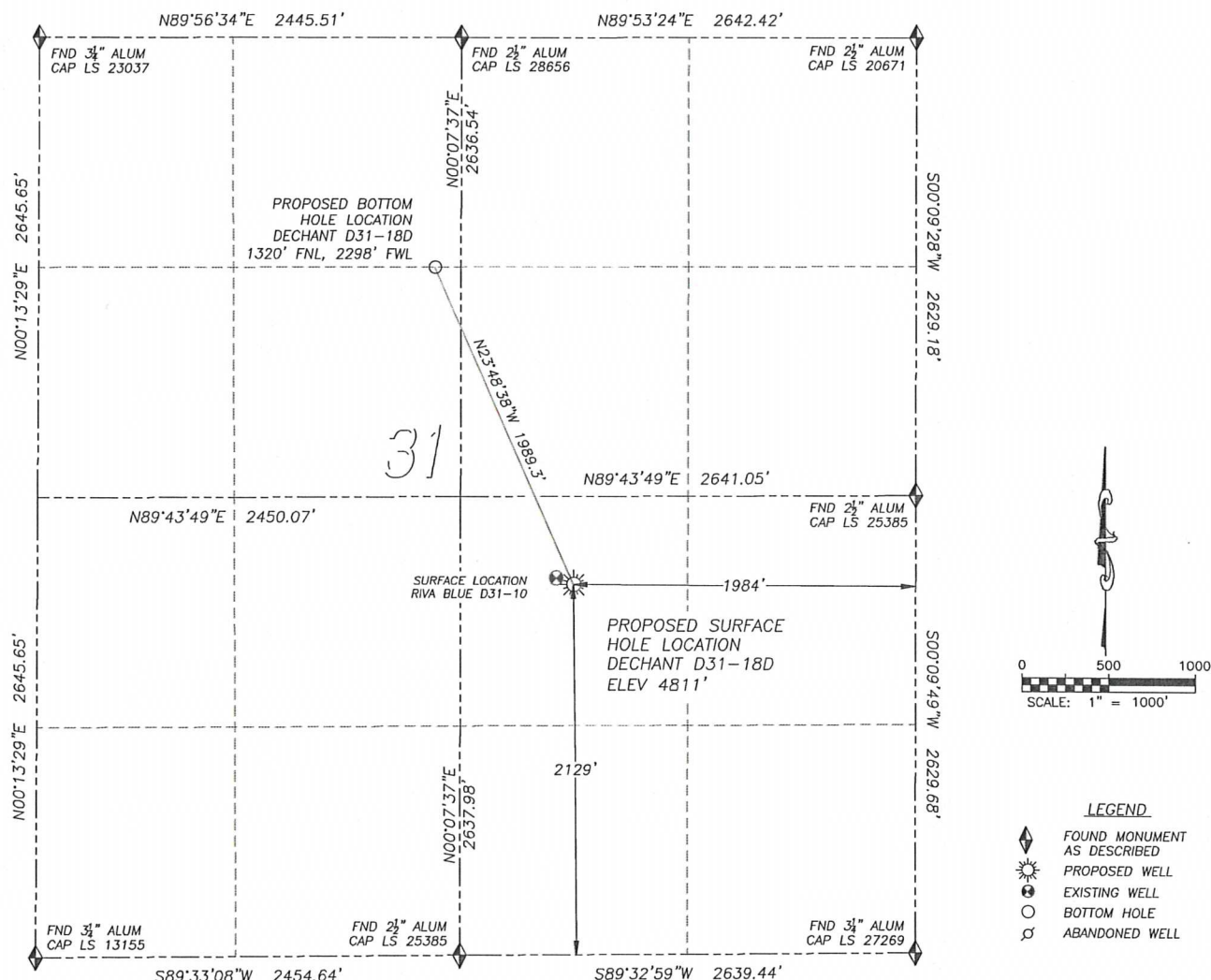
DALEY LAND SURVEYING, INC.

PARKER, CO. 80134

303 953 9841

# WELL LOCATION CERTIFICATE DECHANT D31-18D

SECTION 31, TOWNSHIP 3 NORTH, RANGE 64 WEST OF THE 6TH PRINCIPAL MERIDIAN

**LEGEND**

- ◆ FOUND MONUMENT AS DESCRIBED
- ☀ PROPOSED WELL
- EXISTING WELL
- BOTTOM HOLE
- ⊗ ABANDONED WELL

**NAD 83 LATITUDE AND LONGITUDE****DECHANT D31-18D SURFACE HOLE:**

LATITUDE: N40.18027°  
 LONGITUDE: W104.59174°  
 ELEVATION: 4811'  
 FOOTAGE: 2129' FSL, 1984' FEL  
 PDOP: 1.3  
 QTR/QTR: NW4/SE4  
 PROP LINE: 507'± NORTH

**BOTTOM HOLE:**

LATITUDE: N40.18526°  
 LONGITUDE: W104.59461°  
 FOOTAGE: 1320' FNL, 2298' FWL

**NEAREST EXISTING WELL:**

RIVA BLUE D31-10 SURFACE HOLE  
 LATITUDE: N40.18037°  
 LONGITUDE: W104.59210°  
 ELEVATION: 4809'  
 107' NORTHWEST

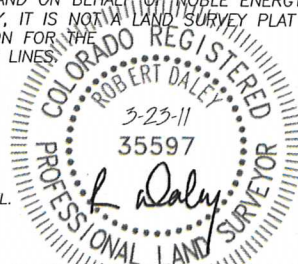
IN ACCORDANCE WITH A REQUEST FROM SEAN CASPER OF NOBLE ENERGY INC., DALEY LAND SURVEYING, INC. HAS DETERMINED THE SURFACE LOCATION OF THE DECHANT D31-18D WELL TO BE 2129' FSL, 1984' FEL, AS MEASURED AT NINETY (90) DEGREES FROM THE SECTION LINES OF SECTION 31, TOWNSHIP 3 NORTH, RANGE 64 WEST OF THE 6TH PRINCIPAL MERIDIAN, WELD COUNTY, COLORADO. THE BOTTOM HOLE LOCATION, PROVIDED BY THE CLIENT, IS TO BE 1320' FNL, 2298' FWL.

I HEREBY CERTIFY THAT THIS WELL LOCATION CERTIFICATE WAS PREPARED BY ME OR UNDER MY DIRECT SUPERVISION, THAT THE WORK WAS COMPLETED ON 3/16/2011 FOR AND ON BEHALF OF NOBLE ENERGY, INC., AND THAT THIS MAP DOES NOT REPRESENT A BOUNDARY SURVEY, IT IS NOT A LAND SURVEY PLAT OR AN IMPROVEMENT SURVEY PLAT AND IT IS NOT TO BE RELIED UPON FOR THE ESTABLISHMENT OF FENCE, BUILDING OR OTHER FUTURE IMPROVEMENT LINES.

**NOTES:**

- 1) BEARINGS FOR THIS MAP ARE ASSUMED AND BASED UPON GPS OBSERVATIONS MADE BETWEEN MONUMENTS LOCATED AT THE SOUTHEAST CORNER AND EAST QUARTER CORNER OF SECTION 31, T.3N., R.64W.
- 2) HORIZONTAL DATUM IS NAD83.
- 3) VERTICAL DATUM IS NAVD88. ELEVATIONS ARE DERIVED FROM GPS OBSERVATIONS PROCESSED THROUGH OPUS, UTILIZING THE GEOID03 MODEL.
- 4) SEE LOCATION DRAWING FOR VISIBLE IMPROVEMENTS WITHIN 600' OF PROPOSED SURFACE HOLE LOCATION.
- 5) SURFACE USE: PASTURE.

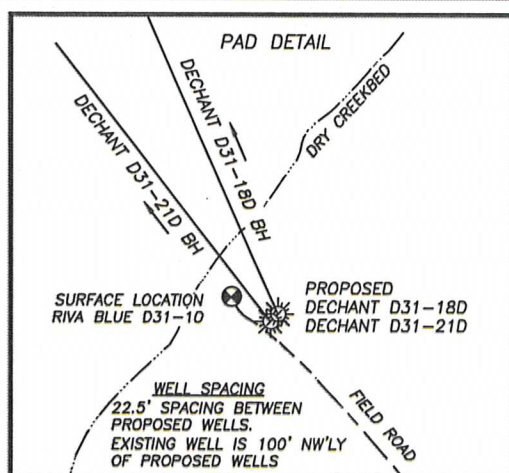
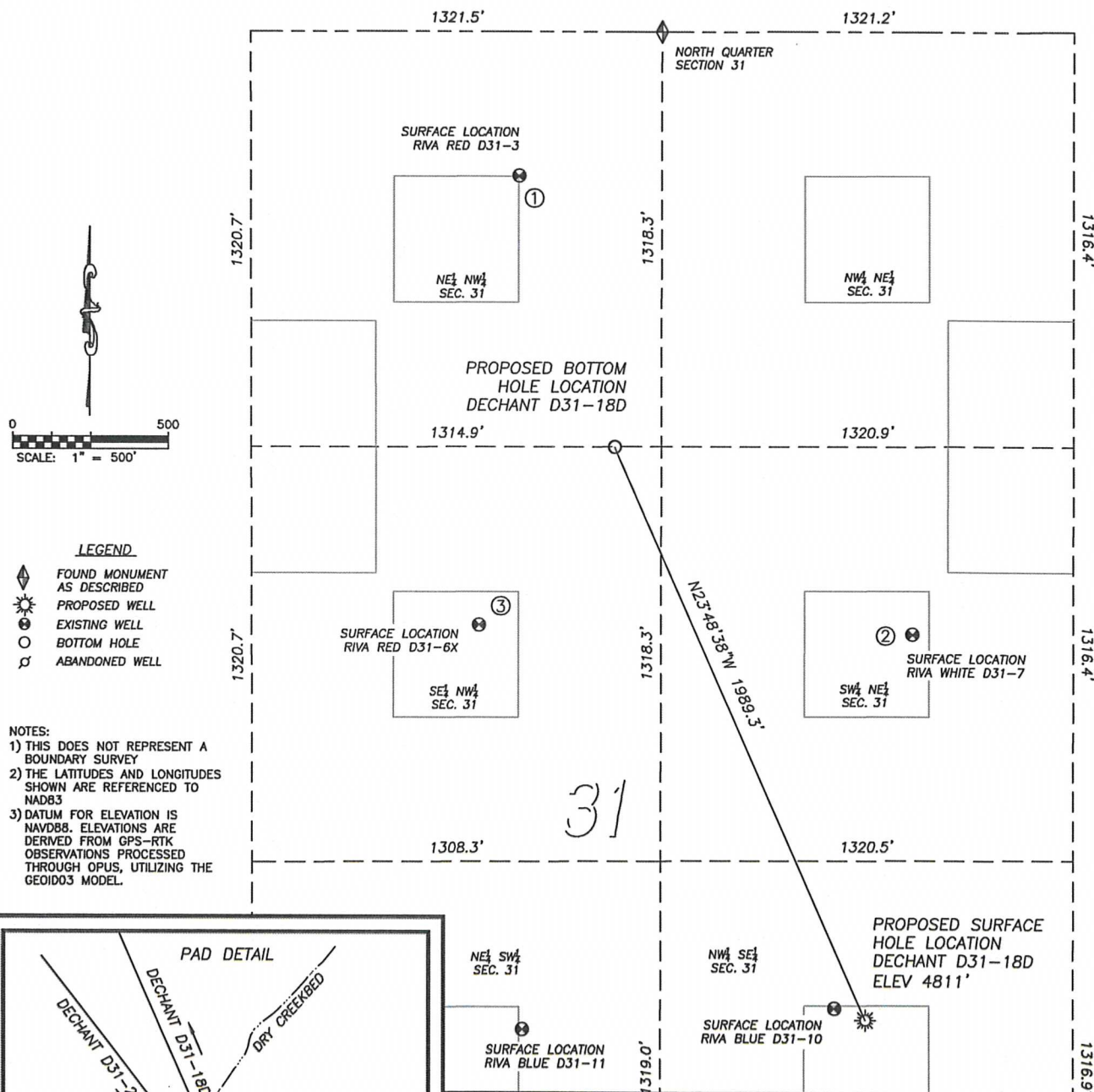
NOTICE: According to Colorado law you MUST commence any legal action based upon any defect in this W.L.C. within three years after you first discover such defect. In no event may any action based upon any such defect in this W.L.C. be commenced more than ten years from the date of the certification shown herein.



FOR AND ON BEHALF OF  
 DALEY LAND SURVEYING, INC.,  
 Robert Daley, PLS 35597

## SITE SKETCH DECHANT D31-18D

SECTION 31, TOWNSHIP 3 NORTH, RANGE 64 WEST OF THE 6TH PRINCIPAL MERIDIAN



①  
RIVA RED D31-3  
 NE/NW SEC. 31  
 458' FNL, 1982' FWL  
 917' NW OF PROPOSED  
 BOTTOM HOLE LOCATION  
 LAT. N40.18763°  
 LONG. W104.59573°  
 EL: 4805'  
 PDOP 2.4

②  
RIVA WHITE D31-7  
 SW/NE SEC. 31  
 1915' FNL, 1835' FEL  
 1124' SE OF PROPOSED  
 BOTTOM HOLE LOCATION  
 LAT. N40.18363°  
 LONG. W104.59119°  
 EL: 4805'  
 PDOP 2.6

③  
RIVA RED D31-6X  
 SE/NW SEC. 31  
 1885' FNL, 1866' FWL  
 713' SW OF PROPOSED  
 BOTTOM HOLE LOCATION  
 LAT. N40.18371°  
 LONG. W104.59616°  
 EL: 4810'  
 PDOP 2.0