
CHEVRON - MID-CONTINENT EBIZ

**SKR 598-25-CV-20
SKINNER RIDGE
Garfield County , Colorado**

Cement Production Casing
25-Oct-2008

Job Site Documents

Cementing Job Summary

The Road to Excellence Starts with Safety

Sold To #: 338668		Ship To #: 2666578		Quote #:		Sales Order #: 6264034	
Customer: CHEVRON - MID-CONTINENT EBIZ				Customer Rep: CHAD KAVANDER			
Well Name: SKR		Well #: 598-25-CV-20		API/UWI #:			
Field: SKINNER RIDGE		City (SAP): HOUSTON		County/Parish: Garfield		State: Colorado	
Contractor: H&P 316		Rig/Platform Name/Num: H&P 316					
Job Purpose: Cement Production Casing							
Well Type: Development Well				Job Type: Cement Production Casing			
Sales Person: HARTLEY, RICHARD				Srv Supervisor: ROCKERT, CHRISTOPHER		MBU ID Emp #: 332914	

Job Personnel								
HES Emp Name	Exp Hrs	Emp #	HES Emp Name	Exp Hrs	Emp #	HES Emp Name	Exp Hrs	Emp #
GREGORY, JON D	4	439067	LITTLE, FRANK	4	448361	ROCKERT, CHRISTOPHER Michael	4	332914
RUSSELL, MICHAEL Allan	4	404301						

Equipment							
HES Unit #	Distance-1 way	HES Unit #	Distance-1 way	HES Unit #	Distance-1 way	HES Unit #	Distance-1 way
10303648	120 mile	10624098	120 mile	10744648C	120 mile	10951245	120 mile
10998508	120 mile	6345	120 mile				

Job Hours								
Date	On Location Hours	Operating Hours	Date	On Location Hours	Operating Hours	Date	On Location Hours	Operating Hours
10/25/08	4	1.5						
TOTAL			Total is the sum of each column separately					

Job				Job Times			
Formation Name				Date	Time	Time Zone	
Formation Depth (MD)	Top	Bottom		Called Out	24 - Oct - 2008	23:00	MST
Form Type	BHST			On Location	25 - Oct - 2008	02:30	MST
Job depth MD	6153. ft	Job Depth TVD	6153. ft	Job Started	25 - Oct - 2008	05:00	MST
Water Depth	Wk Ht Above Floor 5. ft			Job Completed	25 - Oct - 2008	06:32	MST
Perforation Depth (MD)	From	To		Departed Loc	25 - Oct - 2008	08:45	MST

Well Data											
Description	New / Used	Max pressure psig	Size in	ID in	Weight lbm/ft	Thread	Grade	Top MD ft	Bottom MD ft	Top TVD ft	Bottom TVD ft

Sales/Rental/3 rd Party (HES)			
Description	Qty	Qty uom	Supplier
PLUG,CMTG,TOP,4 1/2,HWE,3.65 MIN/4.14 MA	1	EA	

Tools and Accessories													
Type	Size	Qty	Make	Depth	Type	Size	Qty	Make	Depth	Type	Size	Qty	Make
Guide Shoe					Packer					Top Plug	4.5	1	
Float Shoe					Bridge Plug					Bottom Plug			
Float Collar					Retainer					SSR plug set			
Insert Float										Plug Container	4.5	1	
Stage Tool										Centralizers			

Miscellaneous Materials											
Gelling Agt	Conc	Surfactant	Conc	Acid Type	Qty	Conc %					
Treatment Fld	Conc	Inhibitor	Conc	Sand Type <td>Size <td>Qty</td> </td>	Size <td>Qty</td>	Qty					

HALLIBURTON

Cementing Job Summary

Fluid Data									
Stage/Plug #: 1									
Fluid #	Stage Type	Fluid Name	Qty	Qty uom	Mixing Density lbm/gal	Yield ft ³ /sk	Mix Fluid Gal/sk	Rate bbl/min	Total Mix Fluid Gal/sk
1	Dyed PolyFlake Spacer		50.0	bbl	8.33	.0	.0	.0	
2	Lead Cement	EXTENDACEM (TM) SYSTEM (452981)	305.0	sacks	12.8	1.55	7.15		7.67
		7.674 Gal FRESH WATER							
3	Tail Cement	EXTENDACEM (TM) SYSTEM (452981)	690.0	sacks	13.2	1.43	6.19		7.0
4	KCL Displacement		94.7	bbl	.	.0	.0	.0	
Calculated Values		Pressures		Volumes					
Displacement	94.7	Shut In: Instant		Lost Returns	No	Cement Slurry	259.9	Pad	
Top Of Cement	????	5 Min		Cement Returns	NO	Actual Displacement	94.7	Treatment	
Frac Gradient		15 Min		Spacers	50	Load and Breakdown		Total Job	405
Rates									
Circulating	RIG	Mixing	8	Displacement	8	Avg. Job	8		
Cement Left In Pipe	Amount	43.26 ft	Reason	Shoe Joint					
Frac Ring # 1 @	ID	Frac ring # 2 @	ID	Frac Ring # 3 @	ID	Frac Ring # 4 @	ID		
The Information Stated Herein Is Correct				Customer Representative Signature					

HALLIBURTON

Cementing Job Log

The Road to Excellence Starts with Safety

Sold To #: 338668	Ship To #: 2666578	Quote #:	Sales Order #: 6264034
Customer: CHEVRON - MID-CONTINENT EBIZ		Customer Rep: CHAD KAVANDER	
Well Name: SKR	Well #: 598-25-CV-20	API/UWI #:	
Field: SKINNER RIDGE	City (SAP): HOUSTON	County/Parish: Garfield	State: Colorado
Legal Description:			
Lat:		Long:	
Contractor: H&P 316		Rig/Platform Name/Num: H&P 316	
Job Purpose: Cement Production Casing			
Well Type: Development Well		Job Type: Cement Production Casing	
Sales Person: HARTLEY, RICHARD		Ticket Amount:	
Srv Supervisor: ROCKERT, CHRISTOPHER		MBU ID Emp #: 332914	

Activity Description	Date/Time	Cht #	Rate bbl/min	Volume bbl		Pressure psig		Comments
				Stage	Total	Tubing	Casing	
Call Out	10/24/2008 23:00							TD-6180/ TP-6153/ SHOE-43.26/ MUD-10.6/ HOLE 7 7/8/ SURF.CSG-1029 8 5/8 24#
Arrive At Loc	10/25/2008 02:30							ELITE #6
Rig-Up Equipment	10/25/2008 02:45							HAD TO SLOW RATE SEVERAL TIMES DUE TO POOR DELIVERY.
Pre-Job Safety Meeting	10/25/2008 04:30							COMPANY MAN CONFIRMED PLUG WAS LOADED
Start Job	10/25/2008 05:00							HEAD WAS SECURED DOWN ENTIRE JOB
Other	10/25/2008 05:01		2	2			504.0	PRIME LINES
Test Lines	10/25/2008 05:04		1				4700. 0	HAD TO TEST THREE TIMES DUE TO LEAK CORRECTION
Pump Spacer 1	10/25/2008 05:13		8	50			665.0	FRESH WATER. CIRCULATION ESTABLISHED
Pump Lead Cement	10/25/2008 05:25		8	84.2			1100. 0	305SKS/1.55 YIELD/ 7.15 GAL.SK
Clean Lines	10/25/2008 05:25							CAUGHT CEMENT 6 BBLs INTO DISPLACEMENT
Pump Tail Cement	10/25/2008 05:37		8	175.7			890.0	690SKS/1.43 YIELD/ 6.19 GAL.SK
Drop Top Plug	10/25/2008 06:13							PLUG AWAY
Pump Displacement	10/25/2008 06:14		8				333.0	H2O/KCL

Sold To #: 338668

Ship To #: 2666578

Quote #:

Sales Order #:

6264034

SUMMIT Version: 7.20.130

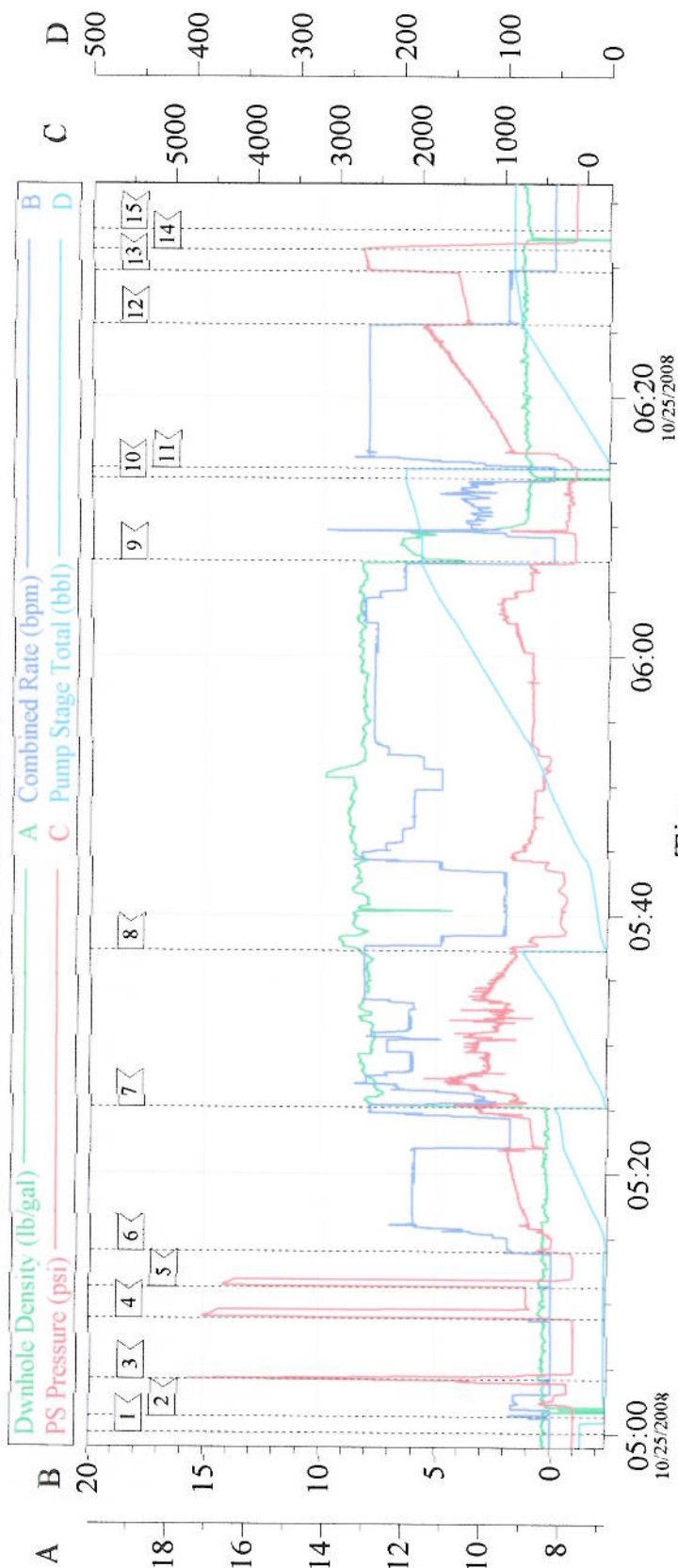
Saturday, October 25, 2008 07:06:00

Cementing Job Log

Activity Description	Date/Time	Cht #	Rate bbl/ min	Volume bbl		Pressure psig		Comments
				Stage	Total	Tubing	Casing	
Slow Rate	10/25/2008 06:25		2	84			1350. 0	SAW 35 BBLS OF SPACER TO SURFACE
Bump Plug	10/25/2008 06:29		2	94.7			1550. 0	PRESSURED UP TO 2650 PSI ON FLOATS
Check Floats	10/25/2008 06:31							FLOATS HELD. 1 BBL BACK
End Job	10/25/2008 06:32							GOOD CIRCULATION THROUGHOUT JOB
Rig-Down Equipment	10/25/2008 06:45							PIPE WAS NOT RECIPROCATED
Depart Location for Service Center or Other Site	10/25/2008 08:45							THANK YOU FOR USING HALLIBURTON CHRIS ROCKERT AND CREW

CHEVRON

4 1/2 LONGSTRING



Event Log			
1 START JOB	05:00:05	2 PRIME LINES	05:01:18
4 TEST LINES	05:08:50	3 TEST LINES	05:04:09
7 PUMP LEAD CEMENT	05:25:08	6 PUMP SPACER	05:13:58
10 DROP PLUG	06:13:45	9 PUMP TAIL CEMENT	05:37:14
13 BUMP PLUG	06:29:40	11 PUMP DISPLACEMENT	06:07:22
		12 SLOW RATE	06:25:34
		14 CHECK FLOATS	06:31:23
		15 END JOB	06:32:55

Customer: CHEVRON	Job Date: 10/25/08	Ticket #: 6264034
Well Desc: SKR 598-CV-20	Job Type: 4 1/2 LONGSTRING	ADC USED: YES
COMPANY REP: CHAD KAVANDER	CEMENTER: CHRIS ROCKERT	DRIVER: JON GREGORY