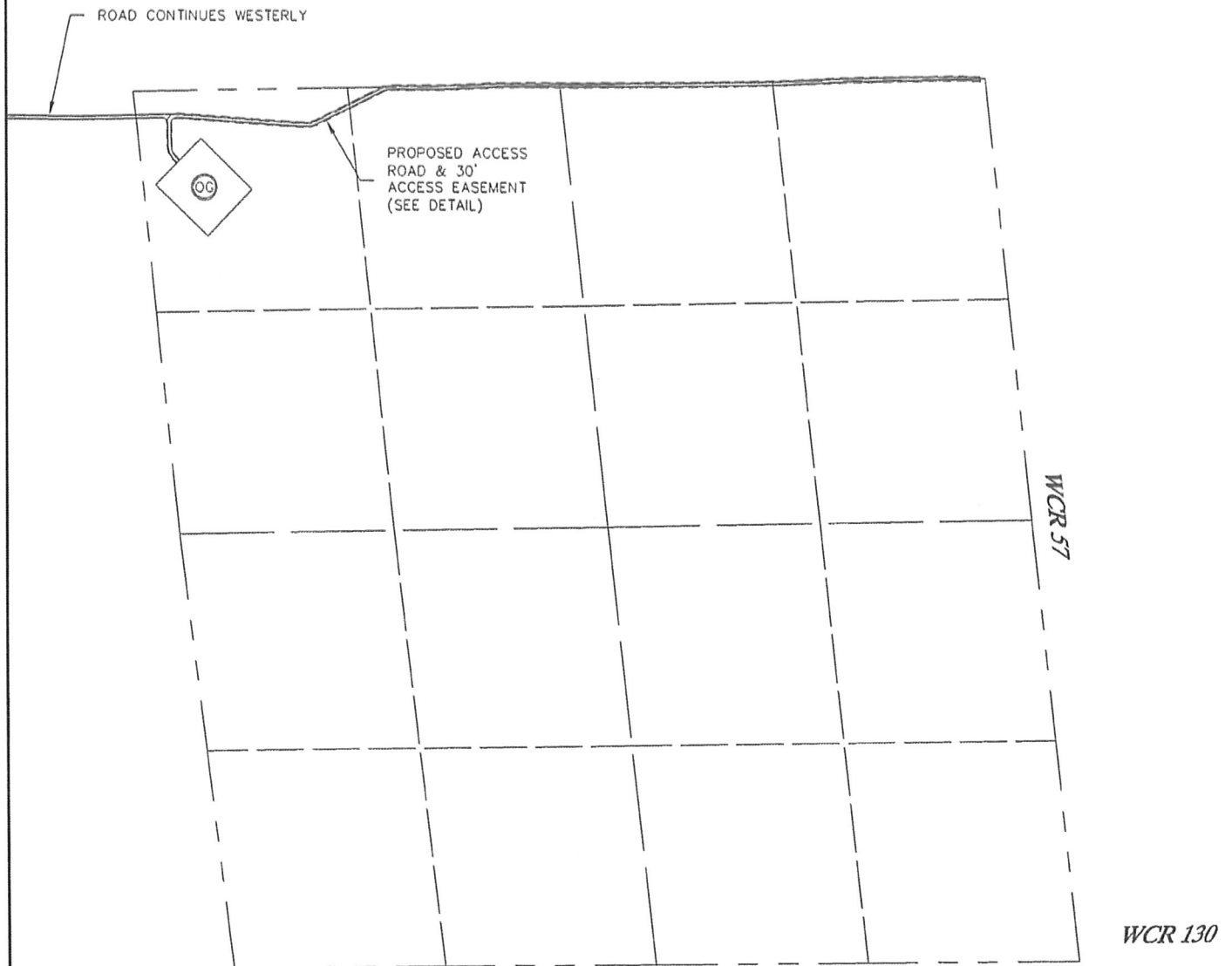


KING SURVEYORS, INC. 650 E. GARDEN DR. WINDSOR, CO 80550

PROPOSED ACCESS EASEMENT

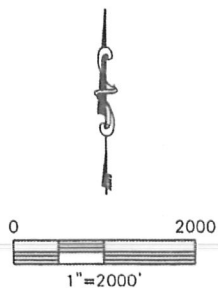
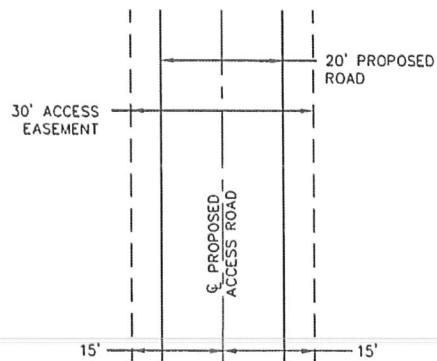
BEVJAC ZP10-1H

SECTION: 10
TOWNSHIP: 11N
RANGE: 64W



EASEMENT DETAIL

NOT TO SCALE

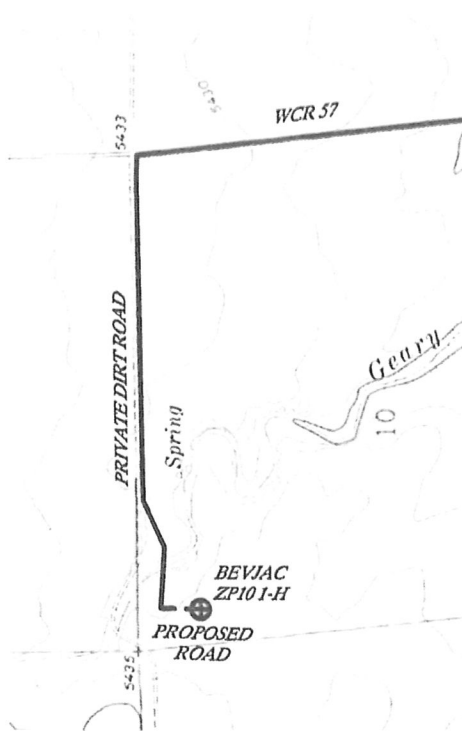


PROJECT#: 2011010

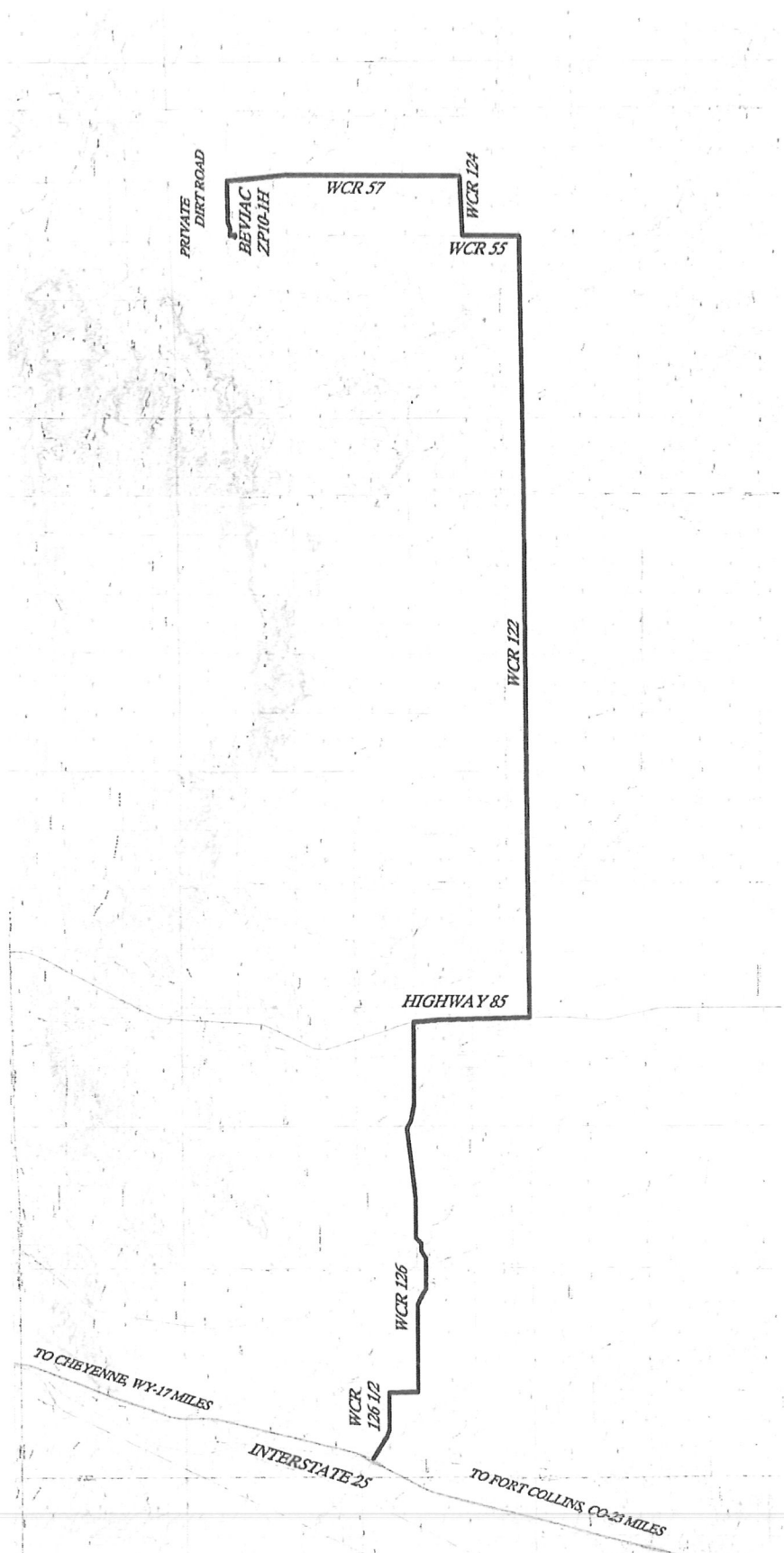
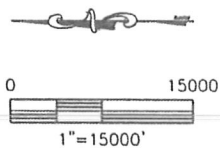
DRIVING DIRECTIONS

BEVJAC ZP10-1H

SECTION: 10
TOWNSHIP: 11N
RANGE: 64W



DETAIL
SCALE 1"=2000'



DRIVING DIRECTIONS

BEVJAC ZP10-1H

SECTION: 10
TOWNSHIP: 11N
RANGE: 64W

From I-25 take Exit 293 East, toward Carr, onto Weld County Road 126 ½ which eventually turns into Weld County Road 126. Travel approximately 7.8 miles (4.2 miles past Carr) to Highway 85. Turn right (South). Travel approximately 2 miles to Weld County Road 122. Turn left (East) onto Weld County Road 122. Travel 13.2 miles to Weld County Road 55. Turn left (North). Travel approximately 1 mile to Weld County Road 124. Turn right (East) and travel approximately 1 mile to Weld County Road 57. Turn left (North) and travel approximately 4 miles. Turn left (West) onto a field road and travel approximately 0.9 mile. Turn left (South), well pad is straight ahead.