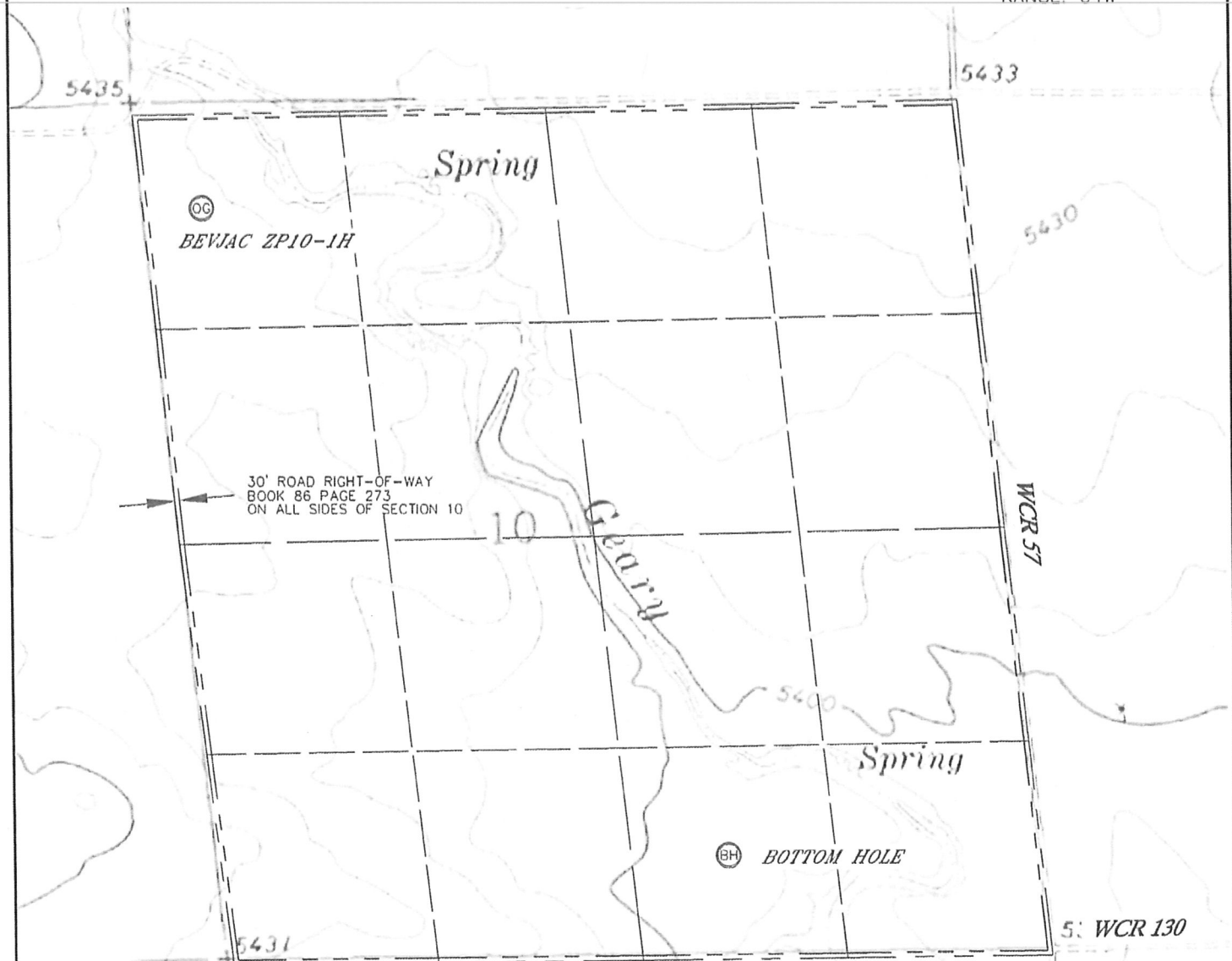


TOPOGRAPHIC MAP  
BEVJAC ZP10-1H

SECTION: 10  
TOWNSHIP: 11N  
RANGE: 64W



NOTES:

- 1) PIPELINE EASEMENT TO PHILLIPS PETROLEUM CO.; NO SPECIFIC LOCATION GIVEN (BOOK 648, REC. NO. 1569585)
- 2) PIPELINE EASEMENT TO PHILLIPS PETROLEUM CO.; NO SPECIFIC LOCATION GIVEN (BOOK 648, REC. NO. 1569586)
- 3) OIL & GAS PIPELINE EASEMENT TO WYOMING WESTERN OIL; NO SPECIFIC LOCATION GIVEN (REC. NO. 2648318)
- 4) ABSTRACT OF OIL AND GAS LEASE TO LONEWOLF ENERGY, INC. (REC. NO. 3647807)
- 5) SPECIAL WARRANTY DEED TO MAGNOLIA MINERALS TRUST, LLC FOR 75% OF BEVJAC'S INTEREST IN OIL, GAS AND OTHER MINERALS (REC. NO. 3691272)

LANDOWNER: BEVJAC LAND & CATTLE LLC

