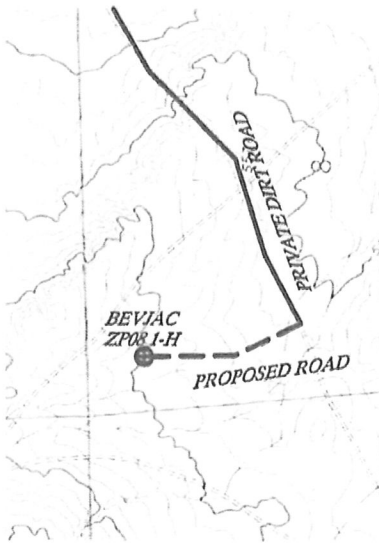


KING SURVEYORS, INC. 650 E. GARDEN DR. WINDSOR, CO 80550

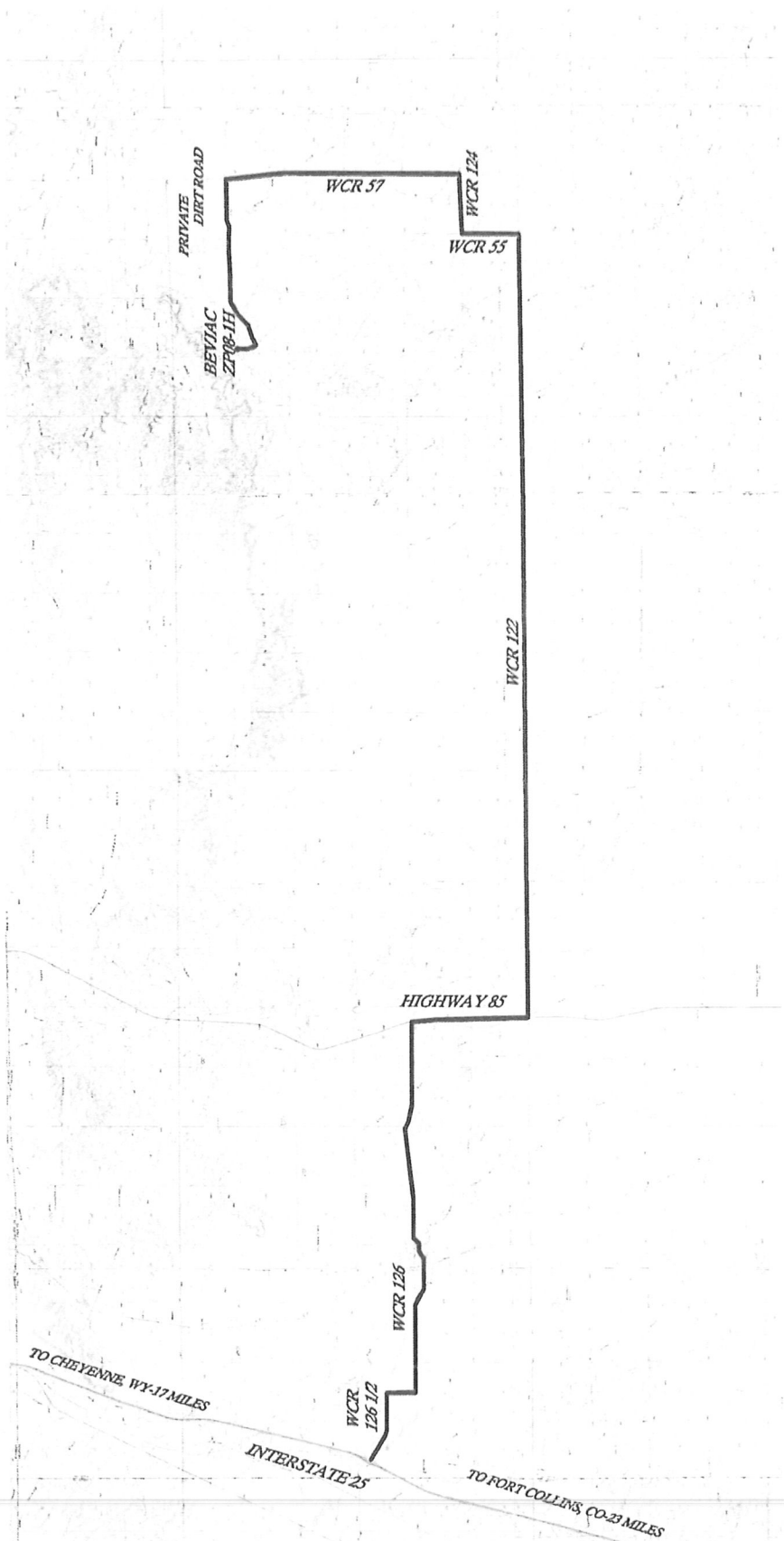
DRIVING DIRECTIONS

BEVJAC ZP08-1H

SECTION: 8
TOWNSHIP: 11N
RANGE: 64W



DETAIL
SCALE 1"=2000'



DRIVING DIRECTIONS

BEVJAC ZP08-1H

SECTION: 8
TOWNSHIP: 11N
RANGE: 64W

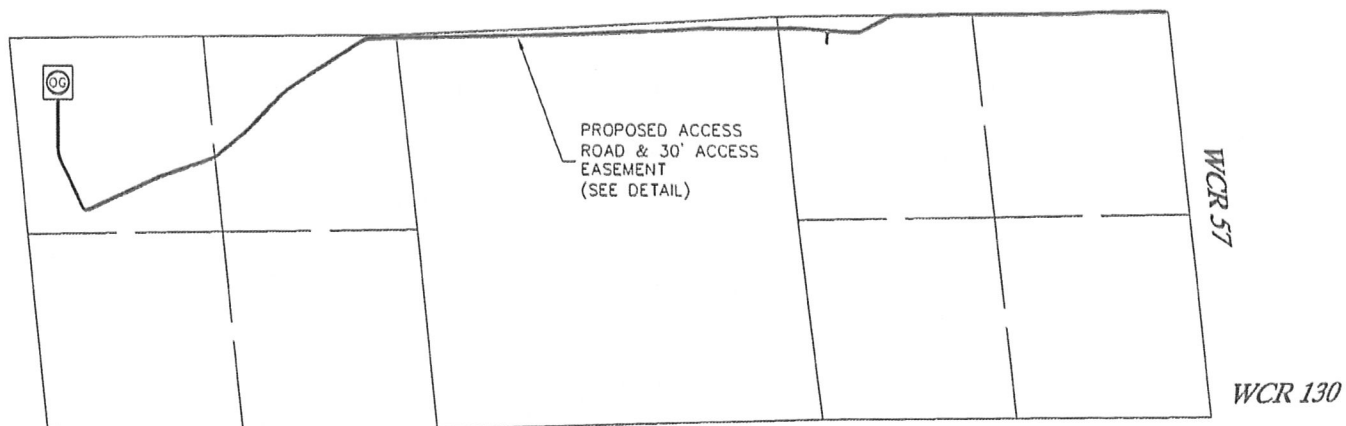
From I-25 take Exit 293 East, toward Carr, onto Weld County Road 126 ½ which eventually turns into Weld County Road 126. Travel approximately 7.8 miles (4.2 miles past Carr) to Highway 85. Turn right (South). Travel approximately 2 miles to Weld County Road 122. Turn left (East) onto Weld County Road 122. Travel 13.2 miles to Weld County Road 55. Turn left (North). Travel approximately 1 mile to Weld County Road 124. Turn right (East) and travel approximately 1 mile to Weld County Road 57. Turn left (North) and travel approximately 4 miles. Turn left (West) onto a field road and travel approximately 2.6 miles west and southwest to a field road. Turn right (Northwest) and travel 0.3 mile. Turn left (West), well pad is straight ahead.

KING SURVEYORS, INC. 650 E. GARDEN DR. WINDSOR, CO 80550

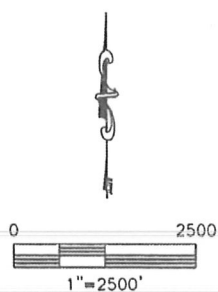
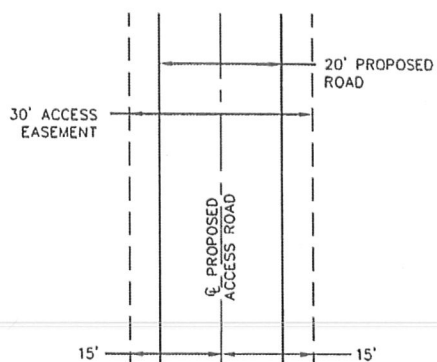
PROPOSED ACCESS EASEMENT

BEVJAC ZP08-1H

SECTION: 8
TOWNSHIP: 11N
RANGE: 64W



EASEMENT DETAIL NOT TO SCALE



PROJECT#: 2011010