

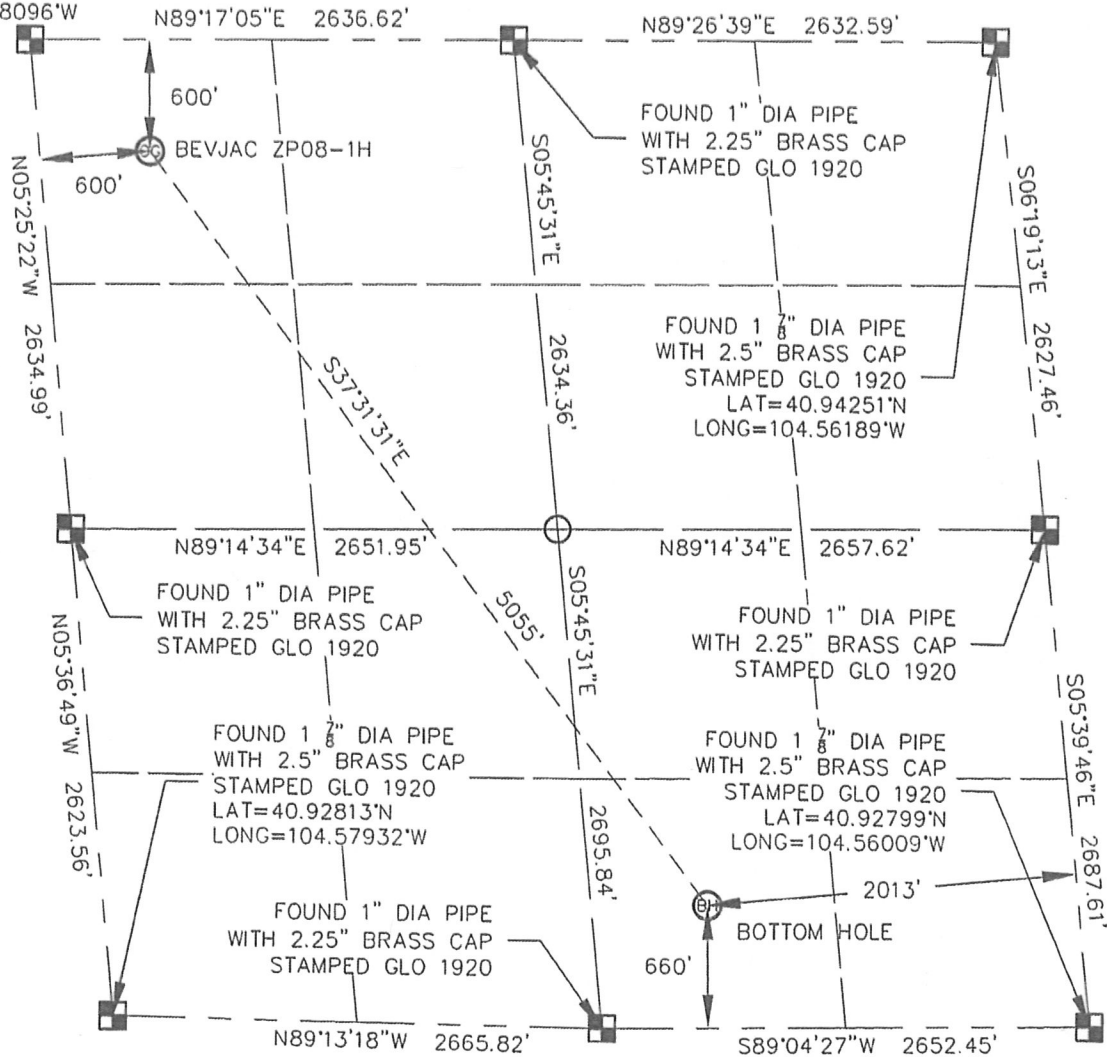
WELL LOCATION CERTIFICATE

BEVJAC ZP08-1H

SECTION: 8
TOWNSHIP: 11N
RANGE: 64W

FOUND 1 7/8" DIA PIPE
WITH 2.5" BRASS CAP
STAMPED GLO 1920
LAT=40.94251°N
LONG=104.58096°W

THIS MAP DOES NOT REPRESENT A BOUNDARY SURVEY



In accordance with a request from SCOTT LEWIS with NOBLE ENERGY INC., King Surveyors Inc. has determined the surface location of the BEVJAC ZP08-1H to be 600' from the NORTH line and 600' from the WEST line, and the bottom hole to be 660' from the SOUTH line and 2013' from the EAST line, as measured at right angles, from the section lines of Section 8, Township 11 North, Range 64 West of the Sixth Principal Meridian, County of Weld, State of Colorado.

I hereby state that this Well Location Certificate was prepared by me, or under my direct supervision, that the fieldwork was completed on 1-26-2011, for and on behalf of NOBLE ENERGY INC. That this is not a Land Survey Plat or an Improvement Survey Plat, and that it is not to be relied upon for establishment of fence, building, or other future improvement lines.

NOTE:

- 1) Bearings shown are Grid Bearings of the Colorado State Plane Coordinate System, North Zone, North American Datum 1983/2007. The lineal dimensions as contained herein are based upon the "U.S. Survey Foot."
- 2) Ground elevations are based on an observed GPS elevation (NAVD 1988 DATUM).
- 3) NEAREST EXISTING WELL: NO EXISTING WELLS IN THIS SECTION
- 4) IMPROVEMENTS: See LOCATION DRAWING exhibit for all visible improvements within 400' of disturbed area.
- 5) SURFACE USE: PASTURE
- 6) FIELD OPERATOR: DALLAS NIELSEN

SURFACE LOCATION	BOTTOM HOLE
LATITUDE: 40.94086°N	LATITUDE: 40.92977°N
LONGITUDE: 104.57859°W	LONGITUDE: 104.56761°W
PDOP: 1.5	
ELEV: 5605'	
1/4, 1/4: NW1/4 NW1/4	
NEAREST PROPERTY LINE: 600' NORTH & 600' WEST	

NOTE

According to Colorado law, you must commence any legal action based upon any defect in this W.L.C. within three years after you discover such defect. In no event, may any action based upon any defect in this survey be commenced more than ten years after the date of the certificate shown hereon. (13-80-105 C.R.S.)

- LEGEND**
- = FOUND ALIQUOT MONUMENT AS DESCRIBED
 - = CALCULATED POSITION
 - = SET ALIQUOT MONUMENT AS DESCRIBED

Michael Chad Dilko 2/21/2011
 Michael Chad Dilko On Behalf Of King Surveyors, Inc.
 Colorado, Licensed Professional Land Surveyor #38106