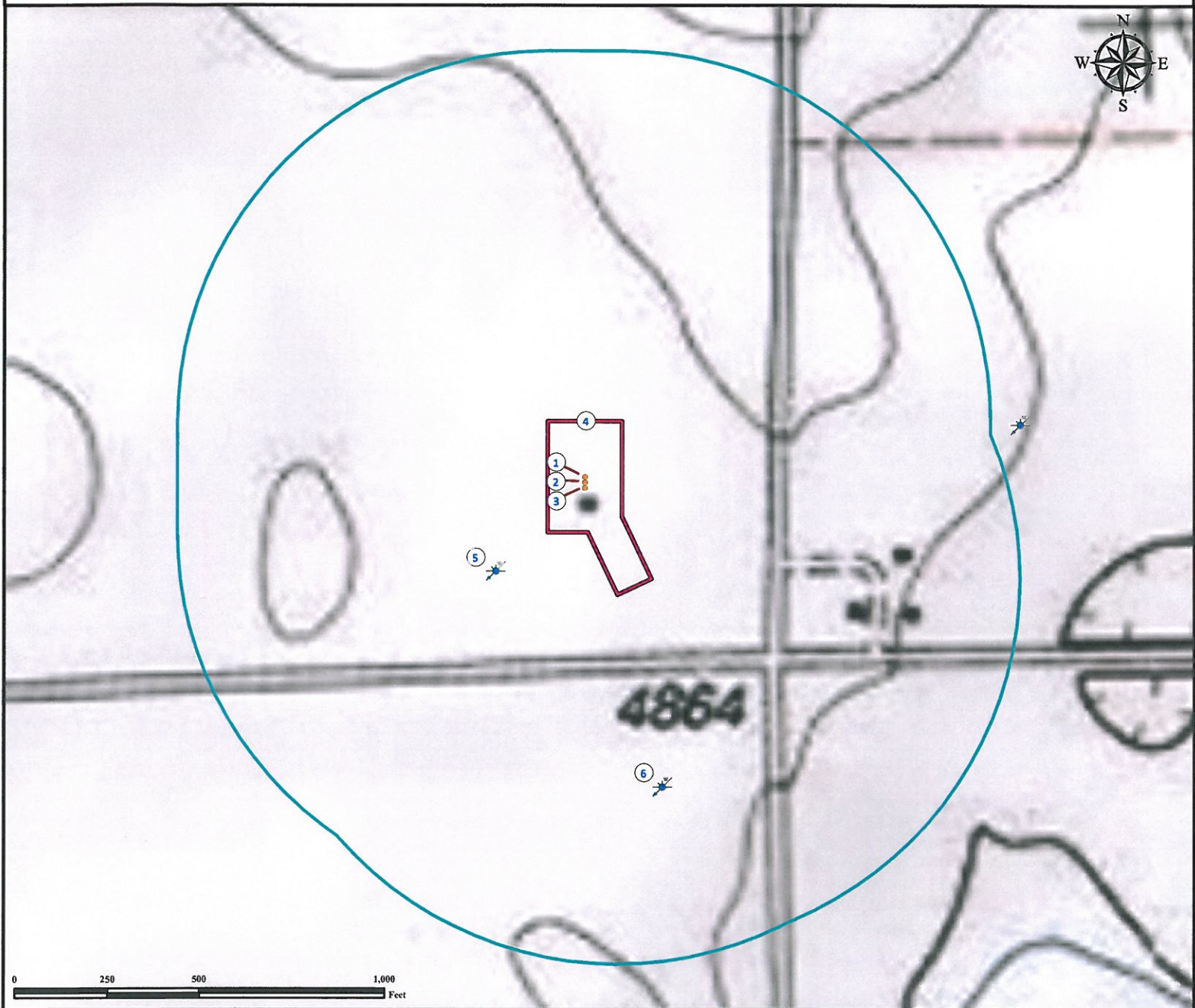


# Hydrology Map

## WELD COUNTY 9 - 28

### Multi Well Pad

SE¼ SE¼ SECTION 28, TOWNSHIP 7 NORTH, RANGE 64 WEST OF THE 6TH PRINCIPAL MERIDIAN



1. Proposed Well WELD COUNTY 9-28.
2. Proposed Well WELD COUNTY 20-28.
3. Proposed Well WELD COUNTY 16-28.
4. Operational Disturbance Area.
5. Water Well (#212000) is  $\pm 341'$  SW.

6. Water Well (#218505)  $\pm 862'$  SE.

#### Legend

- Water Well
- Disturbance Area
- Proposed Well
- 1000' Radius

#### Reference Location

\*\* All Measurements are Made from  
Reference Well WELD COUNTY 9-28\*\*  
Lat: 40.538306° Long:-104.547652° (NAD83)  
Elevation: 4871 Feet

Surface Use: Rangeland



Use our resources to find yours!

[www.petro-fs.com](http://www.petro-fs.com)  
(303) 928-7128

Field Date: 05/12/2011  
Drafting Date: 06/02/2011  
Drafter: ABD  
Checked By: BHF

#### Data Sources:

- TOPO courtesy USGS
- Water Wells courtesy of CDOWR

Prepared for:



**BAYSWATER**  
EXPLORATION AND PRODUCTION, LLC