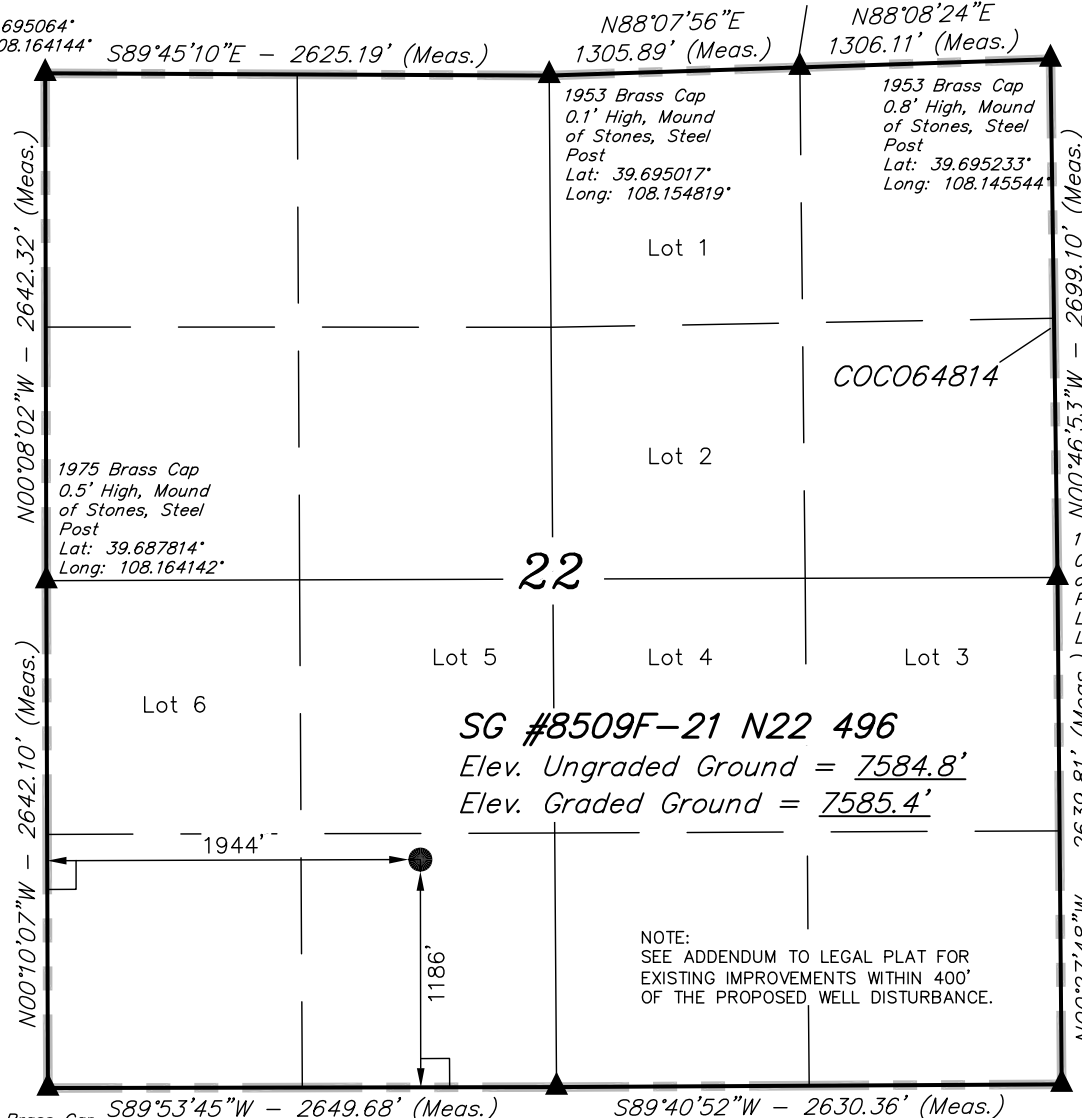


1953 Brass Cap
0.6' High, Mound
of Stones, Steel
Post
Lat: 39.695064°
Long: 108.164144°

T4S, R96W, 6th P.M.

1953 Brass Cap
Lat: 39.695125°
Long: 108.150181°



1953 Brass Cap
0.7' High, Mound
of Stones, Steel
Post
Lat: 39.680564°
Long: 108.164133°

1953 Brass Cap
0.5' High
Lat: 39.680561°
Long: 108.154725°

LEGEND:

└─┘ = 90° SYMBOL

● = PROPOSED WELL HEAD.

▲ = SECTION CORNERS LOCATED.

NOTE:
THE PROPOSED BOTTOM HOLE FOR THIS WELL
IS LOCATED IN THE NE 1/4 SE 1/4 OF SECTION
21, T4S, R96W, 6th P.M. AT A DISTANCE OF 1388' FSL
1295' FEL. IT BEARS N86°34'49"W 3244.92' FROM
THE PROPOSED WELL HEAD.

PDOP = 2.9

NAD 83 (SURFACE LOCATION)	
LATITUDE	= 39°41'01.74" (39.683817)
LONGITUDE	= 108°09'26.04" (108.157233)
NAD 27 (SURFACE LOCATION)	
LATITUDE	= 39°41'01.83" (39.683842)
LONGITUDE	= 108°09'23.75" (108.156597)

Encana OIL & GAS (USA) INC.

Well location, SG #8509F-21 N22 496 (SURFACE
LOCATION), located as shown in the SE 1/4 SW
1/4 of Section 22, T4S, R96W, 6th P.M., Garfield
County, Colorado.

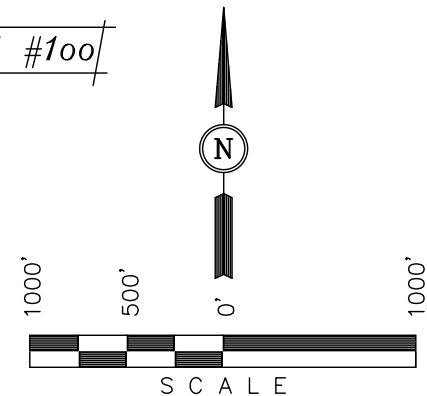
BASIS OF ELEVATION

BENCH MARK (H79) LOCATED IN THE NE 1/4 OF SECTION
35, T4S, R98W, 6th P.M. TAKEN FROM THE BULL FORK
QUADRANGLE, COLORADO, 7.5 MINUTE SERIES (TOPO
GRAPHICAL MAP) PUBLISHED BY THE UNITED STATES
DEPARTMENT OF THE INTERIOR, GEOLOGICAL SURVEY. SAID
ELEVATION IS MARKED AS BEING 8535 FEET.

BASIS OF BEARINGS

BASIS OF BEARINGS IS A G.P.S. OBSERVATION.

FIGURE #100



CERTIFICATE

THIS IS TO CERTIFY THAT THE ABOVE PLAT WAS PREPARED FROM
FIELD NOTES OF ACTUAL SURVEYS MADE BY ME OR UNDER MY
SUPERVISION AND THAT THE SAME ARE TRUE AND CORRECT TO THE
BEST OF MY KNOWLEDGE AND BELIEF.

REGISTERED LAND SURVEYOR
REGISTRATION NO. 17492
STATE OF COLORADO

REVISED: 12-14-10

UINTAH ENGINEERING & LAND SURVEYING
85 SOUTH 200 EAST - VERNAL, UTAH 84078
(435) 789-1017

SCALE 1" = 1000'	DATE SURVEYED: 08-03-10	DATE DRAWN: 11-23-10
PARTY B.H. B.J. C.H.	REFERENCES G.L.O. PLAT	
WEATHER COOL	FILE Encana OIL & GAS (USA) INC.	

T4S, R96W, 6th P.M.

1953 Brass Cap
0.6' High, Mound
of Stones, Steel
Post
Lat: 39.695064°
Long: 108.164144°

Encana OIL & GAS (USA) INC.

Well location, SG #8509F-21 N22 496 (TARGET
BOTTOM HOLE), located as shown in the NE 1/4
SE 1/4 of Section 21, T4S, R96W, 6th P.M.,
Garfield County, Colorado.

BASIS OF ELEVATION

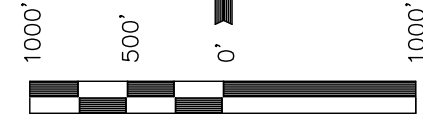
BENCH MARK (H79) LOCATED IN THE NE 1/4 OF SECTION
35, T4S, R98W, 6th P.M. TAKEN FROM THE BULL FORK
QUADRANGLE, COLORADO, 7.5 MINUTE SERIES (TOPO
GRAPHICAL MAP) PUBLISHED BY THE UNITED STATES
DEPARTMENT OF THE INTERIOR, GEOLOGICAL SURVEY. SAID
ELEVATION IS MARKED AS BEING 8535 FEET.

BASIS OF BEARINGS

BASIS OF BEARINGS IS A G.P.S. OBSERVATION.

FIGURE #1pp

1975 Brass Cap
0.5' High, Mound
of Stones, Steel
Post
Lat: 39.687814°
Long: 108.164142°



SCALE

CERTIFICATE

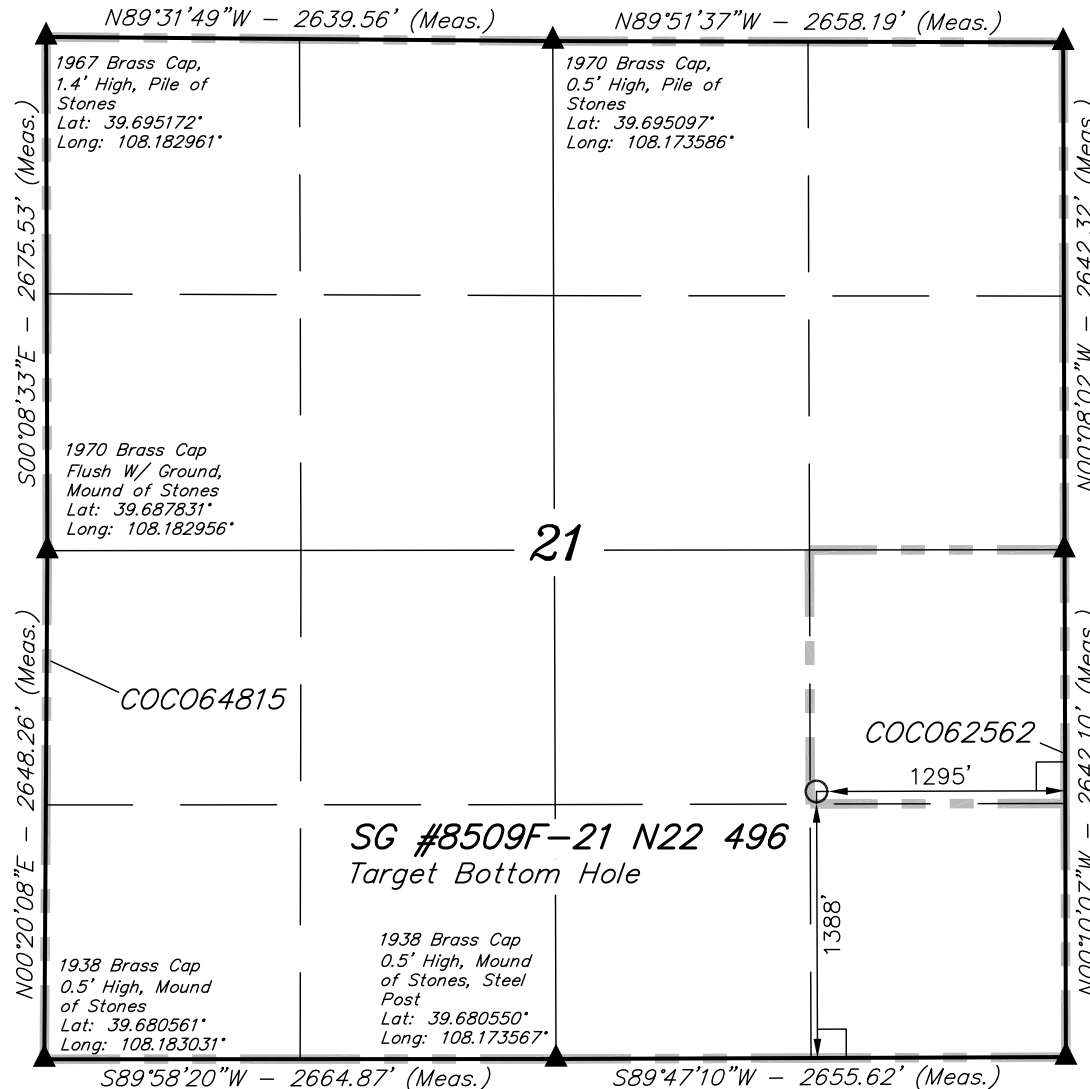
THIS IS TO CERTIFY THAT THE ABOVE PLAT WAS PREPARED FROM
FIELD NOTES OF ACTUAL SURVEYS MADE BY ME OR UNDER MY
SUPERVISION AND THAT THE SAME ARE TRUE AND CORRECT TO THE
BEST OF MY KNOWLEDGE AND BELIEF.

17492
REGISTERED LAND SURVEYOR
REGISTRATION NO. 17492
STATE OF COLORADO

REVISED: 12-14-10

UINTAH ENGINEERING & LAND SURVEYING
85 SOUTH 200 EAST - VERNAL, UTAH 84078
(435) 789-1017

SCALE 1" = 1000'	DATE SURVEYED: 08-03-10	DATE DRAWN: 11-23-10
PARTY B.H. B.J. C.H.	REFERENCES G.L.O. PLAT	
WEATHER COOL	FILE Encana OIL & GAS (USA) INC.	



SG #8509F-21 N22 496
Target Bottom Hole

NOTE:
THE PROPOSED BOTTOM HOLE FOR THIS WELL
BEARS N86°34'49"W 3244.92' FROM THE
PROPOSED WELL HEAD.

LEGEND:

- └─┘ = 90° SYMBOL
● = PROPOSED WELL HEAD.
▲ = SECTION CORNERS LOCATED.

NAD 83 (TARGET BOTTOM HOLE)
LATITUDE = 39°41'03.72" (39.684367)
LONGITUDE = 108°10'07.45" (108.168736)
NAD 27 (TARGET BOTTOM HOLE)
LATITUDE = 39°41'03.81" (39.684392)
LONGITUDE = 108°10'05.16" (108.168100)