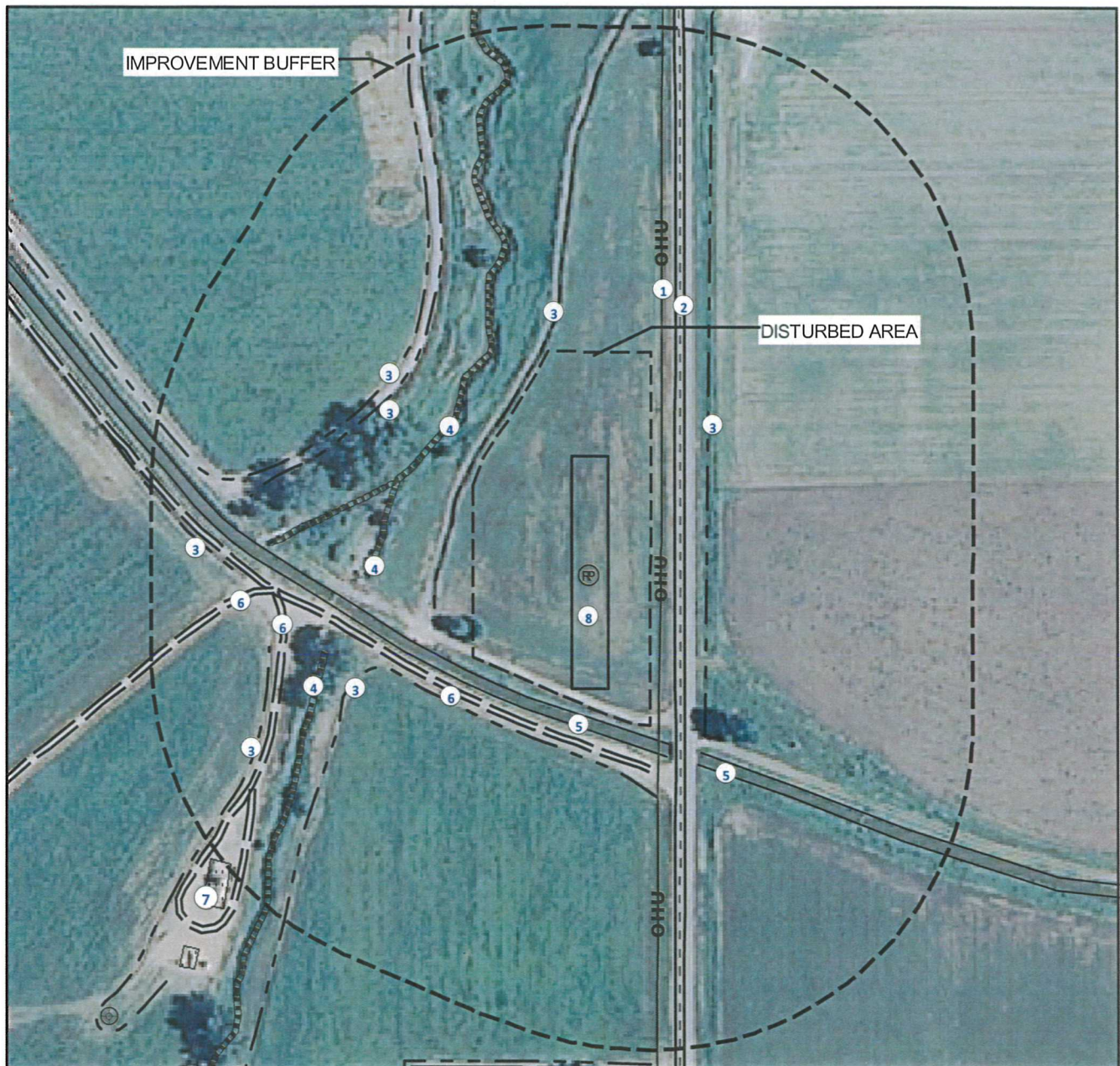


LOCATION DRAWING

BOBCAT C12-69HN FACILITY

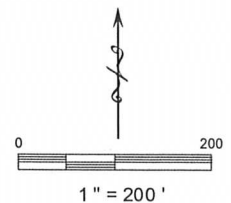
SECTION: 2
TOWNSHIP: 4N
RANGE: 64W



IMPROVEMENTS:

- 1 ABOVE GROUND POWER LINE 90' E.
- 2 COUNTY ROAD 59 107' E.
- 3 DIRT DITCHES 187' NW, 332' NW, 346' NW, 212' S, 407' SW, 148' E, 487' W.
- 4 CREEK 258' NW, 260' W, 341' SW.
- 5 CANAL 175' SW, 263' SE.
- 6 FIELD ROADS 206' S, 390' SW, 415' W.
- 7 PRODUCTION FACILITY IS 569' SW.
- 8 PROPOSED PRODUCTION FACILITY.

Reference Point:
Latitude: 40.337482
Longitude: -104.508633
Elevation: 4617'
PDOP: 1.89
Date: 3/29/11
Operator: Ben Milius
¼ ¼: SE¼ SE¼
FSL: 1201'
FEL: 113'
Distance to BOBCAT C12-69HN- 842'
Associated Proposed wells:
PANTHER C11-28D, PANTHER C11-27D,
PANTHER C02-23D
TOBY C12-79HN, BOBCAT C12-69HN
Associated Existing wells:
ROTHE 3



NEAREST: BUILDING 610' SW (BARN),
WEST EDGE OF PUBLIC ROAD
107' E (CR 59),
ABOVE GROUND UTILITY 90' E
(ABOVE GROUND POWER LINE),
RAILROAD 5280' + NE,
PROPERTY LINE 113' E