



# CEMENT BOND LOG

**Company** ENCANA OIL & GAS (USA)  
**Well** FOSTER 6-4-5  
**Field** WATTENBERG  
**County** WELD  
**State** COLORADO

**Company** ENCANA OIL & GAS (USA)  
**Well** FOSTER 6-4-5  
**Field** WATTENBERG  
**County** WELD  
**State** COLORADO

**Location:** API #: 05-123-31205-0000  
 SHL: 2618' FSL & 1320' FEL  
 SEC. 5 TWP. 1N RGE. 68W  
 Permanent Datum GROUND LEVEL Elevation 5037'  
 Log Measured From KELLY BUSHING = 12'  
 Drilling Measured From KELLY BUSHING

Other Services: NONE  
 Elevation: K.B. 5049', D.F. 5050', G.L. 5037'

Date	12 JULY 2011
Run Number	ONE
Depth Driller	1050'
Depth Logger	380'
Bottom Logged Interval	380'
Top Log Interval	SURFACE
Open Hole Size	12.25"
Type Fluid	WATER
Density / Viscosity	~8.34 LBS/GAL
Max. Recorded Temp.	N/A
Estimated Cement Top	SURFACE
Time Well Ready	N/A
Time Logger on Bottom	N/A
Equipment Number	10801W / PR01
Location	AULT, CO
Recorded By	B. MAYNARICH
Witnessed By	TOM FLYNN

Borehole Record		Tubing Record	
Run Number	Bit From To	Size	Weight From To
ONE	12.25" 0 1050'		

Casing Record	Size	Weight	Top	Bottom
Surface String	8.625"	24#	SURFACE	1050'
Prot. String				
Production String				
Liner				

<<< Fold Here >>>

All interpretations are opinions based on inferences from electrical or other measurements and we cannot and do not guarantee the accuracy or correctness of any interpretation, and we shall not, except in the case of gross or willful negligence on our part, be liable or responsible for any loss, costs, damages, or expenses incurred or sustained by anyone resulting from any interpretation made by any of our officers, agents or employees. These interpretations are also subject to our general terms and conditions set out in our current Price Schedule.

**Comments**

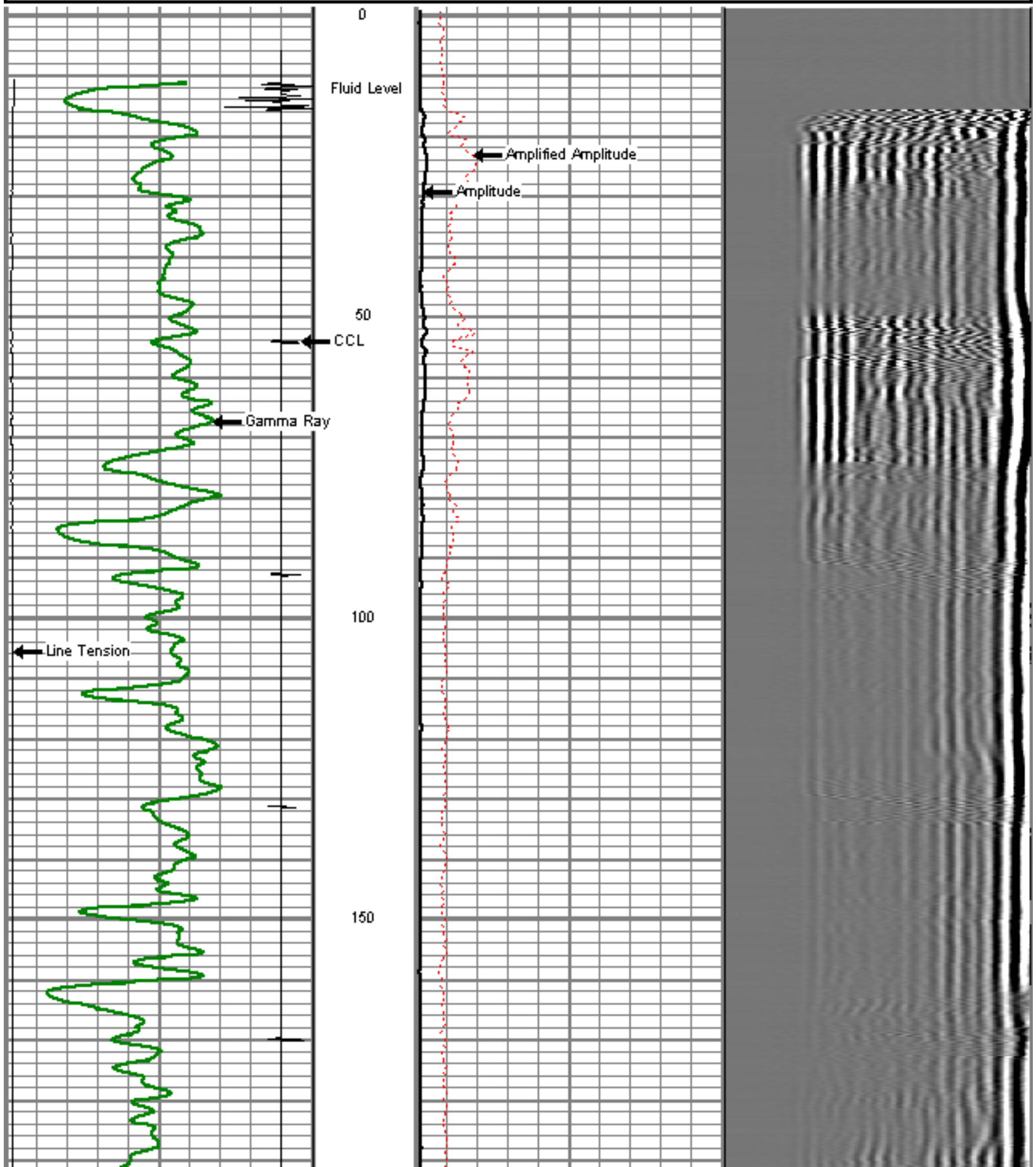
LOG CORRELATED TO MESA WIRELINE CBL DATED 7 APRIL, 2011

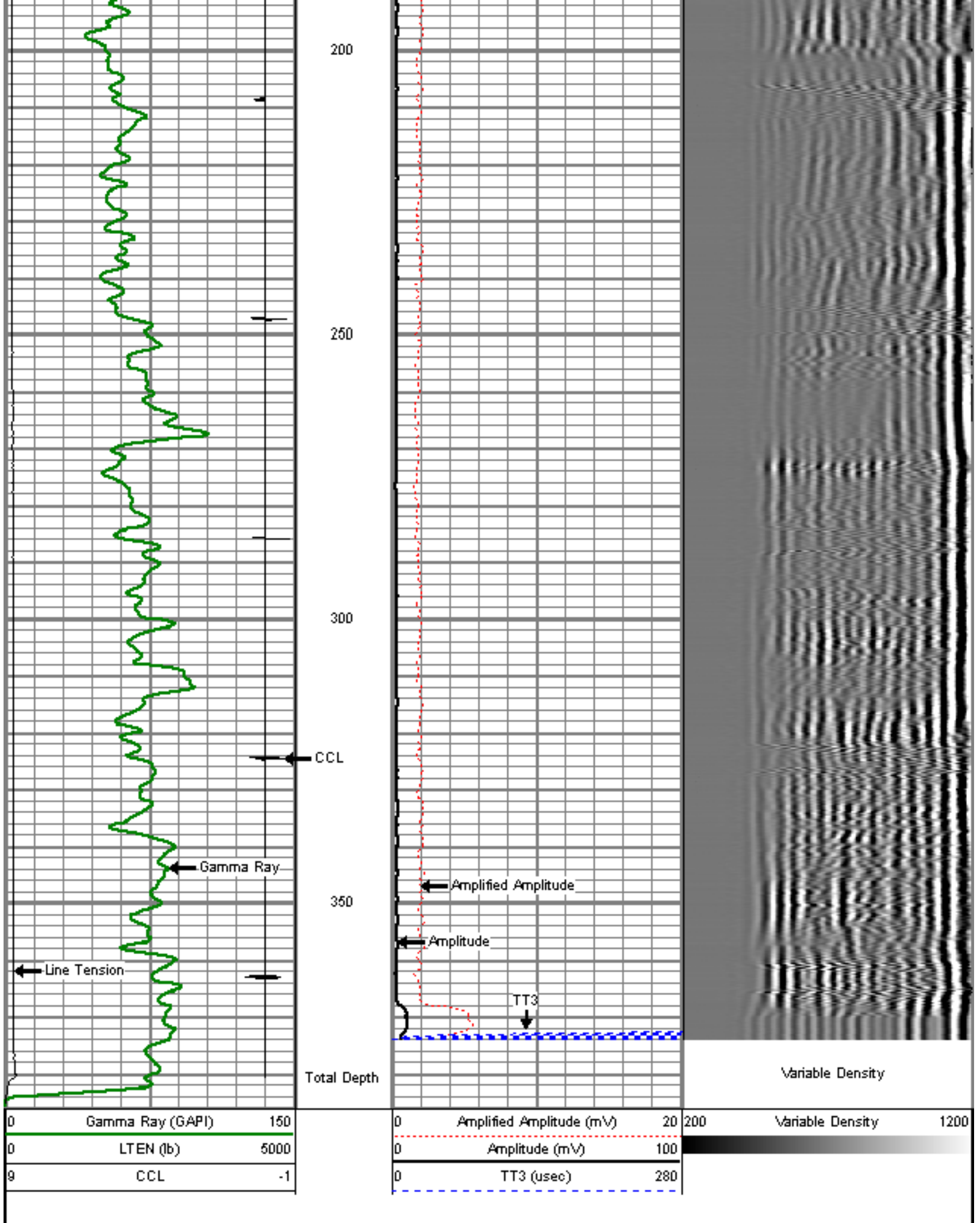
WE APPRECIATE YOUR BUSINESS, MESA WIRELINE LLC, GRAND JUNCTION CO. (970) 257-0458

0	Gamma Ray (GAPI)	150
0	LTEN (lb)	5000
9	CCL	-1

0	Amplified Amplitude (mV)	20
0	Amplitude (mV)	100
0	TT3 (usec)	280

200	Variable Density	1200
-----	------------------	------





Sensor	Offset (ft)	Schematic	Description	Len (ft)	OD (in)	Wt (lb)	
			titan	1.02	1.44	1.50	
			Centralizer-Probe (CENT-PROBE-1) Probe Bowspring Centralizer	2.88	2.75	10.00	
WVF3	11.67			CBL-Probe (DCBL_PRB_275_01) Probe 275 Dual Receiver Board	8.77	2.75	60.00
WVF5	10.67						
				Centralizer-Probe (CENT-PROBE-2) Probe Bowspring Centralizer	2.88	2.75	10.00
CCL	3.63			GR-Probe (GRCCCL_PRB_275_01) Probe 275 4 Channel Probe	4.54	2.75	30.00
GR	0.90						

Dataset: foster 6-45.db: field/well/run1/pass2  
 Total Length: 20.08 ft  
 Total Weight: 111.50 lb  
 O.D.: 2.75 in



Company	ENCANA OIL & GAS (USA)
Well	FOSTER 6-4-5
Field	WATTENBERG
County	WELD
State	COLORADO