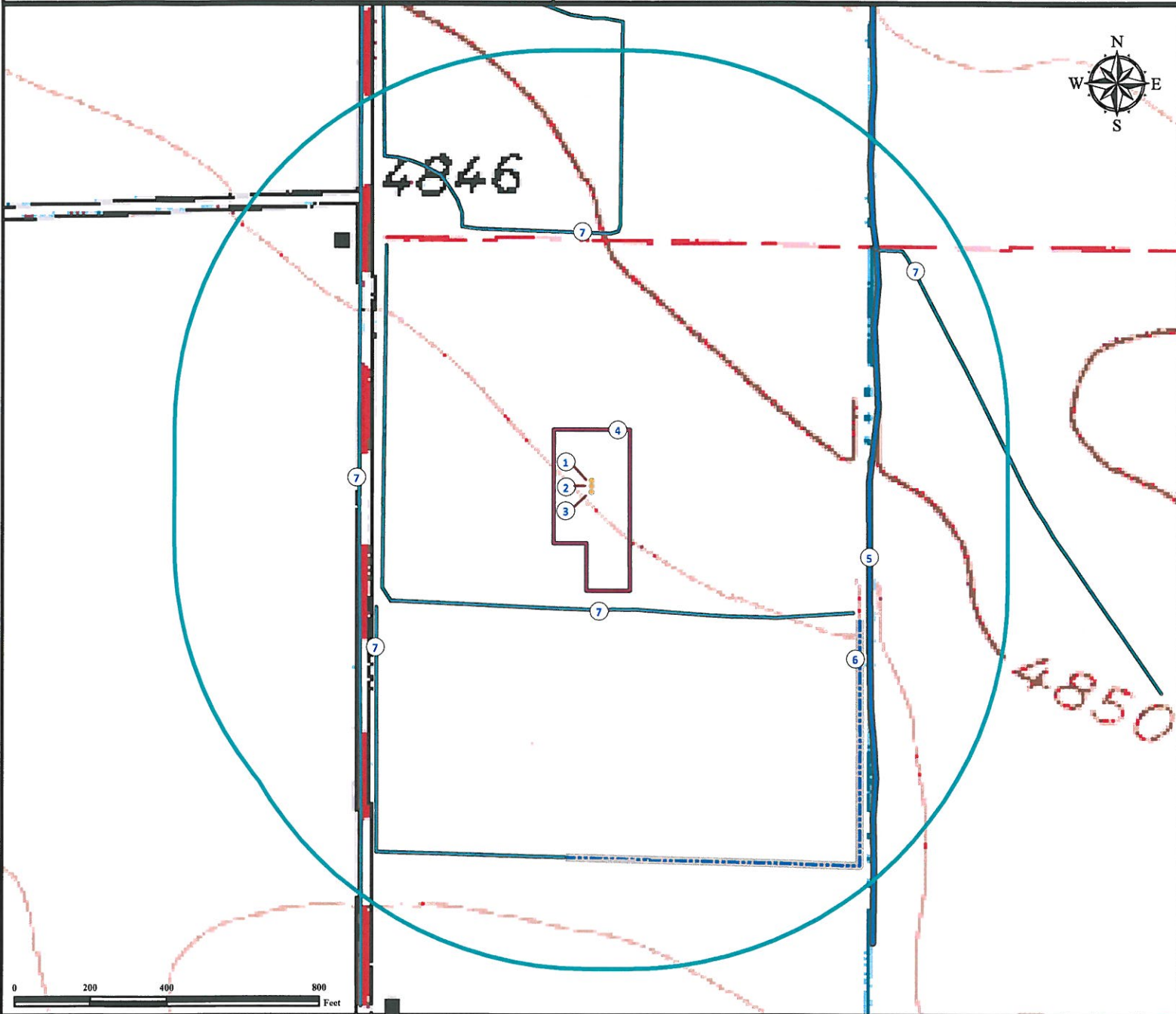


Hydrology Map

GEIS 19-32

Multi-Well Pad

NW¼ SW¼ SECTION 32, TOWNSHIP 7 NORTH, RANGE 65 WEST OF THE 6TH PRINCIPAL MERIDIAN



- | | | |
|------------------------------|----------------------------------|--|
| 1. Proposed well GEIS 11-32. | 4. Operational disturbance area. | 7. Ditch ditches are ±325' S, ±612' W, ±653' SW, ±670' N and ±984' NE. |
| 2. Proposed well GEIS 19-32. | 5. Canal is ±726' E. | |
| 3. Proposed well GEIS 14-32. | 6. Concrete ditch is ±786' SE. | |

Legend

- | | | | |
|-----------------|--------------------|---------|----------------------|
| ● Proposed Well | □ 1000' Radius | — Ditch | - - - Concrete Ditch |
| ☼ Water Well | □ Disturbance Area | — Canal | |

Reference Location

** All Measurements are Made from
Reference Well GEIS 19-32 **
Lat: 40.529642° Long: -104.694697° (NAD 83)
Elevation: 4839 Feet



Use our resources to find yours!
www.petro-fs.com
(303) 928-7128

Field Date: 05/18/2011
Drafting Date: 06/15/2011
Drafter: DMM
Checked By: BHF

Data Sources:
- Topo courtesy of USGS
- Water wells courtesy CDOWR

Prepared for:

