
ENCANA OIL & GAS (USA) INC. E-BIZ

**NPEF 15C-19-I30A-595
WILD CAT
Garfield County , Colorado**

Cement Surface Casing
19-Dec-2007

Job Site Documents

The Road to Excellence Starts with Safety

Sold To #: 340078	Ship To #: 340078	Quote #:	Sales Order #: 5556031
Customer: ENCANA OIL & GAS (USA) INC. E-BIZ		Customer Rep: CHILDERS, KURT	
Well Name: NPEF	Well #: 15C-19-I30A-595	API/UWI #: 05-045-15060	
Field: WILD CAT	City (SAP): PARACHUTE	County/Parish: Garfield	State: Colorado
Contractor: ENCANA		Rig/Platform Name/Num: PATTERSON 177	
Job Purpose: Cement Surface Casing			
Well Type: Development Well		Job Type: Cement Surface Casing	
Sales Person: MURPHY, SHAUNA		Srvc Supervisor: MANSPEAKER, GUY	MBU ID Emp #: 330171

Job Personnel

HES Emp Name	Exp Hrs	Emp #	HES Emp Name	Exp Hrs	Emp #	HES Emp Name	Exp Hrs	Emp #
CHASE, BRAD Waddell	19.0	422281	MANSPEAKER, GUY E	19.0	330171	PETERSON, NICK	19.0	435305
SUWEEK, TODD	19.0	430572	TALAROVICH, JEREMY Jay	19.0	425449	VANDERMEER, RODNEY E	19.0	363541

Equipment

HES Unit #	Distance-1 way	HES Unit #	Distance-1 way	HES Unit #	Distance-1 way	HES Unit #	Distance-1 way
10025012C	150 mile	10240238C	150 mile	10297346	150 mile	10567589C	150 mile
10829468	150 mile	10995027	150 mile				

Job Hours

Date	On Location Hours	Operating Hours	Date	On Location Hours	Operating Hours	Date	On Location Hours	Operating Hours
12-18-07	11	0	12-19-07	5	1			

TOTAL Total is the sum of each column separately

Job

Job Times

Formation Name	Top	Bottom	Called Out	Date	Time	Time Zone
Form Type	BHST		On Location	18 - Dec - 2007	13:30	MST
Job depth MD	2380.8 ft	Job Depth TVD	2380.8 ft	Job Started	19 - Dec - 2007	03:22 MST
Water Depth		Wk Ht Above Floor	4. ft	Job Completed	19 - Dec - 2007	04:33 MST
Perforation Depth (MD)	From	To	Departed Loc	19 - Dec - 2007	08:00	MST

Well Data

Description	New / Used	Max pressure psig	Size in	ID in	Weight lbf/ft	Thread	Grade	Top MD ft	Bottom MD ft	Top TVD ft	Bottom TVD ft
OPEN HOLE				13.5				.	2395.		2395.
SURFACE CASING	New	1616	9.625	8.921	36.	8 RD	J-55	.	2380.8		2380.8

Sales/Rental/3rd Party (HES)

Description	Qty	Qty uom	Depth	Supplier
PLUG,CMTG, TOP,9 5/8,HWE,8.16 MIN/9.06 MA	1	EA	2341.53	

Tools and Accessories

Type	Size	Qty	Make	Depth	Type	Size	Qty	Make	Depth	Type	Size	Qty	Make
Guide Shoe					Packer					Top Plug	9 5/8"	1	
Float Shoe					Bridge Plug					Bottom Plug			
Float Collar					Retainer					SSR plug set			
Insert Float										Plug Container	9 5/8"	1	
Stage Tool										Centralizers			

Miscellaneous Materials

Gelling Agt	Conc	Surfactant	Conc	Acid Type	Qty	Conc	%
Treatment Fld	Conc	Inhibitor	Conc	Sand Type	Size	Qty	

Fluid Data									
Stage/Plug #: 1									
Fluid #	Stage Type	Fluid Name	Qty	Qty uom	Mixing Density lbm/gal	Yield ft ³ /sk	Mix Fluid Gal/sk	Rate bbl/min	Total Mix Fluid Gal/sk
1	FreshWater Spacer		20.0	bbl	8.33	.0	.0	.0	
2	VersaCem GJC085	VERSACEM (TM) SYSTEM (452010)	336.0	sacks	12.3	2.41	13.93	6.0	.0
	0.125 lbm	POLY-E-FLAKE (101216940)							
	0.432 Gal	FRESH WATER							
3	VersaCem GJC013	VERSACEM (TM) SYSTEM (452010)	115.0	sacks	12.8	2.12	11.78	6.0	.0
	0.125 lbm	POLY-E-FLAKE (101216940)							
	0.347 Gal	FRESH WATER							
4	FreshWater Displacement		181	bbl	8.33	.0	.0	6.0	
Calculated Values		Pressures			Volumes				
Displacement	181.00	Shut In: Instant		Lost Returns	NO	Cement Slurry	187.64	Pad	
Top Of Cement	SURFACE	5 Min		Cement Returns	25	Actual Displacement	175.5	Treatment	
Frac Gradient		15 Min		Spacers	20	Load and Breakdown		Total Job	
Rates									
Circulating	RIG	Mixing	7	Displacement	9	Avg. Job	8		
Cement Left In Pipe	Amount	39.26 ft	Reason	Shoe Joint					
Frac Ring # 1 @	ID	Frac ring # 2 @	ID	Frac Ring # 3 @	ID	Frac Ring # 4 @	ID		
The Information Stated Herein Is Correct				Customer Representative Signature					

The Road to Excellence Starts with Safety

Sold To #: 340078	Ship To #: 340078	Quote #:	Sales Order #: 5556031
Customer: ENCANA OIL & GAS (USA) INC. E-BIZ		Customer Rep: CHILDERS, KURT	
Well Name: NPEF	Well #: 15C-19-I30A-595	API/UWI #: 05-045-15060	
Field: WILD CAT	City (SAP): PARACHUTE	County/Parish: Garfield	State: Colorado
Legal Description:			
Lat: N 0 deg. OR N 0 deg. 0 min. 0 secs.		Long: E 0 deg. OR E 0 deg. 0 min. 0 secs.	
Contractor: ENCANA		Rig/Platform Name/Num: PATTERSON 177	
Job Purpose: Cement Surface Casing			Ticket Amount:
Well Type: Development Well		Job Type: Cement Surface Casing	
Sales Person: MURPHY, SHAUNA		Srvc Supervisor: MANSPEAKER, GUY	MBU ID Emp #: 330171

Activity Description	Date/Time	Cht #	Rate bbl/min	Volume bbl		Pressure psig		Comments
				Stage	Total	Tubing	Casing	
Crew Leave Yard	12/18/2007 11:30							
Arrive At Loc	12/18/2007 15:30							
Assessment Of Location Safety Meeting	12/18/2007 15:35							
Other	12/18/2007 20:27							Pulled Equipment On Location
Safety Meeting - Pre Rig-Up	12/18/2007 20:45							
Rig-Up Equipment	12/18/2007 20:50							
Rig-Up Completed	12/18/2007 21:30							
Safety Huddle	12/19/2007 03:15							Safety Meeting With Rig Crew
Other	12/19/2007 03:16							Surface Set @2380.76' - 9 5/8" - 36#
Start Job	12/19/2007 03:22							
Other	12/19/2007 03:23		2	2			80.0	Fill Lines
Test Lines	12/19/2007 03:25		0.5	0.5			3500.0	
Pump Spacer 1	12/19/2007 03:27		2	20			70.0	FRESH WATER
Other	12/19/2007 03:32		7	17			255.0	PICK UP RATE
Pump Lead Cement	12/19/2007 03:34		7	144.2 2			265.0	336 SKS, 12.3 PPG, 2.41 FT3/SK, 13.93 GAL/SK
Pump Tail Cement	12/19/2007 03:53		7	43.42			210.0	115 SKS, 12.8 PPG, 2.12 FT3/SK, 11.78 GAL/SK
Drop Top Plug	12/19/2007 03:59							

Sold To # : 340078

Ship To # :340078

Quote # :

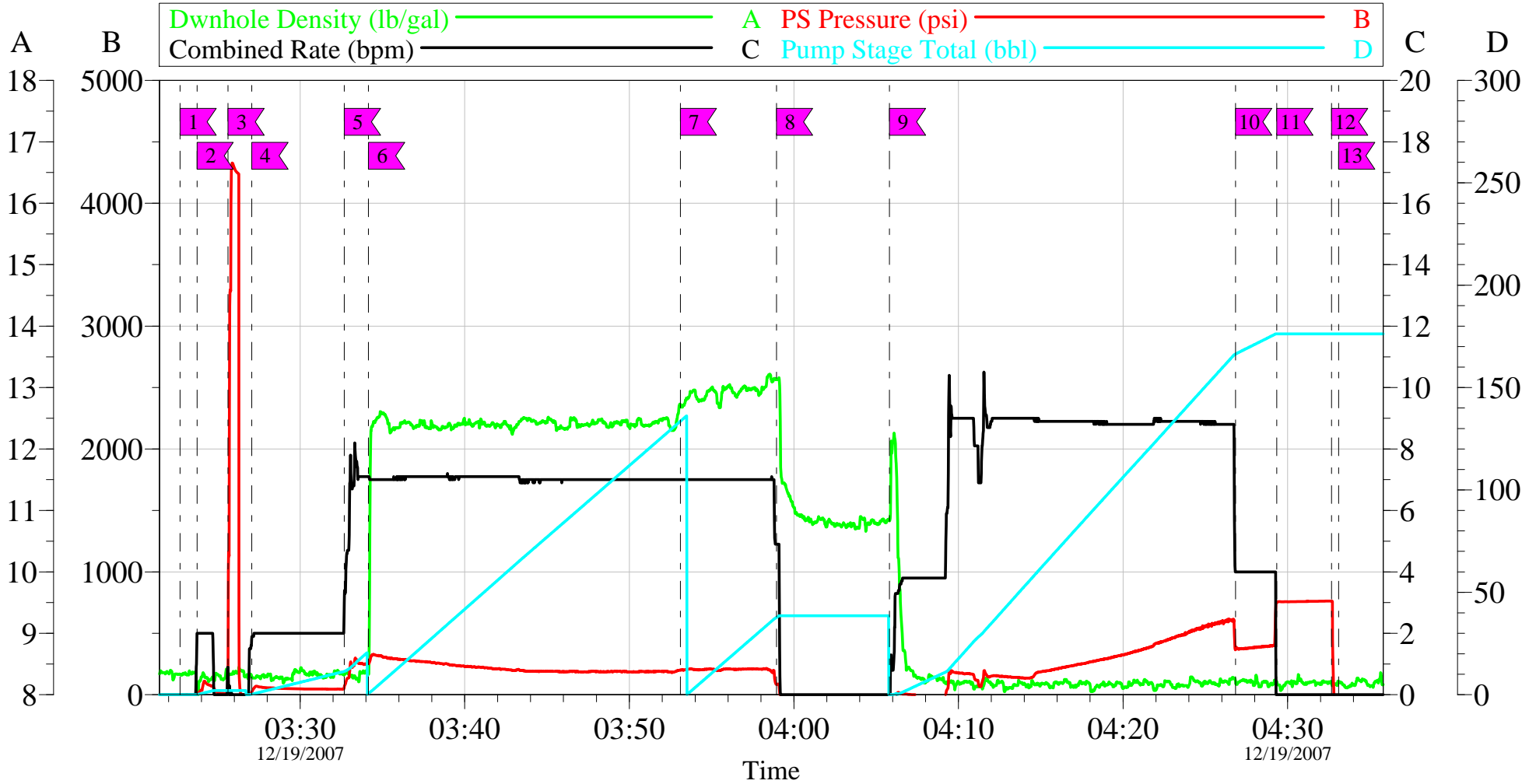
Sales Order # : 5556031

SUMMIT Version: 7.20.130

Friday, July 22, 2011 11:24:00

Activity Description	Date/Time	Cht #	Rate bbl/min	Volume bbl		Pressure psig		Comments
				Stage	Total	Tubing	Casing	
Pump Displacement	12/19/2007 04:05		9	181			600.0	FRESH WATER
Slow Rate	12/19/2007 04:26		4	165			385.0	
Bump Plug	12/19/2007 04:29		4	175.5			396.0	
Check Floats	12/19/2007 04:32						759.0	FLOAT HELD
End Job	12/19/2007 04:33							HAD GOOD CIRCULATION THROUGHOUT JOB. CIRCULATED 25 BBLS BACK TO SURFACE.

9 5/8" SURFACE



Local Event Log			
1 START JOB	03:22:42	2 FILL LINES	03:23:44
3 PRESSURE TEST LINES	03:25:37	4 PUMP WATER SPACER	03:27:04
5 PICKUP RATE	03:32:41	6 PUMP LEAD CEMENT	03:34:09
7 PUMP TAIL CEMENT	03:53:06	8 SHUTDOWN/DROP PLUG	03:58:56
9 PUMP H2O DISPLACEMENT	04:05:49	10 SLOW RATE	04:26:50
11 BUMP PLUG	04:29:20	12 CHECK FLOATS	04:32:40
13 END JOB	04:33:06		

Customer: ENCANA	Job Date: 12-19-07	Sales Order #: 5556031
Well Description: NPEF 15C-19-I30A-595	CEMENTER: GUY MANSPEAKER	ADC USED: YES
JOB TYPE: 9 5/8" SURFACE	DRIVER/TRUCK ROD	CO REP CURT CHILDERS

Sales Order #: 5556031	Line Item: 10	
Customer: ENCANA OIL & GAS (USA) INC. - EBUS		Job Type (BOM): CMT SURFACE CASING BOM
Customer Rep./Phone: CURT CHILDERS		API / UWI: (leave blank if unknown) 05-045-15060
Well Name: NPEF		Well Number: 15C-19-I30A-595
Well Type: Development Well	Well Country: United States of America	
H2S Present: No	Well State: Colorado	Well County: Garfield

KEY PERFORMANCE INDICATORS

General	
Survey Conducted Date	12/18/2007
The date the survey was conducted	

Cementing KPI Survey	
Total Operating Time (hours)	16
Total Operating Hours Including Rig-up, Pumping, Rig-down. Enter in decimal format.	
HSE Incident, Accident, Injury	No
HSE Incident, Accident, Injury. This should be recordable incidents only.	
Was the job purpose achieved?	Yes
Was the job delivered correctly as per customer agreed design?	
Operating Hours (Pumping Hours)	1
Total number of hours pumping fluid on this job. Enter in decimal format.	
Customer Non-Productive Rig Time (hrs)	0
Lost time due to Halliburton in the start, execution, or completion of an ordered service or product, or delays in a follow-on service. Enter in decimal format. 0 if none.	
Type of Rig Classification Job Was Performed	Drilling Rig (Portable)
Type Of Rig (classification) Job Was Performed On	
Number Of JSAs Performed	4
Number Of Jsas Performed	
Number of Unplanned Shutdowns	0
Unplanned shutdown is when injection stops for any period of time.	
Was this a Primary Cement Job (Yes / No)	Yes
Primary Cement Job= Casing job, Liner job, or Tie-back job.	
Did We Run Wiper Plugs?	Top
Did We Run Top And Bottom Casing Wiper Plugs?	
Mixing Density of Job Stayed in Designed Density Range (0-100%)	90

Sales Order #: 5556031	Line Item: 10	
Customer: ENCANA OIL & GAS (USA) INC. - EBUS		Job Type (BOM): CMT SURFACE CASING BOM
Customer Rep./Phone: CURT CHILDERS		API / UWI: (leave blank if unknown) 05-045-15060
Well Name: NPEF		Well Number: 15C-19-I30A-595
Well Type: Development Well	Well Country: United States of America	
H2S Present: No	Well State: Colorado	Well County: Garfield

Density Range defined as +/- .20 ppg. Calculation: Total BBLs cement mixed at designed density divided by total BBLs of cement multiplied by 100	
Was Automated Density Control Used? Was Automated Density Control (ADC) Used ?	Yes
Pump Rate (percent) of Job Stayed At Designed Pump Rate Pump Rate range defined as +/- 1bbl/min. Calculation: Total BBLs of fluid pumped at the designed rate divided by Total BBLs of fluid pumped, multiplied by 100	90
Nbr of Remedial Sqz Jobs Rqd - Competition Number Of Remedial Squeeze Jobs Required After Primary Job Performed By Competition	0
Nbr of Remedial Plug Jobs Rqd - HES Number Of Remedial Plug Jobs Needed After Primary Plug Pumped By HES	0
Nbr of Remedial Sqz Jobs Rqd - HES Number Of Remedial Squeeze Jobs Required After Primary Job Performed By HES	0