

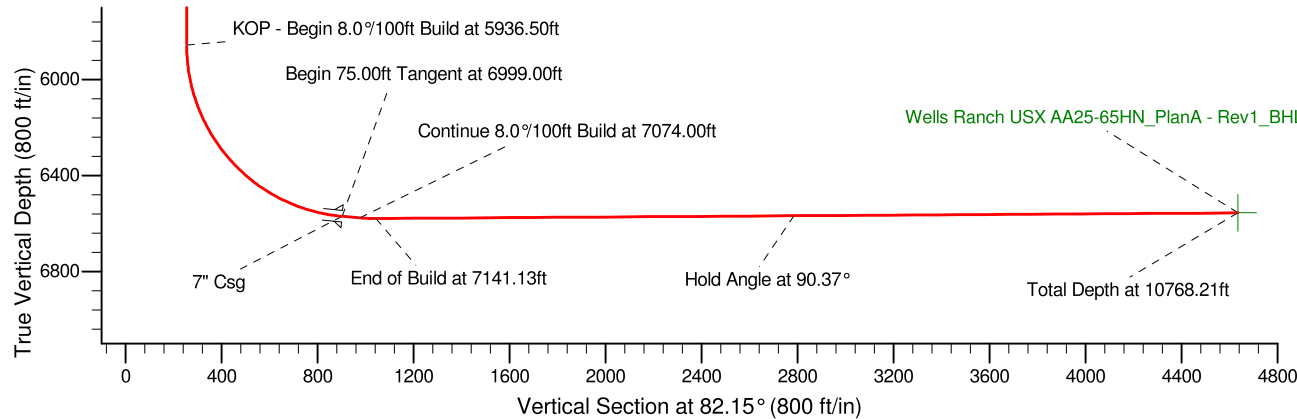
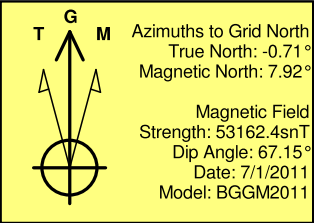
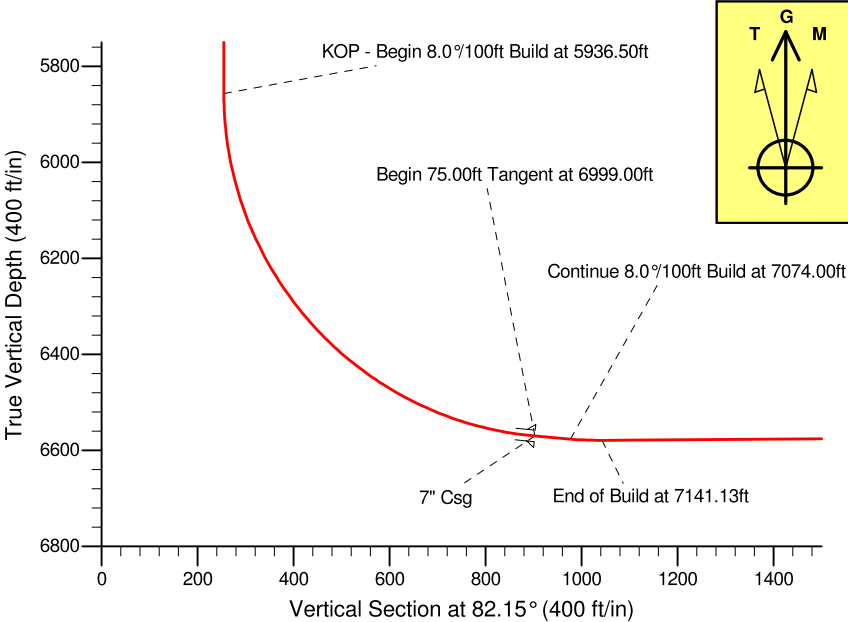
Project: Weld County, CO (NAD 83)
Site: Sec. 25-T6N-R63W (Wells Ranch 25 PAD)
Well: Wells Ranch USX AA25-65HN
Wellbore: Plan A
Design: Plan A - Rev 1 Proposal

Noble Energy

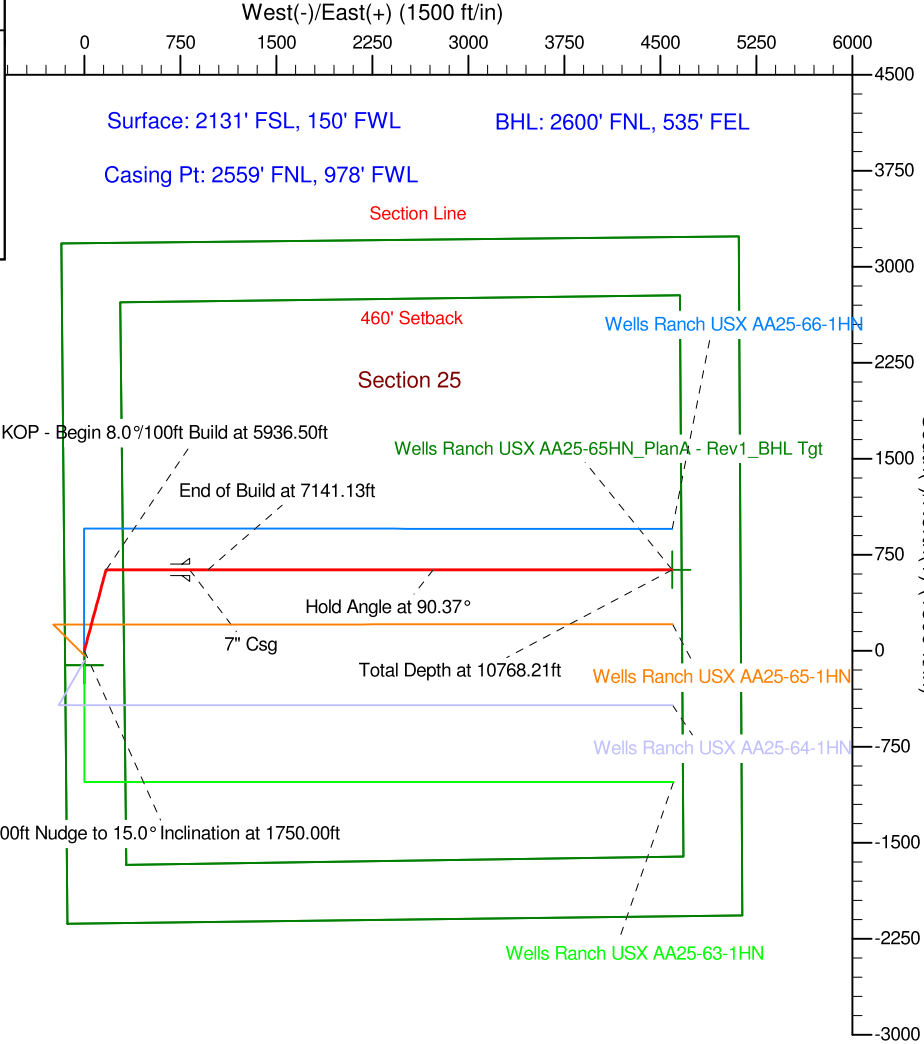


SECTION DETAILS

Sec	MD	Inc	Azi	TVD	+N/-S	+E/-W	DLeg	TFace	VSec	Target
1	0.00	0.00	0.00	0.00	0.00	0.00	0.00	0.00	0.00	
2	1750.00	0.00	0.00	1750.00	0.00	0.00	0.00	0.00	0.00	
3	2250.00	15.00	15.03	2244.31	62.85	16.88	3.00	15.03	25.31	
4	4229.23	15.00	15.03	4156.09	557.58	149.75	0.00	0.00	224.52	
5	4829.23	0.00	0.00	4749.26	633.00	170.00	2.50	180.00	254.89	
6	5936.50	0.00	0.00	5856.54	633.00	170.00	0.00	0.00	254.89	
7	6999.00	85.00	90.00	6570.01	633.00	823.78	8.00	90.00	902.53	
8	7074.00	85.00	90.00	6576.55	633.00	898.49	0.00	0.00	976.55	
9	7141.13	90.37	90.00	6579.26	633.00	965.54	8.00	0.00	1042.96	
10	10768.21	90.37	90.00	6555.84	633.00	4592.54	0.00	0.00	4635.96	Wells Ranch USX AA25-65HN_PlanA - Rev1_BHL Tgt



Wells Ranch USX AA25-65HN_PlanA - Rev1_BHL Tgt



WELL DETAILS: Wells Ranch USX AA25-65HN			
Ground Level:	4789.00		
Northing	Easting	Latitude	Longitude
1410880.16	3307742.20	40.456000	-104.394100

Plan: Plan A - Rev 1 Proposal (Wells Ranch USX AA25-65HN/Plan A)

Created By: Jay Lantz Date: 11:26, July 11 2011

OK to submit with 2A as per Noble Drilling 7/11/11 12:39