

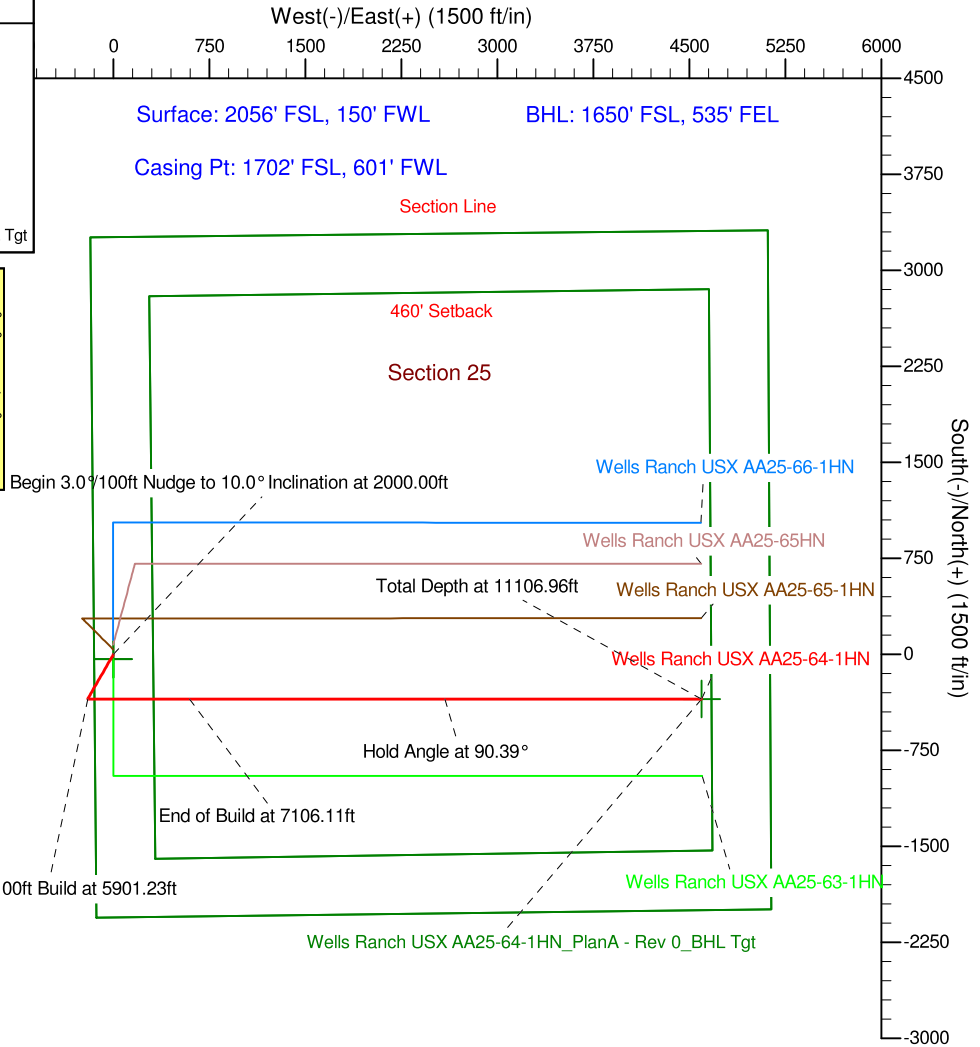
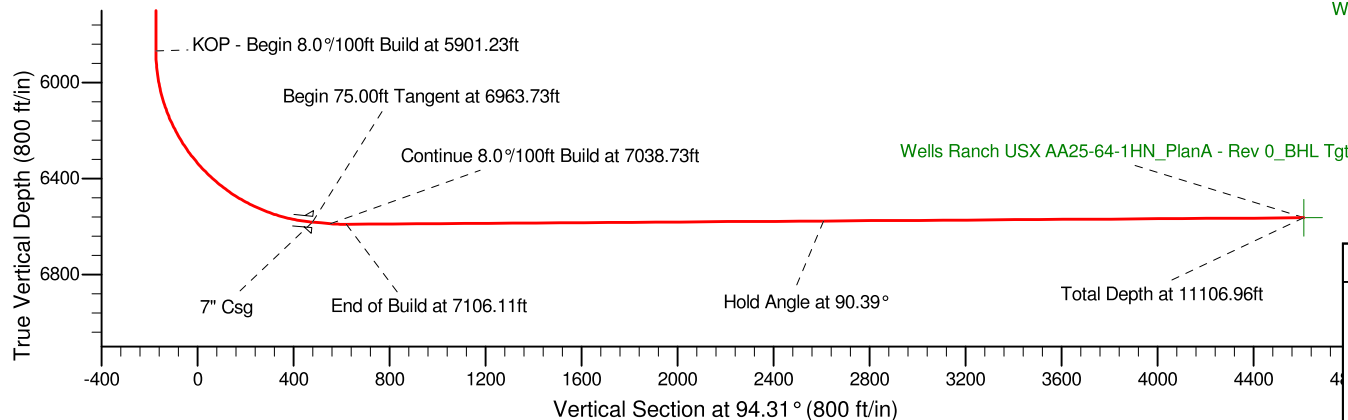
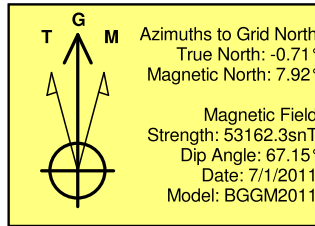
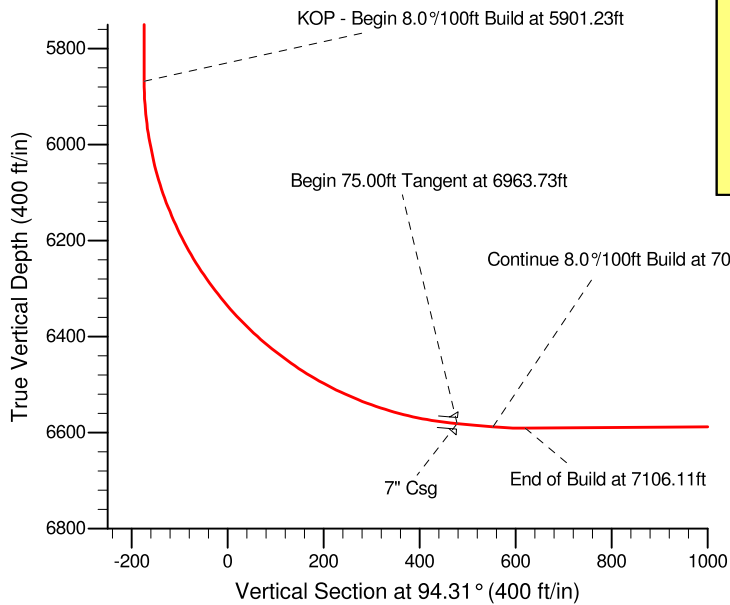
Project: Weld County, CO (NAD 83)  
Site: Sec. 25-T6N-R63W (Wells Ranch 25 PAD)  
Well: Wells Ranch USX AA25-64-1HN  
Wellbore: Plan A  
Design: Plan A - Rev 0 Proposal

# Noble Energy

**HALLIBURTON**  
Sperry Drilling

## SECTION DETAILS

Sec	MD	Inc	Azi	TVD	+N/-S	+E/-W	DLeg	TFace	VSec	Target
1	0.00	0.00	0.00	0.00	0.00	0.00	0.00	0.00	0.00	
2	2000.00	0.00	0.00	2000.00	0.00	0.00	0.00	0.00	0.00	
3	2333.33	10.00	209.96	2331.64	-25.14	-14.49	3.00	209.96	-12.56	
4	4272.18	10.00	209.96	4241.04	-316.83	-182.61	0.00	0.00	-158.27	
5	4672.18	0.00	0.00	4639.01	-347.00	-200.00	2.50	180.00	-173.34	
6	5901.23	0.00	0.00	5868.06	-347.00	-200.00	0.00	0.00	-173.34	
7	6963.73	85.00	90.00	6581.53	-347.00	453.78	8.00	90.00	478.59	
8	7038.73	85.00	90.00	6588.07	-347.00	528.49	0.00	0.00	553.09	
9	7106.11	90.39	90.00	6590.78	-347.00	595.79	8.00	0.00	620.20	
10	11106.96	90.39	90.00	6563.54	-347.00	4596.54	0.00	0.00	4609.62	Wells Ranch USX AA25-64-1HN_PlanA - Rev 0_BHL Tgt



## WELL DETAILS: Wells Ranch USX AA25-64-1HN

Ground Level:	4789.00		
Northing	Easting	Latitude	Longitude
1410803.66	3307743.15	40° 27' 20.844 N	104° 23' 38.760 W

Plan: Plan A - Rev 0 Proposal (Wells Ranch USX AA25-64-1HN/Plan A)

Created By: Jay Lantz

Date: 17:10, July 01 2011

**OK to submit with 2A as per Noble Drilling**  
**1/5/2011 09:35**