

LEASE: YELLOW CREEK FEDERAL

WELL #: 35-12-1

FIELD: Yellow Creek

LOCATION: 1,855' FNL & 725' FWL, SEC. 3, T1N-R98W

COUNTY: RIO BLANCO

ST: CO

API: 05-103-11106

Current WBD
7/20/2011

KB: 6,365'
GL: 6,340'
SPUD DATE: 11/22/2007
COMP DATE: 10/23/2008

(KB=GL+KB)

CONDUCTOR

SIZE: 20"
WT/GRD: 94#/ft J-55 csg
CSA: 60" Driller
CMT: 131 sks
CIRC: Yes
TOC: Surface
HOLE SIZE: 28" 0-60"

SURFACE CASING

SIZE: 9-5/8"
WT/GRD: 36#/ft K-55 LT & C
CSA: 3,356'
CMT: 1,485 sks
Lead 390sks Rockies LT (12.8 ppg, yld 2.09)
Tail 425 sks Rockies LT (12.3 ppg, yld 2.35)
Primary 670 sks Rockies LT (12.3 ppg, yld 2.35)

CIRC: Yes
TOC: 0'
HOLE SIZE: 14-3/4" 60'-3,365' (KB)

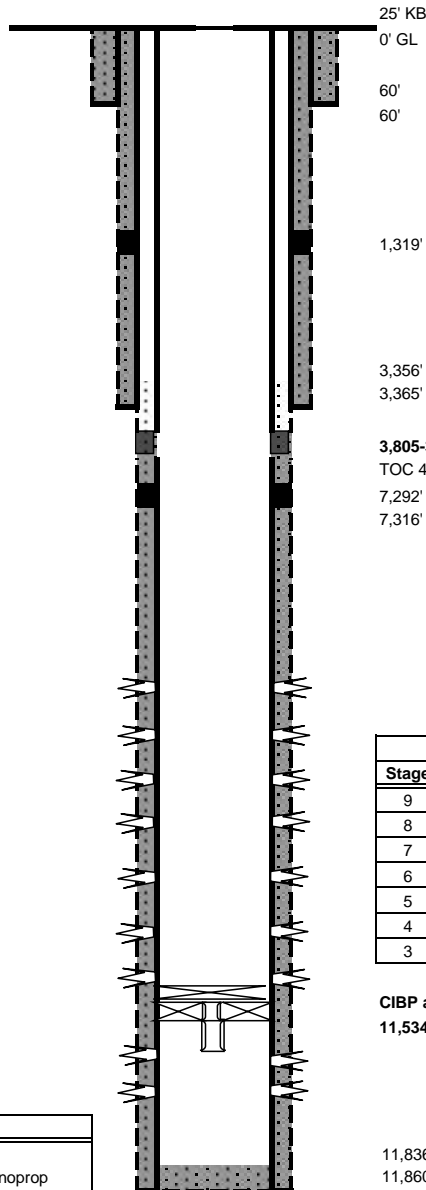
PRODUCTION CASING

SIZE: 4-1/2"
WT/GRD: 11.6#/ft P-110
CSA: 11,836" Driller
CMT: 2,148 sks
Primary 1,343 sks Poz G Gel (13.5 ppg, yld 1.6)
Lead 503 sks Poz Type III (11 ppg, yld 2.77)
Tail 302 sks Poz G Gel (12.7 ppg, yld 1.8)

CIRC: No
TOC: 4,150' CBL
HOLE SIZE: 8-3/4" 3,365'-7,316'
HOLE SIZE: 7-7/8" 7,316'-11,860'
Marker joints @ 6,560' & 10,366'

TUBING

SIZE: _____
WT/GRD: _____
DEPTH: _____
JTS: _____



25' KB
0' GL
60' 20" 94#/ft J-55 CSG
60' 28" Hole

1,319' DV Tool

3,356' 9-5/8" 36#/ft J-55 CSG
3,365' 14-3/4" Hole

3,805-3,810' External Casing Patch (4.09" min ID) with ported collar
TOC 4,150' CBL
7,292' DV Tool
7,316' 8-3/4" Hole

Completion		
Stage	Formation	Perforations
9	Williams Fork	9,695'-9,796'
8	Williams Fork	9,894'-10,026'
7	Cameo	10,116'-10,262'
6	Rollins	10,422'-10,512'
5	Upper Corcoran/Cozette	10,601'-10,775'
4	Middle Corcoran	10,903'-11,026'
3	Lower Corcoran	11,102'-11,251'

CIBP at 11,300'
11,534' Arrowset Packer

11,836' 4-1/2" 11.6#/ft P-110 CSG
11,860' 7-7/8" Hole (Driller)

PBTD: 11,300'
TD: 11,860'

Current Completion	
Stg 2	Upper Segro - 11,328' to 11,483' (29 Holes) 1,008 gal of 15% HCL, 65,880 lbs of 40/70 Econoprop 2,569 bbls of Slickwater
Stg 1	Lower Segro - 11,666' to 11,722' (17 Holes) 1,008 gal of 7.5% HCL, 44,004 lbs of 40/70 Econoprop 2,569 bbls of Slickwater

Updated: 6/28/2010
Author: AB
Engr: TWG