



Jenni Sudduth
Field & Permit Analyst

October 01, 2011

VIA CERTIFIED MAIL # 7010 2780 0003 0024 0341

Thomas Ranch, LLC
7900 CR 120
Carr, Colorado 80612

Re: Thomas Ranch 9-10-67 1H
Section 9 – Township 10N – Range 67W
Weld County, CO

Dear Gentlemen:

Pursuant to the Colorado Oil & Gas Commission ("COGCC") Rule 305(e)(1)(B), Chesapeake Operating, Inc. ("Chesapeake") intends to commence oil and gas operations in the above Section, Township and Range within the next 180 days, but no sooner than 30 days.

Such operations will include, but are not limited to, the construction and operation of certain road(s) and well site location as detailed on the enclosed plat. Please be aware that such well site location will be used for the drilling of multiple horizontal wells. Should circumstances arise that warrant changes to this well site location or road(s), contact will be made for discussion of said changes.

A representative from Chesapeake will attempt to make contact with you within 24 hours prior to entry onto the property. Should you have any questions, please contact:

Chesapeake Operating Inc.
Attention: Andrew Kopec, Field Representative
3001 E. Pershing, Suite 120
Cheyenne, WY 82001
(307) 333-3378

Sincerely yours,

A handwritten signature in blue ink that reads "Jenni Sudduth".

Jenni Sudduth

Enclosures

Chesapeake Energy Corporation
6100 N Western Ave. Oklahoma City, OK 73118
405.935.2165 • fax 405.849.2165 • Jenni.Sudduth@chk.com



Jenni Sudduth
Field & Permit Analyst

September 15, 2011

VIA CERTIFIED MAIL # 7010 2780 0003 0024 0358

Office of State Lands & Investments
Attn: Harold Kemp, Director
122 W. 25th Street
Herschler Building 3 – West
Cheyenne, Wyoming 82022

Re: State 16-10-67 1H
Section 16 – Township 10N – Range 67W
Weld County, CO

Dear Mr. Kemp:

Pursuant to the Colorado Oil & Gas Commission ("COGCC") Rule 305(e)(1)(B), Chesapeake Operating, Inc. ("Chesapeake") intends to commence oil and gas operations in the above Section, Township and Range within the next 180 days, but no sooner than 30 days.

Such operations will include, but are not limited to, the construction and operation of certain road(s) and well site location as detailed on the enclosed plat. Please be aware that such well site location will be used for the drilling of multiple horizontal wells. Should circumstances arise that warrant changes to this well site location or road(s), contact will be made for discussion of said changes.

A representative from Chesapeake will attempt to make contact with you within 24 hours prior to entry onto the property. Should you have any questions, please contact:

Chesapeake Operating Inc.
Attention: Andrew Kopec, Field Representative
3001 E. Pershing, Suite 120
Cheyenne, WY 82001
(307) 333-3378

Sincerely yours,

A handwritten signature in blue ink that reads "Jenni Sudduth".

Jenni Sudduth

Enclosures

Chesapeake Energy Corporation
6100 N Western Ave, Oklahoma City, OK 73118
405.935.2165 • fax 405.849.2165 • Jenni.Sudduth@chk.com



SECTION 9
THOMAS RANCH, LLC.

PROPOSED PAD SITE
DISTURBANCE BOUNDARY
5.25 ACRES

SECTION LINE
THOMAS RANCH 9-10-67 1H
N = 549855.28
E = 2165293.48
ELEV. = 5615.2'

PAD CORNER
ELEV. = 5615.5'

ELEV. = 5615.5' 175' 5.51' 200' ELEV. = 5616.4'

STATE 16-10-67 1H
N = 549825.31
E = 2165294.01
ELEV. = 5615.3'

PAD CORNER
ELEV. = 5614.4'

PAD CORNER
ELEV. = 5619.6'

ELEV. = 5619.1' PAD CORNER
ELEV. = 5624.8'

TWO-TRACK

FENCE LINE

SECTION CORNER

SECTION 8
THOMAS RANCH, LLC.

SCALE 1" = 200'
100' 0 200'

SECTION 16
THOMAS RANCH, LLC.

PROPOSED ROAD
30' R-O-W X 5969.7'
355.74 RODS

2834.0'
171.76 RODS

THOMAS RANCH
9-10-67 1H

LATITUDE (NAD 83)
NORTH 40.841212 DEG.
LONGITUDE (NAD 83)
WEST 104.903158 DEG.
LATITUDE (NAD 27)
NORTH 40.841229 DEG.
LONGITUDE (NAD 27)
WEST 104.902632 DEG.

NORTHING 549855.28
EASTING 2165293.48
ELEVATION 5615.2'
DATUM
SPCS CO. NORTH (NAD 27)

STATE 16-10-67 1H

LATITUDE (NAD 83)
NORTH 40.841129 DEG.
LONGITUDE (NAD 83)
WEST 104.903157 DEG.
LATITUDE (NAD 27)
NORTH 40.841147 DEG.
LONGITUDE (NAD 27)
WEST 104.902631 DEG.

NORTHING 549825.31
EASTING 2165294.01
ELEVATION 5615.3'
DATUM
SPCS CO. NORTH (NAD 27)

SURFACE USE TABLE	
PROPOSED PAD SITE	5.25 ACRES
THOMAS RANCH, INC. PROPOSED ROAD	171.76 RODS
LLOYD E. THOMAS FAMILY TRUST PROPOSED ROAD	160.35 RODS
MARJORIE J. THOMAS FAMILY TRUST PROPOSED ROAD	23.63 RODS
TOTAL PROPOSED ROAD RODS	355.74

TWO-TRACK

FENCE LINE



DRS
RIFFIN & ASSOCIATES, INC.
1414 ELK ST., ROCK SPRINGS, WY 82901
(307) 362-6028

DRAWN: 4/11/11 - NMM	SCALE: 1" = 200'
REVISED: 5/26/11 - MMM	DRG JOB NO. 18530
LOCATION MOVE	EXHIBIT B - SHEET 1 OF 2

CHESAPEAKE ENERGY, LLC.
PROPOSED PAD & ROAD
THOMAS RANCH 9-10-67 1H &
STATE 16-10-67 1H
SECTION 16, T10N, R67W
WELD COUNTY, COLORADO



SECTION 9
THOMAS RANCH, LLC.

SECTION LINE
THOMAS RANCH 9-10-67 1H
5.25 ACRES
PROPOSED PAD SITE
DISTURBANCE BOUNDARY

THOMAS RANCH 9-10-67 1H
N = 549855.28
E = 2165293.44
ELEV. = 5615.2'

PAD CORNER
ELEV. = 5615.3'

STATE 16-10-67 1H
N = 549825.31
E = 2165294.01
ELEV. = 5615.3'

PAD CORNER
ELEV. = 5615.3'

ELEV. = 5615.3'

ELEV. = 5615.3'

PAD CORNER
ELEV. = 5615.3'

WIND TRACK

FENCE LINE

SECTION CORNER

SECTION 8
THOMAS RANCH, LLC.

SECTION 17
THOMAS RANCH, LLC.

SECTION 16
THOMAS RANCH, LLC.

PROPOSED ROAD
30' R.O.W. X 5980.71
359.74' R.O.W.

171.76' R.O.W.

WIND TRACK

FENCE LINE

THOMAS RANCH
9-10-67 1H

LATITUDE (NAD 83)
NORTH 40.841212 DEG
LONGITUDE (NAD 83)
WEST 104.903158 DEG
LATITUDE (NAD 27)
NORTH 40.841229 DEG
LONGITUDE (NAD 27)
WEST 104.902632 DEG
NORTHING
549855.28
EASTING
2165293.48
ELEVATION
5615.2'
DATUM
SPCS CO. NORTH (NAD 27)

STATE 16-10-67 1H

LATITUDE (NAD 83)
NORTH 40.841129 DEG
LONGITUDE (NAD 83)
WEST 104.903157 DEG
LATITUDE (NAD 27)
NORTH 40.841147 DEG
LONGITUDE (NAD 27)
WEST 104.902631 DEG
NORTHING
549825.31
EASTING
2165294.01
ELEVATION
5615.3'
DATUM
SPCS CO. NORTH (NAD 27)

SURFACE USE TABLE	
PROPOSED PAD SITE	5.25 ACRES
THOMAS RANCH, INC. PROPOSED ROAD	171.76 ROADS
LLOYD E. THOMAS FAMILY TRUST PROPOSED ROAD	160.35 ROADS
MARLORE J. THOMAS FAMILY TRUST PROPOSED ROAD	23.63 ROADS
TOTAL PROPOSED ROAD ROADS	355.74



DRS
RIFFIN & ASSOCIATES, INC.
1414 ELK ST., ROCK SPRINGS, WY 82901
(307) 362-6028

DRAWN: 4/11/11 - MMM
REVISED: 5/28/11 - MMM
LOCATION MOVE

SCALE 1" = 200'



CHESAPEAKE ENERGY, LLC.
PROPOSED PAD & ROAD
THOMAS RANCH 9-10-67 1H &
STATE 16-10-67 1H
SECTION 16, T10N, R67W
WELD COUNTY, COLORADO

SCALE: 1" = 200'
DRG JOB No. 18530
EXHIBIT B - SHEET 2 OF 2



SECTION 9
THOMAS RANCH, LLC.

THOMAS RANCH 9-10-67 1H
N = 549855.28
E = 2165293.48
ELEV. = 5615.2'

SECTION LINE

STATE 16-10-67 1H
N = 549825.31
E = 2165294.01
ELEV. = 5615.3'

PROPOSED PAD SITE
DISTURBANCE BOUNDARY
3.25 ACRES

SECTION CORNER

284.0'
171.76 RODS

TWO-TRACK

OWNERSHIP LINE

SECTION 16
THOMAS RANCH, LLC.

SECTION 16
LLOYD E. THOMAS FAMILY TRUST

PROPOSED ROAD
30' R-O-W X 3869.7'
355.74 RODS

2645.8'
160.35 RODS

STATE 10-67 28-1H
ACCESS ROAD

FENCE LINE

SEE DETAIL

23.390
23.63 RODS

SECTION CORNER

SECTION 8
THOMAS RANCH, LLC.

THOMAS RANCH
9-10-67 1H
LATITUDE (NAD 83)
NDRTH 40.841212 DEG.
LONGITUDE (NAD 83)
WEST 104.903158 DEG.
LATITUDE (NAD 27)
NORTH 40.841229 DEG.
LONGITUDE (NAD 27)
WEST 104.902632 DEG.
NORTHING
549855.28
EASTING
2165293.48
ELEVATION
5615.2'
DATUM
SPCS CO. NORTH (NAD 27)

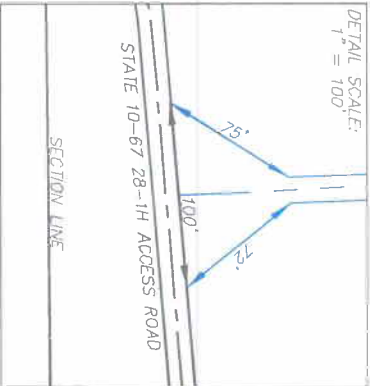
STATE 16-10-67 1H
LATITUDE (NAD 83)
NORTH 40.841129 DEG.
LONGITUDE (NAD 83)
WEST 104.903157 DEG.
LATITUDE (NAD 27)
NORTH 40.841147 DEG.
LONGITUDE (NAD 27)
WEST 104.902631 DEG.
NORTHING
549825.31
EASTING
2165294.01
ELEVATION
5615.3'
DATUM
SPCS CO. NORTH (NAD 27)

SECTION 17
THOMAS RANCH, LLC.

SECTION 20
M. J. DIEHL & SONS, INC.

SECTION 21

MARJORIE J. THOMAS FAMILY TRUST



SURFACE USE TABLE	
PROPOSED PAD SITE	5.25 ACRES
THOMAS RANCH, INC. PROPOSED ROAD	171.76 RODS
LLOYD E. THOMAS FAMILY TRUST PROPOSED ROAD	160.35 RODS
MARJORIE J. THOMAS FAMILY TRUST PROPOSED ROAD	23.63 RODS
TOTAL PROPOSED ROAD RODS	355.74

SCALE 1" = 500'
250' 0 500'

RIFFIN & ASSOCIATES, INC.
1414 ELK ST., ROCK SPRINGS, WY 82901
(307) 362-6028

CHESAPEAKE ENERGY, LLC.
PROPOSED PAD & ROAD
THOMAS RANCH 9-10-67 1H &
STATE 16-10-67 1H &
SECTION 16, T10N, R67W
WELD COUNTY, COLORADO

DRAWN: 4/11/11 - MMM

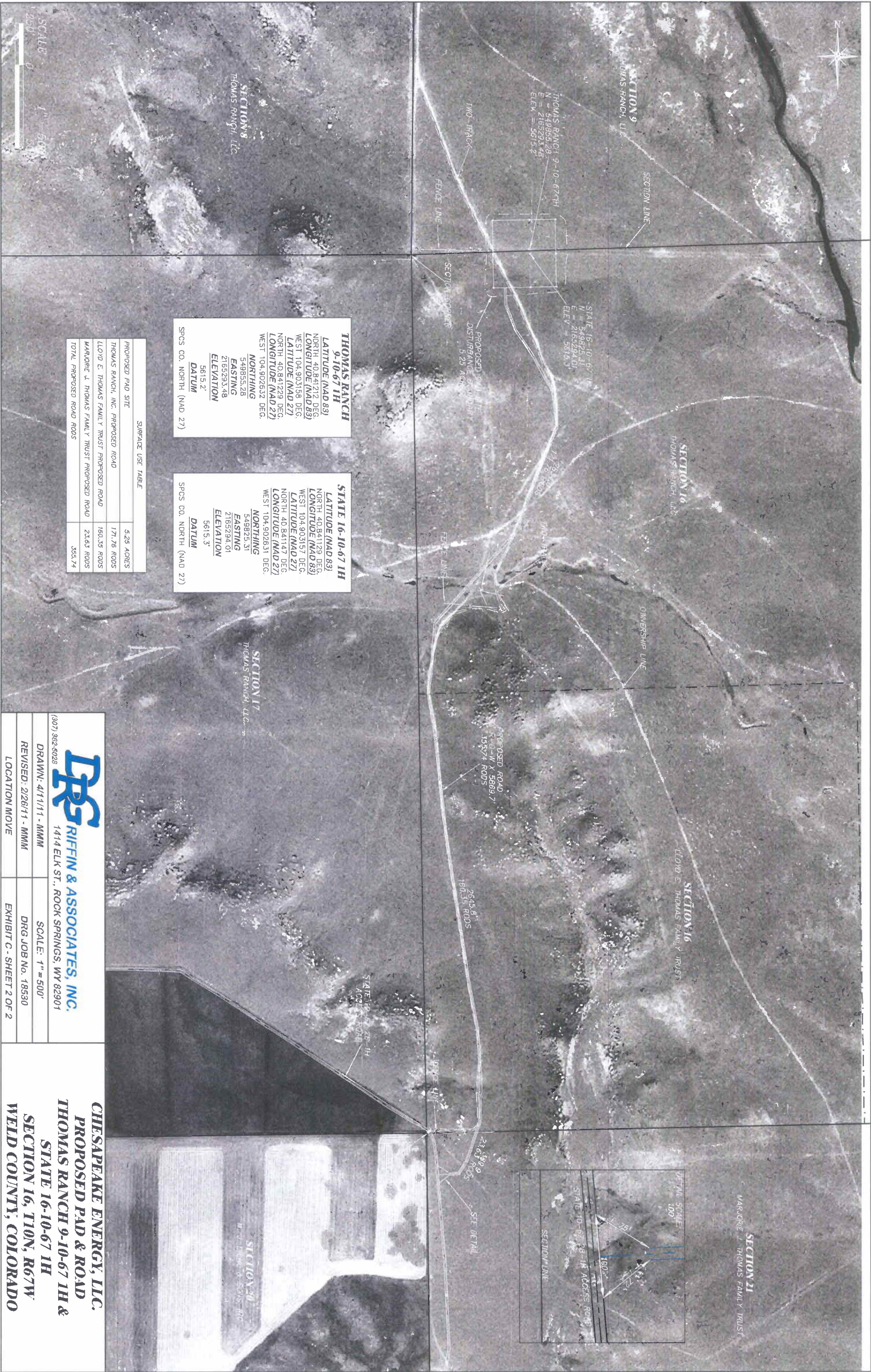
REVISID: 2/26/11 - MMM


LOCATION MOVE

SCALE: 1" = 500'

DRG JOB NO. 18530

EXHIBIT C - SHEET 1 OF 2





RIFFIN & ASSOCIATES, INC.

1414 ELK ST., ROCK SPRINGS, WY 82901

(307) 362-6028

DRAWN: 4/11/11 - MMM

REVISED: 2/26/11 - MMM

LOCATION MOVE

CHESAPEAKE ENERGY, LLC.

PROPOSED PAD & ROAD

THOMAS RANCH 9-10-67 1H & STATE 16-10-67 1H

SECTION 16, T10N, R67W

WELD COUNTY, COLORADO