

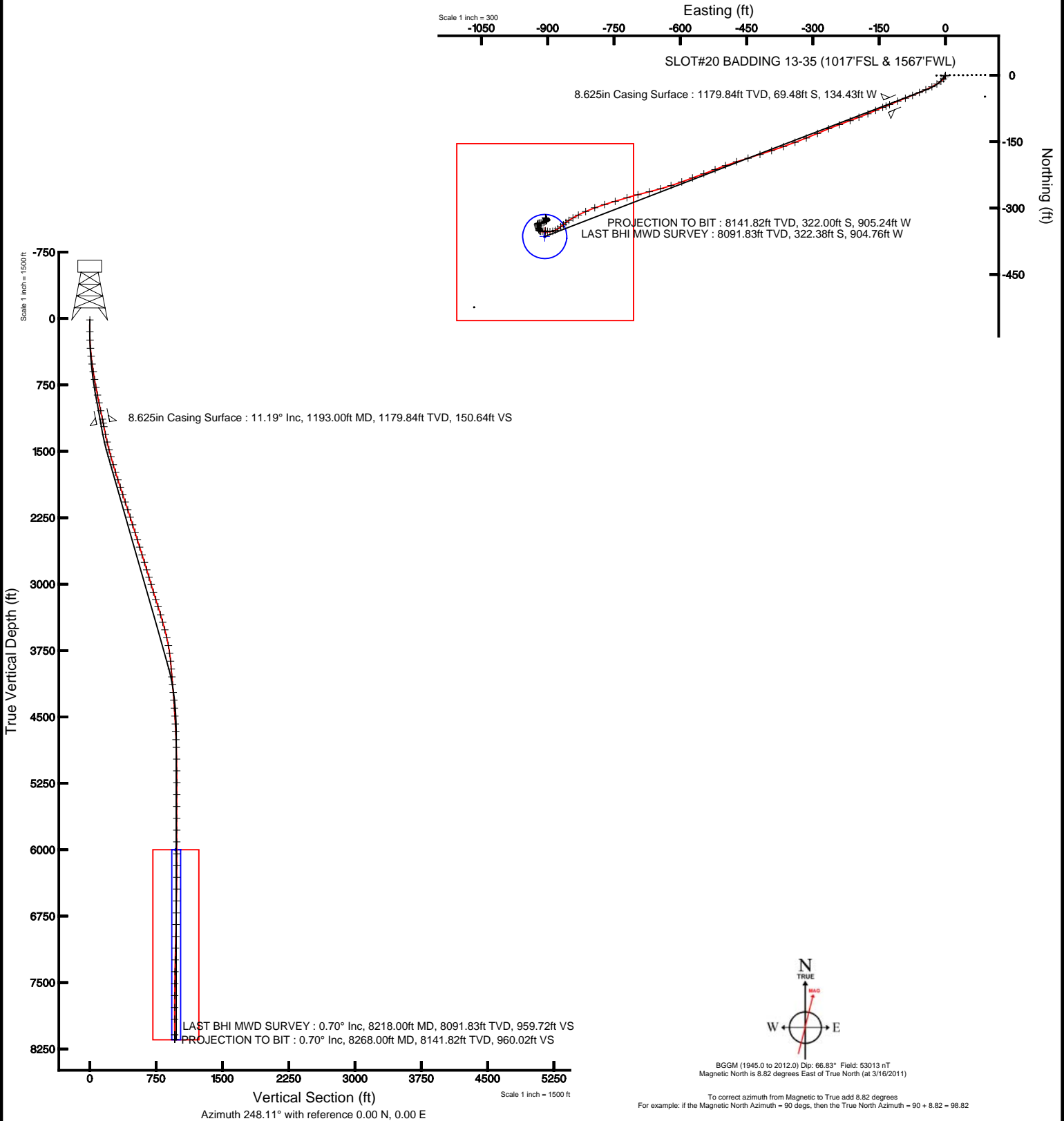


KERR MCGEE OIL & GAS ONSHORE LP

Location: COLORADO Slot: SLOT#20 BADDING 13-35 (1017'FSL & 1567'FWL)
 Field: WELD COUNTY (KERR MCGEE) Well: BADDING 13-35
 Facility: SEC.35-T2N-R66W Wellbore: BADDING 13-35 PWB



Plot reference wellbore is BADDING 13-35 (REV 8.0) PWP	Grid System: NAD83 / Lambert Colorado SP, Northern Zone (S01), US feet
True vertical depths are referenced to XTREME 15 (RKB)	North Reference: True north
Measured depths are referenced to XTREME 15 (RKB)	Scale: True distance
XTREME 15 (RKB) to Mean Sea Level: 5123 feet	Depths are in feet
Mean Sea Level to Mud line (At Slot: SLOT#20 BADDING 13-35 (1017'FSL & 1567'FWL)): 0 feet	Created by: cookdam on 6/22/2011
Coordinates are in feet referenced to Slot	





Actual Wellpath Report

BADDING 13-35 AWP

Page 1 of 5



REFERENCE WELLPATH IDENTIFICATION

Operator	KERR MCGEE OIL & GAS ONSHORE LP	Slot	SLOT#20 BADDING 13-35 (1017'FSL & 1567'FWL)
Area	COLORADO	Well	BADDING 13-35
Field	WELD COUNTY (KERR MCGEE)	Wellbore	BADDING 13-35 AWB
Facility	SEC.35-T2N-R66W		

REPORT SETUP INFORMATION

Projection System	NAD83 / Lambert Colorado SP, Northern Zone (501), US feet	Software System	WellArchitect® 3.0.0
North Reference	True	User	Cookdanm
Scale	0.999961	Report Generated	6/22/2011 at 7:59:32 PM
Convergence at slot	0.49° East	Database/Source file	WA_DENVER/BADDING_13-35_AWB.xml

WELLPATH LOCATION

	Local coordinates		Grid coordinates		Geographic coordinates	
	North[ft]	East[ft]	Easting[US ft]	Northing[US ft]	Latitude	Longitude
Slot Location	75.13	-2078.60	3210357.98	1276561.70	40°05'24.378"N	104°44'53.272"W
Facility Reference Pt			3212437.05	1276504.37	40°05'23.636"N	104°44'26.527"W
Field Reference Pt			3197771.84	1268891.29	40°04'09.600"N	104°47'36.000"W

WELLPATH DATUM

Calculation method	Minimum curvature	XTREME 15 (RKB) to Facility Vertical Datum	5123.00ft
Horizontal Reference Pt	Slot	XTREME 15 (RKB) to Mean Sea Level	5123.00ft
Vertical Reference Pt	XTREME 15 (RKB)	XTREME 15 (RKB) to Mud Line at Slot (SLOT#20 BADDING 13-35 (1017'FSL & 1567'FWL))	5123.00ft
MD Reference Pt	XTREME 15 (RKB)	Section Origin	N 0.00, E 0.00 ft
Field Vertical Reference	Mean Sea Level	Section Azimuth	248.11°



Actual Wellpath Report

BADDING 13-35 AWP

Page 2 of 5



REFERENCE WELLPATH IDENTIFICATION

Operator	KERR MCGEE OIL & GAS ONSHORE LP	Slot	SLOT#20 BADDING 13-35 (1017'FSL & 1567'FWL)
Area	COLORADO	Well	BADDING 13-35
Field	WELD COUNTY (KERR MCGEE)	Wellbore	BADDING 13-35 AWB
Facility	SEC.35-T2N-R66W		

WELLPATH DATA (82 stations) † = interpolated/extrapolated station

MD [ft]	Inclination [°]	Azimuth [°]	TVD [ft]	Vert Sect [ft]	North [ft]	East [ft]	DLS [°/100ft]	Comments
0.00†	0.000	151.600	0.00	0.00	0.00	0.00	0.00	
15.00	0.000	151.600	15.00	0.00	0.00	0.00	0.00	
150.00	0.500	151.600	150.00	-0.07	-0.52	0.28	0.37	
242.00	3.000	207.100	241.95	1.70	-3.01	-0.63	2.99	
336.00	4.400	219.800	335.75	6.74	-7.98	-4.05	1.72	
425.00	6.200	233.100	424.37	14.38	-13.48	-10.08	2.44	
514.00	7.900	239.800	512.70	25.08	-19.45	-19.21	2.12	
601.00	9.300	242.600	598.72	37.99	-25.69	-30.62	1.68	
691.00	10.100	245.800	687.43	53.12	-32.27	-44.28	1.07	
780.00	10.400	246.800	775.01	68.94	-38.64	-58.78	0.39	
870.00	11.200	246.800	863.42	85.80	-45.28	-74.28	0.89	
960.00	11.400	250.000	951.67	103.43	-51.76	-90.67	0.73	
1051.00	12.100	247.500	1040.77	121.96	-58.49	-107.94	0.95	
1148.00	11.500	247.200	1135.72	141.79	-66.13	-126.24	0.62	
1235.00	10.900	249.300	1221.06	158.69	-72.40	-141.93	0.83	
1324.00	11.500	244.700	1308.37	175.96	-79.16	-157.82	1.21	
1412.00	13.700	247.900	1394.24	195.14	-86.83	-175.41	2.62	
1501.00	14.500	249.600	1480.56	216.82	-94.68	-195.62	1.01	
1584.00	15.600	248.900	1560.71	238.36	-102.32	-215.77	1.34	
1677.00	16.700	250.300	1650.04	264.22	-111.33	-240.02	1.25	
1767.00	17.200	247.900	1736.13	290.45	-120.69	-264.52	0.96	
1857.00	17.800	246.100	1821.97	317.50	-131.27	-289.43	0.90	
1945.00	18.400	249.300	1905.61	344.83	-141.63	-314.72	1.32	
2032.00	18.100	249.300	1988.24	372.07	-151.26	-340.21	0.34	
2121.00	18.500	250.700	2072.74	400.00	-160.82	-366.47	0.67	
2212.00	17.900	251.400	2159.18	428.39	-170.05	-393.35	0.70	
2301.00	18.400	251.700	2243.76	456.06	-178.82	-419.65	0.57	
2391.00	18.100	253.500	2329.23	484.15	-187.25	-446.54	0.71	
2480.00	17.500	252.500	2413.97	511.26	-195.20	-472.56	0.76	
2569.00	17.100	249.300	2498.94	537.69	-203.85	-497.56	1.16	
2656.00	16.800	248.900	2582.16	563.05	-212.90	-521.25	0.37	
2747.00	17.900	250.300	2669.02	590.17	-222.35	-546.69	1.29	
2837.00	17.600	248.900	2754.74	617.60	-231.91	-572.41	0.58	
2924.00	17.200	250.700	2837.76	643.60	-240.90	-596.82	0.77	
3011.00	16.900	251.700	2920.93	669.07	-249.12	-620.96	0.48	
3098.00	16.300	254.900	3004.31	693.82	-256.27	-644.76	1.26	
3189.00	17.100	254.600	3091.47	719.79	-263.15	-669.99	0.88	
3277.00	18.100	256.700	3175.35	746.16	-269.73	-695.76	1.35	
3361.00	17.700	252.500	3255.29	771.80	-276.57	-720.64	1.61	
3456.00	16.600	253.200	3346.06	799.72	-284.84	-747.41	1.18	
3545.00	15.900	253.500	3431.51	824.52	-291.97	-771.27	0.79	
3633.00	15.300	250.300	3516.27	848.12	-299.31	-793.76	1.19	
3723.00	13.300	244.000	3603.48	870.31	-307.85	-814.24	2.81	
3814.00	9.800	244.400	3692.62	888.49	-315.79	-830.64	3.85	
3904.00	8.000	238.700	3781.54	902.31	-322.36	-842.90	2.22	



Actual Wellpath Report

BADDING 13-35 AWP



REFERENCE WELLPATH IDENTIFICATION

Operator	KERR MCGEE OIL & GAS ONSHORE LP	Slot	SLOT#20 BADDING 13-35 (1017'FSL & 1567'FWL)
Area	COLORADO	Well	BADDING 13-35
Field	WELD COUNTY (KERR MCGEE)	Wellbore	BADDING 13-35 AWB
Facility	SEC.35-T2N-R66W		

WELLPATH DATA (82 stations)

MD [ft]	Inclination [°]	Azimuth [°]	TVD [ft]	Vert Sect [ft]	North [ft]	East [ft]	DLS [°/100ft]	Comments
3994.00	5.800	240.900	3870.88	913.00	-327.82	-852.23	2.46	
4083.00	4.800	228.200	3959.50	920.97	-332.49	-858.93	1.73	
4172.00	5.100	228.500	4048.17	928.19	-337.59	-864.67	0.34	
4261.00	4.900	236.300	4136.83	935.64	-342.32	-870.80	0.80	
4348.00	5.300	234.900	4223.49	943.19	-346.70	-877.17	0.48	
4436.00	3.900	241.900	4311.20	950.12	-350.44	-883.14	1.71	
4526.00	3.900	256.000	4401.00	956.20	-352.62	-888.81	1.06	
4616.00	3.900	270.000	4490.79	962.07	-353.37	-894.84	1.06	
4705.00	3.700	284.800	4579.60	967.18	-352.63	-900.64	1.12	
4794.00	2.300	271.800	4668.47	971.12	-351.84	-905.21	1.74	
4883.00	2.400	260.200	4757.40	974.58	-352.10	-908.83	0.55	
4970.00	2.400	266.500	4844.32	978.09	-352.52	-912.44	0.30	
5102.00	1.000	280.900	4976.26	981.68	-352.48	-916.33	1.10	
5235.00	1.200	301.700	5109.24	983.48	-351.52	-918.65	0.33	
5369.00	0.500	20.800	5243.23	983.92	-350.24	-919.64	0.90	
5504.00	1.000	350.200	5378.21	983.27	-348.53	-919.63	0.46	
5638.00	0.300	43.300	5512.20	982.71	-347.12	-919.59	0.64	
5771.00	0.400	292.900	5645.20	982.72	-346.69	-919.78	0.43	
5905.00	0.900	348.100	5779.20	982.87	-345.48	-920.43	0.56	
6038.00	1.100	324.400	5912.18	982.99	-343.42	-921.39	0.34	
6173.00	0.800	0.400	6047.16	982.94	-341.42	-922.13	0.48	
6307.00	1.400	338.200	6181.13	982.58	-338.96	-922.73	0.54	
6439.00	0.500	18.000	6313.12	982.21	-336.92	-923.16	0.81	
6571.00	0.600	16.900	6445.11	981.41	-335.71	-922.78	0.08	
6705.00	0.900	64.000	6579.10	979.92	-334.58	-921.63	0.49	
6840.00	1.100	86.200	6714.08	977.63	-334.03	-919.38	0.32	
6972.00	1.100	77.400	6846.05	975.18	-333.67	-916.88	0.13	
7107.00	1.400	95.300	6981.02	972.43	-333.54	-913.97	0.36	
7239.00	1.800	68.600	7112.97	968.92	-332.93	-910.44	0.63	
7371.00	1.400	61.900	7244.92	965.25	-331.41	-907.08	0.33	
7505.00	1.100	56.600	7378.89	962.36	-329.93	-904.57	0.24	
7640.00	0.800	41.200	7513.87	960.25	-328.51	-902.86	0.29	
7775.00	0.700	358.600	7648.86	959.12	-326.98	-902.26	0.41	
7909.00	0.700	333.700	7782.85	958.90	-325.42	-902.65	0.23	
8041.00	0.700	331.500	7914.84	959.05	-323.99	-903.39	0.02	
8218.00	0.700	308.000	8091.83	959.72	-322.38	-904.76	0.16	LAST BHI MWD SURVEY
8268.00	0.700	308.000	8141.82	960.02	-322.00	-905.24	0.00	PROJECTION TO BIT



Actual Wellpath Report

BADDING 13-35 AWP

Page 4 of 5



REFERENCE WELLPATH IDENTIFICATION

Operator	KERR MCGEE OIL & GAS ONSHORE LP	Slot	SLOT#20 BADDING 13-35 (1017'FSL & 1567'FWL)
Area	COLORADO	Well	BADDING 13-35
Field	WELD COUNTY (KERR MCGEE)	Wellbore	BADDING 13-35 AWB
Facility	SEC.35-T2N-R66W		

HOLE & CASING SECTIONS - Ref Wellbore: BADDING 13-35 AWB Ref Wellpath: BADDING 13-35 AWP

String/Diameter	Start MD [ft]	End MD [ft]	Interval [ft]	Start TVD [ft]	End TVD [ft]	Start N/S [ft]	Start E/W [ft]	End N/S [ft]	End E/W [ft]
12.25in Open Hole	15.00	1203.00	1188.00	15.00	1189.65	0.00	0.00	-70.20	-136.23
8.625in Casing Surface	15.00	1193.00	1178.00	15.00	1179.84	0.00	0.00	-69.48	-134.43
7.875in Open Hole	1193.00	8268.00	7075.00	1179.84	8141.82	-69.48	-134.43	-322.00	-905.24

TARGETS

Name	MD [ft]	TVD [ft]	North [ft]	East [ft]	Grid East [US ft]	Grid North [US ft]	Latitude	Longitude	Shape
BADDING 13-35 GEO TARGET 50' RADIUS (660'FSL & 660'FWL, REV-1)		6000.00	-364.28	-906.83	3209454.30	1276189.76	40°05'20.778"N	104°45'04.939"W	circle
BADDING 13-35 LEGAL BOX (190'S,210'N,199'W,201'E OF GEO TARGET)		6000.00	-354.28	-905.83	3209455.22	1276199.76	40°05'20.877"N	104°45'04.926"W	square

WELLPATH COMPOSITION - Ref Wellbore: BADDING 13-35 AWB Ref Wellpath: BADDING 13-35 AWP

Start MD [ft]	End MD [ft]	Positional Uncertainty Model	Log Name/Comment	Wellbore
15.00	1148.00	NaviTrak (Standard)	BHI MWD 12.25 HOLE <150-1148>	BADDING 13-35 AWB
1148.00	8218.00	NaviTrak (Standard)	BHI MWD 7.875 HOLE <1235-8218>	BADDING 13-35 AWB
8218.00	8268.00	Blind Drilling (std)	Projection to bit	BADDING 13-35 AWB



Actual Wellpath Report

BADDING 13-35 AWP

Page 5 of 5



REFERENCE WELLPATH IDENTIFICATION

Operator	KERR MCGEE OIL & GAS ONSHORE LP	Slot	SLOT#20 BADDING 13-35 (1017'FSL & 1567'FWL)
Area	COLORADO	Well	BADDING 13-35
Field	WELD COUNTY (KERR MCGEE)	Wellbore	BADDING 13-35 AWB
Facility	SEC.35-T2N-R66W		

WELLPATH COMMENTS

MD [ft]	Inclination [°]	Azimuth [°]	TVD [ft]	Comment
8218.00	0.700	308.000	8091.83	LAST BHI MWD SURVEY
8268.00	0.700	308.000	8141.82	PROJECTION TO BIT