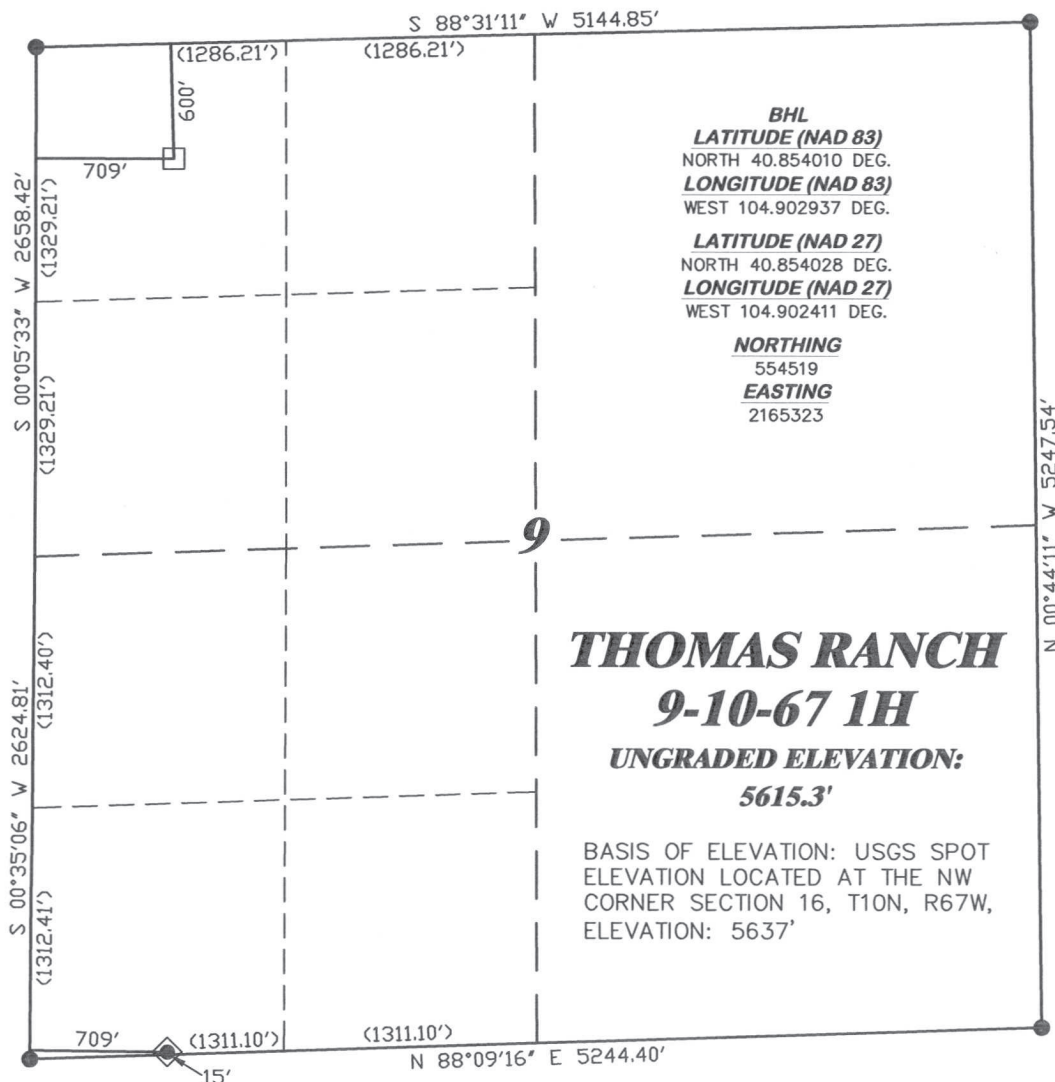


R. 67 W.



SCALE 1" = 1000'

T. 10 N.

BHL
LATITUDE (NAD 83)
NORTH 40.854010 DEG.
LONGITUDE (NAD 83)
WEST 104.902937 DEG.

LATITUDE (NAD 27)
NORTH 40.854028 DEG.
LONGITUDE (NAD 27)
WEST 104.902411 DEG.

NORTHING
554519
EASTING
2165323

LATITUDE (NAD 83)
NORTH 40.841212 DEG.
LONGITUDE (NAD 83)
WEST 104.903158 DEG.

LATITUDE (NAD 27)
NORTH 40.841229 DEG.
LONGITUDE (NAD 27)
WEST 104.902632 DEG.

NORTHING
549855.28
EASTING
2165293.48

THOMAS RANCH
9-10-67 1H
UNGRADED ELEVATION:
5615.3'

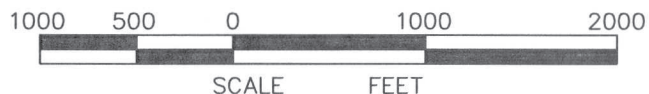
BASIS OF ELEVATION: USGS SPOT
ELEVATION LOCATED AT THE NW
CORNER SECTION 16, T10N, R67W,
ELEVATION: 5637'

BASIS OF BEARING/DATUM
SPCS CO NORTH NAD 27
BASED ON DRG CONTROL POINT
STATION "CP 28 10 67"

NOTES

PRAIRIE LANDS
EXISTING FENCE, GATE &
TWO-TRACK WITHIN
400' RADIUS OF WELL SITE.

GPS OPERATOR PAUL ORME
OBSERVED A PDOP OF 1.9.
ALL GPS OBSERVATIONS ARE IN
COMPLIANCE WITH COGCC RULE No.215.

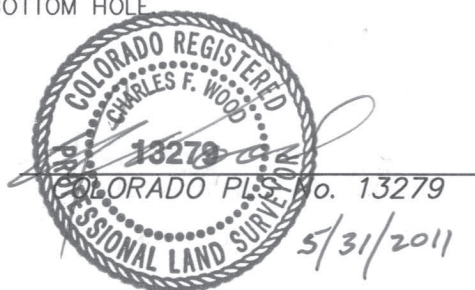


SURVEYOR'S STATEMENT

I, CHARLES F. WOOD, OF ROCK SPRINGS, WYOMING, HEREBY STATE: THIS MAP WAS MADE FROM NOTES TAKEN DURING AN ACTUAL FIELD SURVEY DONE UNDER MY DIRECT SUPERVISION ON MAY 25, 2011 AND THAT THIS PLAT CORRECTLY SHOWS THE LOCATION OF THOMAS RANCH 9-10-67 1H BOTTOM HOLE

LEGEND

- ◆ WELL LOCATION
- BOTTOM HOLE LOC. (APPROX)
- FOUND MONUMENT
- ▲ PREVIOUSLY FOUND MONUMENT



RIFFIN & ASSOCIATES, INC.
1414 ELK ST., ROCK SPRINGS, WY 82901

(307) 362-5028

DRAWN: 4/12/11 - MMM

SCALE: 1" = 1000'

REVISED: 5/27/11 - MMM

DRG JOB No. 18530

LOCATION MOVE

EXHIBIT 1

**PLAT OF DRILLING LOCATION
FOR
CHESAPEAKE ENERGY, LLC.**

**15' F/SL & 709' F/WL, SWSW, SECTION 9,
T. 10 N., R. 67 W., 6th P.M.
WELD COUNTY, COLORADO**