

Well: Thomas Ranch 9-10-67 1H
Zone of Interest: Niobrara Shale
Gound Elevation: 5637'
RKB: 5657'

Drill 12-1/4" surface hole to section TD at 1,200'.

Set 9-5/8" 40# J-55 casing and cement with Lead and Tail cement (see details below). Cement will be circulated to surface.

Install 11" x 5,000 psi BOP and test as required

Drill 8-3/4" pilot hole to TD at 8,250'.

Log pilot hole

Plug back pilot hole to KOP

Kick off and drill 8-3/4" curve at 10 deg/100' to end of build.

Drill 7-7/8" hole to well TD

Acquire shuttle logs: Triple-combo and Image logs in open hole

Set 4-1/2" production casing at TD.

Suspend well and move drilling rig out in preparation for well completion

CASING AND CEMENTING PROGRAM

The proposed casing program will be as follows:

<u>Purpose</u>	<u>Interval</u>		<u>Hole Size</u>	<u>Casing Size</u>	<u>Weight</u>	<u>Grade</u>	<u>Thread</u>	<u>Condition</u>
	<u>From</u>	<u>To</u>	<u>(")</u>	<u>(")</u>	<u>Lbs/Ft</u>			
Surface	0	1200	12 1/4	9 5/8	40	J-55	LTC	New
Production	0	12358	8-3/4" X 7-7/8"	4 1/2	11.6	P-110	LTC	New

Casing design subject to revision based on geologic conditions encountered.

Casing Safety Factors:

Interval	Casing	Burst	Collapse	Axial
Surface	9 5/8	2.03	2.03	4.78
Production	4 1/2	1.32	2.26	1.63

Centralizer Program

Casing	9 5/8	4 1/2
# of Bow-type spring centralizer	10	22

Cement Program

<u>Surface Casing</u>	<u>Slurry Volume</u>			<u>Weight</u>	<u>Yield</u>	<u>Mix H2O</u>	<u>TOC</u>
	<u>% Excess</u>	<u>(BBLS)</u>	<u>(Sacks)</u>	<u>(PPG)</u>	<u>(cuft/sk)</u>	<u>(GPS)</u>	
Lead Slurry	100%	100	191	11.50	2.95	17.88	0
Tail Slurry	100%	39	190	15.80	1.15	4.96	900

	Lead	Tail
--	------	------

Surface Casing with TOC at surface	Rockies LT 0.2 % Versaset (Additive Material) 0.2 % D-AIR 3000 (Additive Material) 0.125 lbm/sk Poly-E-Flake (Additive Material) 0.25 lbm/sk Kwik Seal (Additive Material)	Premium Cement, 94 lbm/sk Premium Cement (Cement) 1 % Calcium Chloride, Pellet (Accelerator) 0.125 lbm/sk Poly-E-Flake (Lost Circulation Additive)
------------------------------------	--	--

Cement must be circulated to surface

Plug back Cement Plan			Slurry Volume			Weight	Yield	Mix H2O	TOC
	From	To	% Excess	(BBLs)	(Sacks)	(PPG)	(cuft/sk)	(GPS)	
Plug #1	7700'	8200'	20%	27	98	15.80	1.52	6.23	7700'
Plug #2	7200'	7700'	20%	27	98	15.80	1.52	6.23	7200'

Production Casing		Slurry Volume			Weight	Yield	Mix H2O	TOC
		% Excess	(BBLs)	(Sacks)	(PPG)	(cuft/sk)	(GPS)	
Lead Slurry		20%	408	1042	12.00	2.20	12.30	1150'
Tail Slurry		20%	260	999	14.60	1.46	6.10	7367'

	Lead	Tail
Intermediate Casing Cment	50/50 Poz Premium 2 % Bentonite (Light Weight Additive) 5 lbm/sk Silicalite Compacted (Light Weight Additive) 0.5 % Versaset (Thixotropic Additive) 0.5 % Econolite (Cement Material) 0.6 % HR-7 (Retarder) 0.5 % D-AIR 3000 (Defoamer) 0.125 lbm/sk Poly-E-Flake (Lost Circulation Additive)	Poz Type I-II 50/50 1 % Bentonite (Light Weight Additive) 3 lbm/sk Silicalite Compacted (Additive Material) 3 % Microbond HT (Additive Material) 0.2 % Halad(R)-322 (Low Fluid Loss Control) 0.4 % Halad(R)-344 (Low Fluid Loss Control) 0.3 % HR-5 (Retarder)

The cement must achieve a compressive strength of at least 500 psi at the shoe prior to casing test and drilling out the shoe track. WOC time shall be recorded in the driller's log.

Production casing will be cemented to cover at least 200' above Niobrara

MUD PROGRAM

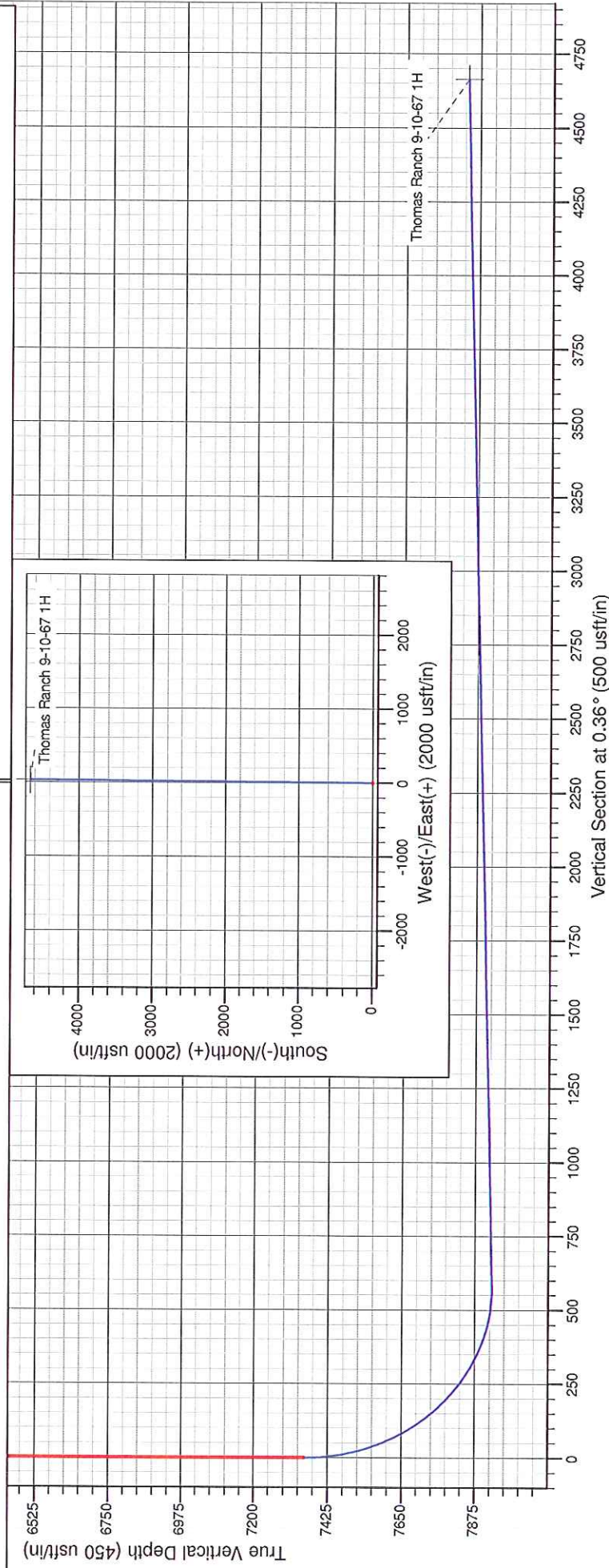
Purpose	Interval		Hole Size	Mud Type	Mud Weight	Viscosity	Fluid Loss	pH
	From	To	(")	(")	Lbs/Ft			
Surface	0'	1200'	12 1/4	WBM	8.4 – 8.6	28 – 32	N/C	9
Production	1,200	7,367	8 3/4	WBM	8.5 – 9.5	35 – 46	4 – 6	9
Production	7367'	12358'	8-3/4" X 7-7/8"	WBM	9.0 - 10.0	36 – 46	4 – 6	9

WBM = Water Based Mud

Project: Weld - DJ Basin
Site: Thomas Ranch 9-10-67 1H
Well: Thomas Ranch 9-10-67 1H
Wellbore: Thomas Ranch 9-10-67 1H
Design: Thomas Ranch 9-10-67 1H

PROJECT DETAILS: Weld - DJ Basin

Geodetic System: US State Plane 1927 (Exact solution)
Datum: NAD 1927 (NADCON CONUS)
Ellipsoid: Clarke 1866
Zone: Colorado North 501
System Datum: Mean Sea Level



SECTION DETAILS

Sec	MD	Inc	Azi	TVD	+N/-S	+E/-W	Dleg	TFace	VSect	Target
1	0.0	0.00	0.00	0.0	0.0	0.0	0.00	0.00	0.0	
2	7354.2	0.00	0.00	7354.2	0.0	0.0	0.00	0.00	0.0	
3	8266.7	91.25	0.36	7927.0	585.4	3.7	10.00	0.36	585.5	Thomas Ranch 9-10-67 1H
4	12346.0	91.25	0.36	7838.0	4663.7	29.5	0.00	0.00	4663.8	

Chesapeake Energy -Rockies District

Weld - DJ Basin

Thomas Ranch 9-10-67 1H

Thomas Ranch 9-10-67 1H

Thomas Ranch 9-10-67 1H

Plan: Thomas Ranch 9-10-67 1H

Standard Planning Report

18 July, 2011

Chesapeake Operating

Planning Report

Database:	Drilling Database	Local Co-ordinate Reference:	Well Thomas Ranch 9-10-67 1H
Company:	Chesapeake Energy -Rockies District	TVD Reference:	WELL @ 0.0usft (Original Well Elev)
Project:	Weld - DJ Basin	MD Reference:	WELL @ 0.0usft (Original Well Elev)
Site:	Thomas Ranch 9-10-67 1H	North Reference:	Grid
Well:	Thomas Ranch 9-10-67 1H	Survey Calculation Method:	Minimum Curvature
Wellbore:	Thomas Ranch 9-10-67 1H		
Design:	Thomas Ranch 9-10-67 1H		

Project	Weld - DJ Basin		
Map System:	US State Plane 1927 (Exact solution)	System Datum:	Mean Sea Level
Geo Datum:	NAD 1927 (NADCON CONUS)		
Map Zone:	Colorado North 501		

Site	Thomas Ranch 9-10-67 1H			
Site Position:		Northing:	549,855.28 ft	Latitude: 40° 50' 28.41450395 N
From:	Map	Easting:	2,165,293.48 ft	Longitude: 104° 54' 9.53137680 W
Position Uncertainty:	0.0 usft	Slot Radius:	0.000 in	Grid Convergence: 0.39 °

Well	Thomas Ranch 9-10-67 1H			
Well Position	+N/-S	0.0 usft	Northing: 549,855.28 ft	Latitude: 40° 50' 28.41450395 N
	+E/-W	0.0 usft	Easting: 2,165,293.48 ft	Longitude: 104° 54' 9.53137680 W
Position Uncertainty	0.0 usft	Wellhead Elevation:		Ground Level: 0.0 usft

Wellbore	Thomas Ranch 9-10-67 1H				
Magnetics	Model Name	Sample Date	Declination (°)	Dip Angle (°)	Field Strength (nT)
	IGRF200510	1/9/2011	9.00	67.41	53,453

Design	Thomas Ranch 9-10-67 1H			
Audit Notes:				
Version:	Phase:	PROTOTYPE	Tie On Depth:	0.0
Vertical Section:	Depth From (TVD) (usft)	+N/-S (usft)	+E/-W (usft)	Direction (°)
	0.0	0.0	0.0	0.36

Plan Sections										
Measured Depth (usft)	Inclination (°)	Azimuth (°)	Vertical Depth (usft)	+N/-S (usft)	+E/-W (usft)	Dogleg Rate (°/100usft)	Build Rate (°/100usft)	Turn Rate (°/100usft)	TFO (°)	Target
0.0	0.00	0.00	0.0	0.0	0.0	0.00	0.00	0.00	0.00	
7,354.2	0.00	0.00	7,354.2	0.0	0.0	0.00	0.00	0.00	0.00	
8,266.7	91.25	0.36	7,927.0	585.4	3.7	10.00	10.00	0.00	0.36	
12,346.0	91.25	0.36	7,838.0	4,663.7	29.5	0.00	0.00	0.00	0.00	Thomas Ranch 9-10-f

Chesapeake Operating

Planning Report

Database:	Drilling Database	Local Co-ordinate Reference:	Well Thomas Ranch 9-10-67 1H
Company:	Chesapeake Energy -Rockies District	TVD Reference:	WELL @ 0.0usft (Original Well Elev)
Project:	Weld - DJ Basin	MD Reference:	WELL @ 0.0usft (Original Well Elev)
Site:	Thomas Ranch 9-10-67 1H	North Reference:	Grid
Well:	Thomas Ranch 9-10-67 1H	Survey Calculation Method:	Minimum Curvature
Wellbore:	Thomas Ranch 9-10-67 1H		
Design:	Thomas Ranch 9-10-67 1H		

Planned Survey

Measured Depth (usft)	Inclination (°)	Azimuth (°)	Vertical Depth (usft)	+N/-S (usft)	+E/-W (usft)	Vertical Section (usft)	Dogleg Rate (°/100usft)	Build Rate (°/100usft)	Turn Rate (°/100usft)
0.0	0.00	0.00	0.0	0.0	0.0	0.0	0.00	0.00	0.00
100.0	0.00	0.00	100.0	0.0	0.0	0.0	0.00	0.00	0.00
200.0	0.00	0.00	200.0	0.0	0.0	0.0	0.00	0.00	0.00
300.0	0.00	0.00	300.0	0.0	0.0	0.0	0.00	0.00	0.00
400.0	0.00	0.00	400.0	0.0	0.0	0.0	0.00	0.00	0.00
500.0	0.00	0.00	500.0	0.0	0.0	0.0	0.00	0.00	0.00
600.0	0.00	0.00	600.0	0.0	0.0	0.0	0.00	0.00	0.00
700.0	0.00	0.00	700.0	0.0	0.0	0.0	0.00	0.00	0.00
800.0	0.00	0.00	800.0	0.0	0.0	0.0	0.00	0.00	0.00
900.0	0.00	0.00	900.0	0.0	0.0	0.0	0.00	0.00	0.00
1,000.0	0.00	0.00	1,000.0	0.0	0.0	0.0	0.00	0.00	0.00
1,100.0	0.00	0.00	1,100.0	0.0	0.0	0.0	0.00	0.00	0.00
1,200.0	0.00	0.00	1,200.0	0.0	0.0	0.0	0.00	0.00	0.00
1,300.0	0.00	0.00	1,300.0	0.0	0.0	0.0	0.00	0.00	0.00
1,400.0	0.00	0.00	1,400.0	0.0	0.0	0.0	0.00	0.00	0.00
1,500.0	0.00	0.00	1,500.0	0.0	0.0	0.0	0.00	0.00	0.00
1,600.0	0.00	0.00	1,600.0	0.0	0.0	0.0	0.00	0.00	0.00
1,700.0	0.00	0.00	1,700.0	0.0	0.0	0.0	0.00	0.00	0.00
1,800.0	0.00	0.00	1,800.0	0.0	0.0	0.0	0.00	0.00	0.00
1,900.0	0.00	0.00	1,900.0	0.0	0.0	0.0	0.00	0.00	0.00
2,000.0	0.00	0.00	2,000.0	0.0	0.0	0.0	0.00	0.00	0.00
2,100.0	0.00	0.00	2,100.0	0.0	0.0	0.0	0.00	0.00	0.00
2,200.0	0.00	0.00	2,200.0	0.0	0.0	0.0	0.00	0.00	0.00
2,300.0	0.00	0.00	2,300.0	0.0	0.0	0.0	0.00	0.00	0.00
2,400.0	0.00	0.00	2,400.0	0.0	0.0	0.0	0.00	0.00	0.00
2,500.0	0.00	0.00	2,500.0	0.0	0.0	0.0	0.00	0.00	0.00
2,600.0	0.00	0.00	2,600.0	0.0	0.0	0.0	0.00	0.00	0.00
2,700.0	0.00	0.00	2,700.0	0.0	0.0	0.0	0.00	0.00	0.00
2,800.0	0.00	0.00	2,800.0	0.0	0.0	0.0	0.00	0.00	0.00
2,900.0	0.00	0.00	2,900.0	0.0	0.0	0.0	0.00	0.00	0.00
3,000.0	0.00	0.00	3,000.0	0.0	0.0	0.0	0.00	0.00	0.00
3,100.0	0.00	0.00	3,100.0	0.0	0.0	0.0	0.00	0.00	0.00
3,200.0	0.00	0.00	3,200.0	0.0	0.0	0.0	0.00	0.00	0.00
3,300.0	0.00	0.00	3,300.0	0.0	0.0	0.0	0.00	0.00	0.00
3,400.0	0.00	0.00	3,400.0	0.0	0.0	0.0	0.00	0.00	0.00
3,500.0	0.00	0.00	3,500.0	0.0	0.0	0.0	0.00	0.00	0.00
3,600.0	0.00	0.00	3,600.0	0.0	0.0	0.0	0.00	0.00	0.00
3,700.0	0.00	0.00	3,700.0	0.0	0.0	0.0	0.00	0.00	0.00
3,800.0	0.00	0.00	3,800.0	0.0	0.0	0.0	0.00	0.00	0.00
3,900.0	0.00	0.00	3,900.0	0.0	0.0	0.0	0.00	0.00	0.00
4,000.0	0.00	0.00	4,000.0	0.0	0.0	0.0	0.00	0.00	0.00
4,100.0	0.00	0.00	4,100.0	0.0	0.0	0.0	0.00	0.00	0.00
4,200.0	0.00	0.00	4,200.0	0.0	0.0	0.0	0.00	0.00	0.00
4,300.0	0.00	0.00	4,300.0	0.0	0.0	0.0	0.00	0.00	0.00
4,400.0	0.00	0.00	4,400.0	0.0	0.0	0.0	0.00	0.00	0.00
4,500.0	0.00	0.00	4,500.0	0.0	0.0	0.0	0.00	0.00	0.00
4,600.0	0.00	0.00	4,600.0	0.0	0.0	0.0	0.00	0.00	0.00
4,700.0	0.00	0.00	4,700.0	0.0	0.0	0.0	0.00	0.00	0.00
4,800.0	0.00	0.00	4,800.0	0.0	0.0	0.0	0.00	0.00	0.00
4,900.0	0.00	0.00	4,900.0	0.0	0.0	0.0	0.00	0.00	0.00
5,000.0	0.00	0.00	5,000.0	0.0	0.0	0.0	0.00	0.00	0.00
5,100.0	0.00	0.00	5,100.0	0.0	0.0	0.0	0.00	0.00	0.00
5,200.0	0.00	0.00	5,200.0	0.0	0.0	0.0	0.00	0.00	0.00
5,300.0	0.00	0.00	5,300.0	0.0	0.0	0.0	0.00	0.00	0.00

Chesapeake Operating

Planning Report

Database:	Drilling Database	Local Co-ordinate Reference:	Well Thomas Ranch 9-10-67 1H
Company:	Chesapeake Energy -Rockies District	TVD Reference:	WELL @ 0.0usft (Original Well Elev)
Project:	Weld - DJ Basin	MD Reference:	WELL @ 0.0usft (Original Well Elev)
Site:	Thomas Ranch 9-10-67 1H	North Reference:	Grid
Well:	Thomas Ranch 9-10-67 1H	Survey Calculation Method:	Minimum Curvature
Wellbore:	Thomas Ranch 9-10-67 1H		
Design:	Thomas Ranch 9-10-67 1H		

Planned Survey

Measured Depth (usft)	Inclination (°)	Azimuth (°)	Vertical Depth (usft)	+N/-S (usft)	+E/-W (usft)	Vertical Section (usft)	Dogleg Rate (°/100usft)	Build Rate (°/100usft)	Turn Rate (°/100usft)
5,400.0	0.00	0.00	5,400.0	0.0	0.0	0.0	0.00	0.00	0.00
5,500.0	0.00	0.00	5,500.0	0.0	0.0	0.0	0.00	0.00	0.00
5,600.0	0.00	0.00	5,600.0	0.0	0.0	0.0	0.00	0.00	0.00
5,700.0	0.00	0.00	5,700.0	0.0	0.0	0.0	0.00	0.00	0.00
5,800.0	0.00	0.00	5,800.0	0.0	0.0	0.0	0.00	0.00	0.00
5,900.0	0.00	0.00	5,900.0	0.0	0.0	0.0	0.00	0.00	0.00
6,000.0	0.00	0.00	6,000.0	0.0	0.0	0.0	0.00	0.00	0.00
6,100.0	0.00	0.00	6,100.0	0.0	0.0	0.0	0.00	0.00	0.00
6,200.0	0.00	0.00	6,200.0	0.0	0.0	0.0	0.00	0.00	0.00
6,300.0	0.00	0.00	6,300.0	0.0	0.0	0.0	0.00	0.00	0.00
6,400.0	0.00	0.00	6,400.0	0.0	0.0	0.0	0.00	0.00	0.00
6,500.0	0.00	0.00	6,500.0	0.0	0.0	0.0	0.00	0.00	0.00
6,600.0	0.00	0.00	6,600.0	0.0	0.0	0.0	0.00	0.00	0.00
6,700.0	0.00	0.00	6,700.0	0.0	0.0	0.0	0.00	0.00	0.00
6,800.0	0.00	0.00	6,800.0	0.0	0.0	0.0	0.00	0.00	0.00
6,900.0	0.00	0.00	6,900.0	0.0	0.0	0.0	0.00	0.00	0.00
7,000.0	0.00	0.00	7,000.0	0.0	0.0	0.0	0.00	0.00	0.00
7,100.0	0.00	0.00	7,100.0	0.0	0.0	0.0	0.00	0.00	0.00
7,200.0	0.00	0.00	7,200.0	0.0	0.0	0.0	0.00	0.00	0.00
7,300.0	0.00	0.00	7,300.0	0.0	0.0	0.0	0.00	0.00	0.00
7,354.2	0.00	0.00	7,354.2	0.0	0.0	0.0	0.00	0.00	0.00
7,400.0	4.58	0.36	7,400.0	1.8	0.0	1.8	10.00	10.00	0.00
7,450.0	9.58	0.36	7,449.6	8.0	0.1	8.0	10.00	10.00	0.00
7,500.0	14.58	0.36	7,498.4	18.5	0.1	18.5	10.00	10.00	0.00
7,550.0	19.58	0.36	7,546.2	33.1	0.2	33.1	10.00	10.00	0.00
7,600.0	24.58	0.36	7,592.5	51.9	0.3	51.9	10.00	10.00	0.00
7,650.0	29.58	0.36	7,637.0	74.7	0.5	74.7	10.00	10.00	0.00
7,700.0	34.58	0.36	7,679.4	101.2	0.6	101.2	10.00	10.00	0.00
7,750.0	39.58	0.36	7,719.3	131.4	0.8	131.4	10.00	10.00	0.00
7,800.0	44.58	0.36	7,756.4	164.9	1.0	164.9	10.00	10.00	0.00
7,850.0	49.58	0.36	7,790.4	201.5	1.3	201.5	10.00	10.00	0.00
7,900.0	54.58	0.36	7,821.1	240.9	1.5	240.9	10.00	10.00	0.00
7,950.0	59.58	0.36	7,848.3	282.9	1.8	282.9	10.00	10.00	0.00
8,000.0	64.58	0.36	7,871.7	327.0	2.1	327.0	10.00	10.00	0.00
8,050.0	69.58	0.36	7,891.1	373.1	2.4	373.1	10.00	10.00	0.00
8,100.0	74.58	0.36	7,906.5	420.6	2.7	420.6	10.00	10.00	0.00
8,150.0	79.58	0.36	7,917.7	469.4	3.0	469.4	10.00	10.00	0.00
8,200.0	84.58	0.36	7,924.6	518.9	3.3	518.9	10.00	10.00	0.00
8,250.0	89.58	0.36	7,927.1	568.8	3.6	568.8	10.00	10.00	0.00
8,266.7	91.25	0.36	7,927.0	585.4	3.7	585.5	10.00	10.00	0.00
8,300.0	91.25	0.36	7,926.3	618.8	3.9	618.8	0.00	0.00	0.00
8,400.0	91.25	0.36	7,924.1	718.7	4.5	718.8	0.00	0.00	0.00
8,500.0	91.25	0.36	7,921.9	818.7	5.2	818.7	0.00	0.00	0.00
8,600.0	91.25	0.36	7,919.7	918.7	5.8	918.7	0.00	0.00	0.00
8,700.0	91.25	0.36	7,917.5	1,018.7	6.4	1,018.7	0.00	0.00	0.00
8,800.0	91.25	0.36	7,915.4	1,118.6	7.1	1,118.7	0.00	0.00	0.00
8,900.0	91.25	0.36	7,913.2	1,218.6	7.7	1,218.6	0.00	0.00	0.00
9,000.0	91.25	0.36	7,911.0	1,318.6	8.3	1,318.6	0.00	0.00	0.00
9,100.0	91.25	0.36	7,908.8	1,418.6	9.0	1,418.6	0.00	0.00	0.00
9,200.0	91.25	0.36	7,906.6	1,518.5	9.6	1,518.6	0.00	0.00	0.00
9,300.0	91.25	0.36	7,904.4	1,618.5	10.2	1,618.5	0.00	0.00	0.00
9,400.0	91.25	0.36	7,902.3	1,718.5	10.9	1,718.5	0.00	0.00	0.00
9,500.0	91.25	0.36	7,900.1	1,818.5	11.5	1,818.5	0.00	0.00	0.00
9,600.0	91.25	0.36	7,897.9	1,918.4	12.1	1,918.5	0.00	0.00	0.00

Chesapeake Operating

Planning Report

Database:	Drilling Database	Local Co-ordinate Reference:	Well Thomas Ranch 9-10-67 1H
Company:	Chesapeake Energy -Rockies District	TVD Reference:	WELL @ 0.0usft (Original Well Elev)
Project:	Weld - DJ Basin	MD Reference:	WELL @ 0.0usft (Original Well Elev)
Site:	Thomas Ranch 9-10-67 1H	North Reference:	Grid
Well:	Thomas Ranch 9-10-67 1H	Survey Calculation Method:	Minimum Curvature
Wellbore:	Thomas Ranch 9-10-67 1H		
Design:	Thomas Ranch 9-10-67 1H		

Planned Survey

Measured Depth (usft)	Inclination (°)	Azimuth (°)	Vertical Depth (usft)	+N/-S (usft)	+E/-W (usft)	Vertical Section (usft)	Dogleg Rate (°/100usft)	Build Rate (°/100usft)	Turn Rate (°/100usft)
9,700.0	91.25	0.36	7,895.7	2,018.4	12.8	2,018.4	0.00	0.00	0.00
9,800.0	91.25	0.36	7,893.5	2,118.4	13.4	2,118.4	0.00	0.00	0.00
9,900.0	91.25	0.36	7,891.4	2,218.4	14.0	2,218.4	0.00	0.00	0.00
10,000.0	91.25	0.36	7,889.2	2,318.3	14.7	2,318.4	0.00	0.00	0.00
10,100.0	91.25	0.36	7,887.0	2,418.3	15.3	2,418.4	0.00	0.00	0.00
10,200.0	91.25	0.36	7,884.8	2,518.3	15.9	2,518.3	0.00	0.00	0.00
10,300.0	91.25	0.36	7,882.6	2,618.3	16.6	2,618.3	0.00	0.00	0.00
10,400.0	91.25	0.36	7,880.5	2,718.2	17.2	2,718.3	0.00	0.00	0.00
10,500.0	91.25	0.36	7,878.3	2,818.2	17.8	2,818.3	0.00	0.00	0.00
10,600.0	91.25	0.36	7,876.1	2,918.2	18.5	2,918.2	0.00	0.00	0.00
10,700.0	91.25	0.36	7,873.9	3,018.1	19.1	3,018.2	0.00	0.00	0.00
10,800.0	91.25	0.36	7,871.7	3,118.1	19.7	3,118.2	0.00	0.00	0.00
10,900.0	91.25	0.36	7,869.5	3,218.1	20.4	3,218.2	0.00	0.00	0.00
11,000.0	91.25	0.36	7,867.4	3,318.1	21.0	3,318.1	0.00	0.00	0.00
11,100.0	91.25	0.36	7,865.2	3,418.0	21.6	3,418.1	0.00	0.00	0.00
11,200.0	91.25	0.36	7,863.0	3,518.0	22.3	3,518.1	0.00	0.00	0.00
11,300.0	91.25	0.36	7,860.8	3,618.0	22.9	3,618.1	0.00	0.00	0.00
11,400.0	91.25	0.36	7,858.6	3,718.0	23.5	3,718.0	0.00	0.00	0.00
11,500.0	91.25	0.36	7,856.5	3,817.9	24.2	3,818.0	0.00	0.00	0.00
11,600.0	91.25	0.36	7,854.3	3,917.9	24.8	3,918.0	0.00	0.00	0.00
11,700.0	91.25	0.36	7,852.1	4,017.9	25.4	4,018.0	0.00	0.00	0.00
11,800.0	91.25	0.36	7,849.9	4,117.9	26.1	4,117.9	0.00	0.00	0.00
11,900.0	91.25	0.36	7,847.7	4,217.8	26.7	4,217.9	0.00	0.00	0.00
12,000.0	91.25	0.36	7,845.5	4,317.8	27.3	4,317.9	0.00	0.00	0.00
12,100.0	91.25	0.36	7,843.4	4,417.8	28.0	4,417.9	0.00	0.00	0.00
12,200.0	91.25	0.36	7,841.2	4,517.8	28.6	4,517.9	0.00	0.00	0.00
12,300.0	91.25	0.36	7,839.0	4,617.7	29.2	4,617.8	0.00	0.00	0.00
12,346.0	91.25	0.36	7,838.0	4,663.7	29.5	4,663.8	0.00	0.00	0.00

Design Targets

Target Name	Dip Angle (°)	Dip Dir. (°)	TVD (usft)	+N/-S (usft)	+E/-W (usft)	Northing (ft)	Easting (ft)	Latitude	Longitude
Thomas Ranch 9-10-67	0.00	0.00	7,838.0	4,663.7	29.5	554,519.00	2,165,323.00	0° 51' 14.49333005 N	104° 54' 8.73843610 W
- hit/miss target									
- Shape									
- plan hits target center									
- Point									