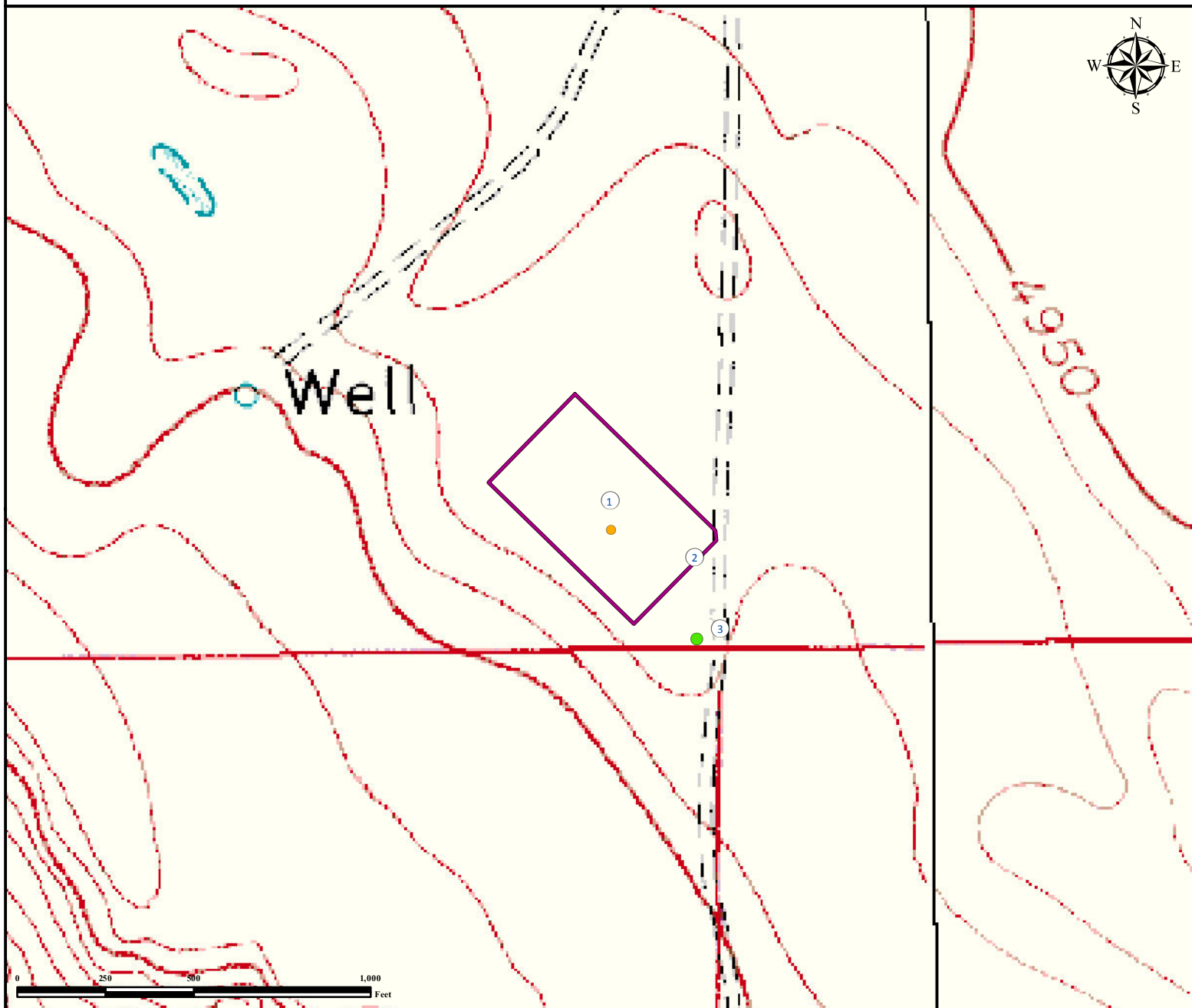


# Reference Map

## SLICK ROCK 19-44-7-60

SE¼ SE¼ SECTION 19, TOWNSHIP 7 NORTH, RANGE 60 WEST OF THE 6TH PRINCIPAL MERIDIAN



1. Proposed Well SLICK ROCK 19-44-7-60.

2. Operational Disturbance Area.

3. Reference photo location.

### Legend

- Proposed Well
- Reference Photo Location
- Disturbance Area

### Reference Location

\*\* SLICK ROCK 19-44-7-60  
Reference Photo Point (NAD83) \*\*

LAT: 40.553550° LONG: -104.127873°  
Elevation: 5006 Feet



Use our resources to find yours!  
[www.petro-fs.com](http://www.petro-fs.com)  
(303) 928-7128

Field Date: 06/0/2011  
Drafting Date: 06/28/2011  
Drafter: ABD  
Checked By: BHF

Data Sources:  
- Topo courtesy USGS

Prepared for:

