
NOBLE ENERGY INC E-BUSINESS

**BM 34-43C
PARACHUTE
Garfield County , Colorado**

Cement Surface Casing
03-Feb-2011

Post Job Reports

The Road to Excellence Starts with Safety

Sold To #: 345242		Ship To #: 2808286		Quote #:		Sales Order #: 7931714	
Customer: NOBLE ENERGY INC E-BUSINESS				Customer Rep: Collver, Charles			
Well Name: BM			Well #: 34-43C			API/UWI #: 05-045-19856	
Field: PARACHUTE		City (SAP): PARACHUTE		County/Parish: Garfield		State: Colorado	
Lat: N 39.392 deg. OR N 39 deg. 23 min. 32.863 secs.				Long: W 107.972 deg. OR W -108 deg. 1 min. 40.462 secs.			
Contractor: H&P Drilling			Rig/Platform Name/Num: H&P 322				
Job Purpose: Cement Surface Casing							
Well Type: Development Well			Job Type: Cement Surface Casing				
Sales Person: METLI, MARSHALL			Srvc Supervisor: FEUERBORN, JOHN			MBU ID Emp #: 381677	

Job Personnel

HES Emp Name	Exp Hrs	Emp #	HES Emp Name	Exp Hrs	Emp #	HES Emp Name	Exp Hrs	Emp #
BECK, MICHAEL George	18	489151	BORSZICH, STEPHEN A	18	412388	DEUSSEN, EDWARD Eric	13	485182
FEUERBORN, JOHN William	18	381677	SIMINEO, JEROD M	18	479954	TRIPLETT, MICHEAL Anthony	8	447908
WEAVER, CARLTON Russell	13	457698	YUTZY, BRIAN Matthew	18	478510			

Equipment

HES Unit #	Distance-1 way	HES Unit #	Distance-1 way	HES Unit #	Distance-1 way	HES Unit #	Distance-1 way
	60 mile	10025062	60 mile	10248057	60 mile	10722398	60 mile
10822535	60 mile	10897797	60 mile	11021972	60 mile	11027039	60 mile
11139328	60 mile	11259884	60 mile				

Job Hours

Date	On Location Hours	Operating Hours	Date	On Location Hours	Operating Hours	Date	On Location Hours	Operating Hours
2-2-11	4	0	2-3-11	18	6			

TOTAL Total is the sum of each column separately

Job

Formation Name	Top	Bottom	Called Out	Date	Time	Time Zone
Formation Depth (MD)			On Location	02 - Feb - 2011	12:45	MST
Form Type	BHST		Job Started	02 - Feb - 2011	20:00	MST
Job depth MD	3313. ft	Job Depth TVD	3313. ft	Job Started	03 - Feb - 2011	02:00
Water Depth		Wk Ht Above Floor	3. ft	Job Completed	03 - Feb - 2011	13:24
Perforation Depth (MD)	From	To	Departed Loc	03 - Feb - 2011	15:00	MST

Well Data

Description	New / Used	Max pressure psig	Size in	ID in	Weight lbm/ft	Thread	Grade	Top MD ft	Bottom MD ft	Top TVD ft	Bottom TVD ft
14 3/4" Open Hole				14.75				.	3303.		
9 5/8" Surface Casing	New		9.625	8.835	40.		J-55	.	3303.		

Sales/Rental/3rd Party (HES)

Description	Qty	Qty uom	Depth	Supplier
PLUG,CMTG,TOP,9 5/8,HWE,8.16 MIN/9.06 MA	1	EA		
R/A DENSOMETER W/CHART RECORDER,/JOB,ZI	1	JOB		
PORT. DAS W/CEMWIN;ACQUIRE W/HES, ZI	1	JOB		
ADC (AUTO DENSITY CTRL) SYS, /JOB,ZI	1	JOB		

Tools and Accessories													
Type	Size	Qty	Make	Depth	Type	Size	Qty	Make	Depth	Type	Size	Qty	Make
Guide Shoe					Packer					Top Plug	9.625		
Float Shoe					Bridge Plug					Bottom Plug			
Float Collar					Retainer					SSR plug set			
Insert Float										Plug Container			
Stage Tool										Centralizers			
Miscellaneous Materials													
Gelling Agt			Conc		Surfactant			Conc		Acid Type		Qty	Conc %
Treatment Fld			Conc		Inhibitor			Conc		Sand Type		Size	Qty
Fluid Data													
Stage/Plug #: 1													
Fluid #	Stage Type	Fluid Name			Qty	Qty uom	Mixing Density lbm/gal	Yield ft3/sk	Mix Fluid Gal/sk	Rate bbl/min	Total Mix Fluid Gal/sk		
1	Water Spacer				20.00	bbl	8.33	.0	.0	.0			
2	Super Flush - XLC	SUPERFLUSH-XLC - SBM (549694)			20.00	bbl	.	.0	.0	.0			
3	Water Spacer				10.00	bbl	.	.0	.0	.0			
4	Lead Cement	VERSACEM (TM) SYSTEM (452010)			997.0	sacks	12.3	2.32	11.8		11.8		
	11.8 Gal	FRESH WATER											
5	Tail Cement	VERSACEM (TM) SYSTEM (452010)			184.0	sacks	12.6	2.16	10.58		10.58		
	10.58 Gal	FRESH WATER											
6	Displacement				246.00	bbl	8.33	.0	.0	.0			
7	Top Out Cement	HALCEM (TM) SYSTEM (452986)			350.0	sacks	15.8	1.15	5.0		5.0		
	5 Gal	FRESH WATER											
Calculated Values				Pressures				Volumes					
Displacement	246.6	Shut In: Instant			Lost Returns		Cement Slurry	552	Pad				
Top Of Cement	0	5 Min			Cement Returns	12	Actual Displacement	246.6	Treatment				
Frac Gradient		15 Min			Spacers	50	Load and Breakdown		Total Job				
Rates													
Circulating		Mixing		4	Displacement	8	Avg. Job						
Cement Left In Pipe	Amount	43ft	Reason	Shoe Joint									
Frac Ring # 1 @	ID		Frac ring # 2 @	ID		Frac Ring # 3 @	ID		Frac Ring # 4 @	ID			
The Information Stated Herein Is Correct					Customer Representative Signature								

The Road to Excellence Starts with Safety

Sold To #: 345242	Ship To #: 2808286	Quote #:	Sales Order #: 7931714
Customer: NOBLE ENERGY INC E-BUSINESS		Customer Rep: Collver, Charles	
Well Name: BM	Well #: 34-43C	API/UWI #: 05-045-19856	
Field: PARACHUTE	City (SAP): PARACHUTE	County/Parish: Garfield	State: Colorado
Legal Description:			
Lat: N 39.392 deg. OR N 39 deg. 23 min. 32.863 secs.		Long: W 107.972 deg. OR W -108 deg. 1 min. 40.462 secs.	
Contractor: H&P Drilling		Rig/Platform Name/Num: H&P 322	
Job Purpose: Cement Surface Casing			Ticket Amount:
Well Type: Development Well		Job Type: Cement Surface Casing	
Sales Person: METLI, MARSHALL		Srv Supervisor: FEUERBORN, JOHN	MBU ID Emp #: 381677

Activity Description	Date/Time	Cht #	Rate bbl/min	Volume bbl		Pressure psig		Comments
				Stage	Total	Tubing	Casing	
Depart Yard Safety Meeting	02/02/2011 15:45							
Crew Leave Yard	02/02/2011 16:00							
Arrive At Loc	02/02/2011 20:00							
Safety Meeting - Assessment of Location	02/02/2011 20:10							
Other	02/02/2011 21:00							SPOT EQUIPMENT
Pre-Rig Up Safety Meeting	02/02/2011 21:20							
Rig-Up Equipment	02/02/2011 21:30							
Other	02/02/2011 23:35							RIG CIRCULATING ON BOTTOM
Pre-Job Safety Meeting	02/02/2011 23:40							
Start Job	02/03/2011 02:00							OFF LINE CEMENT JOB TRANSPORT ON LOCATION 20:00 TO 03:00 5hrs
Test Lines	02/03/2011 02:01		0					2500psi ON TRUCK AND LINES
Pump Spacer 1	02/03/2011 02:04		5	20			200.0	H2O
Pump Spacer 1	02/03/2011 02:10		5	20			200.0	XLC SUPER FLUSH
Pump Spacer 1	02/03/2011 02:14		5	10			210.0	H2O
Pump Lead Cement	02/03/2011 02:17		4	410			205.0	997sks PUMPED AT 12.3ppg 2.32y 11.8wr
Pump Tail Cement	02/03/2011 05:06		4	70.8			30.0	184sks PUMPED AT 12.6ppg 2.16y 10.58wr
Drop Top Plug	02/03/2011 05:18							PLUG AWAY

Sold To # : 345242

Ship To # :2808286

Quote # :

Sales Order # :

7931714

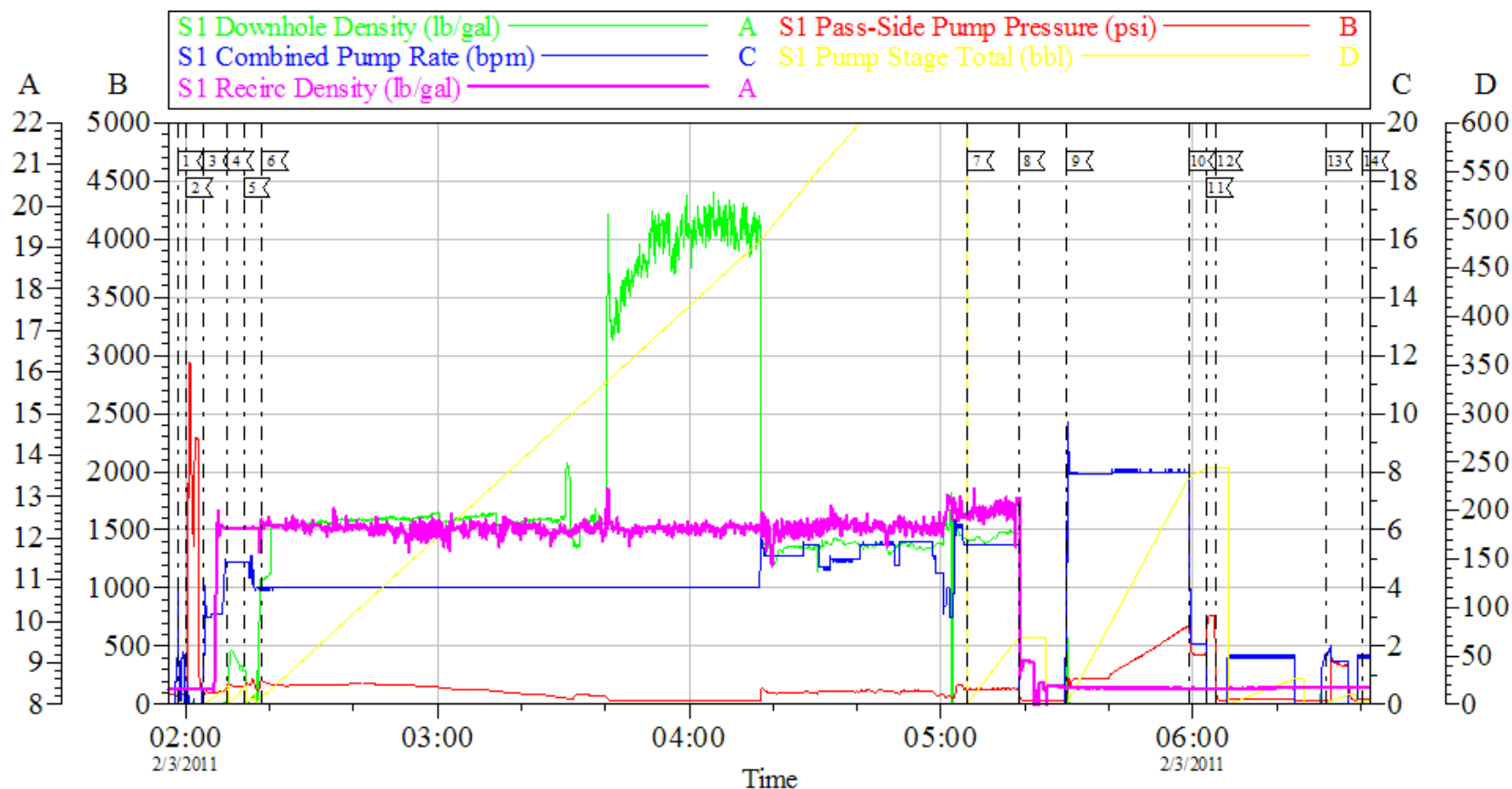
SUMMIT Version: 7.20.130

Saturday, February 05, 2011 03:52:00

Cementing Job Log

Activity Description	Date/Time	Cht #	Rate bbl/ min	Volume bbl		Pressure psig		Comments
				Stage	Total	Tubing	Casing	
Pump Displacement	02/03/2011 05:29		5				625.0	H2O
Other	02/03/2011 05:59		2	230			450.0	SLOW RATE
Bump Plug	02/03/2011 06:03			246.6			800.0	
Check Floats	02/03/2011 06:05							HOLDING
Other	02/03/2011 06:31		1.5	10				SUGAR H2O DOWN PARISITE
Pump Cement	02/03/2011 08:09		2	35.8			50.0	TOP OUT CEMENT WITH 2% CAL. CL. CEMENT PACKED OFF TOOK 45 MINUTES TO FIX CMENT PUMPED AT 15.8ppg 1.15y 5wr
Shutdown	02/03/2011 09:59							
Pump Cement	02/03/2011 12:30		1.5	35.8			50.0	PUMPED AT 15.8ppg 1.15y 5wr WITH 2% CAL CL.
Shutdown	02/03/2011 13:24							TOTAL USED TOP OUT 350sks RETURNING 0 SACKS TO YARD
Pre-Rig Down Safety Meeting	02/03/2011 13:30							
Depart Location Safety Meeting	02/03/2011 14:40							
Crew Leave Location	02/03/2011 15:00							

NOBLE SURFACE

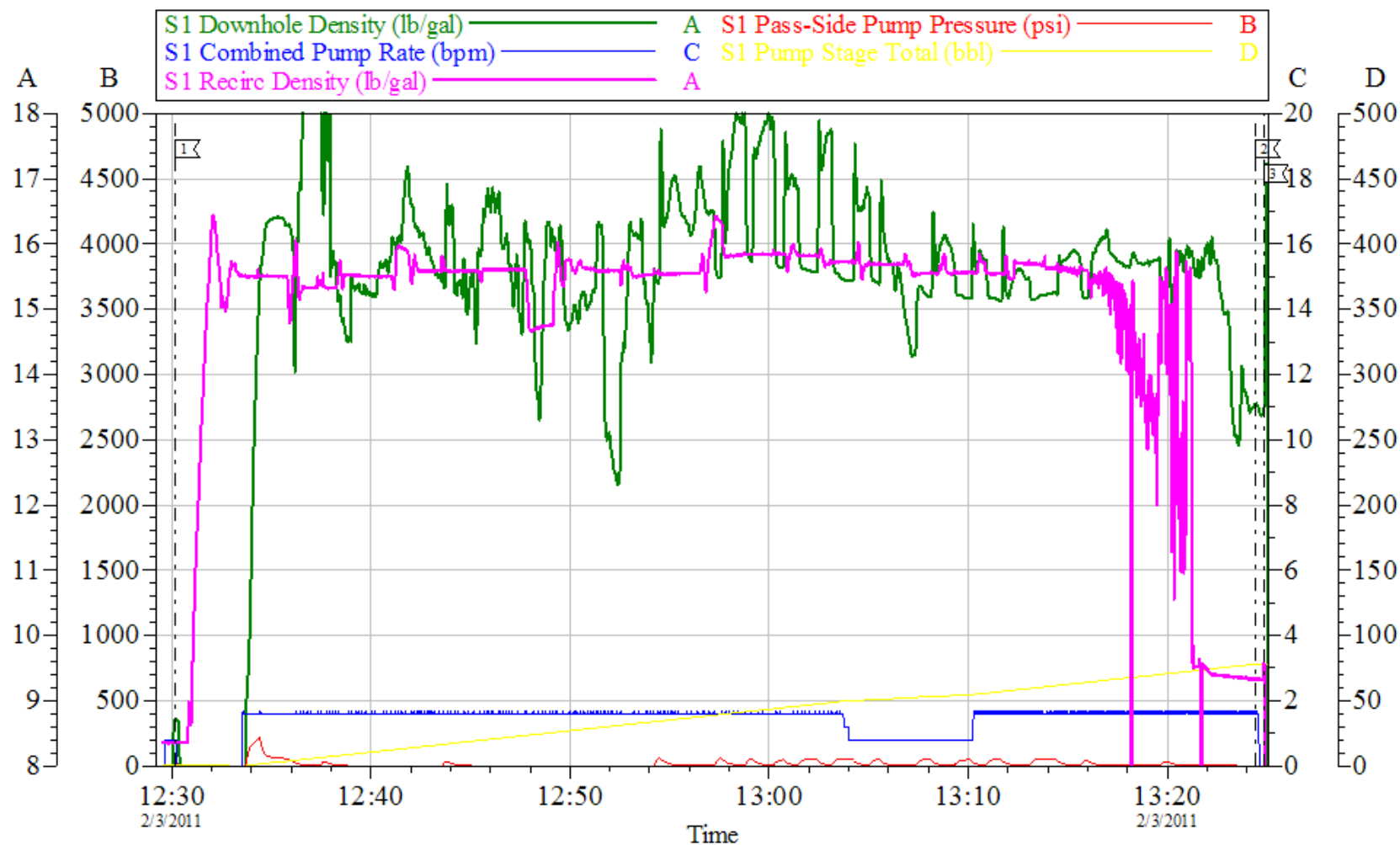


Local Event Log			
1	START JOB	01:58:05	2
2	TEST LINES	02:00:15	3
3	PUMP SPACER	02:04:13	4
4	PUMP XLC SUPER FLUSH	02:09:58	5
5	PUMP SPACER	02:13:53	6
6	PUMP LEAD CEMENT	02:18:12	7
7	PUMP TAIL CEMENT	05:06:16	8
8	DROP PLUG	05:18:30	9
9	PUMP DISPLACMENT	05:29:58	10
10	SLOW RATE	05:59:06	11
11	BUMP PLUG	06:03:23	12
12	CHECK FLOATS	06:05:33	13
13	PUMP PARASITE	06:31:46	14
14	END JOB	06:40:23	

Customer: NOBLE	Job Date: 02-Feb-2011	Sales Order #: 7931714
Well Description: BM34-43C	Job Type: SURFACE	ADC Used: YES
Company Rep: C COLLVER	Cement Supervisor: J FEUERBORN	Elite #: 7 S BORSZICH

OptiCem v6.4.0
03-Feb-11 06:55

NOBLE TOP OUT 2



Local Event Log			
[1] START TOP OUT	12:30:12	[2] SHUT DOWN	13:24:26
[3] END JOB	13:24:52		

Customer:	Job Date: 03-Feb-2011	Sales Order #: 7931714
Well Description:	Job Type:	ADC Used:
Company Rep:	Cement Supervisor:	Elite #:

OptiCem v6.4.0
03-Feb-11 13:42