

NOBLE ENERGY INC E-BUSINESS  
DO NOT MAIL  
HOUSTON, Texas

BM 34-43C

H&P Drilling/H&P/322

## **Post Job Summary**

### **Cement Surface Casing**

Prepared for: CHARLES COLLVER  
Date Prepared: 12/26/10  
Version: 1

Service Supervisor: JAMISON, PRICE

Submitted by:

**HALLIBURTON**

### The Road to Excellence Starts with Safety

The Road to Excellence Starts With Safety

Sold To #: 345242	Ship To #: 2808286	Quote #:	Sales Order #: 7786127
Customer: NOBLE ENERGY INC E-BUSINESS		Customer Rep: Collver, Charles	
Well Name: BM		Well #: 34-43C	API/UWI #: 05-045-19865
Field: PARACHUTE	City (SAP): PARACHUTE	County/Parish: Garfield	State: Colorado
Lat: N 39.392 deg. OR N 39 deg. 23 min. 32.863 secs.		Long: W 107.972 deg. OR W -108 deg. 1 min. 40.462 secs.	
Contractor: H&P Drilling		Rig/Platform Name/Num: H&P 322	
Job Purpose: Cement Surface Casing			
Well Type: Development Well		Job Type: Cement Surface Casing	
Sales Person: METLI, MARSHALL		Srvc Supervisor: JAMISON, PRICE	MBU ID Emp #: 229155

### Job Personnel

HES Emp Name	Exp Hrs	Emp #	HES Emp Name	Exp Hrs	Emp #	HES Emp Name	Exp Hrs	Emp #
BORSZICH, STEPHEN A	19	412388	JAMISON, PRICE W	19	229155	JENSEN, JESSE Robert	19	478774
JENSEN, SHANE Lynn	19	441759	YUTZY, BRIAN Matthew	19	478510			

### Equipment

HES Unit #	Distance-1 way	HES Unit #	Distance-1 way	HES Unit #	Distance-1 way	HES Unit #	Distance-1 way
10744648C	30 mile	10784064	30 mile	10804487	30 mile	10867423	30 mile
10897887	30 mile	10998508	30 mile	11006314	30 mile	11259881	30 mile

### Job Hours

Date	On Location Hours	Operating Hours	Date	On Location Hours	Operating Hours	Date	On Location Hours	Operating Hours
12/26/10	9.5	3	12/27/10	9.5				
<b>TOTAL</b>			<i>Total is the sum of each column separately</i>					

### Job

Formation Name					Date				Time	Time Zone	
Formation Depth (MD)		Top	Bottom		Called Out		26 - Dec - 2010		07:00	MST	
Form Type		BHST		On Location		26 - Dec - 2010		13:30	MST		
Job depth MD		3300. ft		Job Depth TVD		3332. ft		Job Started	26 - Dec - 2010	17:41	MST
Water Depth		Wk Ht Above Floor		. ft		Job Completed		27 - Dec - 2010	08:04	MST	
Perforation Depth (MD)		From	To		Departed Loc		26 - Dec - 2010		09:30	MST	

### Well Data

Description	New / Used	Max pressure psig	Size in	ID in	Weight lbm/ft	Thread	Grade	Top MD ft	Bottom MD ft	Top TVD ft	Bottom TVD ft
OPEN HOLE				14.75				.	3332.	.	3332.
SURFACE CASING	Unknown		9.625	8.921	36.		J-55	.	3300.	.	3300.

### Tools and Accessories

Type	Size	Qty	Make	Depth	Type	Size	Qty	Make	Depth	Type	Size	Qty	Make
Guide Shoe					Packer					Top Plug			
Float Shoe					Bridge Plug					Bottom Plug			
Float Collar					Retainer					SSR plug set			
Insert Float										Plug Container			
Stage Tool										Centralizers			

### Miscellaneous Materials

Gelling Agt	Conc	Surfactant	Conc	Acid Type	Qty	Conc	%
Treatment Fld	Conc	Inhibitor	Conc	Sand Type	Size	Qty	

Fluid Data									
Stage/Plug #: 1									
Fluid #	Stage Type	Fluid Name	Qty	Qty uom	Mixing Density lbm/gal	Yield ft <sup>3</sup> /sk	Mix Fluid Gal/sk	Rate bbl/min	Total Mix Fluid Gal/sk
1	Water Spacer		20.00	bbl	8.4	.0	.0	4.0	
2	SUPER FLUSH - XLC	SUPERFLUSH-XLC - SBM (549694)	20.00	bbl	10.	.0	.0	4.0	
3	Water Spacer		10.00	bbl	8.4	.0	.0	4.0	
4	LEAD CEMENT	VERSACEM (TM) SYSTEM (452010)	1170.0	sacks	12.3	2.3	11.68	4.0	11.68
		11.68 Gal	FRESH WATER						
5	Tail Cement	VERSACEM (TM) SYSTEM (452010)	200.0	sacks	12.6	2.14	10.47	4.0	10.47
		10.47 Gal	FRESH WATER						
6	Displacement		251.8	bbl	8.4	.0	.0	5.0	
7	Topout Cement	CMT - CLASS G, 94 LB (100064007)	70.0	sacks	15.8	1.15	5.0	.5	5.0
		94 lbm	CMT - CLASS G, 94 LB (100064007)						
		5 Gal	FRESH WATER						
Calculated Values		Pressures		Volumes					
Displacement	251.8	Shut In: Instant		Lost Returns	NO	Cement Slurry	570	Pad	
Top Of Cement	SURFACE	5 Min		Cement Returns	90	Actual Displacement	109	Treatment	
Frac Gradient		15 Min		Spacers	50	Load and Breakdown		Total Job	729
Rates									
Circulating	10	Mixing	4	Displacement	5	Avg. Job	4		
Cement Left In Pipe	Amount	43 ft	Reason	Shoe Joint					
Frac Ring # 1 @	ID	Frac ring # 2 @	ID	Frac Ring # 3 @	ID	Frac Ring # 4 @	ID		
The Information Stated Herein Is Correct				Customer Representative Signature					

*The Road to Excellence Starts with Safety*

Sold To #: 345242		Ship To #: 2808286		Quote #:		Sales Order #: 7786127	
Customer: NOBLE ENERGY INC E-BUSINESS				Customer Rep: Collver, Charles			
Well Name: BM			Well #: 34-43C			API/UWI #: 05-045-19865	
Field: PARACHUTE		City (SAP): PARACHUTE		County/Parish: Garfield		State: Colorado	
Legal Description:							
Lat: N 39.392 deg. OR N 39 deg. 23 min. 32.863 secs.				Long: W 107.972 deg. OR W -108 deg. 1 min. 40.462 secs.			
Contractor: H&P Drilling			Rig/Platform Name/Num: H&P 322				
Job Purpose: Cement Surface Casing						Ticket Amount:	
Well Type: Development Well			Job Type: Cement Surface Casing				
Sales Person: METLI, MARSHALL			Srv Supervisor: JAMISON, PRICE			MBU ID Emp #: 229155	

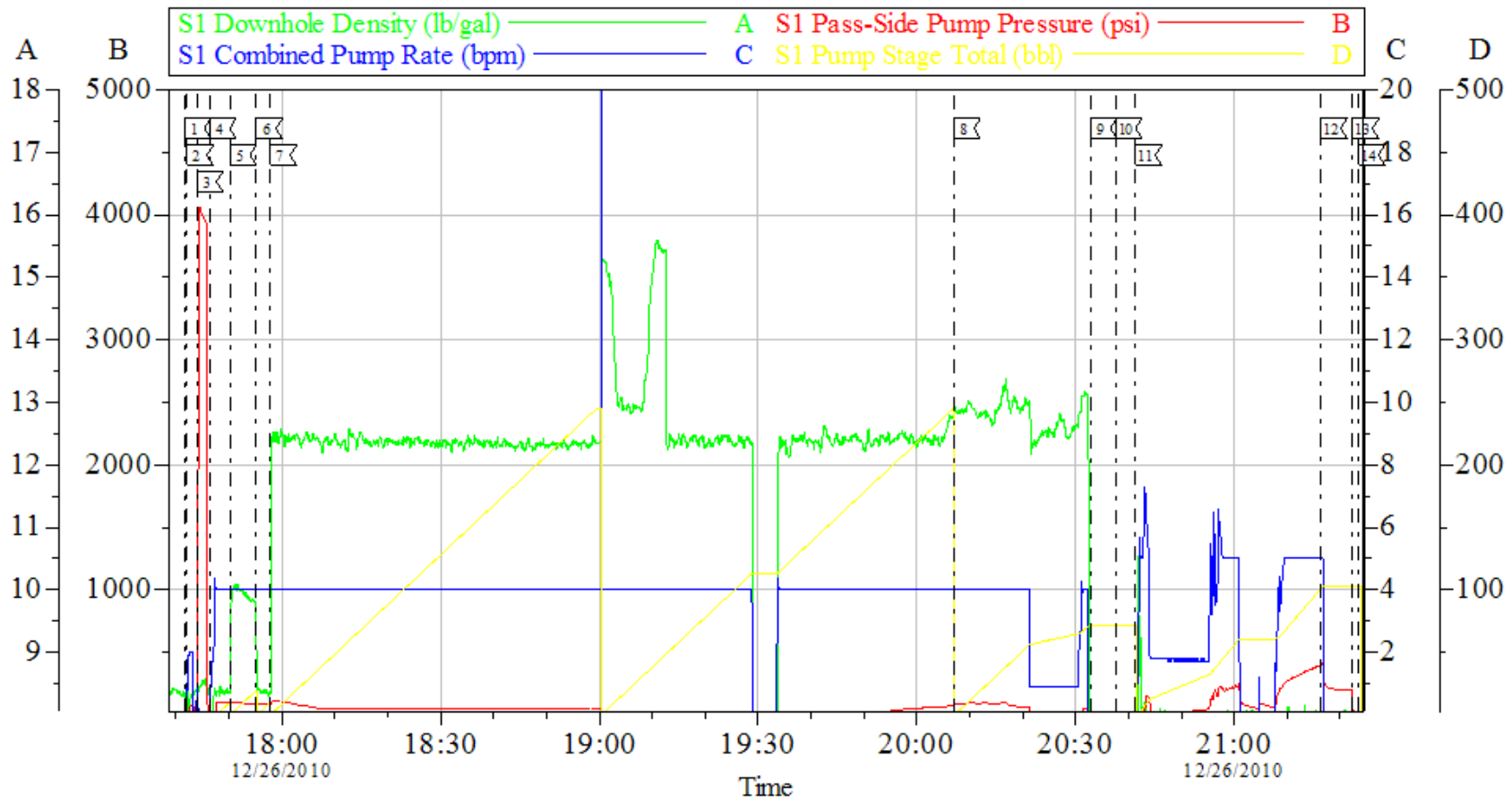
Activity Description	Date/Time	Cht #	Rate bbl/min	Volume bbl		Pressure psig		Comments
				Stage	Total	Tubing	Casing	
Call Out	12/26/2010 07:00							TD 3332 HOLE SIZE 14.75 TP 3330 CASING 9.625 36 J-55 SJ 43 MUD # 9.2 PPG
Depart Yard Safety Meeting	12/26/2010 09:50							HALLIBURTON TRANSPORT ON LOACTION @ 1430 OFF LOCATION @ 2130
Crew Leave Yard	12/26/2010 10:00							THIS JOB WAS DONE OFF LINE DID NOT USE CEMENT HEAD
Arrive At Loc	12/26/2010 13:20							
Assessment Of Location Safety Meeting	12/26/2010 13:45							
Pre-Rig Up Safety Meeting	12/26/2010 14:30							
Pre-Job Safety Meeting	12/26/2010 17:00							
Start Job	12/26/2010 17:41							
Prime Pumps	12/26/2010 17:42		2	2			63.0	FRESH WATER
Test Lines	12/26/2010 17:43						3000.0	
Pump Water	12/26/2010 17:46		4	20			104.0	FRESH WATER
Pump Spacer 2	12/26/2010 17:50		4	20			98.0	SUPER FLUSH
Pump Water	12/26/2010 17:55		4	10			93.0	FRESH WATER
Pump Lead Cement	12/26/2010 17:57		4	479.3			114.0	MIXED @ 12.3 PPG YIELD 2.3 WAT/REQ 11.68 1170 SKS

Activity Description	Date/Time	Cht #	Rate bbl/min	Volume bbl		Pressure psig		Comments
				Stage	Total	Tubing	Casing	
Pump Tail Cement	12/26/2010 20:07		4	76.2			98.0	MIXED @ 12.6 PPG YIELD 2.14 WAT/REQ 10.47 200 SKS
Shutdown	12/26/2010 20:32		1	10				
Drop Plug	12/26/2010 20:37							
Pump Displacement	12/26/2010 20:41		5					FRESH WATER
Shutdown	12/26/2010 21:16		2	102			380.0	DID NOT DISPLACE TO FLOAT COLLAR PIT COULD NOT HOLD ALL THE CEMENT RETURNS DISPLACEMENT WAS 251.8 THERE IS ABOUT 1837 FEET OF CEMENT LEFT IN CASING CO.REP SHUT HES DOWN.
Check Floats	12/26/2010 21:22							FLOATS HELD
End Job	12/26/2010 21:23							CEMENT BACK TO SURFACE 90 BBLS
Wait on HES Materials to Arrive - Start Time	12/26/2010 21:25							TOP OUT CEMENT
Wait on HES Materials to Arrive - End Time	12/27/2010 06:00							TOP OUT ON LOCATION
Pre-Rig Up Safety Meeting	12/27/2010 06:15							
Post-Job Safety Meeting (Pre Rig-Down)	12/27/2010 07:00							CASING WAS NOT MOVED THROUGHOUT JOB
Pre-Job Safety Meeting	12/27/2010 07:10							
Start Job	12/27/2010 07:35							
Pump Water	12/27/2010 07:36		0.5	0.5			5	FRESH WATER
Pump Cement	12/27/2010 07:37		2	14.3			5	MIXED @ 15.8 YIELD 1.15 WAT/REQ 5.0 70 SKS WITH 2% C.C.
Pump Displacement	12/27/2010 08:03		2	1			5	FRESH WATER
Shutdown	12/27/2010 08:04							

Activity Description	Date/Time	Cht #	Rate bbl/ min	Volume bbl		Pressure psig		Comments
				Stage	Total	Tubing	Casing	
End Job	12/27/2010 08:04							CEMENT BACK TO SURFACE ON TOP OUT 3 BBLS
Depart Location Safety Meeting	12/27/2010 08:45							GOOD CIRCULATION THROUGHOUT JOB
Crew Leave Location	12/27/2010 09:00							THANKS FOR USING HALLIBURTON BILL JAMISON & CREW

# NOBLE

## 9.625 SURFACE CASING

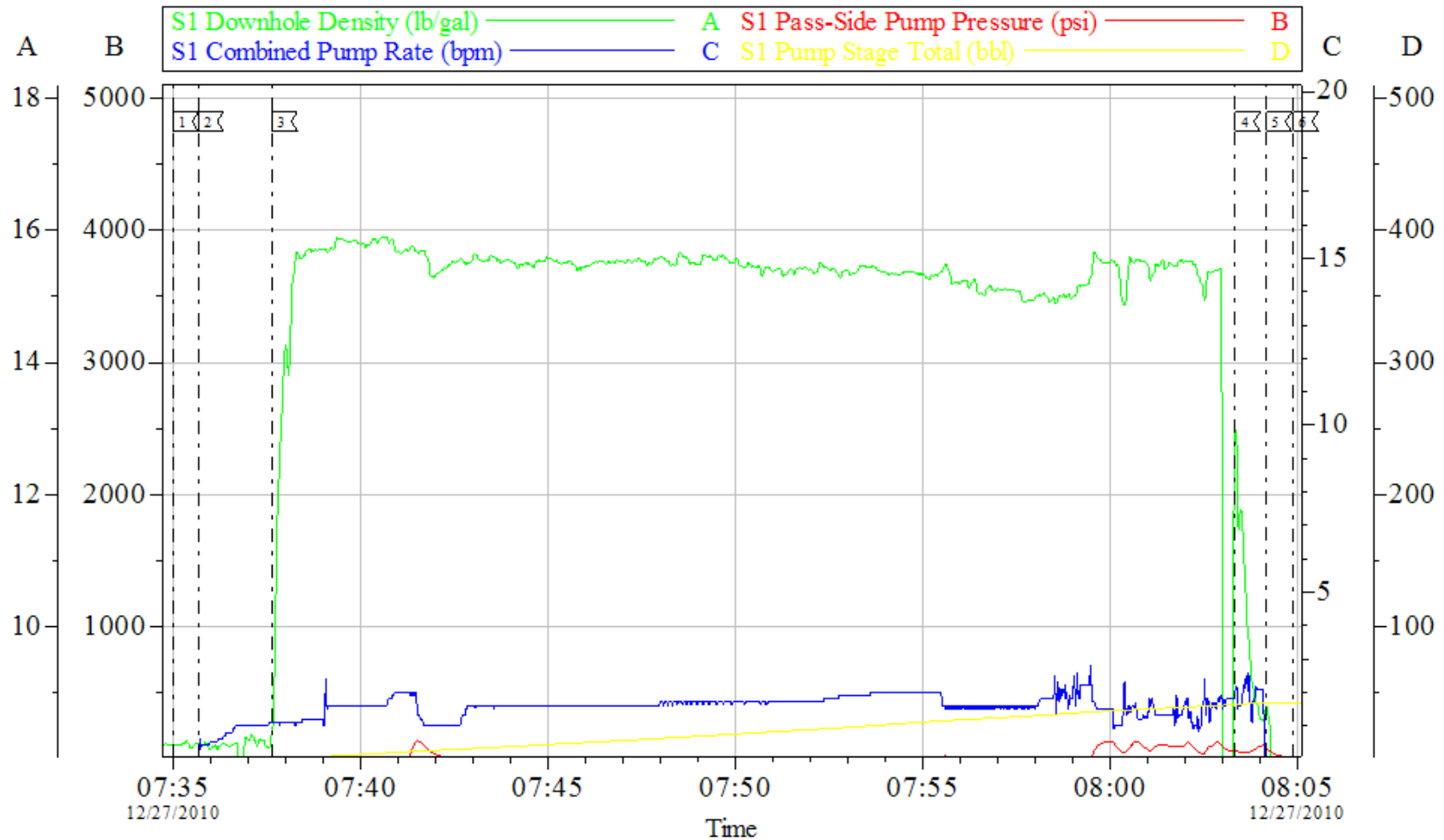


Local Event Log					
1	START JOB	17:41:38	2	PRIME LINES	17:42:05
3	TEST LINES	17:43:55	4	START FRESH WATER SPACER	17:46:27
5	START SUPERFLUSH	17:50:14	6	START FRESH WATER SPACER	17:55:10
7	START LEAD CEMENT	17:57:50	8	START TAIL CEMENT	20:07:05
9	SHUTDOWN	20:32:51	10	DROP PLUG	20:37:39
11	START DISPLACEMENT	20:41:20	12	SHUTDOWN	21:16:26
13	CHECK FLOATS	21:22:23	14	END JOB	21:23:33

Customer: NOBLE	Job Date: 26-Dec-2010	Sales Order #: 7786127
Well Description: BM 34-43C	Job Type: CEMENT	ADC Used: YES
Company Rep: CHARLES COLLVER	Cement Supervisor: BILL JAMISON	Elite #: 6 STEVE BORSEZICH

HALLIBURTON  
OptiCem v6.3.4  
26-Dec-10 21:39

# NOBLE TOP OUT



Local Event Log					
1	START JOB	07:35:00	2	START FRESH WATER SPACER	07:35:40
3	START CEMENT	07:37:38	4	START DISPLACEMENT	08:03:21
5	SHUTDOWN	08:04:11	6	END JOB	08:04:54

Customer: NOBLE	Job Date: 27-Dec-2010	Sales Order #: 7786127	HALLIBURTON OptiCem v6.3.4 27-Dec-10 08:19
Well Description: BM 34-43C	Job Type: CEMENT	ADC Used: YES	
Company Rep: CHARLES COLLVER	Cement Supervisor: BILL JAMISON	Elite #: 6 STEVE BORSZICH	