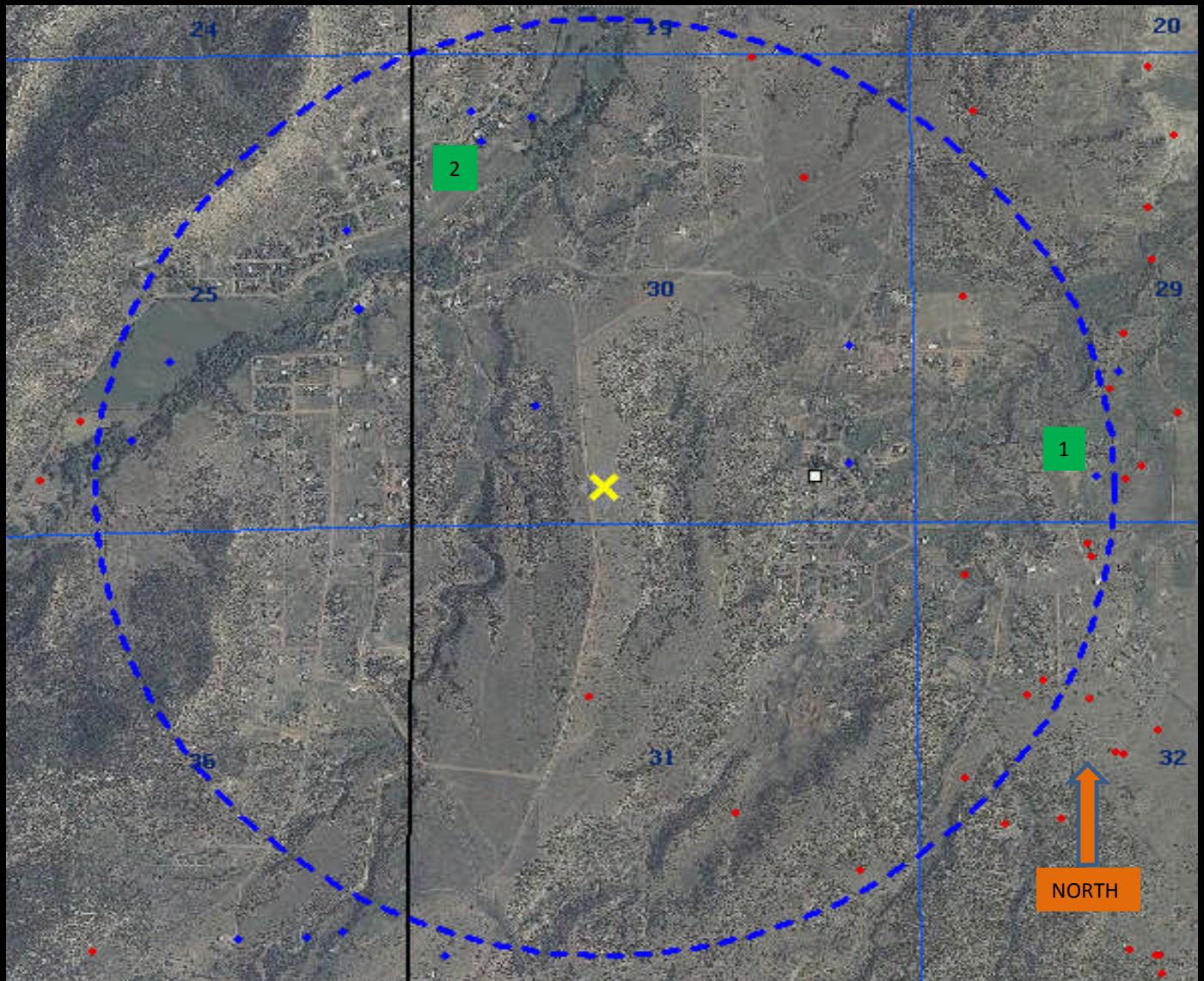


WATER WELL PROXIMITY MAP

OILFISH 24-30

SESW SECTION 30, TOWNSHIP 19 SOUTH, RANGE 69 WEST OF THE 6TH PRINCIPAL MERIDIAN



1. 5140' EAST

Permit = # 108113
Receipt = # 0108429
Depth = 505'
Status = Well Constructed
Elevation = 5320'

2. 4060' NW

Permit = #105360
Receipt = # 0102577
Depth = 255'
Status = Well Constructed
Elevation = 5360'

**All wells represented on this map are classified as active or constructed with a depth greater than zero. All values and locations are defined by the Colorado Division of Water Resources. Elevations estimated from COGCC Topos.

Data Sources:

Aerial courtesy of NAIP (2009)
Water wells courtesy of CDOWR



Legend

Proposed well
Water well
1 Mile Radius

