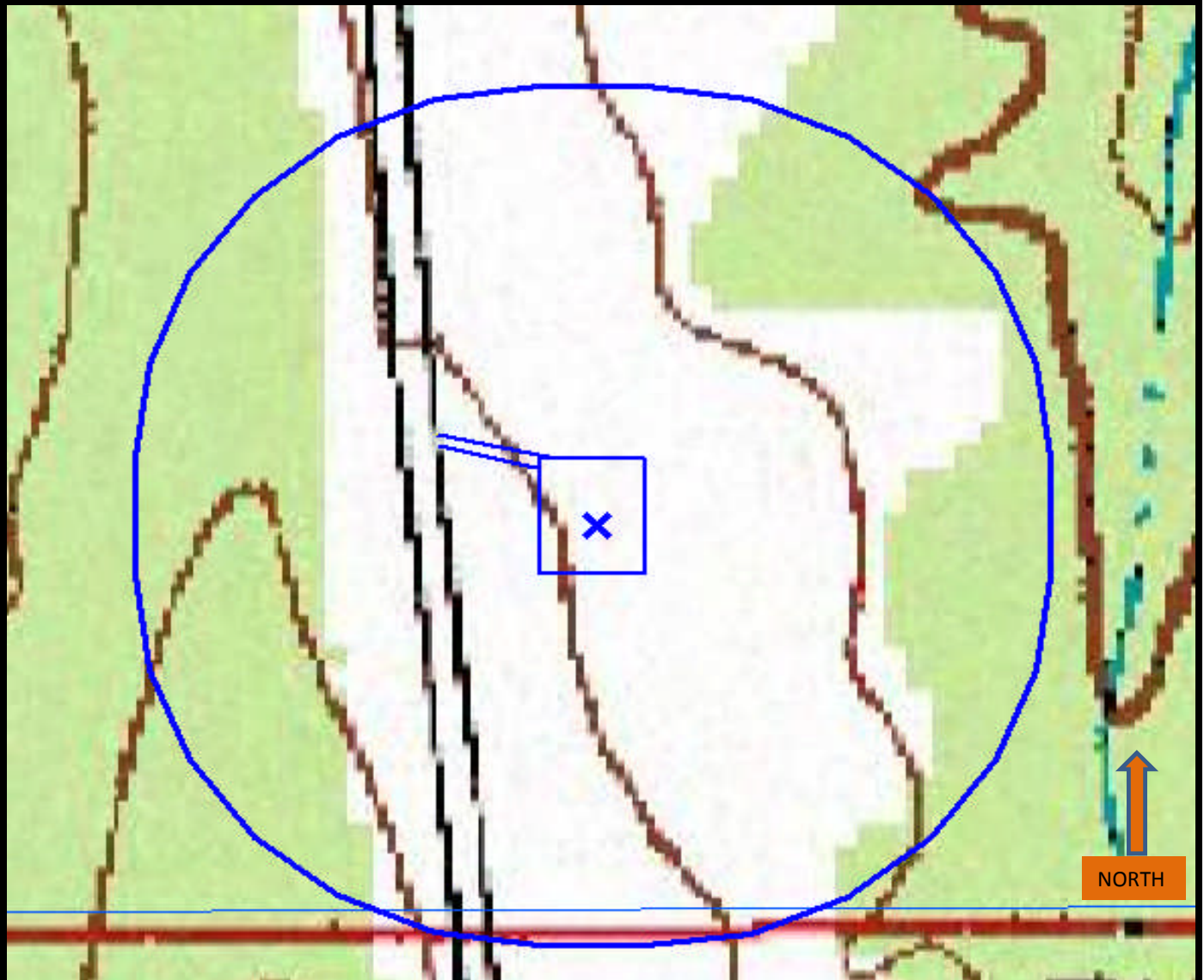





HYDROLOGY MAP

OILFISH 24-30

SESW SECTION 30, TOWNSHIP 19 SOUTH, RANGE 69 WEST OF THE 6TH PRINCIPAL MERIDIAN



1. Proposed Well: Oilfish 24-30		X	4. Nearest Surface Water 535' East/Southeast	
2. Proposed Access Road			5. Nearest Overhead Powerlines Aprx. 1020' East.	
3. Proposed Well Pad				
Data Sources: TOPO courtesy COGCC, USGS			Legend	Proposed well Disturbance Area 400' Radius
				X 